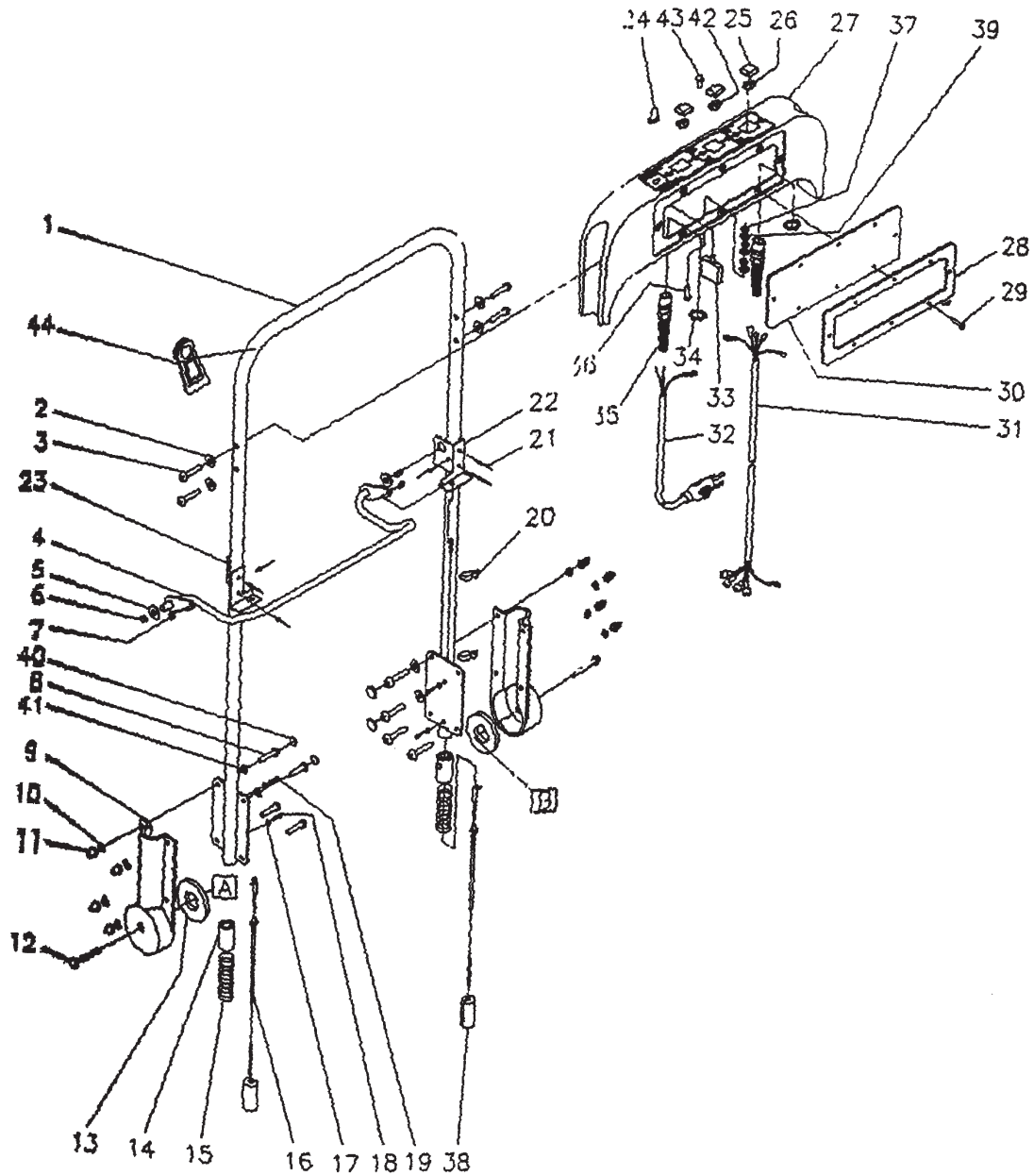


03-01	WXS 240/250 SPARE PARTS	<b>BOOK Cx</b>		
	SKIRT ASSEMBLY	Cx	4.6.1	3

Pos.	Part No.	Qty.	Desc.1	Desc.2	EAN
<hr/>					
1	1412768000	1	COVER-MACHINED,KX-15SC		
2	1418083000	2	SCR TPG F HEX HD 10-24X.75,SS		
1	1412866000	1	COVER-MACHINED,KX-19SC		
2	1418083000	2	SCR TPG F HEX HD 10-24X.75,SS		

**Note**

>> means: New or changed ref. no.

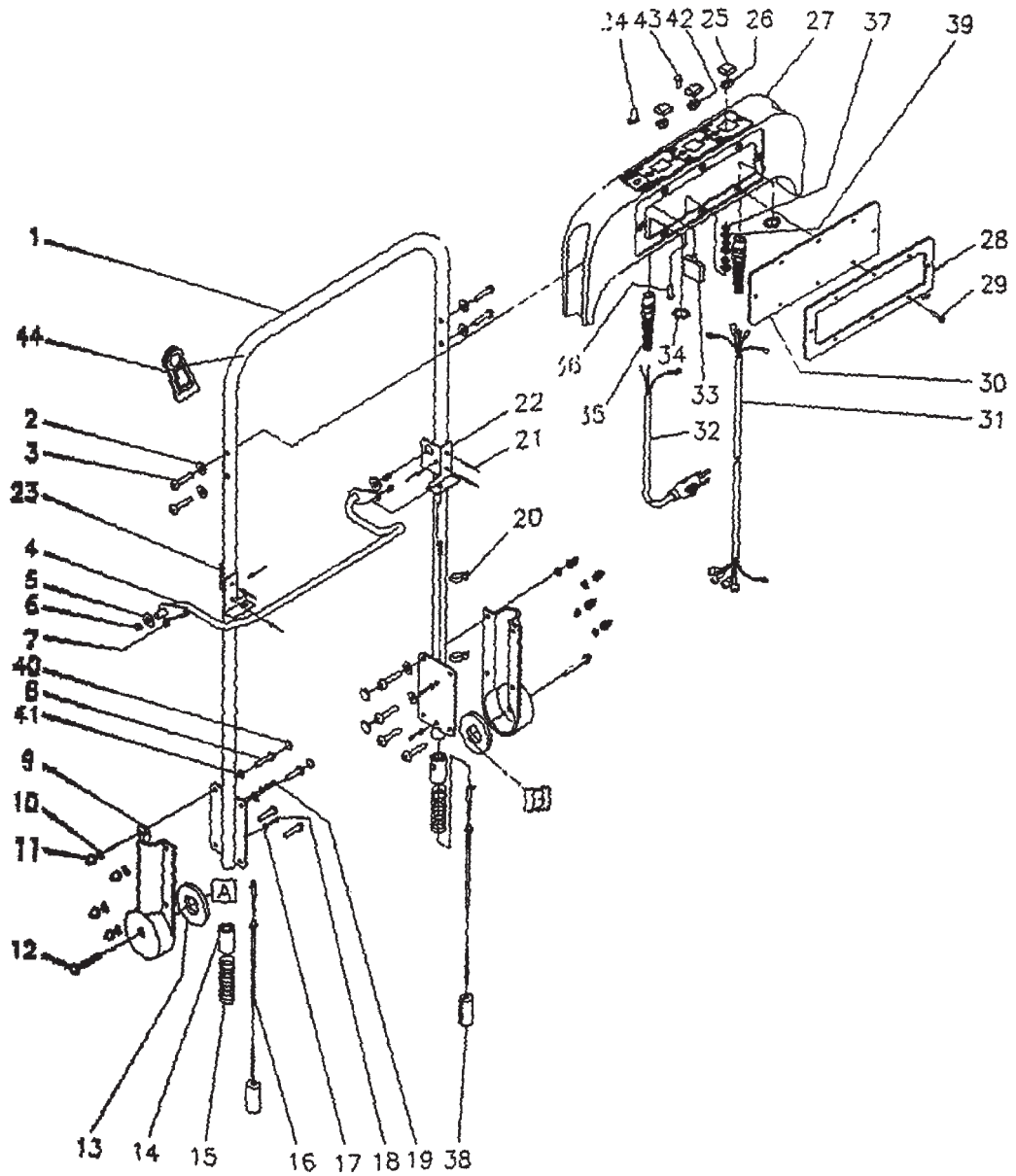


03-01	<b>WXS 240 SPARE PARTS</b>	<b>BOOK Cx</b>		
	<b>HANDLE ASSEMBLY PARTS</b>	<b>Cx</b>	<b>4.6.1</b>	<b>5</b>

Pos.	Part No.	Qty.	Desc.1	Desc.2	EAN
					<b>005715492</b>
1	1410586000	1	WDMT,HANDLE—KX-15SCA		
2	1418084000	8	WSHR LK .204ID.410OD.025T,EXTS		
3	1417907000	4	SCR MACH PAN HD 10-32X1.12L		
4	1410587000	1	WDMT,HANDLE LEVER & BRKT		
5	1412769000	2	WSHR NYLON—MACHINED,EXTR		
6	1412770000	2	PLUG,DOME—0.469DIA,NYLON,BLCK		
7	1417738000	2	NUT,HEX— 10-32,ZN PLT		
8	1418085000	8	SCR MACH PAN HD .250-20X.625L		
9	1412771000	2	SOCKET,HANDLE—MACH,BLACK		
10	1418086000	10	WSHR LK .267ID.510OD.028T,SS		
11	1417989000	8	NUT,ACORN—.250-20,NI PLT,HC		
12	1418087000	2	SCR CAP HEX HD .500-13X3.50L		
13	1412772000	1	PLATE,SPACER—ABS,BLK,.096		
14	1412773000	2	TUBE,STL—.875OD,.250W,1.500L		
15	1412774000	2	SPRING,COMP .645D 1.50L,.100WD		
16	1412775000	2	CABLE,SS—.06DIA X23.00L,W/BALL		
17	1418088000	2	WSHR LK.176ID.831OD.023TEXTSS		
18	1418089000	2	SCR MACH RD HD 8-32X.250L,SS		
19	1418090000	2	SCR MACH RD HD .250-20X.375,SS		
20	1412776000	1	CLIP,CORD—EXTR,PLATED		
21	1418091000	6	RIVET,POP—.187 DIA.125MAX,SS		
22	1412777000	1	PLATE,STL— 14GA,RH,BLACK		
23	1412778000	1	PLATE,STL—14GA,LH,BLACK		
24	1412779000	1	BOOT,RUBBER—PRO FOR CB 027151		
25	1412780000	3	BOOT,RUBBER—PRO FOR SW027142		
26	1416622000	2	SWITCH,RKR—DPST,16A,125/250V		
27	1412781000	1	PANEL,CONTROL—MACH,KX15SC		
28	1412782000	1	PLATE,STL—PANEL COVER,BLK		
29	1418092000	8	SCR MACH PAN HD 10-32X.5,BLK		
30	1410588000	1	ASM,GASKET & COVER—EXTR,PANEL		
31	1416623000	1	CORD—5X1.5MM2,EXTRACTORS		
32	1416624000	1	CORD—ASM,EUROPEAN		
33	1416625000	1	CIRCUIT BREAKER—5AMPS,VDE APP		
34	1417774000	2	NUT,SPECIAL—.500 PIPE,HEX LOC		
35	1416626000	2	BSHG,STRAIN RLF—.170-.470		
36	1418093000	1	SCR MACH RD HD 10-24X.750L		
37	1417543000	3	NUT,HEX— 10-24,ZN PLT		
38	1412783000	2	PIN PLUNGER—EXTR HANDLE		
39	1417528000	3	WSHR LK .204ID.410OD.025T EXT		
40	1412784000	4	CAP PLUGS,PLSTC—BLACK		
41	1412729000	4	WSHR FLT—1/4"SCR,RHIOCAPLUG		
42	1416627000	1	SWITCH,RKR—DPDT,13A,125V,OFF		
43	1416628000	1	LIGHT,INDICATOR—GREEN,240V		
43	1416629000	1	LIGHT,INDICATOR—GREEN,120		
44	1412785000	1	CLEAT,STRAIN RELIEF—EXTR'S		
45	1400324000	1	GROUND CHOKE		

**Note**

>> means: New or changed ref. no.

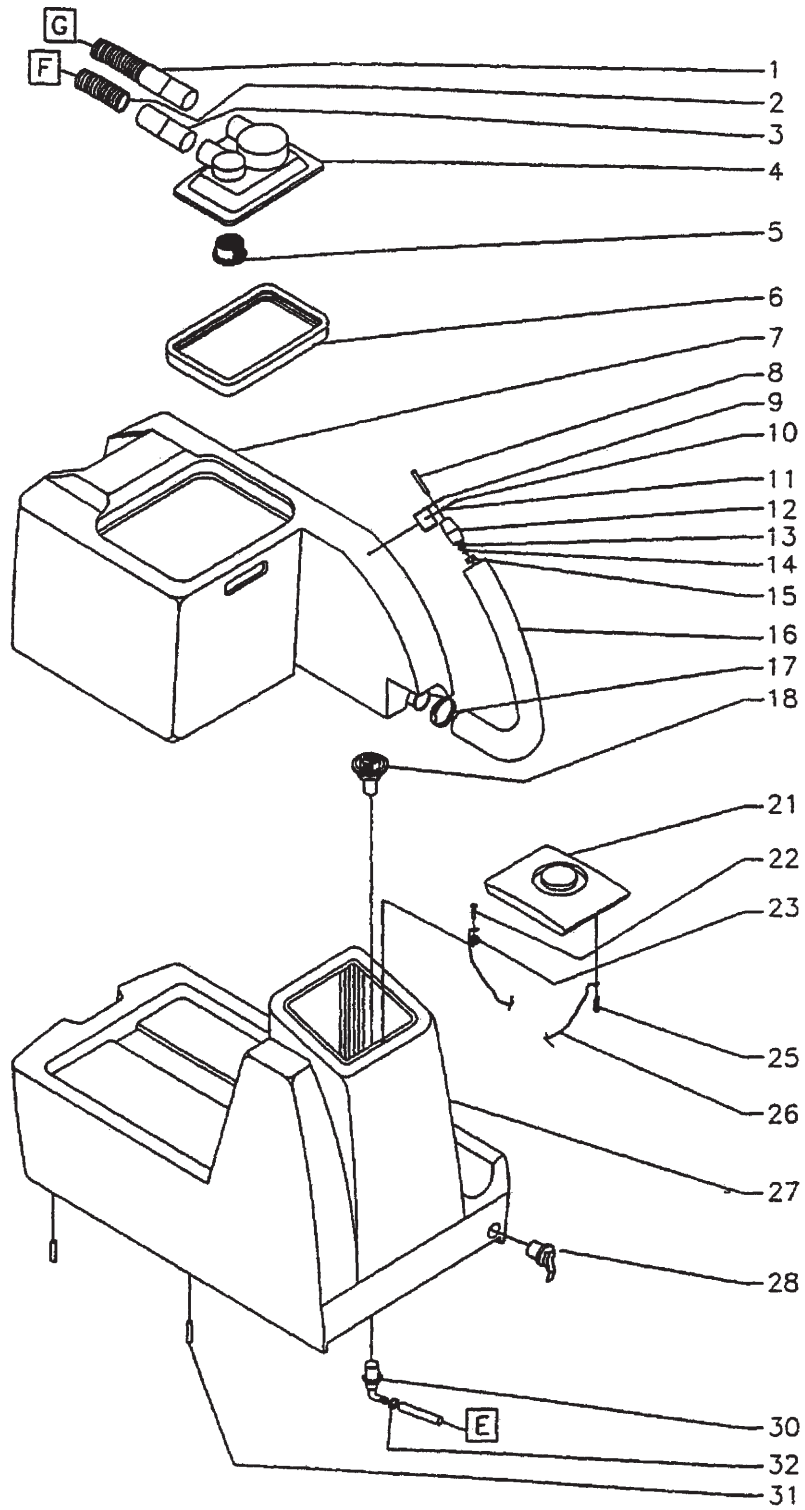


03-01	<b>WXS 250 SPARE PARTS</b>	<b>BOOK Cx</b>		
	<b>HANDLE ASSEMBLY PARTS</b>	<b>Cx</b>	<b>4.6.1</b>	<b>7</b>

Pos.	Part No.	Qty.	Desc.1	Desc.2	EAN
					<b>005715492</b>
1	1410609000	1	WDMT,HANDLE—1”DIA,KX-19SCA		
2	1418084000	8	WSHR LK .204ID.410OD.025T,EXTS		
3	1417907000	4	SCR MACH PAN HD 10-32X1.12L		
4	1410610000	1	WDMT,HANDLE & BRACKET		
5	1412769000	2	WSHR NYLON—MACHINED,EXTR		
6	1412770000	2	PLUG,DOME—0.469DIA,NYLON,BLCK		
7	1417738000	2	NUT,HEX— 10-32,ZN PLT		
8	1418085000	8	SCR MACH PAN HD .250-20X.625L		
9	1412771000	2	SOCKET,HANDLE—MACH,BLACK		
10	1418086000	10	WSHR LK .267ID.510OD.028T,SS		
11	1417989000	8	NUT,ACORN—.250-20,NI PLT,HC		
12	1418087000	2	SCR CAP HEX HD .500-13X3.50L		
13	1412772000	1	PLATE,SPACER—ABS,BLK,.096		
14	1412773000	2	TUBE,STL—.875OD,.250W,1.500L		
15	1412774000	2	SPRING,COMP .645D 1.50L,.100WD		
16	1412775000	2	CABLE,SS—.06DIA X23.00L,W/BALL		
17	1418088000	2	WSHR LK.176ID.831OD.023TEXTSS		
18	1418089000	2	SCR MACH RD HD 8-32X.250L,SS		
19	1418090000	2	SCR MACH RD HD .250-20X.375,SS		
20	1412776000	1	CLIP,CORD—EXTR,PLATED		
21	1418091000	6	RIVET,POP—.187 DIA.125MAX,SS		
22	1412777000	1	PLATE,STL—14GA,RH,BLACK		
23	1412778000	1	PLATE,STL—14GA,LH,BLACK		
24	1412779000	1	BOOT,RUBBER—PRO FOR CB		
25	1412780000	3	BOOT,RUBBER—PRO FOR SW		
26	1416622000	3	SWITCH,RKR—DPST,16A,125/250V		
27	1412788000	1	PANEL,CONTROL—MACH,KX-19SC		
28	1412782000	1	PLATE,STL—PANEL COVER,BLK		
29	1418092000	8	SCR MACH PAN HD 10-32X.5,BLK		
30	1410588000	1	ASM,GASKET & COVER—EXTR,PANEL		
31	1416623000	1	CORD—5X1.5MM2,EXTRACTORS		
32	1416624000	1	CORD—ASM,EUROPEAN		
33	1416625000	1	CIRCUIT BREAKER—5AMPS,VDE APP		
34	1417774000	2	NUT,SPECIAL—.500 PIPE,HEX LOC		
35	1416626000	2	BSHG,STRAIN RLF—.170-.470		
36	1418093000	1	SCR MACH RD HD 10-24X.750L		
37	1417543000	3	NUT,HEX— 10-24,ZN PLT		
38	1412783000	2	PIN PLUNGER—EXTR HANDLE		
39	1417528000	3	WSHR LK .204ID.410OD.025T EXT		
40	1412784000	4	CAP PLUGS,PLSTC—BLACK		
41	1412729000	4	WSHR FLT—1/4"SCR,RHIOCAPLUG		
42	1416627000	1	SWITCH,RKR—DPDT,13A,125V,OFF		
43	1416628000	1	LIGHT,INDICATOR—GREEN,240V		
43	1416629000	1	LIGHT,INDICATOR—GREEN,120		
44	1412785000	1	CLEAT,STRAIN RELIEF—EXTR'S		
45	1400324000	1	GROUND CHOKE		

**Note**

>> means: New or changed ref. no.



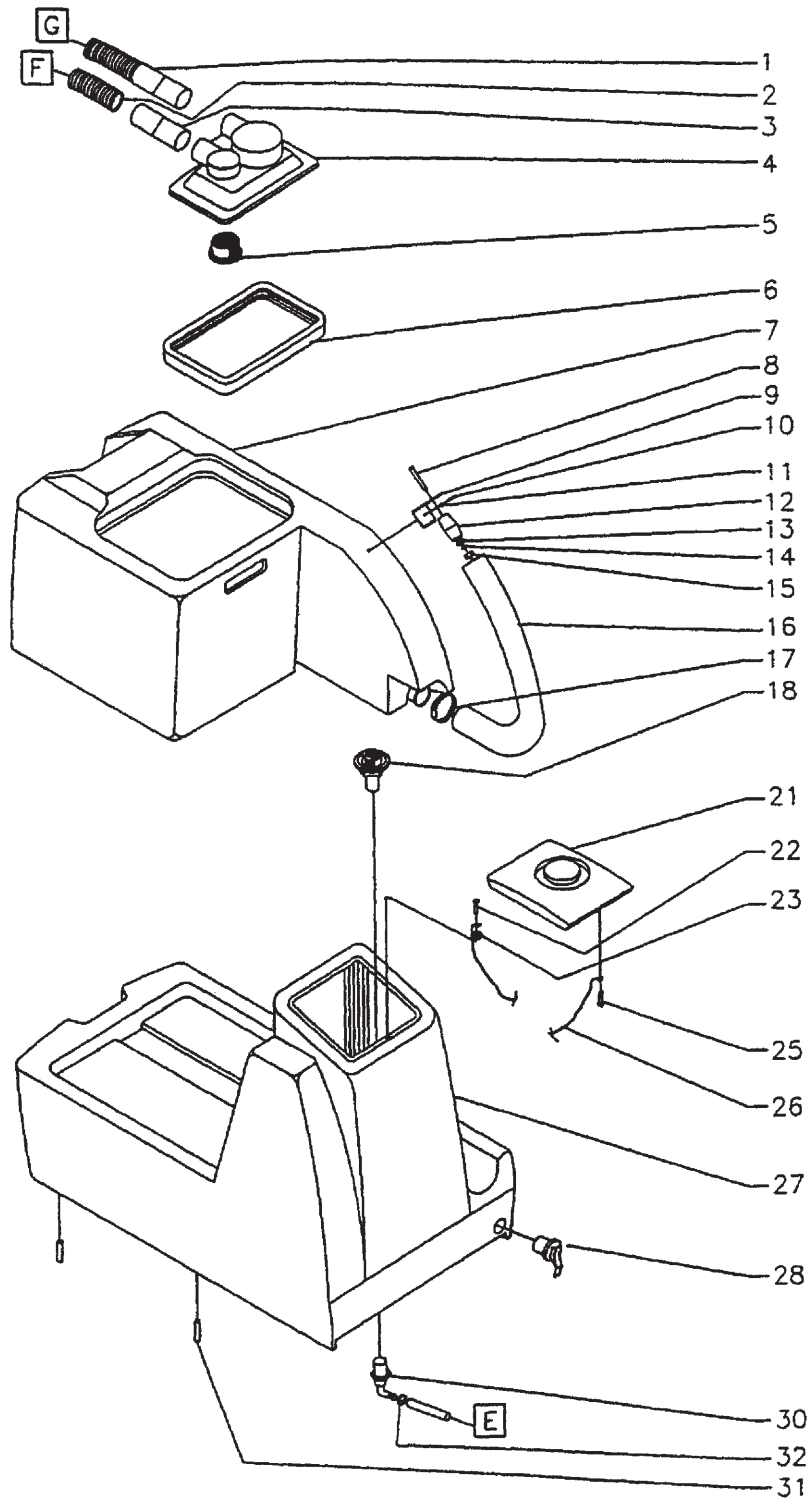


03-01	<b>WXS 240 SPARE PARTS</b>	<b>BOOK Cx</b>		
	<b>TANK ASSEMBLY PARTS</b>	<b>Cx</b>	<b>4.6.1</b>	<b>9</b>

Pos.	Part No.	Qty.	Desc.1	Desc.2	EAN
					<b>005715492</b>
1	1410589000	1	ASM,1-1/2"HOSE W/2 CUFFS X 13		
2	1410590000	1	ASM,HOSES W/CUFF & TUBING		
3	1412789000	1	CUFF,HOSE—1.5,BLACK		
4	1410591000	1	LID,TRANSPARENT—WARNING LABEL		
5	1412790000	1	FILTER,CAP—VAC INTAKE,EXTR		
6	1412791000	1	GASKET,FOAM—EXTR.RECOVERY		
7	1412792000	1	RECVY TANK—MACHINED,KX-15SC		
8	1418094000	1	SCR MACH PAN HD 10-24,2.50L,SS		
9	1412792000	1	OBS,NO REPLACEMENT		
10	1418095000	1	SCR CAP HEX HD .250-20X.500LSS		
11	1418086000	1	WSHR LK .267ID.510OD.028T,SS		
12	1412793000	2	STOPPER,RUBBER—7/8DIA,EXTR		
13	1418096000	1	WSHR FLT .281ID.625OD.080T,SS		
15	1418097000	1	NUT,HEX LOCK— 10-24,TPLK,SS		
16	1412794000	1	TUBE,RUBBER—1.250DX1.010DX13.5		
17	1412795000	1	CLAMP,HOSE—1.50 MAX DIA,WORM		
18	1412796000	1	STRAINER—100/30MESH,1/2 NPT		
21	1412797000	1	COVER,SOL TANK—MACHINED,EXTR		
22	1418098000	1	SCR MACH FLAT HD 10-24X.50L,SS		
23	1418055000	1	NUT,HEX— 10-24,SS		
25	1417980000	1	SCR TPG F PAN HD 10-B X.375L		
26	1412798000	1	WIRE ROPE—.062DIA X 12.00L		
27	1412799000	1	SOL TANK—MACH,KX-15SCA,KENT		
28	1412651000	1	PLUG,EXPANSION—.75DIA,SNAPTIE		
30	1412801000	1	ELBOW,PP-HS—1/2MPT X 3/8HS,NY		
31	1412802000	2	ROD,STEEL—.250-20 X 1.125L		
32	1412518000	1	CLAMP,HOSE—.625 MAX DIA,WORM		

**Note**

>> means: New or changed ref. no.

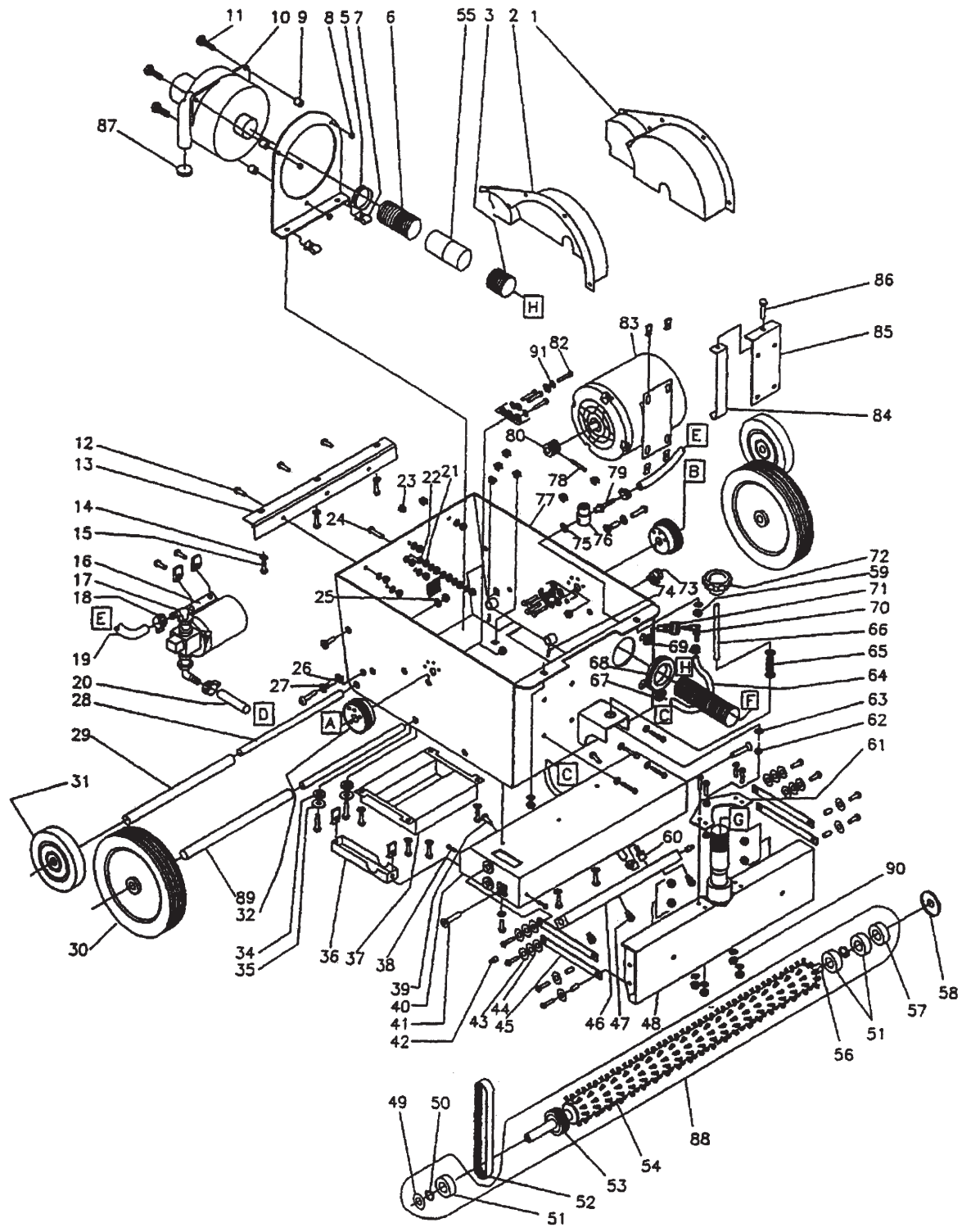


03-01	<b>WXS 250 SPARE PARTS</b>	<b>BOOK Cx</b>		
	<b>TANK ASSEMBLY PARTS</b>	<b>Cx</b>	<b>4.6.1</b>	<b>11</b>

Pos.	Part No.	Qty.	Desc.1	Desc.2	EAN
					<b>005715492</b>
1	1410589000	1	ASM,1-1/2"HOSE W/2 CUFFS X 13		
2	1410590000	1	ASM,HOSES W/CUFF & TUBING		
3	1412789000	1	CUFF,HOSE—1.5,BLACK		
4	1410591000	1	LID,TRANSPARENT—WARNING LABEL		
5	1412790000	1	FILTER,CAP—VAC INTAKE,EXTR		
6	1412791000	1	GASKET,FOAM—EXTR.RECOVERY		
7	1412850000	1	TANK,RECVY—MACHINED,KX-19SC		
8	1418094000	1	SCR MACH PAN HD 10-24,2.50L,SS		
9	1412851000	1	BRKT,ALUM—.125,FORMED,BLACK		
10	1418095000	1	SCR CAP HEX HD .250-20X.500LSS		
11	1418086000	1	WSHR LK .267ID.510OD.028T,SS		
12	1412793000	2	STOPPER,RUBBER—7/8DIA,EXTR		
13	1418096000	1	WSHR FLT .281ID.625OD.080T,SS		
14	1418084000	1	WSHR LK .204ID.410OD.025T,EXTS		
15	1418097000	1	NUT,HEX LOCK— 10-24,TPLK,SS		
16	1412794000	1	TUBE,RUBBER—1.250DX1.01DX13.5		
17	1412795000	1	CLAMP,HOSE—1.50 MAX DIA,WORM		
18	1412796000	1	STRAINER—100/30MESH,1/2 NPT		
21	1412797000	1	COVER,SOL TANK—MACHINED,EXTR		
22	1418098000	1	SCR MACH FLAT HD 10-24X.50L,SS		
23	141 8055 000	1	NUT,HEX— 10-24,SS		
25	1417980000	1	SCR TPG F PAN HD 10-B X.375L		
26	1412798000	1	WIRE ROPE—.062DIA X 12.00L		
27	1412852000	1	SOL TANK—MACH,KX-19SCA,KENT		
28	1412651000	1	PLUG,EXPANSION—.75DIA,SNAPTIE		
30	1412801000	1	ELBOW,PP-HS— 1/2MPT X 3/8HS,NY		
31	1412802000	2	ROD,STEEL—.250-20 X 1.125L		
32	1412518000	1	CLAMP,HOSE—.625 MAX DIA,WORM		

**Note**

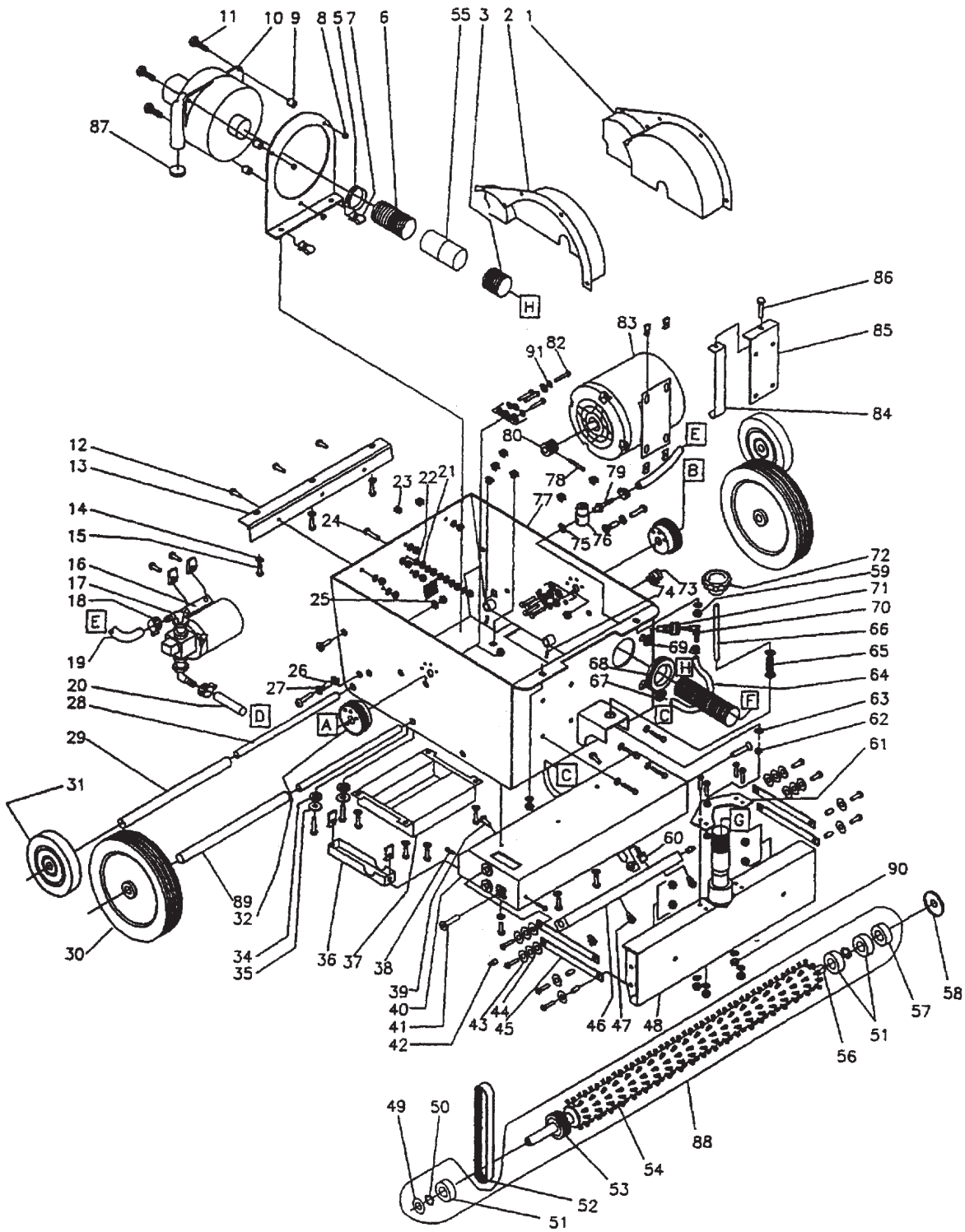
>> means: New or changed ref. no.



Pos.	PartNo.	Qty.	Desc.1	Desc.2	EAN					
					005715492	48	1412826000	1	CASTING,VAC CHAMBER—MACH,KX15	
						49	1412727000	1	SPACER,SEAL—2.25DIA BRUSH	
1	1412804000	1	COVER,WHEEL—RIGHT SIDE,EXTR			50	1412620000	2	RING,RTNG—EXT,.375 SHAFT,STL	
2	1412805000	1	COVER,WHEEL—LEFT HAND,EXTR			51	1416075000	3	BRG,BALL—.375ID, .875OD,.281W	
3	1412806000	1	HOSE,VAC—1.50DIA,BLK,14.00L			52	1412680000	1	BELT,V—6V'S, 19.00 PITCH LG	
5	1411203000	1	CLAMP,HOSE—1.75 MAX DIA,WORM			53	1412720000	1	PULLEY—BRUSH DRIVE,1.25OD,6GR	
6	1412808000	1	HOSE,VINYL—1.5ID,12.0L,BLK			54	1412831000	1	BRUSH,CYL—2.25ODX13.465L	
7	1417996000	8	NUT,SPEED,U—.250-20,.58X1.125			55	1412789000	1	CUFF,HOSE—1.5,BLACK	
8	1417685000	3	NUT,HEX LOCK—.250-20,NYLOC,ZN			56	1412833000	1	AXLE,BRUSH—.374ODX13.92L.KX15	
9	1411021000	3	SPACER,PHEN—.250X.500, .500L			57	1412834000	1	SEAL,GREASE—.875 OD X.375 ID	
10	1416577000	1	MTR,VAC—240V,BYP,2STG,TD W/TB			58	1412707000	1	GUARD,THREAD—2.25 BRUSH	
11	1418035000	1	SCR CAP HEX HD .250-20X1.50L			59	1417741000	12	NUT,HEX—.250-20,SS	
12	1418104000	7	SCR MACH RD HD .250-20X.75L,SS			60	1412836000	1	ADAPTER—1/8NPTX.375 HOSE,BRS	
13	1412810000	1	HINGE,BUTT—.125 X 12.50 LONG			61	1410595000	1	WDMT,LIFTING PLATE—11GA,SS	
14	1418086000	18	WSHR LK .267ID.510OD.028T,SS			62	1418117000	2	NUT,HEX LOCK—.375-16,18-8,SS	
15	1418105000	3	SCR MACH RD HD .250-20X.50L,SS			63	1418118000	3	WSHR FLT .406ID1.000D.071T,SS	
16	1410592000	1	ASM,WTR PUMP—60PSI,240V,TERM			64	1412837000	1	TUBE,VINYL—.375X.625,18.00L.R	
17	1418056000	2	ELBOW,PP-HS—3/8 MPTX3/8HS,NYL			65	1412838000	1	SPRING,COMP .432D 1.50L.054WD	
18	1412518000	5	CLAMP,HOSE— .625 MAX DIA,WORM			66	1412839000	1	STUD,CONT THD—.375-16X5.000L	
19	1412812000	1	TUBE,VINYL—.375X.625,9.00L,R			67	1412703000	1	GROM—1.0ID,1.25MHD,.125PA	
20	1412709000	1	TUBE,VINYL—.375X.625,20.00L,R			68	1412578000	1	GROM—1.93ID,2.43MHD,.125PA	
21	1418055000	15	NUT,HEX— 10-24,SS			69	1418080000	1	WSHR LK .675ID.777OD.031T,INT	
22	1418084000	5	WSHR LK .204ID.410OD.025T,EXTS			70	1410575000	1	ASM,COUPLER & ADAPTER—EXTR	
23	1418108000	9	NUT,SELF-RETAINING—.250-20			71	11412579000	1	COUPLING,QUICK DISCONNECT—BRS	
24	1418109000	1	SCR MACH RD HD 10-24X1.50L,SS			72	1412843000	1	KNOB—PRES ADJ,MACH,EXTR	
25	1418110000	10	WSHR FLT .203ID.562OD.045T,SS			73	1412748000	1	BSHG,STRAIN RLF—HEYCO 1497	
26	1412814000	6	BSHG,SLV—.277ID.375OD.263L,ST			74	1417690000	2	PIN,LOCK—.125 DIA WIRE	
27	1417760000	4	WSHR FLT .281ID.625OD.062T STL			75	1417921000	1	WSHR FLT .594ID1.12OD.063T STL	
28	1412815000	2	AXLE,WHEEL—.500DX12.79,KX15SC			77	1410597000	1	FRAME,PAINTED—15"XTR,BLACK	
29	1412816000	1	PIPE,PLSTC—1/2"NOM X 9.50			78	1417941000	1	PIN,ROLL—.125 DIA, .750L	
30	1412588000	2	WHEEL—GRAY,5-RIB,8.00 O.D.			79	1412618000	1	ADAPTER—1/4 NPT, .375 HOSE	
31	1411565000	2	WHEEL—5.00DIA,.504BORE,1.12HB			80	1412846000	1	PULLEY,GROOVED—6GRV,ALUM,.875	
32	1412819000	2	GEAR,HOT—MACHINED,EXTRACTORS			82	1418123000	8	SCR CAP SOC HD—.25-20X.750L	
34	1412820000	2	GROM—.313ID,.750MHD,.125GROVE			83	1416128000	1	MTR,AC—220/240,50,.33HP,1425	
35	1418022000	2	WSHR FLT .281 ID.875OD.036T ZN			84	1410598000	1	WDMT,PLATE W/NUT—KX15SC,KX19S	
36	1412821000	1	BRACKET—20GA SPLASH GUARD			85	1410599000	1	WDMT,TAKEUP—FRANKLIN MTR,BLK	
37	1410593000	1	ASM,EXHAUST MUFFLER—KX-15SCA			86	1417714000	1	SCR CAP HEX HD .312-18X1.25L	
39	1417980000	2	SCR TPG F PAN HD 10-B X.375L			87	1412847000	1	GASKET,DISCHARGE—VAC MTR,KX15	
40	1410594000	1	WDMT,EXTR HEAD—KX-15SCA			88	1410600000	1	ASM,BRUSH—2.25OD CYL,13.465L	
41	1418098000	12	SCR MACH FLAT HD 10-24X.50L,SS			89	1412848000	1	PIPE,PLSTC—1/2"NOM X 8.125	
42	1412822000	2	FITTING,PLUG—BRASS,1/8-27			90	1418125000	8	NUT,HEX LOCK—.250-20NYLOC,SS	
43	1417560000	8	WSHR FLT .406ID1.00OD.071T STL			91	1417504000	8	WSHR LK .262ID.489OD.062TSPLT	
44	1417535000	8	WSHR SPR TNSN .375ID.750OD.014			92	1412849000	1	VALVE,CHECK—2LBS.	
45	1412823000	4	BAR,STL—.625X.187X6.625,BLK			93	1416630000	1	SUPPRESSOR—SIEMENS,B84113CB60	
46	1412824000	1	TUBE,SOLUTION—MACHINED,KX15SC			94	1416631000	1	CAPACITOR—0.22MFD-2200PFD(XY)	
47	1412825000	3	NOZZLE,SPRAY—110DEG,TIP REMOV							

**Note**

&gt;&gt; means: New or changed ref. no.

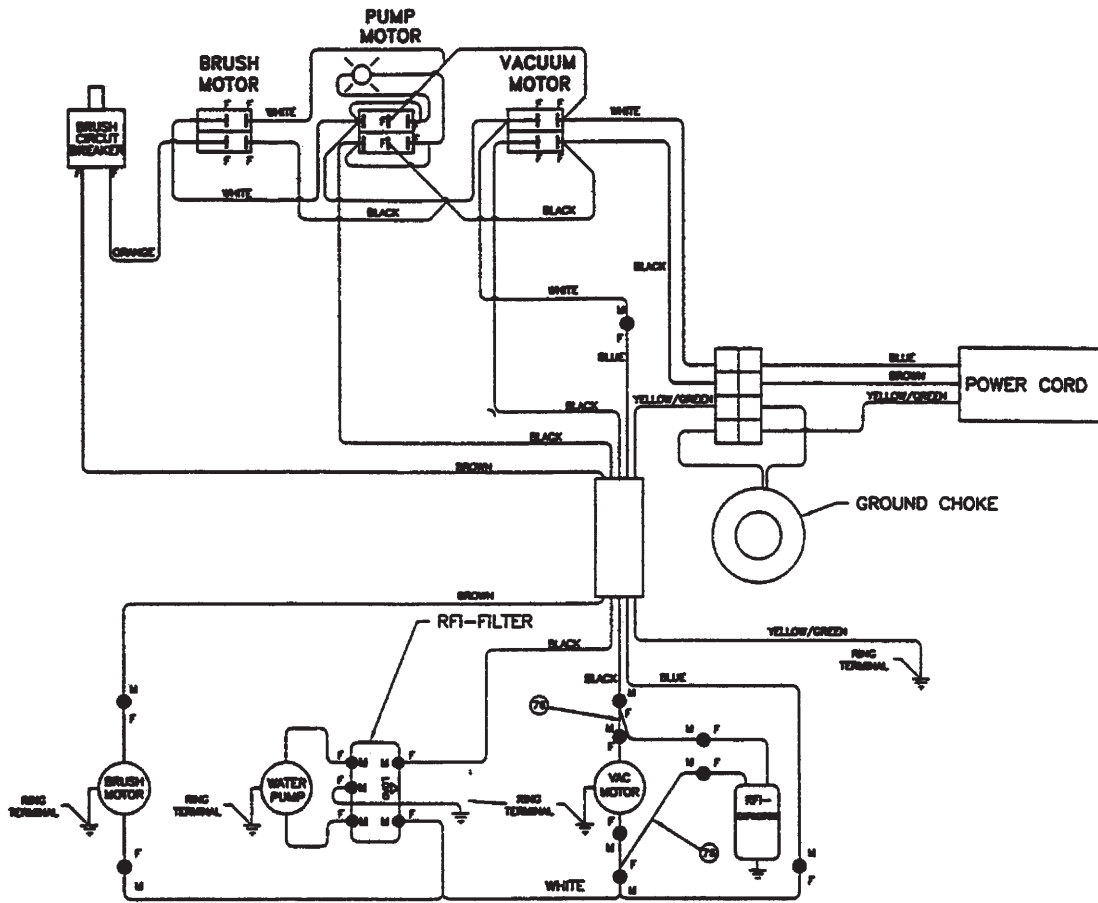




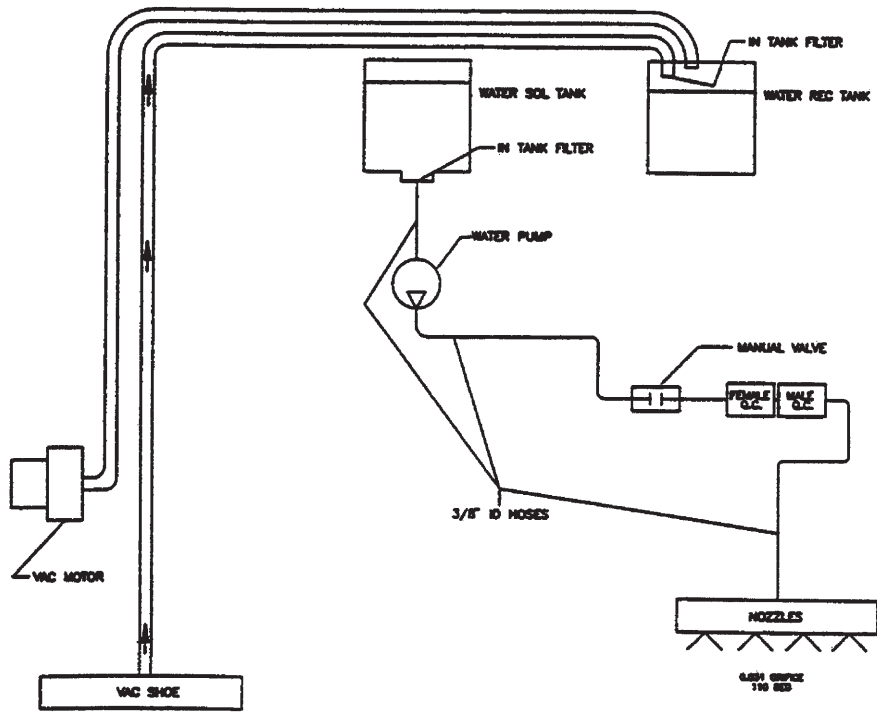
Pos.	PartNo.	Qty.	Desc.1	Desc.2	EAN				
					005715492	50	1412861000	1	TUBE,SOLUTION—MACHINED,KX19SC
						51	1412825000	4	NOZZLE,SPRAY—110DEG,TIP REMOV
1	1412804000	1	COVER,WHEEL—RIGHT SIDE,EXTR			52	1412862000	1	CASTING,VAC CHAMBER—MACH,KX19
2	1412805000	1	COVER,WHEEL—LEFT HAND,EXTR			53	1412727000	1	SPACER,SEAL—2.25DIA BRUSH
3	1416129000	1	MTR,VAC—240V/3STG BP,TD			54	1412620000	2	RING,RTNG—EXT. 375 SHAFT,STL
4	1411021000	3	SPACER,PHEN—250X 500, 500L			55	1416075000	3	BRG,BALL—375ID, 875OD, 281W
5	141 2853 000	1	BRKT,ALUM—11GA,VAC MTR,KX19SC			56	1412680000	1	BELT,V—6V'S, 19 00 PITCH LG
6	1417685000	3	NUT,HEX LOCK—250-20,NYLOC,ZN			57	1412720000	1	PULLEY—BRUSH DRIVE,1 25OD,6GR
7	1417996000	8	NUT,SPEED,U-250-20,,58X1 125			58	1412863000	1	BRUSH,CYL—2 25OD X 17 465L
8	1411203000	1	CLAMP,HOSE—1 75 MAX DIA,WORM			59	1412707000	1	GUARD,THREAD—2 25 BRUSH
9	1412854000	1	HOSE—GRAY.VINYL.2.0IDX12.0"L			60	1417741000	12	NUT,HEX—250-20,SS
10	1412066000	2	CLAMP,HOSE—2 25 MAX DIA,WORM			61	1412836000	1	ADAPTER—1/8NPTX 375 HOSE BRS
11	1418104000	8	SCR MACH RD HD 250-20X 75L,SS			63	1410595000	1	WDMT,LIFTING PLATE—11GA,SS
12	1412856000	1	HINGE,BUTT—1 25 X 15 50 LONG			64	1418117000	2	NUT,HEX LOCK—375-16, 18-8,SS
13	1418127000	6	SCR MACH RD HD 250-20X1 00 SS			65	1418118000	3	WSHR FLT 406ID1 00OD 071T SS
14	1412857000	1	SPRING,COMP—022X 30X6 00L			66	1412837000	1	TUBE,VINYL—375X 625 18 00L,R
15	1412858000	1	TUBE,VINYL— 375X 625,12.00L,R			67	1412838000	1	SPRING,COMP 432D 1 50L 054WD
16	1418086000	19	WSHR LK 267ID 510OD 028T,SS			68	1412839000	1	STUD,CONT THD—375-16X5 000L
17	1418105000	3	SCR MACH RD HD 250-20X 50L,SS			69	1412703000	1	GROM—1 0ID,1 25MHD 125PA
18	1410601000	1	ASM,WTR PUMP—100PSI 240V.TERM			70	1412578000	1	GROM—1 93ID,2 43MHD, 125PA
19	1410602000	1	ASM,COOLING MUFFLER—KX-19SC			71	1418080000	1	WSHR LK 675ID 777OD 031T,INT
20	1418022000	2	WSHR FLT 281 ID 875OD 036T ZN			72	1410575000	1	ASM,COUPLER & ADAPTER—EXTR
21	1412820000	2	GROM—313ID,,750MHD,,125GROVE			73	1412579000	1	COUPLING,QUICK DISCONNECT—BRS
22	1418108000	9	NUT,SELF-RETAINING—250-20			74	1412843000	1	KNOB—PRES ADJ,MACH,EXTR
23	1418084000	5	WSHR LK 204ID 410OD.025T,EXTS			75	1412748000	1	BSHG,STRAIN RLF—HEYCO 1497
24	1418055000	15	NUT,HEX— 10-24,SS			76	1417690000	2	PIN,LOCK—125 DIA WIRE
25	1418109000	1	SCR MACH RD HD 10-24X1 50L,SS			77	1417921000	1	WSHR FLT 594ID1 12OD 063T STL
26	1418128000	3	RIVET,POP—125 X 250 MAX GRIP			79	1410605000	1	FRAME.PAINTED—19"XTR,BLACK
27	1418056000	2	ELBOW,PP-HS—3/8 MPTX3/8HS,NYL			80	1417941000	1	PIN,ROLL—125 DIA, 750L
28	1412518000	5	CLAMP,HOSE— 625 MAX DIA,WORM			81	1412618000	1	ADAPTER—1/4 NPT, 375 HOSE
29	1412709000	1	TUBE,VINYL—375X.625,20.00L,R			82	1412846000	1	PULLEY,GROOVED—6GRV,ALUM, 875
30	1412780000	2	BOOT,RUBBER—PRO FOR SW027142			84	1418130000	8	SCR CAP SOC HD 250-20X1 50L
31	1412860000	1	PIPE,PLSTC—1/2"NOM X 12.50L			85	1416129000	1	MTR,VAC—240V/3STG BP,TD
32	1412588000	2	WHEEL—GRAY,5-RIB,8.00 O.D			86	1418123000	7	SCR CAP SOC HD—25-20X 750L
33	1411565000	2	WHEEL—5.00DIA.504BORE,1 12HB			87	1410606000	1	WDMT,PLT W/NUT-KX15SCA KX19SCA
34	1412814000	6	BSHG,SLV—277ID 375OD.263L,ST			88	1410599000	1	WDMT,TAKEUP—FRANKLIN MTR,BLK
35	1417760000	4	WSHR FLT 281ID 625OD.062T STL			89	1417714000	1	SCR CAP HEX HD 312-18X1 25L
36	141 2819 000	2	GEAR,HOT—MACHINED,EXTRACTORS			90	1417860000	3	WSHR FLT 127ID 375OD 030T STL
38	1417922000	8	NUT,SPEED,U— 10-24, 44X.63			91	1412834000	1	SEAL,GREASE—875 OD X 375 ID
39	1412821000	1	BRACKET—20GA SPLASH GUARD			92	1412864000	1	AXLE,BRUSH—374ODX17 92L,KX19
40	1410603000	1	ASM,EXHAUST MUFFLER—KX-19SCA			93	1410607000	1	ASM,BRUSH—2.25OD CYL,17 465L
42	1417980000	2	SCR TPG F PAN HD 10-B X.375L			94	1412865000	1	PIPE,PLSTC—1/2"NOM X 11 125L
43	1410604000	1	WDMT,EXTRACTOR HEAD—KX-19SCA			95	1418125000	8	NUT,HEX LOCK—250-20NYLOC,SS
44	1418098000	12	SCR MACH FLAT HD 10-24X 50L,SS			96	1417504000	8	WSHR LK .262ID 489OD 062TSPLT
45	1412822000	2	FITTING,PLUG—BRASS,1/8-27			97	1410608000	1	ASM,PLATE—AIR COOLING,KX-19SC
46	1417560000	8	WSHR FLT 406ID1 00OD 071T STL			98	1412849000	1	VALVE,CHECK—2LBS
47	1417535000	8	WSHR SPR TNSN 375ID 750OD 014			99	1416630000	1	SUPPRESSOR—SIEMENS,B84113CB60
48	1412823000	4	BAR,STL—625X 187X6.625,BLK			100	1416631000	1	CAPACITOR—0 22MFD-2200PFD(XY)
49	1418110000	10	WSHR FLT 203ID 562OD 045T,SS						

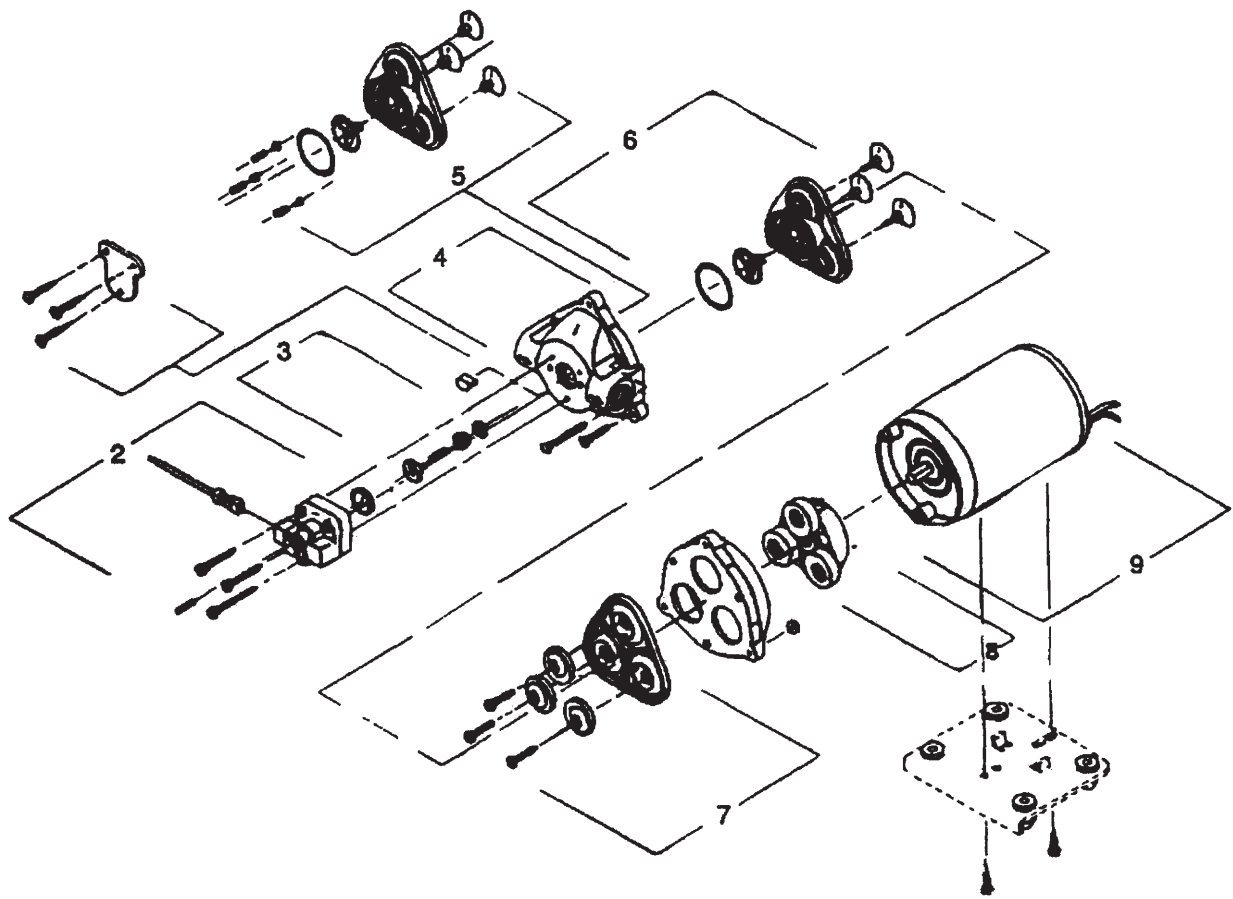
**Note**

&gt;&gt; means: New or changed ref. no.









03-01	WXS 240/250 SPARE PARTS	BOOK Cx		
	WATER PUMP DIAGRAM	Cx	4.6.1	19

Part Number*	1	35220	35218
Shurflo Part No.		8090-512-246	8090-801-278
Psi		60	100
Voltage		230	230
Pressure Switch	2	39502	39503
Check Valves	3	39348	39348
Housing	4	39358	39359
Valves	5,6	39571	39572
Diaphragm	7	39343	39343
Drive Asm.	8	39361	39361
Motors W/rectifiers	9	39363	39363

\*- NO. 1 is the complete pump assembly.

\*\*- Replacement rectifiers are only for motors with an external rectifier.  
The later designed motors have an internal rectifier, these rectifiers are not replaceable.

**Note**

>> means: New or changed ref. no.

PROBLEM	CAUSE	SOLUTION
1. Belt squeaks.	<ol style="list-style-type: none"> <li>1. New machine.</li> <li>2. Brush drive belt may be loose.</li> </ol>	<ol style="list-style-type: none"> <li>1. Tip machine slightly back to start for the first minute or two of use.</li> <li>2. See "BELT ADJUSTMENT" in the "ADJUSTMENTS" section of this manual.</li> </ol>
2. Solution leaks through nozzles while the machine is off.	<ol style="list-style-type: none"> <li>1. Check valve may be clogged.</li> </ol>	<ol style="list-style-type: none"> <li>1. The check valve needs to be cleaned or replaced.</li> </ol>
3. No solution through nozzles when the pump switch is depressed.	<ol style="list-style-type: none"> <li>1. Hose, filter, check valve, or nozzles may be clogged.</li> <li>2. Water pump may not be operating.</li> <li>3. Water pump may have failed.</li> <li>4. Solution tank may be empty.</li> </ol>	<ol style="list-style-type: none"> <li>1. Clean hose, filter, check valve, or nozzles.</li> <li>2. Check switch and wiring for failures.</li> <li>3. Replace pump.</li> <li>4. Fill tank with solution.</li> </ol>
4. Uneven solution spray pattern.	<ol style="list-style-type: none"> <li>1. Nozzle, nozzle tip, or filter may have lime or soap build up.</li> </ol>	<ol style="list-style-type: none"> <li>1. Remove the nozzles and clean them with vinegar. Do not use an object that may scratch or punch through the nozzle opening. Enlarging the opening may waste water.</li> </ol>
5. Machine isn't removing old rug stains.	<ol style="list-style-type: none"> <li>1. Nozzle tips may be worn.</li> <li>2. Stain may need to be pretreated with cleaning chemicals.</li> </ol>	<ol style="list-style-type: none"> <li>1. Replace nozzle tips making sure alignment allows spray to form a straight line.</li> <li>2. Carefully pretreat all stains using recommended chemicals and methods before extracting.</li> </ol>
6. Machine doesn't extract enough water from solution soaked carpet.	<ol style="list-style-type: none"> <li>1. Vacuum motor may have failed.</li> <li>2. Gasket may be leaking.</li> <li>3. Vacuum hose may have loose connection or the suction nozzle may be obstructed.</li> <li>4. Vacuum tube may be obstructed.</li> <li>5. Drain hose may be open or torn.</li> <li>6. Vacuum hose may be damaged.</li> </ol>	<ol style="list-style-type: none"> <li>1. Repair or replace vacuum motor.</li> <li>2. Locate torn or missing gasket and replace.</li> <li>3. Connect loose hose or remove obstruction.</li> <li>4. Clear vacuum tube screen of obstruction.</li> <li>5. Close or replace drain hose.</li> <li>6. Repair or replace hose.</li> </ol>
7. Solution or foam is entering vacuum port.	<ol style="list-style-type: none"> <li>1. Recovery tank may be overflowing into the vacuum tube.</li> </ol>	<ol style="list-style-type: none"> <li>1. Use non-foaming chemicals and do not let the recovery tank capacity surpass the recommended level. For more information see "SOLUTION" section in this manual.</li> </ol>
8. Leaking drain valve.	<ol style="list-style-type: none"> <li>1. Hose may be worn or loose.</li> </ol>	<ol style="list-style-type: none"> <li>1. Replace stoppers or hose.</li> </ol>
9. Nothing works, no power.	<ol style="list-style-type: none"> <li>1. Fuse blown or circuit breaker tripped in building.</li> <li>2. Faulty power cord.</li> </ol>	<ol style="list-style-type: none"> <li>1. Reset circuit breaker.</li> <li>2. Contact the dealer from which the carpet extractor was purchased or an authorized service station for repair.</li> </ol>
10. Brush motor runs but brush doesn't	<ol style="list-style-type: none"> <li>1. Brush drive belt may be loose.</li> <li>2. Brush drive belt may be broken.</li> <li>3. The roll pin located inside the motor pulley may be broken.</li> <li>4. Brush roll is defective.</li> </ol>	<ol style="list-style-type: none"> <li>1. See "BELT ADJUSTMENT" in the spin. "ADJUSTMENTS" section of this manual.</li> <li>2. Replace belt.</li> <li>3. Replace roll pin.</li> <li>4. Replace brush.</li> </ol>

**WARNING!**

**TO AVOID SERIOUS INJURY, DISCONNECT THE POWER CORD FROM THE ELECTRICAL OUTLET. ANY ELECTRICAL SERVICING MUST BE PERFORMED BY THE DEALER FROM WHICH THE CARPET EXTRACTOR WAS PURCHASED OR AN AUTHORIZED SERVICE STATION.**

PROBLEM	CAUSE	SOLUTION
11. Brush motor doesn't run.	<ol style="list-style-type: none"> <li>1. The circuit breaker tripped because the brush is adjusted too low.</li> <li>2. The circuit breaker tripped because the brush cannot turn due to logged debris.</li> <li>3. The circuit breaker tripped because there is a short in the wiring.</li> <li>4. Loose wiring connection or broken wire.</li> <li>5. Faulty brush motor.</li> </ol>	<ol style="list-style-type: none"> <li>1. See "RUSH ADJUSTMENT"</li> <li>2. Unplug the power cord and remove clogged debris.</li> <li>3. Contact the dealer from which the carpet extractor was purchased or an authorized service station for repair.</li> <li>4. Contact the dealer from which the carpet extractor was purchased or an authorized service station for repair.</li> <li>5. Replace brush motor.</li> </ol>
12. The vacuum motor doesn't run.	<ol style="list-style-type: none"> <li>1. The vacuum switch is off.</li> <li>2. The vacuum switch is faulty.</li> <li>3. Loose wiring connection or broken wire.</li> <li>4. Faulty vacuum motor.</li> </ol>	<ol style="list-style-type: none"> <li>1. Turn on the vacuum switch.</li> <li>2. Contact the dealer from which the carpet extractor was purchased or an authorized service station for repair.</li> <li>3. Contact the dealer from which the carpet extractor was purchased or an authorized service station for repair.</li> <li>4. Contact the dealer from which the carpet extractor was purchased or an authorized service station for repair.</li> </ol>
13. Vacuum motor works but the vacuum suction is weak.	<ol style="list-style-type: none"> <li>1. The vacuum chamber is clogged.</li> <li>2. The vacuum hose is loose at either end.</li> <li>3. The vacuum hose has a loose cuff or is torn.</li> <li>4. The clear lid is not sealed properly in place.</li> <li>5. The gasket on the clear lid is damaged.</li> </ol>	<ol style="list-style-type: none"> <li>1. Remove clogged material.</li> <li>2. Push the ends of the vacuum hose firmly in place.</li> <li>3. Tighten cuff or replace nose.</li> <li>4. Position clear lid properly over tank opening.</li> <li>5. Replace the clear lid's gasket.</li> </ol>
14. No spray through spray nozzles.	<ol style="list-style-type: none"> <li>1. The pump switch is off.</li> <li>2. The solution filter is clogged and has</li> <li>3. The spray nozzles are plugged with vinegar. Do not use an object that may scratch or punch through the nozzle opening. Enlarging the opening may waste water and cause streaking.</li> <li>4. Loose or broken wiring.</li> <li>5. Faulty pump switch.</li> <li>6. Solenoid valve doesn't work.</li> </ol>	<ol style="list-style-type: none"> <li>1. Turn pump switch on.</li> <li>2. Clean solution filter from clogging shut off solution to the solution pump. debris.</li> <li>3. Remove the nozzles and clean them</li> <li>4. Contact the dealer from which the carpet extractor was purchased or an authorized service station for repair.</li> <li>5. Contact the dealer from which the carpet extractor was purchased or an authorized service station for repair.</li> <li>6. Clean or replace the solenoid valve.</li> </ol>

**WARNING!**

**TO AVOID SERIOUS INJURY, DISCONNECT THE POWER CORD FROM THE ELECTRICAL OUTLET. ANY ELECTRICAL SERVICING MUST BE PERFORMED BY THE DEALER FROM WHICH THE CARPET EXTRACTOR WAS PURCHASED OR AN AUTHORIZED SERVICE STATION.**