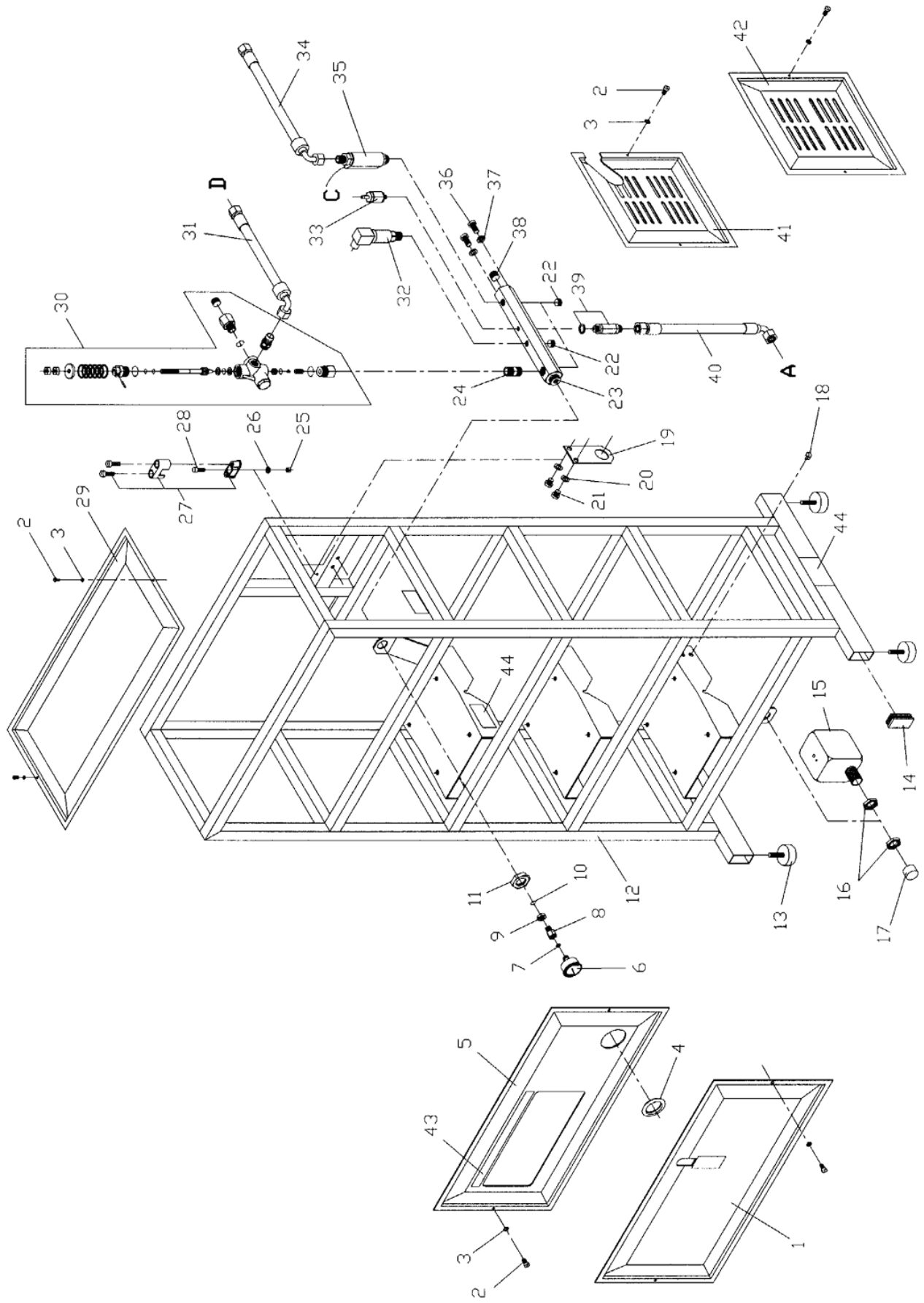

N/G-600-2/3

Reservedelsliste
Spare parts list
Ersatzteilliste
Liste de pièces détachées

Ramme / Frame / Rahmen / Cadre	2
Vandkasse / Water tank / Wasserkasten / Cuve deau	6
Pumpe 600-3 / Pump 600-3 / Pumpe 600-3 / Pomp 600-3	9
Motor 600-3 / Motor 600-3 Mach.No.< 450301000295 / Motor / Moteur 600-3 Mach.No.< 450301000295	12
Motor 600-2 Mach.No. > 440212010301 / Motor 600-2 Mach.No. > 440212010301 / Motor / Moteur 600-2 Mach.No. > 440212010301	16
EI-komponenter / Electric components / Elektrische komponente / Composantes électrique	19
Pistol 98 / Pistol 98 / Pistole 98 / Pistolet 98	23
Pistol / Pistol / Pistole / Pistolet	25
Pistol 2600 EGT / Pistol 2600 EGT / Pistole 2600 EGT / Pistolet 2600 EGT	27
Spulerør / Lances / Lanzen / Lance	29



Ramme / Frame / Rahmen / Cadre

System 600

Pos.	Ref. no.	Betegnels Description	Bezeichnung Description	
0	06160966	EL-STIK FOR TRYKTRANSMITTER ELECTRIC PLUG FOR PRESSURE TRANSMITTER	STECKER PRISE ELEC. POUR TRANSMETTEUR DE PRESSION	2
0	06261719	SERVICEKIT FOR VENTIL SERVICE KIT T. VALVE	REPARATURKIT FÜR UNLOADERVALVE KIT DE JOINTS POUR 600-2/	1
0	06280185	STIFT FOR OVERTRYKSVENTIL PIN FOR UNLOADER VALVE	STIFT PISTON POUR 600-2/600-3	1
0	06301922	TRANSFERS GERNI TRANSFERS GERNI	KLEBSTREIFEN GERNI AUTOCOLLANT GERNI	1
01	06240258	FRONTPLADE GRØN 600 SYS FRONT PLATE GREEN	VORERPLATTE GRÜN PLAQUE AVANT VERT	3
01	06240263	FRONTPLADE GRA FRONT PLATE GREY	VORERPLATTE GRAU PLAQUE AVANT GRIS	3
02	06070340	SKRUE, 4X10 SCREW, 4X10	SCHRAUBE, P/K, GALV. VIS	26
03	06080014	SPÆNDESKIVE, M4 TENSION DISC, M4	FEDERSCHEIBE, GALV. RONDELLE DE SERRAGE	26
04	06120346	GUMMIMANCHET, Ø50 RUBBER SLEEVE, Ø50	GUMMIMANSCHETTE F. MANOMETER JOINT POUR MANOMETRE MANO MANOMETRE	1
05	06240257	FRONTPLADE GRA FRONT PLATE GREY	VORERPLATTE GRÜN PLAQUE AVANT GRIS	1
05	06240262	FRONTPLADE GRØN FRONT PLATE GREEN	VORERPLATTE GRAU PLAQUE AVANT VERT	1
06	06220042	MANOMETER, 250 BAR PRESSURE GAUGE, 250/3600 BAR/PSI/ETP	TURBO MANOMETER MANOMETRE	1
07	06080138	SPÆNDESKIVE, M5 TENSION DISC, M5	FEDERSCHEIBE, KUPFER RONDELLE DE SERRAGE CU CUIVRE	1
08	06181304	FORSKRUNING, 17X30 SCREWED CONNECTION, 17X30	VERSCHRÄUBUNG JOINT P. MANOMETRE	1
09	06181042	MØTRIK, 19X6 NUT, 19X6	MUTTER F. MANOMETER ECROU POUR MANOMETRE	1
10	06120440	O-RING, 12.00X2.00 O-RING, 12.00X2.00	O-RING JOINT TORIQUE	1
11	06180384	KONTRAMØTRIK, 3/4" COUNTER NUT, 3/4"	GEGENMUTTER CONTRE ECROU NV 32 X 8	1
12	06261748	RAMME, G603 FRAME, G603	BODENRAHMEN CADRE, G603	1
13	06080236	FOD, Ø50X20 M10X28 FOOT, Ø50X20 M10X28	PIED, □50X20 M10X28	4
14	06200433	DUPSKO, 60X30 CAP, 60X30	BOUT, 60X30	4
15	06150166	SLAMGLAS OIL WASTE GLASS	SCHLAMMGLAS RECUPERATEUR A GAS-OIL	1
16	06180564	MØTRIK, 32X6 NUT, 32X6	MUTTER ECROU	2

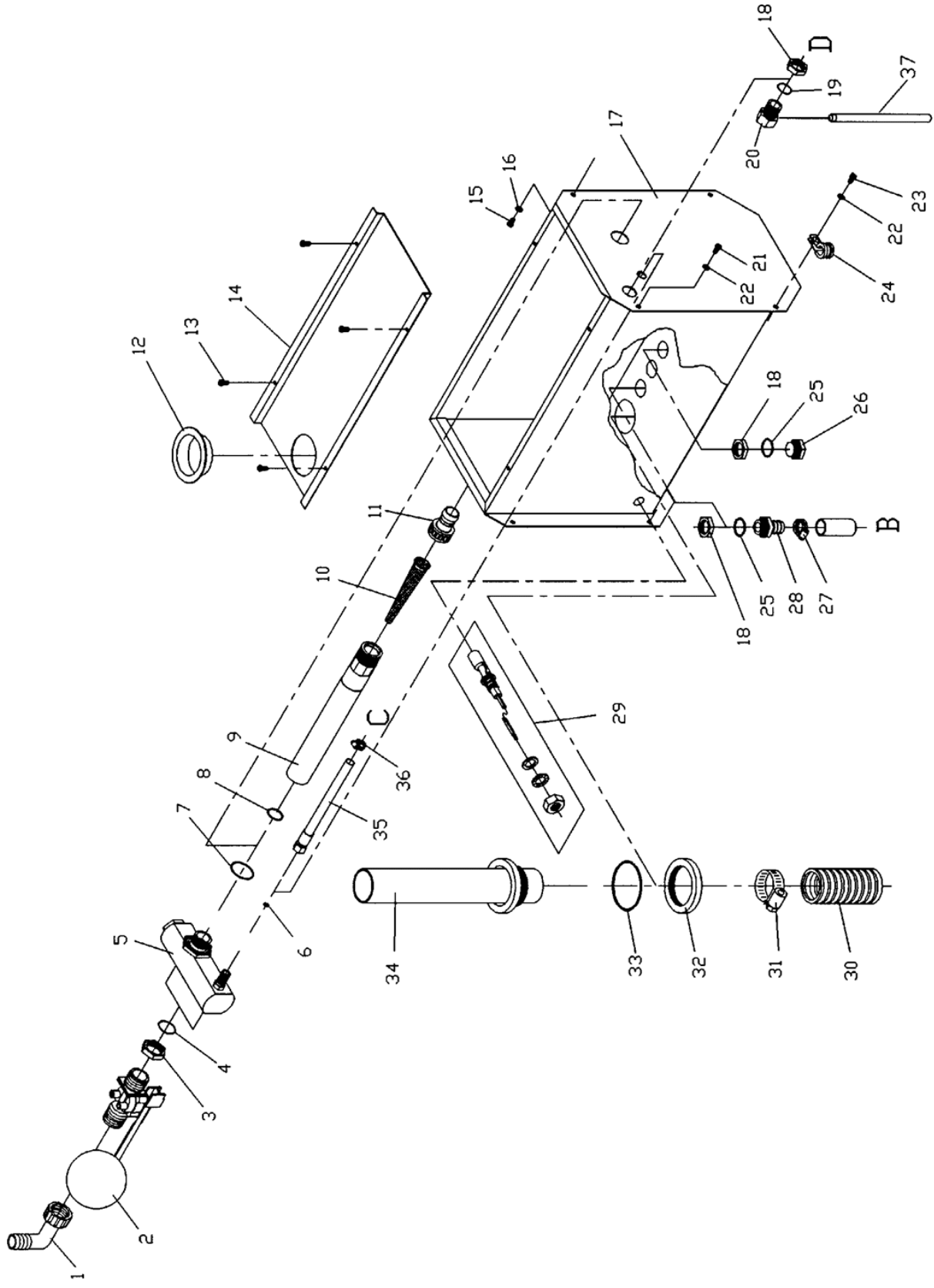
Ramme / Frame / Rahmen / Cadre

Pos.	Ref. no.	Betegnelse Description	Bezeichnung Description	System 600
17	06150107	LAG COVER	SCHRAUBSTOPFEN F. SCHLAMMGLAS BOUCHON/HUILE	1
18	06070846	KABELHOLDER CABLE HOLDER	SUPPORT DE CABLE	2
20	06080157	SPÆNDESKIVE, M6 TENSION DISC, M6	FEDERSCHEIBE, GALV. RONDELLE DE SERRAGE	2
21	06070427	SELVSKÆRENDE SKRUE, 6X16 SELF-TAPPING SCREW, 6X16	SCHRAUBE P/K, GALV. VIS 6 X 16 TETE RONDE	2
22	06030802	RØRPROP, 3/8" PLUG FOR PIPE, 3/8"	BOUCHON DE TUBE, 3/8"	1
23	06181334	MANIFOLD, 41X295 MANIFOLD, 41X295	MANIFOLD SY600 COLLECTEUR SY600	1
24	06030799	BRYSTNIPPEL, 1/2X1/2" BREAST NIPPLE, 1/2X1/2"	RACCORD A VIS, 1/2X1/2"	1
25	06080062	MØTRIK, M6 NUT, M6	SELBSTSCHLIESSENDE MUTTER, GALV. ECROU INDESSERRABLE LAITON	1
25	06080124	MØTRIK, M5 NUT, M5	SELBSTSCHLIESSENDE MUTTER ECROU INDESSERABLE GALV.	1
26	06080016	SPÆNDESKIVE, 6 MM TENSION DISC, 6 MM	FEDERSCHEIBE, GALV. RONDELLE DE SERRAGE	1
26	06080103	SPÆNDESKIVE, M5 TENSION DISC, M5	FEDERSCHEIBE, GALV. RONDELLE	1
27	06120520	KABELAFLASTNING, 230V CABLE RELIEF, 230V	DECHARGEMENT DE CABLE, 230V	1
27	06120521	KABELAFLASTNING, 400/415/440V CABLE RELIEF, 400/415/440V	ENTLASTUNG DECHARGEMENT	1
28	06070458	UNBRACO SKRUE, M5X16 ALLEN SCREW, M5X16	VIS 5 X 16	1
29	06240256	TOP/FRONT PLADE GRØN TOP PLATE GREEN	VORER/TOP PLATTE GRÜN PLAQUE SUPERIEURE G600SYS	1
29	06240261	TOPPLADE GRA TOP/SIDE PLATE GREY	VORER/TOP PLATTE GRAU PLAQUE DE TETE GRIS	1
30	06262465	UNLOADERVENTIL G600 SYS UNLOADERVENTIL G600 SYS	UNLOADERVENTIL G600 SYS VANNE DETENTE G 600SYSTEM	1
31	06110597	HØJTRYKSSLANGE, DN10/400 280 MM HIGH PRESSURE HOSE, DN10/400 280 MM	HOCHDRUCKSCHLAUCH TUYAU HP SYSTEME600-280MM	1
32	06170231	TRYKTRANSMITTER, 250 BAR PRESSURE TRANSMITTER, 250 BAR	DRUCKUEBERTRAGER TRANSMETTEUR DE PRESSION	1
33	06527041	KONTRAVENTIL NON-RETURN VALVE	RUECKSCHLAGVENTIL VANNE ANTI RETOUR	1
34	06110562	HØJTRYKSSLANGE, DN12/400 750 MM HIGH PRESSURE HOSE, DN12/400 750 MM	HOCHDRUCKSCHLAUCH F. SCHLAUCHROLLE FLEXIBLE DE DEPART HP G-6G880	1
35	06211636	FLOWSWITCH KPL., 600 SYS FLOW SWITCH CPL., 600 SYS	STROMUNGSKONTROLLE FLOW SWITCH SYSTEMEG602/3G602/3 CPL.	1

Ramme / Frame / Rahmen / Cadre

Pos.	Ref. no.	Betegnelse Description	Bezeichnung Description	System 600
36	06070085	SÆTSKRUE, M8X16 SET SCREW, M8X16	SETZSCHRAUBE, GALV. VIS D'ARRET, GALVANISEE	2
37	06080004	SPÆNDESKIVE, 8,4X17X1,6 TENSION DISC. 8,4X17X1,6	FEDERSKHEIBE, GALV. RONDELLE	2
38	06030800	PROP., 1/4" PLUG, 1/4"	CAPUCHON, 1/4"	1
39	06100359	KONTRAVENTIL, 3/8" NON-RETURN VALVE, 3/8"	RUECKSCHLAGVENTIL CLAPET ANTI-RETOUR	3
40	06110597	HØJTRYKSSLANGE, DN10/400 280 MM HIGH PRESSURE HOSE, DN10/400 280 MM	HOCHDRUCKSCHLAUCH TUYAU HP SYSTEME600-280MM	1
40	06110598	HØJTRYKSSLANGE, DN10/400 610 MM HIGH PRESSURE HOSE, DN10/400 610 MM	HOCHDRUCKSCHLAUCH TUYAU HP SYSTEME600-610MM	1
40	06110599	HØJTRYKSSLANGE, DN10/400 950 MM HIGH PRESSURE HOSE, DN10/400 950 MM	HOCHDRUCKSCHLAUCH TUYAU HP SYSTEME600-950MM	1
41	06240260	SIDEPLADE GRØN SIDE PLATE GREEN	VORERPLATTE GRÜN PLAQUE DE COTE VERT	1
41	06240265	SIDEPLADE GRÅ SIDE PALTE GREY	SEITENPLATTEN GRAU PLAQUE DE COTE GRIS	1
42	06240259	SIDEPLADE GRØN SIDE PLATE GREEN	SEITENPLATTE GRÜN PLAQUE DE COTE VERT	7
42	06240264	SIDEPLADE GRÅ SIDE PALTE GREY	SEITENPLATTEN GRAU PLAQUE DE COTE GRIS	7
43	06301709	TRANSFER "N-600-3" TRANSFER "N-600-3"	AUTOCOLLANT "N-600-3"	1
43	06301917	TRANSFER "G-600-3 SY STEM" TRANSFER "G-600-3 SY STEM"	AUTOCOLLANT "G-600-3 SY STEM"	1
44	06301097	TYPESKILT, 45X65 M/M TYPE PLATE, 45X65 M/M	TYPSCILD GRAU AUTOCOLLANT G-480	2

Vandkasse / Water tank / Wasserkasten / Cuve deau



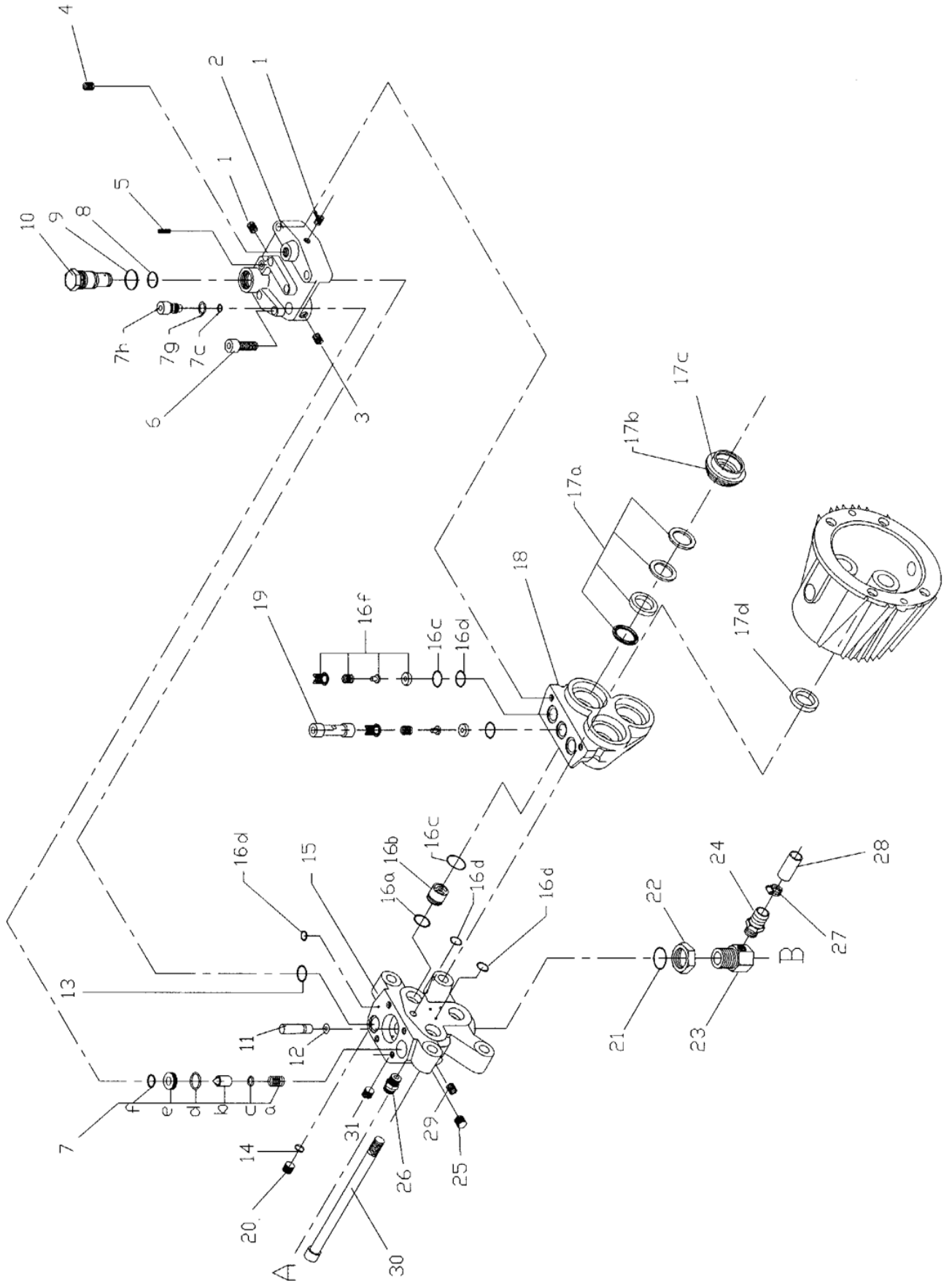
Vandkasse / Water tank / Wasserkasten / Cuve deau

Pos.	Ref. no.	Beegnelse Description	Bezeichnung Description	System600
01	06030681	VINKELSTUDS, 3/4" ANGLE SOCKET, 3/4"	WINKELSTUTZEN PLASTIK RACCORD EQUERRE PLASTIQUE	2
02	06100253	SVØMMERVENTIL FLOAT VALVE	SCHWIMMERVENTIL KOMPL. VANNE FLOTTEUR	2
03	06181339	KONTRAMØTRIK COUNTER NUT	GEGENMUTTER F SCHWIMMERVENTIL CONTRE ECROU 600-2/600-3	2
04	06120225	O-RING, 26X2 O-RING, 26X2	O-RING G100/2000 JOINT TORIQUE DIAM 26 X 2G100/G2000	2
05	06211639	FORDELERKLODS, KPL. DISTRIBUTOR BLOC, CPL.	VERTEILERKLOTZ BLOC DISTRIBUTION SYST600	1
06	06120523	KOBBERSKIVE, Ø13,5X17 COPPER DISC, Ø13,5X17	DISQUE CUIVRE 600-2/600-3	1
07	06120156	O-RING, 32X2 O-RING, 32X2	O-RING JOINT TORIQUE	1
08	06120142	O-RING, 23,5X1,78 O-RING, 23,5X1,78	O-RING F. UMLAUFVENTILKEGEL JOINT TORIQUE	1
09	06181332	TILGANGSSTUDS, Ø33X265 INLET SOCKET, Ø33X265	EINLASSSTUTZEN RACCORD D'ENTREE	1
10	06100364	VANDFILTER WATER FILTER	FILTER F. WASSEREINLASS FILTRE A EAU	1
11	06030803	VANDSLANGEFORSKRUNING, F/VANDTILGANG, 1" X 1" WATER HOSE COUPLING, FOR WATER CON., 1" X 1"	SCHLAUCHVERSCHRAUBUNG 1" RACCORD DE TUYAU	1
12	06150169	DBI DUT F40 RØD COVER	COUVERCLE	1
13	06070848	SKRUE, M4X10 SCREW, M4X10	VIS, M4X10	4
14	06211625	TOPPLADE F. VANDKASSE TOP PLATE F. WATER TANK	PLAQUE CUVE EAU G600 SYST	1
15	06070427	SELYSKÆRENDE SKRUE, 6X16 SELF-TAPPING SCREW, 6X16	SCHRAUBE P/K, GALV. VIS 6 X 16 TETE RONDE	4
16	06080114	SKIVE, M6 WASHER, M6	STERNSCHEIBE RONDELLE A DENTS	4
17	06261749	VANDKASSE, KPL. WATER TANK, CPL.	WASSERKISTEN RESERVOIR D'EAU, CPL.	1
18	06030762	KONTRAMØTRIK, 1/2"X6 COUNTER NUT, 1/2"X6	GEGENMUTTER CONTRE ECROU 1/2 X 6	4
19	06120127	KOBBERPAKNING, 21,5/25,5 COPPER GASKET, 21,5/25,5	KUPFERPAKETIEREN JOINT EN CUIVRE	1
20	06181348	FORSKRUNING SCREWED CONNECTION	RACCORD A VIS	1
21	06070849	SKRUE, M6X8 SCREW, M6X8	VIS, M6X8	2
22	06080114	SKIVE, M6 WASHER, M6	STERNSCHEIBE RONDELLE A DENTS	4

Vandkasse / Water tank / Wasserkasten / Cuve deau

Pos.	Ref. no.	Betegnelse Description	Bezeichnung Description	System
23	06070346	SKRUE, 6X10 SCREW, 6X10	SCHRAUBE, P/K, GALV. VIS	2
23	06070427	SELVSKÆRENDE SKRUE, 6X16 SELF-TAPPING SCREW, 6X16	SCHRAUBE P/K, GALV. VIS 6 X 16 TETE RONDE	2
24	06080182	KABELHOLDER, 400/415/440V CABLE HOLDER, 400/415/440V	ROHRHALTER 16 MM SUPPORT DE TUYAU 16 MM	2
25	06120158	O-RING, 24X2 O-RING, 24X2	O-RING F.-WASSERFILTER JOINT TORIQUE	3
27	06110471	SPÆNDEBÅND, 14-32 RETAINING RING, 14-32	SCHLAUCHSCHELLE HS12 FRETTE	6
28	06181335	SLANGESTUDS, 29X41 HOSE SOCKET, 29X41	SCHLAUCHSTUTZEN F. WASSERTANK RAC. DE TUYAU P.RES.D"EAU	3
29	06170136	NIVEAUFØLER, 2 M CABLE LEVEL CONTROL, 2 M CABLE	NIVEAUWAECHTER JAUGE DE NIVEAU	1
30	06110603	OVERLØBSSLANGE, Ø50X1050 OVERFLOW HOSE, Ø50X1050	TUYAU TROP-PLEIN, □50X1050	1
31	06110605	SPÆNDEBÅND, Ø46XØ63X8 RETAINING RING, Ø46XØ63X8	SCHLAUCHSCHELLE FRETEDIA. 46XØ63X8 DIA. 46XØ63X8	1
32	06181343	MØTRIK, Ø80X10 2" NUT, Ø80X10 2"	MUTTER ECROU POUR 600-2 / 600-3	1
33	06120522	O-RING, Ø68X2 O-RING, Ø68X2	O-RING JOINT TORIQUE POURDIA. 68DIA. 68X2	1
34	06211637	OVERLØBSRØR, 600 SYS OVERFLOW PIPE, 600 SYS	TUBE TROP-PLEIN, 600 SYS	1
35	06110607	SLANGE, 1/4"-20 BAR HOSE, 1/4".20 BAR	TUYAU SYSTEME 600	1
36	06110494	SPÆNDEBÅND, 10-12 RETAINING RING, 10-12	SCHLAUCHSCHELLE 8- FRETTE	1
37	06051006	RØR FOR TILBAGESLAG, Ø13X1X180 PIPE FOR BACK-PRESSURE, Ø13X1X180	TUBE DE CONTRE-COUP, □13X1X180	1

Pumpe 600-3 / Pump 600-3 / Pompe 600-3 / Pomp 600-3



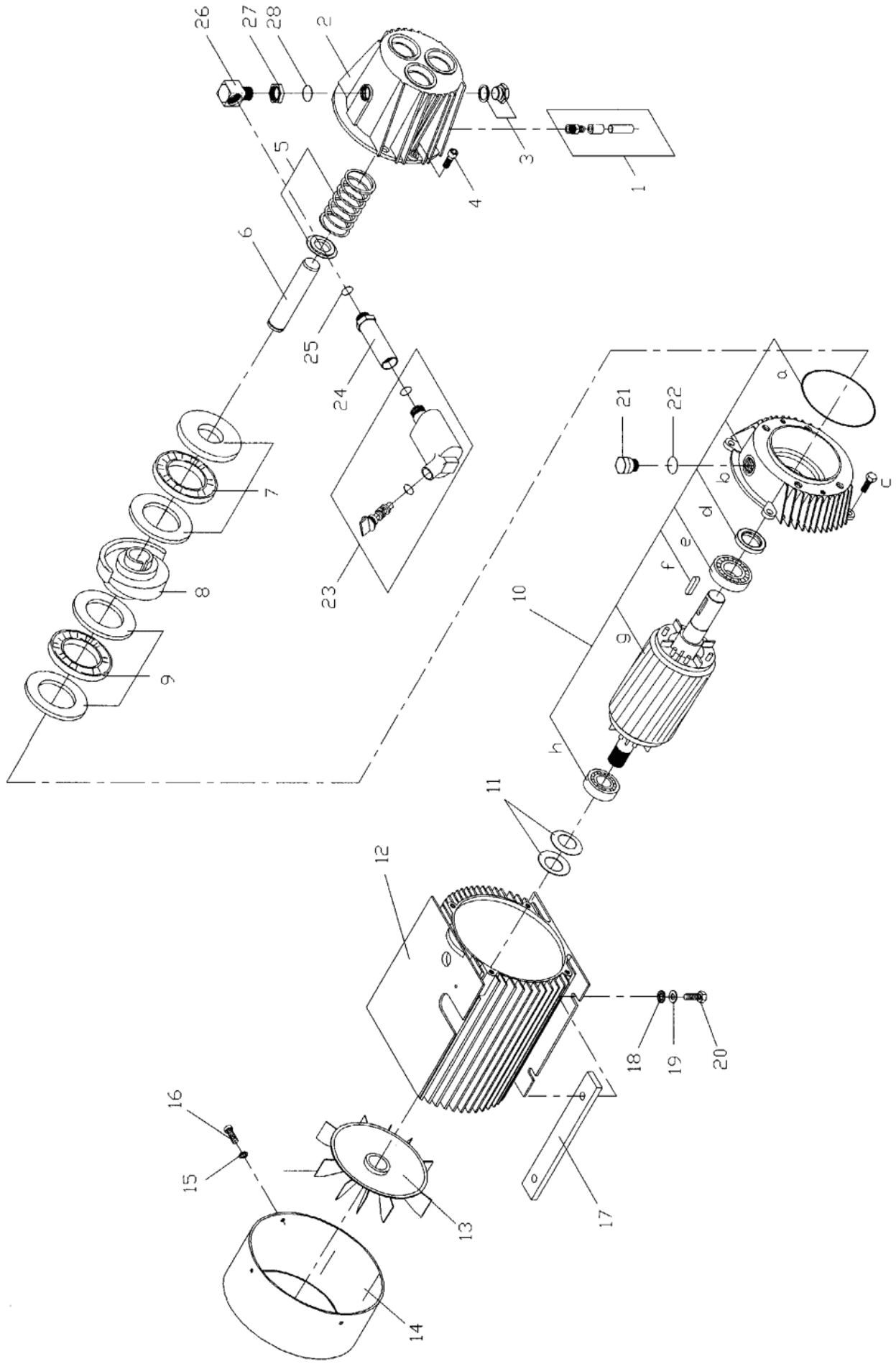
Pumpe 600-3 / Pump 600-3 / Pumpe 600-3 / Pomp 600-3

Pos.	Ref. no.	Betegnelse Description	Bezeichnung Description	System 600
0	06261445	O-RINGSKIT FOR PUMPE, 600/660/5/6000 O-RING KIT FOR PUMP, 600/660/5/6000	KIT O-RINGE F. PUMPE KIT JOINT TORIQUE P.POMPE	5
01	06030554	RØRPROP, 1/8" PLUG FOR PIPE, 1/8"	ROHRSTOPFEN RACCORD	5
02	06180755	TRYKMANIFOLD, 600 PRESSURE MANIFOLD, 600	DRUCKMANIFOLD COLLECTEUR PRESSION G 600	5
03	06180998	RØRPROP, 1/8" PLUG FOR PIPE, 1/8"	ROHRPFROPFEN BOUCHON DE TUBENE EXTERIEUNE EXTERIEUR	5
04	06030472	PROP MESSING, 1/4" BRASS PLUG, 1/4"	PFROPFEN MESSING BOUCHON	5
05	06070755	UNBRACO PINOLSKRUE, M5X16 ALLEN POINTED SCREW, M5X16	REITSTOCKSCHRAUBE INWENDIG 6 KT VIS PIVOT INTERIEURE 6KTDDIN915	5
06	06070510	UNBRACO SKRUE, M10X40 ALLEN SCREW, M10X40	IMBUSSBOLZEN, GALV. BOULON G 600	5
07	06260899	SIKKERHEDSVENTILKIT SAFETY VALVE KIT, G 600	SICHERHEITSVENTILKIT KIT VANNE BY PASS G-600-	5
08	06120182	O-RING, 16X2 O-RING, 16X2	O-RING JOINT TORIQUE	5
09	06120270	O-RING, 15.6X1,78 O-RING, 15.6X1,78	O-RING JOINT TORIQUE 15.6X1.78	5
1-	06262258	TOPSTYKKE, KPL., 600 SYS CYLINDER HEAD, CPL., 600 SYS	CULASSE DE CYLINDRE, CPL., 600 SYS	5
10	06180918	BLÆNDPROP, 24X56 HOLE PLUG, 24X56	BLINDSTOPFEN F. WASSERMENGEREGELUNG CAPUCHON DE COUVERTURE	5
11	06180913	BLÆNDPROP, Ø12X35 HOLE PLUG, Ø12X35	BLINDSTOPFEN F. G-600 FLEX CAPUCHON DE COUVERTURE G-600 FLEX	5
12	06120042	O-RING, 9 1X1,6 O-RING, 9, 1X1,6	O-RING JOINT TORIQUE	5
13	06120415	O-RING, 17.17X1,78 O-RING, 17, 17X1,78	O-RING JOINT TORIQUE 17,17X1,78	5
14	06120087	O-RING, 5.28X1,78 O-RING, 5,28X1,78	O-RING JOINT TORIQUE	5
15	06180749	PUMPEHOVED, G600 PUMP HEAD, G600	PUMPENKOPF CULASSE G 600	5
16	06260894	VENTILKIT VALVE KIT	VENTILKIT KIT POMPE A EAU CLAPETS	5
16-17	06261446	KIT FOR PUMPE, 660/5000 KIT FOR PUMP, 660/5000	KIT F. PUMPE G-660/5000 KIT POMPE A EAU (NOUVEAU)	5
17	06261444	MANCHET KIT FOR KERAMIKSTEMPEL CUP KIT FOR CERAMIC PISTON	KIT F. MANSCHETTE G-660/5000 KIT POMPE A EAU COUPELLES	5
18	06180750	CYLINDERSTYKKE CYLINDER PIECE	ZYLINDERSTUECK CULASSE G 600	5
19	06180753	AFSTANDSSTYKKE, Ø16X55 DISTANCE PIECE, Ø16X55	ZWISCHENSTUECK ENTRETOISE G 600	5

Pumpe 600-3 / Pump 600-3 / Pumpe 600-3 / Pomp 600-3

System 600

Pos.	Ref. no.	Beegnelse Description	Bezeichnung Description	
20	06181061	PROP, 1/8"RGX8 PLUG, 1/8"RGX8	PFRPFEN F. OELMESSTAB CAPUCHON	5
21	06120442	O-RING, 25.0X3.0 O-RING, 25.0X3.0	O-RING JOINT TORIQUE	5
22	06181129	MØTRIK, 36X8 NUT, 36X8	GEGENMUTTER ECROU G-3000	5
23	06181128	FORDELERKLODS, 32X52 DISTRIBUTOR BLOC, 32X52	VERTEILERKLOTZ BLOC DE DISTRIBUTION	5
24	06180943	SLANGENIPPEL, 22X35 HOSE NIPPLE, 22X35	SCHLAUCHNIPPEL RACCORD DE TUYAU	5
25	06030642	RØRPROP, 3/8" PLUG FOR PIPE, 3/8"	ROHRPFROPFEN BOUCHON DE TUBE	5
26	06030775	HYDRAULIKFORSKRUNING, 3/8"-12 HYDRAULIC SCREWED CONNECTION, 3/8"-12	EINLASS NIPPEL JOINT TUYAU COUV. +RACC.	5
27	06110471	SPÆNDEBAND, 14-32 RETAINING RING, 14-32	SCHLAUCHSCHELLE HS12 FRETTE	5
28	06110600	TILGANGSSLANGE, 3/4"X490 INLET HOSE, 3/4"X490	TUYAU D'ENTREE, 3/4"X490	2
28	06110601	TILGANGSSLANGE, 3/4"X800 INLET HOSE, 3/4"X800	TUYAU D'ENTREE, 3/4"X800	2
28	06110602	TILGANGSSLANGE, 3/4"X1180 INLET HOSE, 3/4"X1180	TUYAU D'ENTREE, 3/4"X1180	1
29	06030472	PROP MESSING, 1/4" BRASS PLUG, 1/4"	PFRPFEN MESSING BOUCHON	2
30	06070492	UNBRACO SKRUE, M12X200 ALLEN SCREW, M12X200	IMBUSSBOLZEN BOULON 12X200 G 600	8
31	06030661	RØRPROP, 1/8" PLUG FOR PIPE, 1/8"	ROHRSTOPFEN BOUCHON	2



Motor 600-2 / Motor 600-2 Mach.No.< 440212010302 / Motor / Moteur 600-2 Mach.No.< 440212010302

System 600

Pos.	Ref. no.	Bezeichnung Description	Bezeichnung Description
01	06527042	SLAMSLANGE, 1200 MM OIL WASTE HOSE, 1200 MM	SCHLAMMSCHLAUCH TUYAU A PATE, 1200 MM
01	06527043	SLAMSLANGE, 510 MM OIL WASTE HOSE, 510 MM	SCHLAMMSCHLAUCH TUYAU A PATE, 510 MM
01	06527044	SLAMSLANGE SEDIMENT HOSE	SCHLAMMSCHLAUCH
02	06180757	STEMPELSTYR, 600 PISTON GUIDE, 600	KOLBENFUHRUNG GUIDE PISTON 640-660-690
03	06280959	OLIEAFTAPNINGSPROP KPL., G100/G2000 DRAIN PLUG CPL., G100/G2000	OELABZAPFSTOPFEN, KPL. BOUCHON
04	06070455	UNBRACO SKRUE, M8X25 ALLEN SCREW, M8X25	IMBUSSBOLZEN, GALV. BOULON GALV.
05	06261037	FJEDERKIT SPRING KIT	FEDERKIT KIT RESSORT G600(3 PIECES)
06	06261430	STEMPELKIT, KERAMIK 1 STK. PISTON KIT, CERAMIC 1 PCS.	KIT F. KOLBEN KPL. G-660/5000 KIT PISTONS (NOUVEAU) G-60/5000
07	06260897	TRYKLEJEKIT PRESSURE BEARING KIT, G600	DRUCKLAGERKIT KIT ROULEMENT G 600-600/A-600/AL-POWER
08	06180743	SKRÅSKIVE, 7,11 CAM DISC, 7,11	BOGENSCHEIBE 7,11 DISQUE INCLINE 7,11 G5000
08	06180746	SKRÅSKIVE, 8,24 CAM DISC, 8,24	BOGENSCHEIBE DISQUE INCLINE G 600
09	06260898	SKRÅKIVELEJEKIT CAM DISC BEARING KIT	BOGENSCHEIBELAGERKIT KIT ROULEMENT DISQUE G 60C. G600/ALPOWER
10	06270267	SERVICE KIT ROTOR	SERVICEKIT ROTOR ROTOR660-PL.FOURNI=270263
10A	06120310	O-RING, 117X3 O-RING, 117X3	O-RING JOINT TORIQUE G 600
10B	06181069	LEJEFLANGE BEARING FLANGE	LAGERFLANSCH BRIDE DE PALIER-12X2AILET
10C	06070455	UNBRACO SKRUE, M8X25 ALLEN SCREW, M8X25	IMBUSSBOLZEN, GALV. BOULON GALV.
10D	06120307	SIMMERRING, 30X47X7 SEALING RING, 30X47X7	OELDICHTUNGSRING JOINT SPI 30X47X7 G 600ILILE
10E	06140040	KUGLELEJE, 8X7X35 BALL BEARING, 8X7X35	KUGELLAGER 6206 2ZR, C3.L12 ROULEMENT 6206 G 600
10F	06280100	FEDER, 8X7X35 KEY, 8X7X35	FEDERFORM A DS96 CLAVETTE G-600
10G	06270156	ROTOR M/AKSEL, SE 270205 ROTOR WITH AXLE, SE 270205	ROTOR M/ACHSE ROTOR G-600 G-600
10H	06140039	KUGLELEJE BALL BEARING	KUGELLAGER 6205 2ZR, C3.L12 ROULEMENT 6205 G 600
11	06280103	TALLERKENFJEDER, 51,5X35, SPRING, 51,5X35,	TELLERFEDER 51,5X35X50,6X1,5 RESSORT G-600

Motor 600-3 / Motor 600-3 Mach.No. < 450301000295 / Motor / Moteur 600-3 Mach.No. < 450301000295

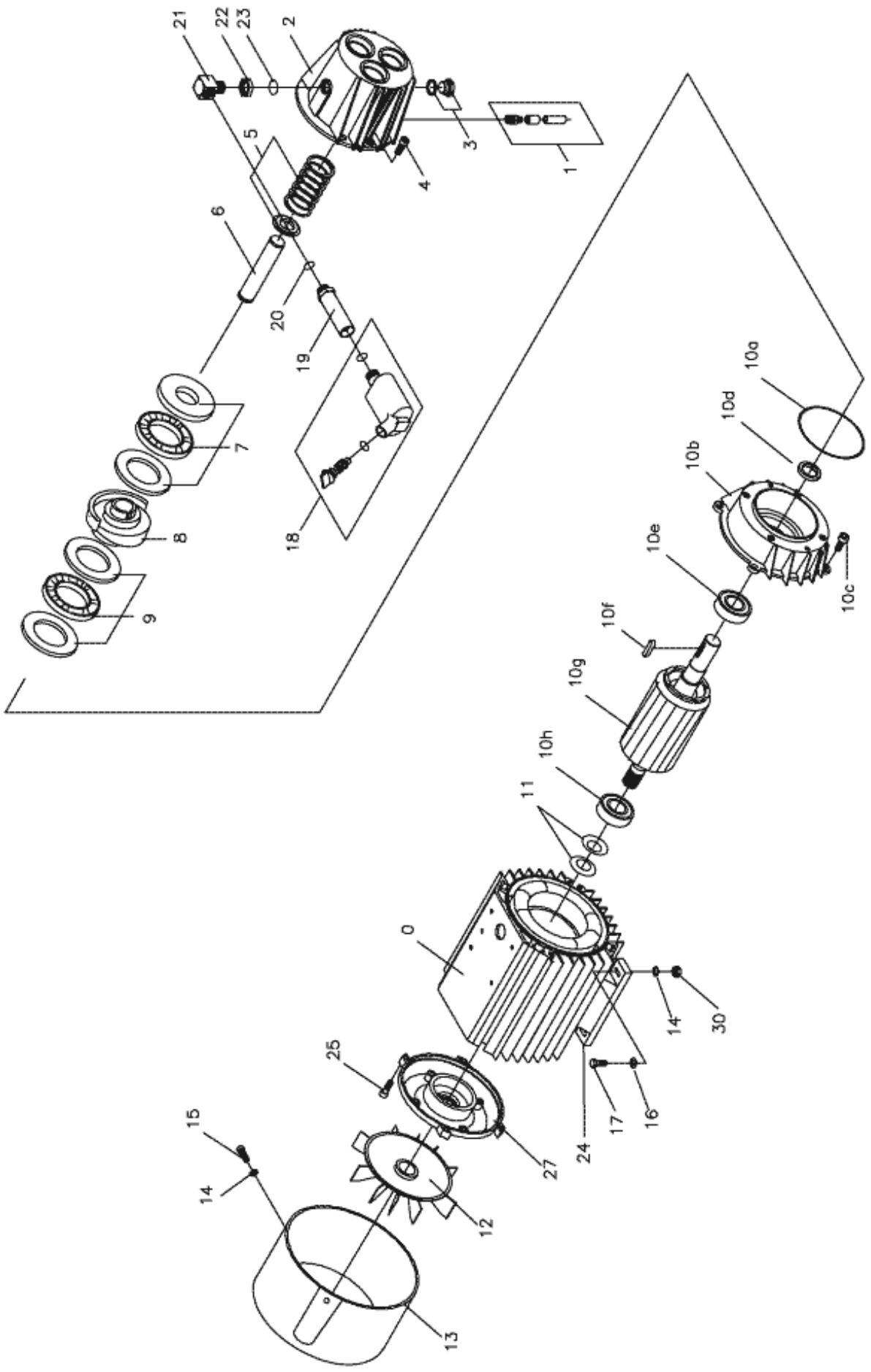
System 600

Pos.	Ref. no.	Betegnelse Description	Bezeichnung Description
12	06270161	STATORHUS M. STATOR , 3X230/400V, 50 HZ STATOR HOUSING W. STATOR, 3X230/400V 50 HZ	STATORGEHAEUSE M. STATOR G600/POWER ENVELP.STATOR PLUS FOURNI
12	06270203	STATORHUS M. STATOR , 3X415V STATOR HOUSING W. STATOR, 3X415V	STATORGEHAEUSE M. STATOR CORPS DE STATOR AVEC STATOR
12	06270266	STATORHUS M/STATOR	STATORGEHAEUSE M/STATOR CORPS DE STATOR AVEC STATOR G-660
13	06270141	VENTILATOR FAN	VENTILATOR F. G-600 VENTILATEUR = 270371
14	06270178	VENTILATORSKERM FAN COVER	VENTILATORDECKEL PROTECTION DE SOUFFLANTEAABS NOIR 2,5MM
15	06080088	STJERNESKIVE, GALV., Ø5 TOOTH LOCK WASHER, GALV., Ø5	STERNESCHIBE, GALV. ROND A DENTS
16	06070525	TAP TITE P/H, Ø5X8 TAP TITE P/H, Ø5X8	TAP TITE P/K PH TAP TITE
17	06040181	SPÆNDEJERN FOR MOTOR, 30X8X210 TIGHTENING BAR FOR MOTOR, 30X8X210	SPANNEISEN F. MOTOR FER DE SERRAGE POUR MOTEUR
18	06080018	STJERNESKIVE, M8 TOOTH LOCK WASHER, M8	FEDERTELLERSCHIBE, GALV. RONDELLE D"ETOILE
19	06080004	SPÆNDESKIVE, 8,4X17X1,6 TENSION DISC, 8,4X17X1,6	FEDERSCHIBE, GALV. RONDELLE
2-6	06262264	STEMPELSTYR, KPL., 600 SYS PISTON GUIDE, CPL., 600 SYS	GUIDE PISTON, CPL., 600 SYS
20	06070452	UNBRACO SKRUE, M8X20 ALLEN SCREW, M8X20	IMBUSSBOLZEN, GALV. INTRAVIS 8X20 GALV. GALV.
21	06181340	PROP, 24X26 PLUG, 24X26	PFROPFEN F D-LAGERDECKEL CAPUCHON P.COUV.DE.BUTEEGG600
22	06120466	O-RING, 18,72X2,62 O-RING, 18,72X2,62	O-RING JOINT TORIQUE
23	06261718	OLIEGLASKIT OIL GLASS KIT	ÖLGLAS KIT VERRE HUILE
23A	06120282	O-RING, 14X1,78 O-RING, 14X1,78	O-RING JOINT TORIQUE 14 X 1,78
23B	06120466	O-RING, 18,72X2,62 O-RING, 18,72X2,62	O-RING JOINT TORIQUE
24	06181331	FORSKRUNING, 27X100 SCREWED CONNECTION, 27X100	VERSCHRAUBUNG F. ÖLGLAS JOINT P. VERRE D"HUILE
25	06120466	O-RING, 18,72X2,62 O-RING, 18,72X2,62	O-RING JOINT TORIQUE
26	06181329	VINKELFORSKRUNING, 27X27X46,5 ANGLE SCREWED CONNECTION, 27X27X46,5	WINKELVERSCHRAUBUNG F. ÖLEINFÜLL RAC.EQUER.P.REMPL.D"HUILE
27	06181330	KONTRAMØTRIK, 27X6 COUNTER NUT, 27X6	GEGENMUTTER F. ÖLEINFÜLLEN CONTREÉCROU P.REMP.D"HUIL
28	06120382	O-RING, 20,00X2,00 N70 O-RING, 20,00X2,00 N70	O-RING JOINT TORIQUE 20X2 G-5000

Motor 600-3 / Motor 600-3 Mach.No.< 450301000295 / Motor / Moteur 600-3 Mach.No.< 450301000295

System 600

Pos.	Ref. no.	Betegnelse Description	Bezeichnung Description	
9 - 13	06270263	EL-MOTOR, 230/400V 50 HZ ELECTRIC MOTOR, 230/400V 50 HZ	ELEKTROMOTOR G-660 MOTEUR ELECTRIQUE G-660	5
9 - 13	06270264	EL-MOTOR, 230/400V 60 HZ ELECTRIC MOTOR, 230/400V 60 HZ	ELEKTROMOTOR G-660 MOTEUR ELECTRIQUE G-660	5
9 - 13	06270265	EL-MOTOR, 3X415V 50 HZ ELECTRIC MOTOR, 3X415V 50 HZ	ELEKTROMOTOR MOTEUR ELECTRIQUE G-660	5



Motor 600-2 Mach.No. > 440212010301 / Motor 600-2 Mach.No. > 440212010301 / Motor / Moteur 600-2 Mach.No. > 440212010301

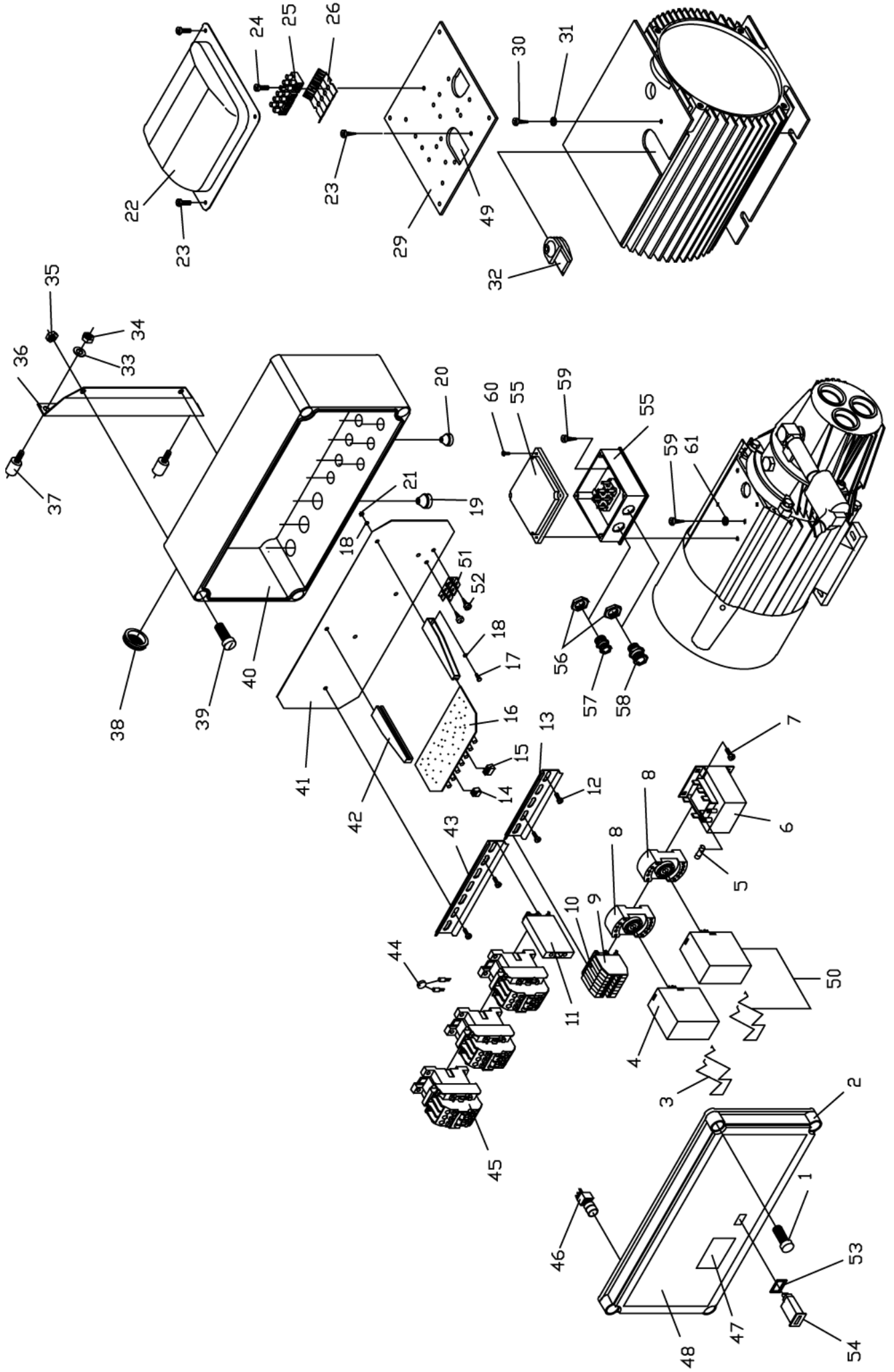
System 600

Pos.	Ref. no.	Bezeichnung Description	Bezeichnung Description	
0	06270421	MOTOR KPL KOLD 3X400V MOTOR CPL., 3X230-415V 50HZ	MOTEUR CPL., 3X230-415V 50HZ	5
01	06527043	SLAMSLANGE, 510 MM OIL WASTE HOSE, 510 MM	SCHLAMMSCHLAUCH TUYAU A PATE, 510 MM	4
01	06527044	SLAMSLANGE SEDIMENT HOSE	SCHLAMMSCHLAUCH	4
02	06180757	STEMPELSTYR, 600 PISTON GUIDE, 600	KOLBENFUHRUNG GUIDE PISTON 640-660-690	5
02-6	06262264	STEMPELSTYR, KPL., 600 SYS PISTON GUIDE, CPL., 600 SYS	GUIDE PISTON, CPL., 600 SYS	5
03	06260959	OLIEFTAPNINGSPROP KPL., G100/G2000 DRAIN PLUG CPL., G100/G2000	OELABZAPFSTOPFEN, KPL. BOUCHON	5
04	06070455	UNBRACO SKRUE, M8X25 ALLEN SCREW, M8X25	IMBUSSBOLZEN, GALV. BOULON GALV.	5
05	06261037	FJEDERKIT SPRING KIT	FEDERKIT KIT RESSORT G600(3 PIECES	5
06	06261430	STEMPELKIT, KERAMIK 1 STK. PISTON KIT, CERAMIC 1 PCS.	KIT F. KOLBEN KPL. G-660/5000 KIT PISTONS (NOUVEAU) G-60/5000	5
07	06260897	TRYKLEJEKIT PRESSURE BEARING KIT, G600	DRUCKLAGERKIT KIT ROULEMENT G 600-600/A-600/AL-POWER	5
08	06180743	SKRASKIVE, 7,11 CAM DISC, 7,11	BOGENSCHEIBE 7,11 DISQUE INCLINE 7,11 G5000	5
08	06180746	SKRASKIVE, 8,24 CAM DISC, 8,24	BOGENSCHEIBE DISQUE INCLINE G 600	5
09	06260898	SKRASKIVELEJEKIT CAM DISC BEARING KIT	BOGENSCHEIBELAGERKIT KIT ROULEMENT DISQUE G 60C. G600/ALPOWER	5
10	06270434	ROTORAKSEL, 642/662/692 ROTOR AXLE, 642/662/692	KIT SERVI. ROTOR 642/662/ 692	5
10a	06120310	O-RING, 117X3 O-RING, 117X3	O-RING JOINT TORIQUE G 600	5
10b	06181564	LEJEFLANGE BERARING FLANGE	LAGERFLANSCH BRIDE DE PALIER 5X2AILETT	5
10c	06070746	UNBRACO SKRUE, M8X35 ALLEN SCREW, M8X35	IMBUSSBOLZEN, GALV. BOULON A TETE CYLINDRIQUE	5
10d	06120307	SIMMERRING, 30X47X7 SEALING RING, 30X47X7	OELDICHTUNGSRING JOINT SPI 30X47X7 G 600LILE	5
10e	06140040	KUGELEJE, 8X7X35 BALL BEARING , 8X7X35	KUGELLAGER 6206 2ZR C3.L12 ROULEMENT 6206 G 600	5
10f	06280100	FEDER, 8X7X35 KEY, 8X7X35	FEDERFORM A DS96 CLAVETTE G-600	5
10g	06270425	ROTORAKSEL, B112 ROTOR AXLE, B112	ARBRE DE ROTOR, B112	5
10h	06140008	LEJE F. EL-MOTOR	LAGER F/ELEKTROMOTOR ROULEMENT P.MOTEUR EL.	5

Motor 600-2 Mach.No. > 440212010301 / Motor 600-2 Mach.No. > 440212010301 / Motor / Moteur 600-2 Mach.No. > 440212010301

System 600

Pos.	Ref. no.	Bezeichnung Description	Bezeichnung Description	
11	06280206			5
12	06270432	VENTILATOR M. LAS FAN	AILETTE DE VENTILATEUR	5
13	06270430	VENTILATORSKÆRM FAN COVER	PROTECTION DE VENTILATEUR	5
14	06080004	SPÆNDESKIVE, 8,4X17X1,6 TENSION DISC, 8,4X17X1,6	FEDERSKIBE, GALV. RONDELLE	5
15	06070903	UNBRACO SKRUE, M8X16 ALLEN SCREW, M8X16	VIS A TETE CYLINDRIQUE, M8X16	5
16	06080201	SPÆNDESKIVE, M8 TENSION DISC, M8	FEDERSKIBE, GALV. DISQUE	5
17	06070011	SKRUE, M8X30 SCREW, M8X30	SETZSCHRAUBE, GALV. VISE E	5
18	06261718	OLIEGLASKIT OIL GLASS KIT	ÖLGLAS KIT VERRE HUILE	5
19	06181331	FORSKRUNING, 27X100 SCREWED CONNECTION, 27X100	VERSCHRAUBUNG F. ÖLGLAS JOINT P. VERRE D'HUILE	5
20	06120466	O-RING, 18,72X2,62 O-RING, 18,72X2,62	O-RING JOINT TORIQUE	5
21	06181329	VINKELFORSKRUNING, 27X27X46,5 ANGLE SCREWED CONNECTION, 27X27X46,5	WINKELVERSCHRAUBUNG F. ÖLEINFÜLL RAC.EQUER.P.REMPL.D'HUILE	5
22	06181330	KONTRAMØTRIK, 27X6 COUNTER NUT, 27X6	GEGENMUTTER F. ÖLEINFÜLLEN CONTREÉCROU P.REMP.D'HUIL	5
23	06120383	O-RING, 11X1.5 O-RING, 11X1.5	O-RING JOINT TORIQUE G-4000	5
24	06270435	MOTOR FOOT		8
25	06070746	UNBRACO SKRUE, M8X35 ALLEN SCREW, M8X35	IMBUSSBOLZEN, GALV. BOULON A TETE CYLINDRIQUE	7
27	06270415	MOTORFLANGE, B100 MOTOR FLANGE, B100	BRIDE DE MOTEUR 4802	5
30	06080038	MØTRIK, M8 NUT, M8	SELBSTSCHLIESSENDE MUTTER, GALV. ECROU	7



EI-komponenter / Electric components / Elektrische komponente / Composantes électrique

System 600

Pos.	Ref. no.	Betegnelse Description	Bezeichnung Description	
01	06200432	SKRUE SCREW	VIS	4
02	06200437	LAG F. ELKASSE, 603 COVER F. ELECTRIC BOX, 603	COUVERCLE DE BOITE ELECTRIQUE, 603	1
03	06040182	HOLDERBØJLE HOLDER	HALTUNGSBUEGEL F. STROEMUNGSMODUL CROCHET DE FIXATION DULE DDULE DE FLOW	1
04	06160989	RELÆ F. TRYKTRANSMITTER RELAY F. PRESSURE TRANSMI	GRENZTASTER RELAIS TRANSMETT=160980 TO-COLLANT	1
05	06160067	FINSIKRING, 2 AMP. FUSE, 2 AMP.	SICHERUNG 2 AMP. 4792120207 FUSIBLE	1
06	06160697	TRANSFORMER, 415V/24/15V 50HZ TRANSFORMER, 415V/24/15V 50HZ	TRANSFORMATOR ELEKTRODYN M/SICHER. TRANSFORMATEUR ELECTRODYN. A/FUSIBLE	1
06	06160884	TRANSFORMER, 220/380V - 24V TRANSFORMER, 220/380V - 24V	TRANSFORMATOR TRANSFORMATEUR	1
06	06160957	TRANSFORMER, 440V, 50/60HZ TRANSFORMER, 440V, 50/60HZ	TRAF0 EI/60/31/35 TRANSFORMATEUR	1
07	06070763	SKRUE, 3.5X6 SCREW 3.5X6,5	SCHRAUBE 3.5X6,5 VIS 3.5X6,5	2
08	06160691	SOKKEL, 11 P BASE, 11 P	SOKKEL F/RADIOEMPFÄENGER SOCLE POUR RECEPTEUR	2
09	06160979	ENDEPLADE GRA END PLATE GREY	PLAQUE D'EXTRÉMITÉ GRIS	1
10	06160906	KLEMRÆKKE TERMINAL STRIP	KLEMMREICHE GRAU PLAQUE A BORNES	7
11	06160978	JORDKLEMME, 16QMM EARTH TERMINAL, 16QMM	JONCTION DE TERRE, 16QMM	1
12	06070362	SKRUE, 5X8 SCREW, 5X8	SCHRAUBE P/K, GALV. VIS T/L GALV.	4
13	06160992	DIN-SKINNE, 7X125 MM DIN RAIL, 7X125 MM	DIN CERCLE, 7X125 MM	1
14	06160970	PRINTSTIK, 2 POL PRINT PLUG, 2 POL	PRINTSTECKER 2-POLAIRES PRISE DE COU.PP. UNITE DE CONTROLE	4
15	06160971	PRINTSTIK, 3 POL PRINT PLUG, 3 POL	PRINTSTECKER 3-POLAIRES PRISE DE COU.PP. UNITE DE CONTROLE	3
16	06170230	PRINT, SYS 600/800 PRINT, SYS 600/800	PRINT SYS 600/800 CARTE ELECTRONIQUE	1
17	06070058	SKRUE, M4X16 SCREW, M4X16	SCHRAUBE, ZIK, GALV. VIS, T/C GALVANISEE	2
18	06080108	SKIVE, M4 WASHER, M4	SCHEIBE, GALV. DISQUE GALV.	4
19	06120519	PAKDASE, 14-20 STUFFING BOX, 14-20	PRESSE-ETOUPE, 14-20	3
20	06120111	PAKDASE, C 5-7 STUFFING BOX, C 5-7	STOPFBUCHSE PRESSE-ETOUPE CAOUTCHOUC	9

El-komponenter / Electric components / Elektrische komponente / Composantes électrique

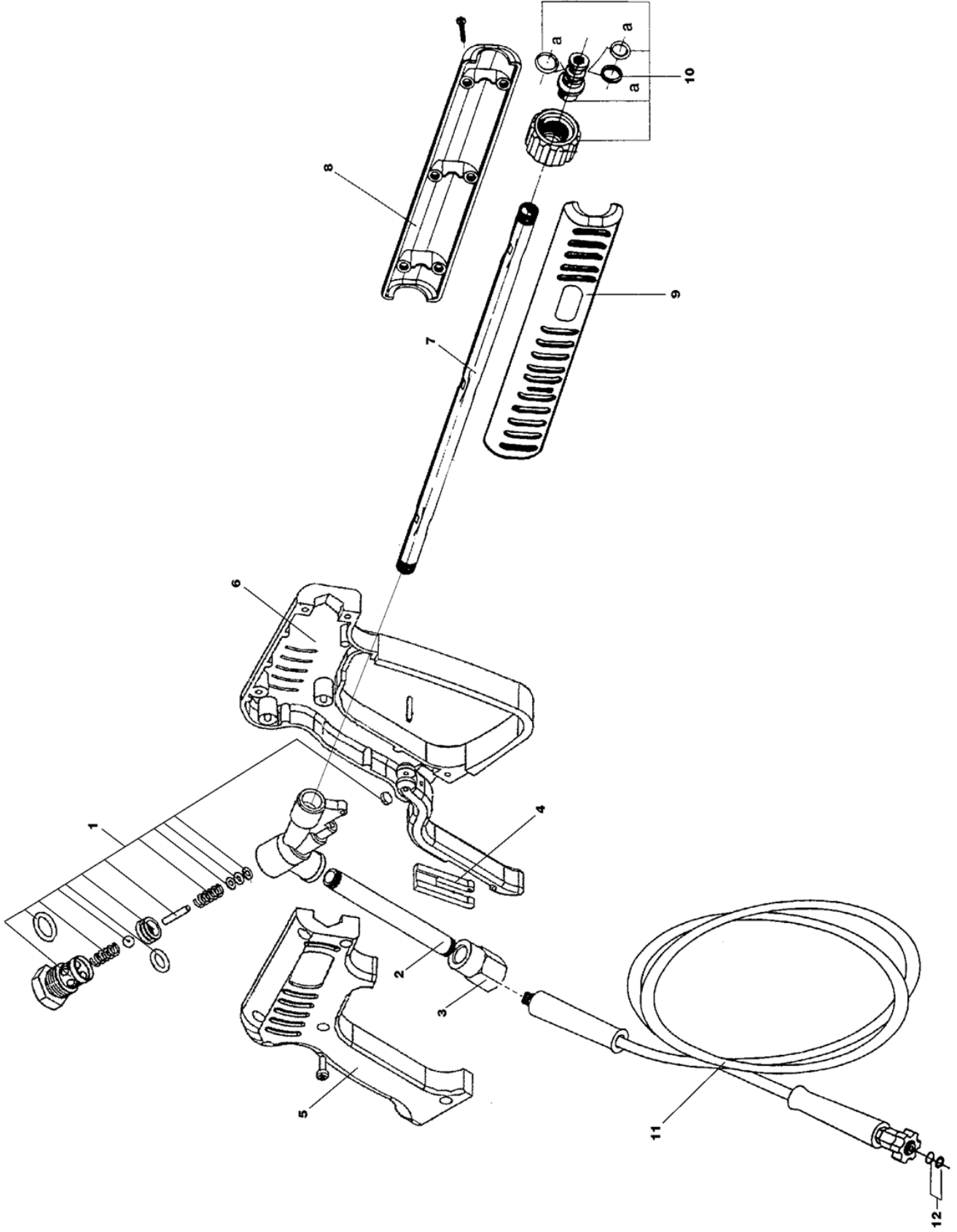
System 600

Pos.	Ref. no.	Betegnelse Description	Bezeichnung Description
21	06080168	MØTRIK, M4 NUT, M4	SELBSTSCHLIESSENDE MUTTER ECROU INDESSERABLE
22	06061362	EL-BOX SY S600 EL-BOX SY S600	
23	06070466	SKRUE, 4X12 SCREW, 4X12	TAP TITE P/K, GALV. VIS 4 X 12
24	06070512	SKRUE, 3X16 SCREW, 3X16	TAP TITE, P/K TAP TITE
25	06160988	KRONEMUFFE, Ø4,2 7PCS CROWN SOCKET, Ø4,2 7PCS	MANCHON A CRENEAUX, □4,2 7PCS
26	06160764	UNDERLAGSLADE WASHER	UNTERLAGSSCHEIBE PLAQUE DE SUPPORT
29	06160714	GUMMIPAKNING RUBBER GASKET	GUMMIDICHTUNG F/ELEKTRO-KASTEN JOINT EN CAOUTCHOUC P. BOX ELEC.
30	06070511	TAP TITE P/H, M4X8 TAP TITE P/H, M4X8	SCHRAUBE VIS 4X8 HFC 266
31	06080046	STJERNESKIVE, M4 TOOTH LOCK WASHER, M4	STERNSCHEIBE, GALV. RONDELLE
32	06160713	KABELGENNEMFØRING, 50X32X21,5 CABLE GROMMET, 50X32X21,5	KABELDURCHFUEHRUNG G500/G600 TRAVERSEE DE CABLE G500/G600
33	06080114	SKIVE, M6 WASHER, M6	STERNSCHEIBE RONDELLE A DENTS
34	06080058	MØTRIK, M6 NUT, M6	MUTTER, GALV. ECROU
35	06080062	MØTRIK, M6 NUT, M6	SELBSTSCHLIESSENDE MUTTER, GALV. ECROU INDESSERABLE LAITON
36	06061355	BESLAG, 265X63X1,25 FITTINGS, 265X63X1,25	ARMATURE, 265X63X1,25
37	06080235	SVINGNINGSDÆMPER, Ø20X15/M6X18/M6 VIBRATION DAMPER, Ø20X15/M6X18/M6	AMORTISSEUR DE VIBRATION, □20X15/M6X18/M6
39	06070850	UNBRACO SKRUE, M6X16 ALLEN SCREW, M6X16	VIS A TETE CYLINDRIQUE, M6X16
40	06200435	ELKASSEBUND, 603 BOTTOM FOR ELECTRIC BOX, 603	FOND DE BOITE ELECTRIQUE, 603
41	06061363	BAGPLADE F. EL-KASSE, 360X136X1,5 REAR PLATE FOR ELECTRIC BOX, 360X136X1,5	PLAQUE ARRIERE P. BOITE ELECTRIQUE, 360X136X1,5
42	06170140	PRINTKORTHOLDER PRINT CARD HOLDER	HALTER F. PRINTKARTE SUPPORT POUR PRINT
43	06160910	DIN-SKINNE, 7,5X175 MM DIN RAIL, 7,5X175 MM	DIN CERCLE, 7,5X175 MM
44	06211635	VARIATOR NOISE FILTER	VARIATOR KOMPLETT FILTRE DE BRUIT
45	06160463	KONTAKTOR, 25A 24V/50-60HZ CONTACTOR, 25A 24V/50-60HZ	SCHUETZ C125 24 V 50/60 HZ CONTACTEUR C125 24V 50HZ

El-komponenter / Electric components / Elektrische komponente / Composantes électrique

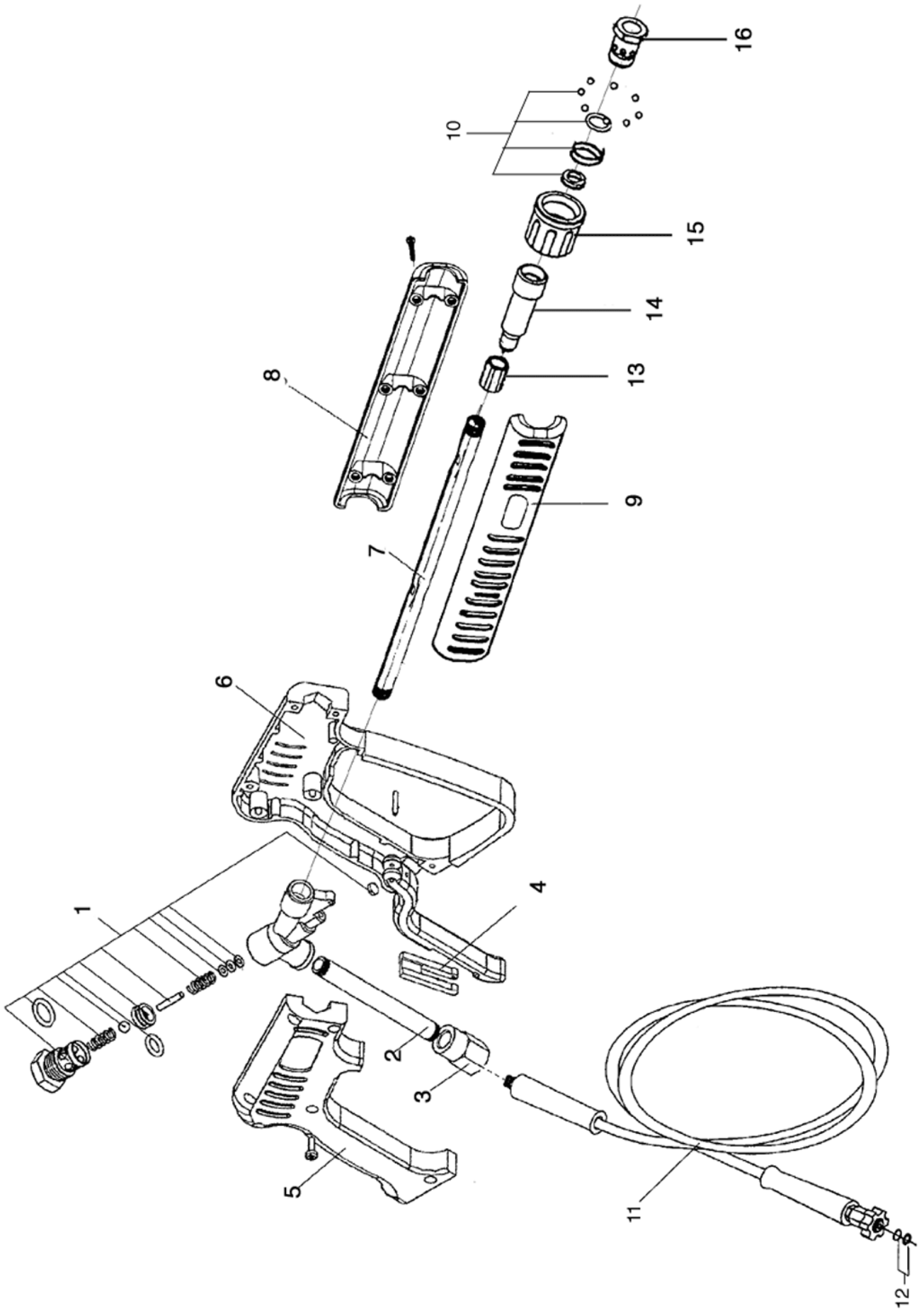
System 600

Pos.	Ref. no.	Beegnelse Description	Bezeichnung Description
45	06160977	KONTAKTOR, 400/415/440V CONTACTOR , 400/415/440V	SCHUETZ CONTACTEUR 380V
46	06160975	OMSKIFTER SWITCH	UMSCHALTER GRUEN INVERSEUR SYSTEME 600
47	06301619	TRANSFER "ADVARSEL" TRANSFERS "WARNING"	TRANSFERS WAHRNUNG G-880 AUTOCOL."AVERTISSEMENT"
48	06301705	TRANSFER "SYSTEM 6000" TRANSFER "SYSTEM 6000"	AUTOCOLLANT "SYSTEM 6000"
50	06261760	RELÆ FOR TRYKTRANSMITTER RELAY FOR PRESSURE TRANSMITTER	ANLASSKIT RELAIS DE MINIMUM DE
50A	06040182	HOLDEBØJLE HOLDER	HALTUNGSBUEGEL F. STROEMUNGSMODUL CROCHET DE FIXATIONDULE DDULE DE FLOW
51	06160822	FLADSTIKFORDELER, 6,3 MM G6000 FLAT PLUG DISTRIBUTOR, 6,3 MM G6000	FLACHSTECHERVERTEILER DISTRIBUTEUR DE PRISE DE COURANT
52	06070763	SKRUE, 3,5X6 SCREW 3.5X6,5	SCHRAUBE 3,5X6,5 VIS 3,5X6,5
53	06120566	PAKNING GASKET	JOINT
55	06200563	ELKASSE ELECTRIC BOX , 600SYS	BOITE ELECTRIQUE, 600SYS
56	06160117	KONTRAMØTRIK, M16 COUNTER NUT, M16	GEGENMUTTER CONTRE-ECROU
57	06160330	KABELFORSKRUNING, 11-16/11 SCREWED CABLE ENTRY, 11-16/11	KABELVERSCHRAUBUNG JOINT P. CABLE
58	06160112	KABELGENNEMFØRING CABLE GROMMET	KABELDURCHFUEHRUNG TRAVERSEE DE CABLE
59	06070883	SKRUE, 4,8X13 SCREW, 4,8X13	VIS, 4,8X13
60	06070866	SKRUE, 3,5X12 SCREW, 3,5X12	SCHRAUBE VIS POUR 230/250



Pistol 98 / Pistol 98 / Pistole 98 / Pistolet 98

Pos.	Ref. no.	Betegnelse Description	Bezeichnung Description	System 600
0	06290028	PISTOL ASTRA 320 3/8 PISTOL, 98	PISTOLE ASTRA 320 PISTOLET MRM320=290113	1
01	06261543	SERVICEKIT F. PISTOL MTM SERVICE KIT FOR PISTOL , MTM	KIT F. PISTOLE MTM KIT DE SERVICE P.PISTOLET	1
02	06050981	TILGANGSRØR INLET PIPE	EINLASSROHR F. PISTOL TUBE D'ENTREE PISTOLET	1
03	06290176	SWIRVEL KPL. SWIRVEL KPL.	SWIRVEL KPL. JOINT TOURNANT, CPL	1
04	06200384	SIKKERHEDSPAL SAFETY LOCK	SPERRVORRICHTUNG ARRET DE SURETE MTM	1
05	06200420	PISTOLKROP PISTOL HOUSING	PISTOLKÖRPER RECHTS CORPS DE PISTOLET	1
06	06200421	PISTOLKROP PISTOL HOUSING	PISTOLKÖRPER LINKS CORPS DE PISTOLET	1
07	06050980	FORRØR FOR PISTOL FRONT PIPE FOR PISTOL	VORDERROHR F. PISTOLE TUBE	1
08	06200423	KAPPE VENSTRE CAP LEFT	KAPPE FÜR FOHRROHR LINKS CARTER DE PISTOLET GAUCHE	1
09	06200422	KAPPE , HØJRE CAP, RIGHT	KAPPE FÜR VORROHR RECHTS CARTER DE PISTOLET DROIT	1
10	06261568	SKRUEKOBLING FOR PISTOL SCREW COUPLING FOR PISTOL	SCHRAUBENKUPPLUNG F. PISTOLE RACCORD ACCOUPLE PISTOLE	1
10A	06261547	PAKNINGSKIT F. SKRUEKOBL. GASKET KIT FOR SCREW COUPLING	SCHRAUBKUPPLUNG KIT P. JOINTS TORIQUES RACC.A.VIS	1
11	06110200	HØJTRYKSSLANG DN10X10M HIGH PRESSURE HOSE, 3/8"X3/8" NIPPLE, Ø10 MM 10 M	HOCHDRUCKSCHLAUCH FLEXIB.HP 10M/DIAMETRE 10	1
12	06260936	PAKNINGSKIT F. SKRUEKOB. GASKET KIT FOR SCREW COUPLING	DICHTUNGSKIT F. SCHRAUBENKUPPLUNG KIT JOINT RACCORD VIS	1

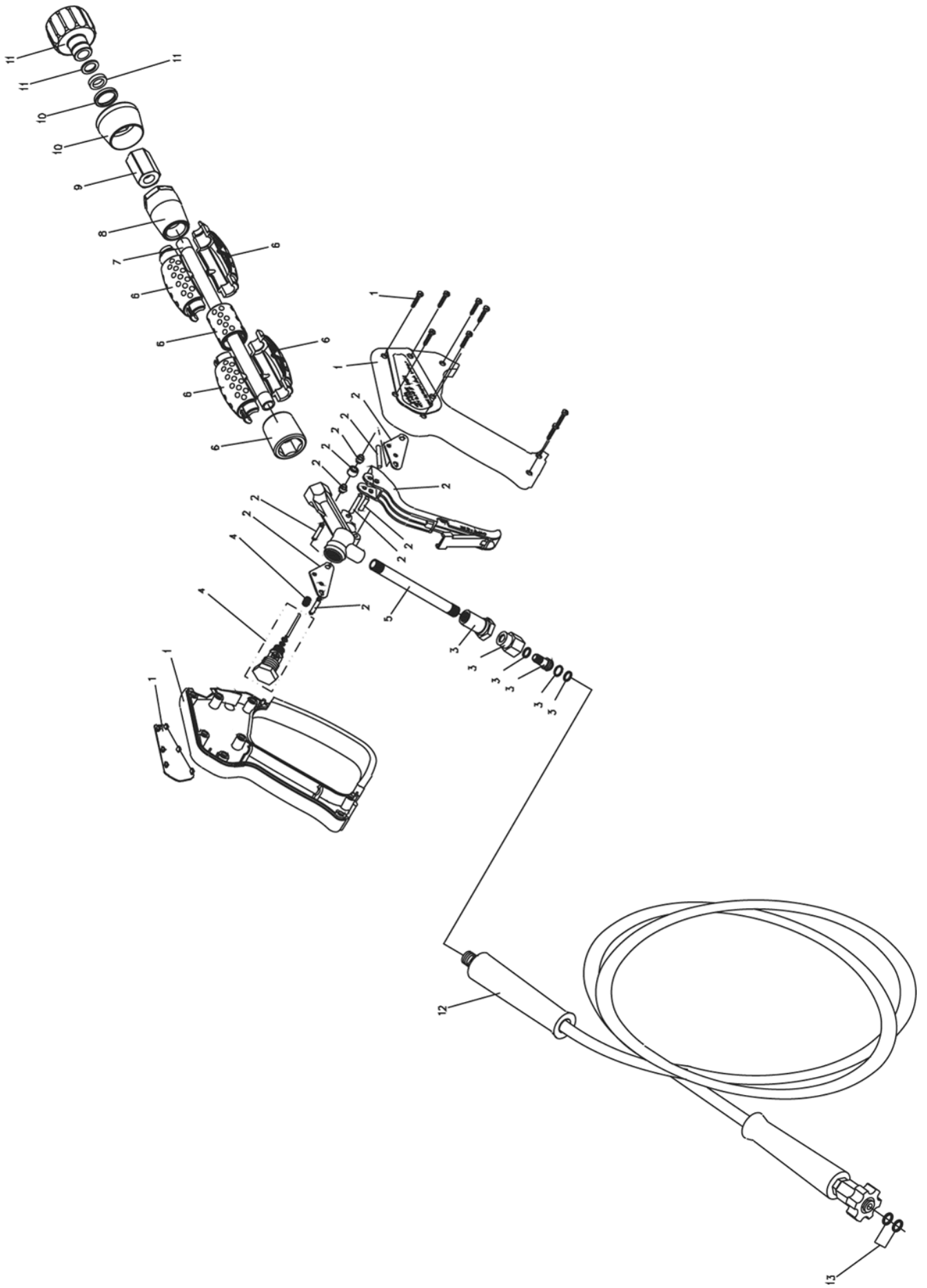


Pistol / Pistol / Pistole / Pistolet

System 600

Pos.	Ref. no.	Bezeichnung Description	Bezeichnung Description
0	06290080	PISTOL LANG M. QUICK PISTOL WITH QUICK COUPLING	PISTOLET 3/8 EME=290111
01	06261543	SERVICEKIT F. PISTOL MTM SERVICE KIT FOR PISTOL , MTM	KIT F. PISTOLE MTM KIT DE SERVICE P.PISTOLET
02	06050981	TILGANGSRØR INLET PIPE	EINLASSROHR F. PISTOL TUBE D'ENTREE PISTOLET
03	06290176	SWIRVEL KPL. SWIRVEL KPL.	SWIRVEL KPL. JOINT TOURNANT, CPL
04	06200384	SIKKERHEDSPAL SAFETY LOCK	SPERRVORRICHTUNG ARRÊT DE SURETE MTM
05	06200420	PISTOLKROP PISTOL HOUSING	PISTOLKÖRPER RECHTS CORPS DE PISTOLET
06	06200421	PISTOLKROP PISTOL HOUSING	PISTOLKÖRPER LINKS CORPS DE PISTOLET
07	06051045	FORRØR FOR PISTOL FRONT PIPE FOR PISTOL	TUBE AVANT PISTOLET290080
08	06200525	KAPPE CAP	CACHE TUBE PISTOLET290080
09	06200524	KAPPE CAP	CACHE TUBE PISTOLET290080
10	06262246	KIT FOR LYNKOBLING KIT FOR QUICK COUPLING	KIT JOINTS RACCORD RAPIDE
11	06110200	HØJTRYKSSLANGE DN10X10M HIGH PRESSURE HOSE, 3/8"X3/8" NIPPLE, Ø10 MM 10 M	HOCHDRUCKSCHLAUCH FLEXIB.HP 10M-DIAMETRE 10
12	06260936	PAKNINGSKIT F. SKRUEKOB. GASKET KIT FOR SCREW COUPLING	DICHTUNGSKIT F. SCHRAUBENKUPPLUNG KIT JOINT RACCORD VIS
13	06262287	MUFFE, 1/4"-1/4" SOCKET, 1/4"-1/4"	MANCHON P/PISTOLET 290080
14	06262286	KOBLING COUPLING	RACCORD VIS P/PISTOLET
15	06262284	OMLØBER COUPLING NUT	ECROU D/RACCORD P/PISTOLE
16	06262285	KOBLING COUPLING	RACCORD P/PISTOLET 290080

Pistol 2600 EGT / Pistol 2600 EGT / Pistole 2600 EGT / Pistolet 2600 EGT

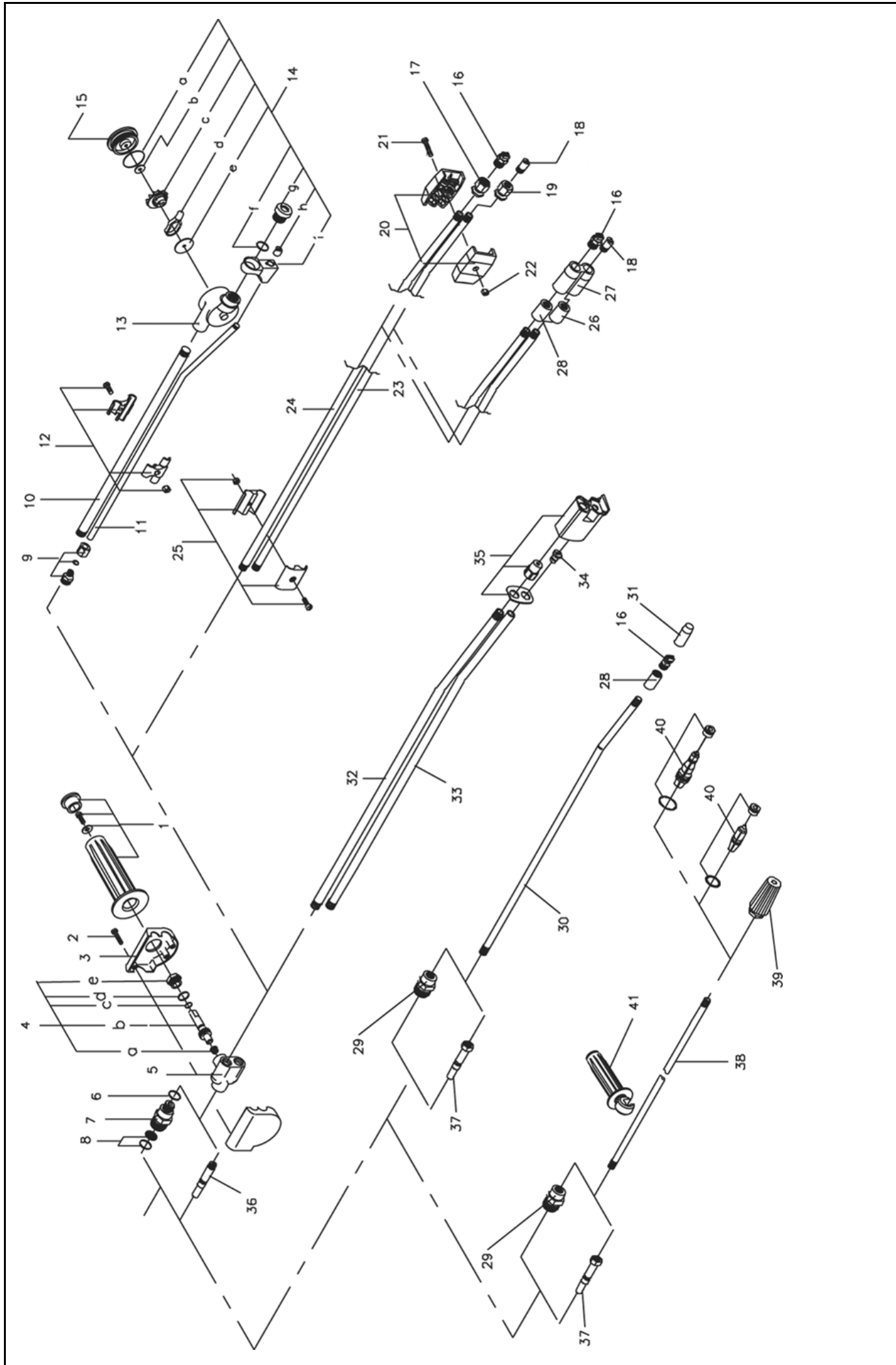


Pistol 2600 EGT / Pistol 2600 EGT / Pistole 2600 EGT / Pistol 2600 EGT

System 600

Pos.	Ref. no.	Betegnelse Description	Bezeichnung Description	
0	06290111	PISTOL - EGT 2600 - LANG MED SWIVEL, LYNKOBLING PISTOL - EGT 2600 - LONG W. SWIVEL, QUICK COUP.	PISTOLET EGT2600 RAC.RAPI	1
0	06290121	O-RINGSKIT FOR PISTOL O-RING KIT FOR PISTOL	JOINT A LEVRE .P/290111	1
01	06290119	PISTOLKROP KPL. PISTOL HOUSING CPL.	CORPS PISTOLET 290111	1
02	06290120	AFTRÆKKER KIT PULLER KIT	KIT DETENTE P/PIST.290111	1
03	06290122	DREJELED, KPL. SWIVEL, CPL.	JOINT TOURN.P/PIST.290111	1
04	06290123	VENTIL KPL. VALVE CPL.	VANNE P/PISTOLET 290111	1
05	06290124	TILGANGSRØR INLET PIPE	TUYAU D'ENTREE P/290111	1
06	06290125	KAPPEKIT CAP KIT	PROTECTION P/290111	1
07	06290126	FORRØR FOR PISTOL FRONT PIPE FOR PISTOL	TUBE AVANT P/PISTOL.290111	1
08	06290127	AFSTANDSSTYKKE DISTANCE PIECE	ENTRETOISE P/PISTOL290111	1
09	06290128	MUFFE SOCKET	MANCHON P/PISTOL 290111	1
10	06290129	AFSTANDSSTYKKE DISTANCE PIECE	ENTRETOISE P/PISTOL290111	1
11	06290130	LYNKOBLING KPL. QUICK COUPLING CPL.	RACCORD RAPID.PIST.290111	1
12	06110475	HØJTRYKSSLANGE DN8X10M HIGH PRESSURE HOSE, 3/8"X3/8" NIPPLE, Ø8 MM 10 M	HØCHDRUCKSCHLAUCH M. SCHRAUBENKUPPLUNGEN FLEXIBLE HP 10M AVEC R/V	1
13	06260936	PAKNINGSKIT F. SKRUEKOB. GASKET KIT FOR SCREW COUPLING	DICHTUNGSKIT F. SCHRAUBENKUPPLUNG KIT JOINT RACCORD VIS	1

Spulerør / Lances / Lanzen / Lance



Spulerør / Lances / Lanzen / Lance

Pos.	Ref. no.	Betegnelse Description	Bezeichnung Description	System600
01	06260232	HANDTAGSKIT F. SPULERØR HANDLE KIT	HANDGRIFFKIT F. DOPPELLANZE KIT REPAR.P/POIGNEE LANCE	1
02	06070479	SKRUE, 4X20 SCREW, 4X20	SCHNEIDSCHRAUBE, SCHWARZZINK VIS	3
03	06200097	PYNTEDÆKSEL F. VENTILHUS COVER F. VALVE HOUSING	STAUBKAPPE F. VENTILGEHAE COUVERCLEOR. D. VAN OR. D. VAN	1
04	06260860	VENTILSPINDEL KIT VALVE SPINDLE KIT	VENTILSPINDELKIT F. DRUCKREGELUNG KIT REGLAGE PRESSION DOUB	1
04C	06120006	O-RING, 6,75X1,78 O-RING, 6,75X1,78	O-RING JOINT TORIQUE MAT 4470	1
04D	06120010	O-RING, 13,1X1,6 O-RING, 13,1X1,6	O-RING JOINT TORIQUE MAT 4470	1
04E	06190245	MØTRIK NUT	MUTTER F. VENTIL ECROU POUR VANNE DOUB.LAN	1
05	06211078	VENTILHUS VALVE HOUSING	VENTILGEHAEUSE, KPL. CULASSE LANCE DOUBLE ET	1
06	06120188	O-RING, 10X2 O-RING, 10X2	O-RING JOINT TORIQUE	1
07	06030484	SKRUEKOBLING 1/4 UD.V. SCREW COUPLING ROTATABLE, 1/4"	SCHR.KUPPLUNG DREHBAR F.DOPPELLANZE ACCOUPL. VIS TOURNANT DBL LANCE DOUBLE	1
08	06100332	FILTER FOR TURBO LASER FILTER FOR TURBO LASER	FILTER F. TURBO LASER M. O-RING FILTRE TURBO LASER	1
08A	06120139	O-RING, 10X1 O-RING, 10X1	O-RING JOINT SPY JET	1
09	06030527	BRYSTNIPPEL, 8X1/4" BREAST NIPPLE, 8X1/4"	GEWINDESTUECK RACCORD	1
0A	06261108	TURBO-LASER 600 MM TURBO LASER W. PRES. REG. - SCREW - 600 MM, 6.5	TURBO LASER TURBO-LASER 600MM 600S/21	1
0A	06262066	TURBO-LASER 600MM QUICK TURBO LASER W. PRES. REG. - QUICK - 600 MM, 6.5	TURBO-LASER 600MM RAPIDE	1
0B	06260758	DOBBELT SPULERØR 600MM DOUBLE LANCE - PRES. REG.- SCREW -600 MM,	DOPPELLANZE DOUBLE LANCE 600MM	1
0B	06262063	DOBB. SPULERØR 600MM QUICK DOUBLE LANCE - PRES. REG.- QUICK -600 MM,	LANCE DOUBLE RAPIDE, 600M	1
0C	06260382	ENKELT SPULERØR 600 MM SINGLE LANCE - SCREW - 600 MM, EXCL.NOZ	EINZELLANZE LANCE SIMPLE 600 MM	1
0C	06262059	ENK.SPULERØR 600MM QUICK SINGLE LANCE - QUICK - 600 MM, EXCL.NOZ	LANCE SIMPLE RAPIDE, 600M	1
0D	06261957	SPECTRUM 600MM U/TRYKDYSE SPECTRUM W. PRES. REG. - SCREW - 600 MM,	SPECTRUM OHNE DÜSE - 600 MM SPECTRUM SANS GICLEUR - 600 MM	1
0D	06261991	SPECTRUM M/ TRYKREG. - SKRUE - 600 MM, 165 SPECTRUM W. PRES. REG. - SCREW - 650 MM, 165	SPECTRUM DÜSE LANCE SPECTRUM 660-600P	1
0D	06262094	SPECTRUM M/ TRYKREG. - LYN - 600 MM, 165 SPECTRUM W. PRES. REG. - QUICK - 600 MM, 165	LANCE SPECTRUM 600/46.5 R	1

Spulerør / Lances / Lanzen / Lance

Pos.	Ref. no.	Betegnelse Description	Bezeichnung Description	System 600
0D	06262253	SPECTRUM 600 U.DYSE QUICK SPECTRUM W. PRES. REG. - QUICK - 600 MM,	LANCE SPECTRUM R.R-S/GICL	1
0E	06262117	ROTO JET LANCE 070 ROTO JET - SCREW - 600 MM, 7.0	LANCE ROTO JET 070	1
0E	06262128	ROTO JET W/ LYN - 600 MM, 7.0 ROTO JET - QUICK - 600 MM, 7.0	LANCE ROTO JET RAPIDE 070	1
10	06050841	SPULERØR LIGE, Ø13X1,5X586 LANCE STRAIGHT, Ø13X1,5X586	LANCE GERADE TURBO LASER LANCE DROITE TURBO LASER	1
11	06050842	KEMIRØR 15 GR. BUK , Ø8X1X622 DETERGENT PIPE 15 DEG., Ø8X1X622	REI.MITTLERØHR 15 GR. VERB. F. T. L. TUYAU POUR LANCESER, 15 DSER, 15 DEGRES	1
12	06261130	BESLAG FOR TURBO LASER FITTINGS FOR TURBO LASER	BESCHLAG F. TURBO LASER ROHR ARMATURE POUR TURBO LASER TUYAU	1
13	06261288	TURBO LASER HUS , Ø3,6 MIN 720 L TURBO LASER HOUSING, Ø3,6 MIN 720 L	GEHAUSE F. TURBO LASER CORPS P.TURBO LASER 3.6	1
14	06261111	TURBO LASER KIT, 5.0 TURBO LASER KIT, 5.0	SERVICEKIT F. TURBO LASER KIT REP. TURBO LASER G 11 LASER	1
14A	06120544	O-RING, 36.0X1,78 O-RING, 36.0X1,78	JOINT TORIQUE	1
14F	06120282	O-RING, 14X1,78 O-RING, 14X1,78	O-RING JOINT TORIQUE 14 X 1,78	1
14H	06180533	DYSE, Ø10X12 NOZZLE, Ø10X12	DUESE GICLEUR DIA. 10X12	1
15	06180936	LÅG FOR TURBO LASER COVER FOR TURBO LASER	DECKEL F. TURBO LASER, BEARBEITET COUVER.P.TURBO LASER	1
16	06090211	DYSE HÆRDET 1/4-1506,5 FLAT JET NOZZLE 15°, 6,5	FLACHSTRAHLDUESE 15° GICLEUR DURCI 1/4MEG15065	1
17	06180780	DYSEHOLDER, 17X20 NOZZLE HOLDER, 17X20	DUESENHALTER F/HOCHDRUCKDUESE SUPPORT DE GICLEUR H.P.EUEUR H.P.	1
18	06180779	KEMIDYSE, Ø10X22 DETERGENT NOZZLE, Ø10X22	REINIGUNGSMITTELDUESE GICLEUR DETERGENT	1
19	06180781	DYSEHOLDER FOR KEMI, 17X20 NOZZLE HOLDER FOR DETERGENTS, 17X20	DUESENHALTER F/REINIGUNGSMITTEL SUPPORT DE GICLEUR DETERGENT	1
20	06200226	DYSEBESKYTTER NOZZLE PROTECTION, PLASTIC	DUESENSCHUTZ KUNSTSTOFF PROTECTION GICLEUR PLASTI PLASTIQUE	2
21	06070497	SKRUE, 5X22 SCREW, 5X22	SCHRAUBE, ROSTFREI, Z/K VIS C/H INOX	1
22	06080123	MØTRIK, M5 NUT, M5	MUTTER, ROSTFREI RONDELLE	1
23	06050941	KEMI-RØR, RUSTFRI, Ø13X1,5X591 DETERGENT PIPE, STAINLESS, Ø13X1,5X591	DOPPELLANZE TUBE DE LANCE BP	1
24	06050940	SPULERØR, RUSTFRI, Ø13X1,5X596 LANCE, STAINLESS, Ø13X1,5X596	DOPPELLANZE TUBE DE LANCE HP	1
25	06260537	BESLAG F. DOBB. SPULERØR FITTINGS FOR DOUBLE LANCE	BESCHLAG F/DOPPELLANZE TURBO ENTRETOISE LANCE TURBOE TE TURBO	1

Spulerør / Lances / Lanzen / Lance

Pos.	Ref. no.	Betegnelse Description	Bezeichnung Description	System 600
26	06181232	DYSEHOLDER FOR KEMI, Ø18X26 NOZZLE HOLDER FOR DETERGENTS, Ø18X26	DUESEHALTER F. REINIGUNGSMITTELDUESE SUPPORT GICLEUR POUR DETER DE DETERGENT	1
27	06200374	DYSESKYTTER DOBBELT NOZZLE PROTECTION, PLASTIC, DOBBLE	DUESESCHUTZ - DOBBELT PROTECT.PLAST.GICLEUR LAN	1
28	06030643	MUFFE FOR SPULERØR, Ø10 SOCKET FOR LANCE, Ø10	MUFFE F. LANZE MANCHON POUR LANCE INOX	1
28	06181233	DYSEHOLDER , Ø18X26 NOZZLE HOLDER , Ø18X26	DUESEHALTER F. HOCHDRUCKSDUESE SUPPORT GICLEUR HAUTE PRE	1
29	06030485	SKRUEKOBLING, 1/4" INDV. SCREW COUPLING, 1/4"	SCHRAUBENKUPPLUNG, NICHT DREHBAR ACCOUPL. VIS 1/4 INT.NT NT	1
30	06050116	SPULERØR, RUSTFRI, Ø13X586 LANCE, STAINLESS, Ø13X586	LANZE, ROSTFREI LANCE INOX DIAM. 13X586	1
31	06200375	DYSESKYTTER ENKELT NOZZLE PROTECTION, PLASTIC, SINGLE	DUESESCHUTZ PROTECT.PLAST.GICLEUR LAN	1
35	06261969	SPECTRUM KIT, 165 SPECTRUM KIT, 165	SPECTRUM KIT KIT SPECTRUM 660/600P	1
36	06030649	LYNKOBLING 1/4 UDV. QUICK COUPLING, 1/4"	SCHNELLKUPPLUNG RACCORD RAPIDE	1
37	06030827	NIPPEL QUICK-1/4" INDV. NIPPLE, 1/4"	RACCORD RAPIDE 1/4" INTER	1
38	06050841	SPULERØR LIGE, Ø13X1,5X586 LANCE STRAIGHT, Ø13X1,5X586	LANZE GERADE TURBO LASER LANCE DROITE TURBO LASER	1
39	06262139	ROTO JET DYSE KPL., 7.0 ROTO JET NOZZLE CPL., 7.0	GICLEUR ROTO CPL. 7.0	1
40	06262226	ROTO DYSE KIT 070 ROTO JET NOZZLE KIT, 7.0	KIT POUR GICLEUR ROTO 070	1
41	06260365	HANDGREB TIL ROT. BØRSTER OG ENKELT LANSERØR, HANDLE FOR ROTATING BRUSHES AND SINGLE	HANDGRIFF POIGNEE DE MAINTIEN LANCE	1