

# GU 305-355-455-DUAL

---

Model:  
GU 305  
GU 355  
GU 355-DUAL  
GU 455-DUAL



Stückliste Deutsch

31-03-2015

# Inhalt

GU 305-355-455-DUAL

<b>Body</b>	<b>3</b>
<b>Standard</b>	<b>5</b>
<b>FILTER</b>	<b>7</b>
<b>Nozzles and tube</b>	<b>9</b>
<b>EMPFOHLENE ERSATZTEILE</b>	<b>11</b>

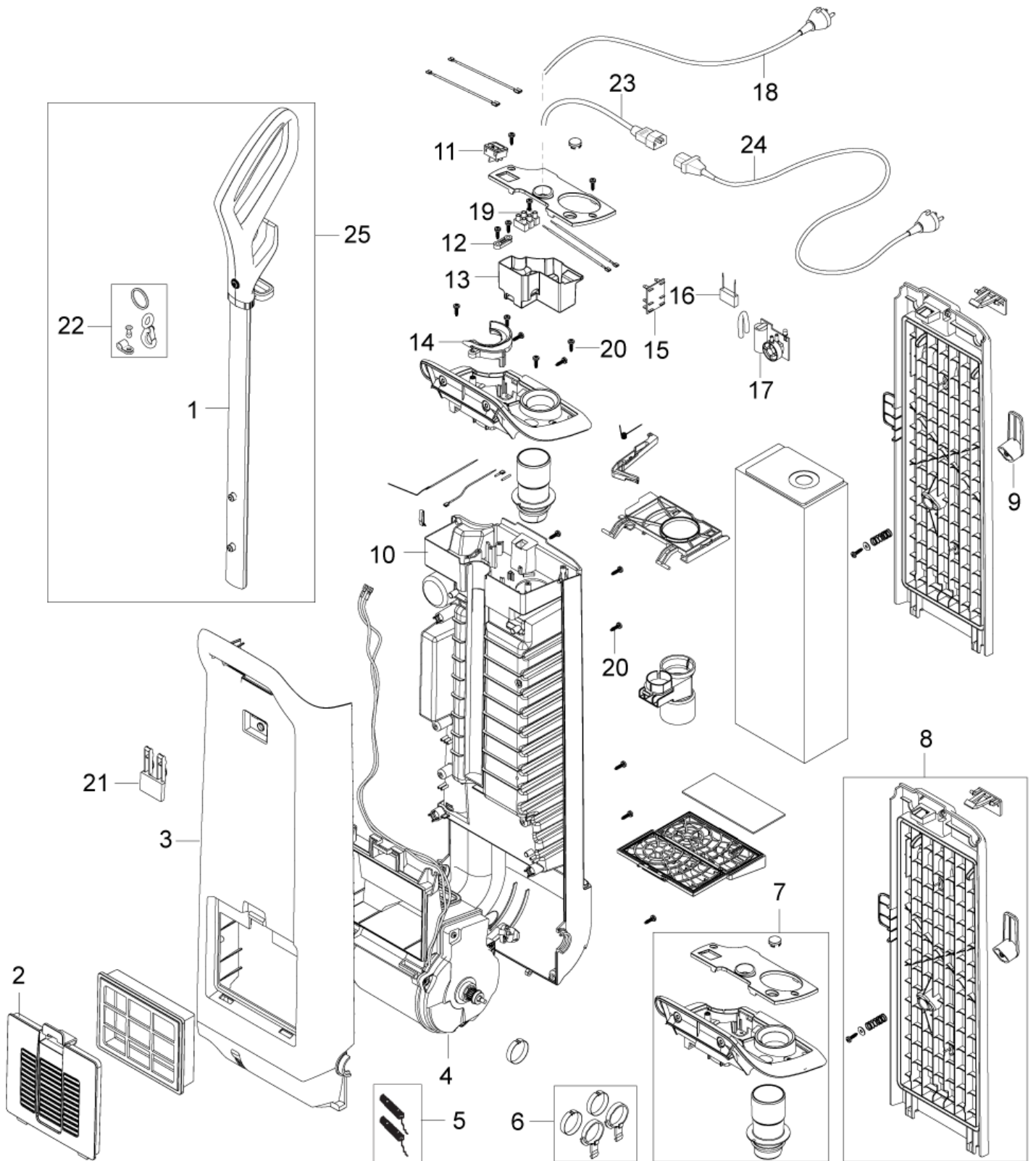
# Body

GU 305-355-455-DUAL

31-03-2015

ET-Liste-Nr. GU30508

3



# Body

GU 305-355-455-DUAL

31-03-2015

ET-Liste-Nr. GU30508

4

Pos	Artikelnr.	Me	Beschreibung
0	147 0976 000	1	BOX 15 SMU
0	147 0982 000	1	BOX 18 DUM
1	147 0833 500	1	Handle komplett
2	147 0965 500	1	Filterdeckel
2	147 0965 510	1	COVER EXHAUST FILTER.BLUE
3	147 0847 500	1	COVER BODY FRONT. GREY
3	147 0847 510	1	COVER BODY FRONT. BLUE
4	147 0864 500	1	Motorkassette 220-240V
4	147 0864 510	1	MOTOR CASSETTE 110-120V
4	147 0864 520	1	VACUUM MOTOR CASSETTE 100V
5	147 1326 500	1	CARBON BRUSH KIT
6	147 0927 500	1	Dichtungsringe
7	147 0842 500	1	COVER TOP KIT. GREY
7	147 0842 510	1	COVER TOP KIT. BLUE
8	147 0857 500	1	Abdeckung zu GU 355
8	147 0857 510	1	LID CPL. BLUE
9	147 0852 500	1	Kabelhalter
10	147 0850 500	1	COVER BODY REAR GREY
10	147 0850 510	1	COVER BODY REAR BLUE
11	140 5496 510	1	Schalter UL KIT
12	056 1014 060	1	Trippler/Anti-Strain Clip
13	147 0843 500	1	ELECTRIC BOX
14	147 1062 500	1	Ring Schlauchhalterung zu GU
15	140 7024 500	1	Schaltkarte GD 930
16	140 8166 010	1	Kondensator GD 930
17	147 0987 500	1	Tütenfüllstandsanzeige
18	12003801	1	Kabel 15 mtr. f.GD1000/GU
18	12003802	1	CORD SET UK CPL. L 15M
18	12003803	1	CORD SET AU/NZ CPL. L 15M
18	12003805	1	CORD SET JP CPL. L 15M
18	140 3859 640	1	CORD SET US/TW 15M YELLOW
18	147 0504 510	1	CORD SET CN 15M
19	82240100	1	TERMINAL BLOCK UL MATERIAL
20	140 9214 040	22	Schraube 40x14
21	107401794	1	MUSTANG BUTTON BLACK

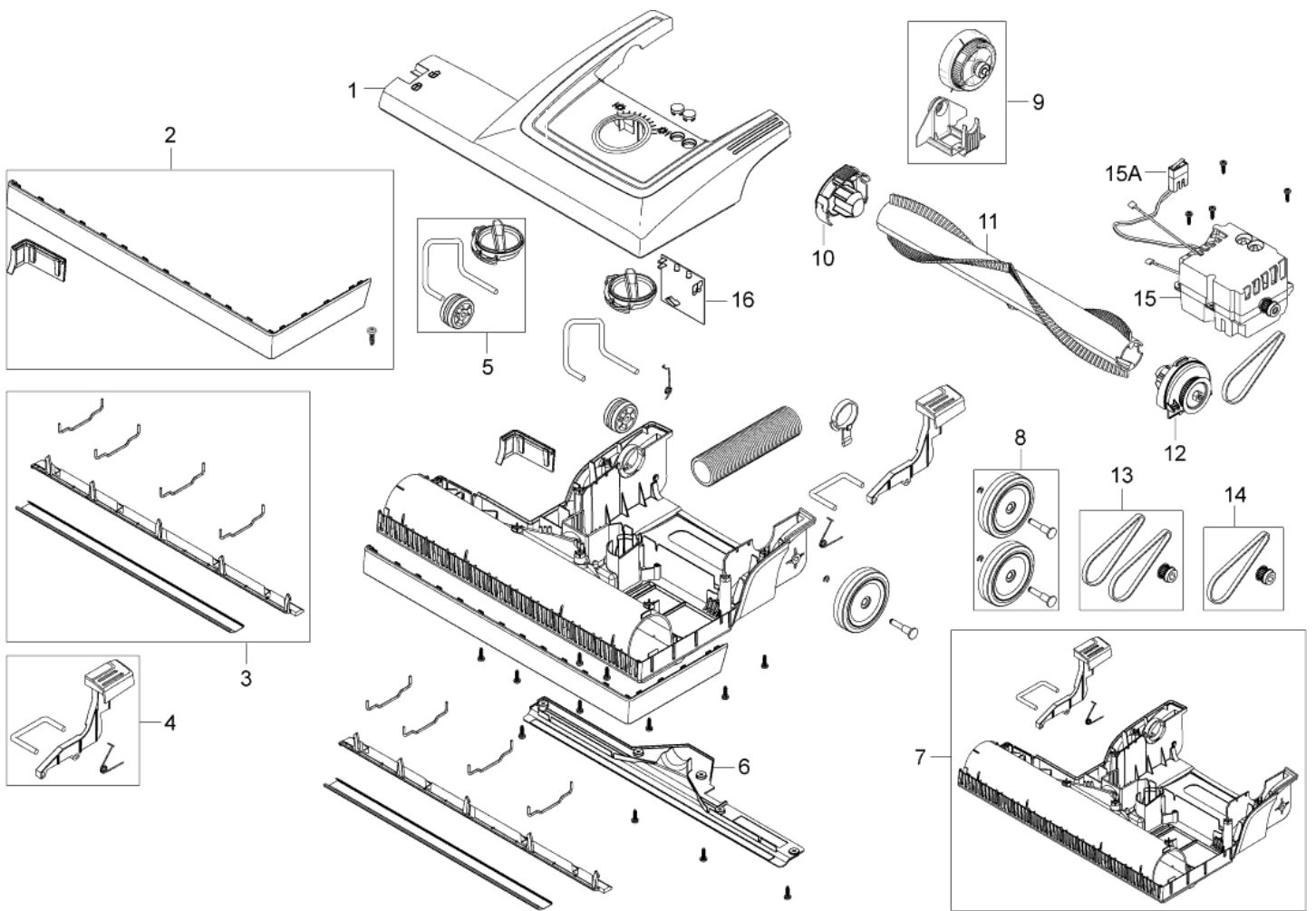
# Standard

GU 305-355-455-DUAL

31-03-2015

ET-Liste-Nr. GU30504

5



# Standard

GU 305-355-455-DUAL

31-03-2015

ET-Liste-Nr. GU30504

6

Pos	Artikelnr.	Me	Beschreibung	
1	147 0924 500	1	COVER BRUSH HOUSE. GREY	305
1	147 0924 510	1	COVER BRUSH HOUSE. BLUE	12"/305
1	147 0924 600	1	COVER BRUSH HOUSE. GREY	305 incl. lens
1	147 0924 610	1	COVER BRUSH HOUSE. BLUE	12"/305 incl. lens
1	147 0925 500	1	COVER BRUSH HOUSE.GREY	355
1	147 0925 510	1	COVER BRUSH HOUSE.BLUE	15"/355
1	147 0925 610	1	COVER BRUSH HOUSE. BLUE	15"/355 incl. lens
1	147 0926 500	1	Gehäuse	455
1	147 0926 510	1	COVER BRUSH HOUSE BLUE	18"/455
2	147 0886 500	1	Stoßleiste	
2	147 0889 500	1	Abweis Kit 15 Inch GU 355	
2	147 0892 500	1	"Abweiskit 18""	
3	147 0992 500	1	SUPPORT BRUSH KIT 12INCH	12"/305
3	147 0992 510	1	"Halter Bürsten Kit 15 ""	15"/355
3	147 0992 520	1	Befestigungskit	18"/455
4	147 0935 500	1	Fußhebel	
5	147 0901 500	1	Abstandsrollen Kit	
6	147 0988 500	1	BRUSH SHOE 12 INCH/305	
6	147 0989 500	1	Bürstenschuh	
6	147 0990 500	1	Bodenplatte	
7	147 0885 500	1	CHASSIS 12 INCH /305	
7	147 0888 500	1	Unterteil f. GU 355	
7	147 0891 500	1	Bürstengehäuse	
8	147 0898 500	1	Rad Kit GU 355 Dual	
9	147 0906 500	1	Kupplungs und Lager KitGU 355 Dual	
10	147 0944 500	1	COVER	
11	147 0930 500	1	Bürste 12/305	
11	147 0930 510	1	"Bürste 15"" GU 355"	
11	147 0930 520	1	"Bürste 15"" zu GU 455"	
12	147 0913 500	1	Kugellager GU 355 Dual	
13	147 0905 500	1	Riemenantrieb GU 355 DUAL	
14	147 0905 510	1	Riemen-Kit	
15	147 0984 500	1	Motor Kassette 220-240 V	
15	147 0984 510	1	MOTOR CASSETTE 100-120V	
16	107401946	1	Leiterplatte 230V	
16	107401947	1	PCB 120V KIT	

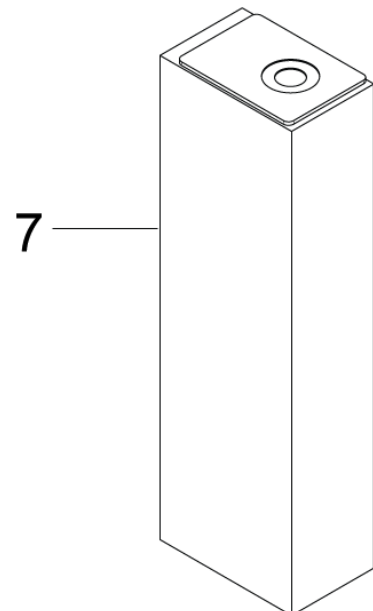
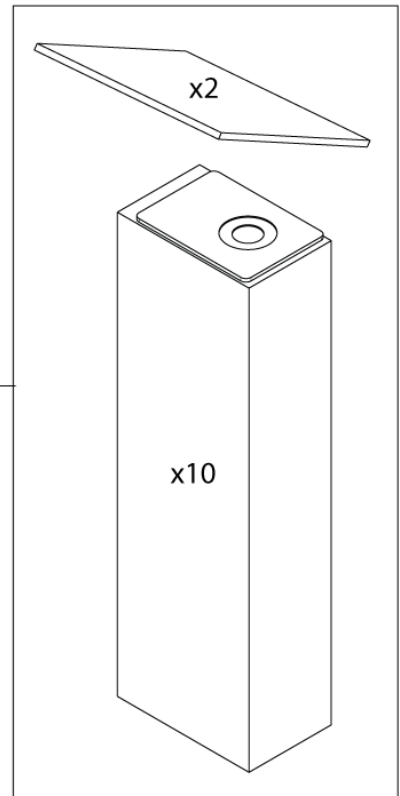
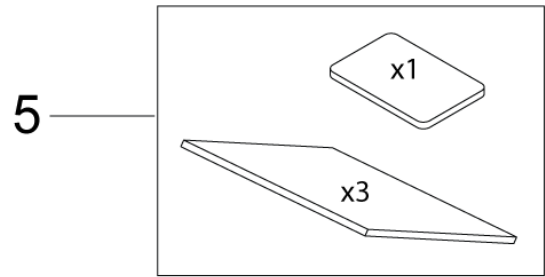
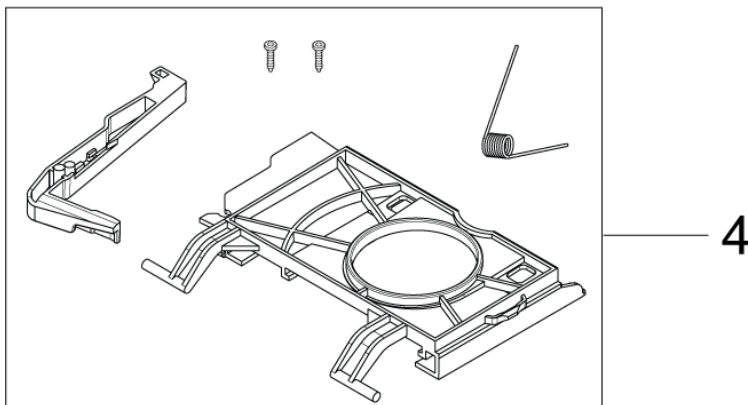
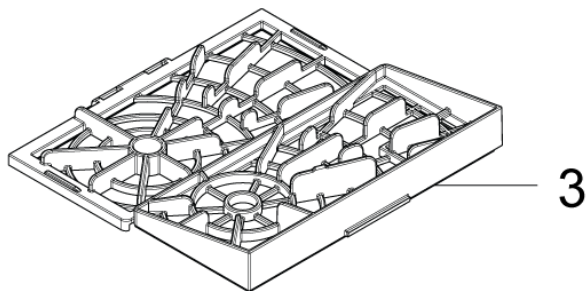
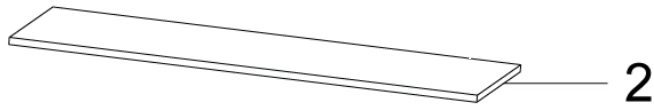
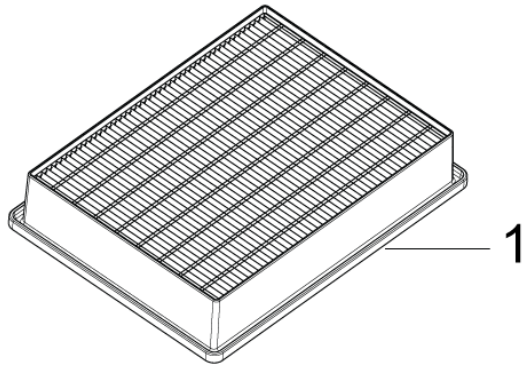
# FILTER

GU 305-355-455-DUAL

31-03-2015

ET-Liste-Nr. B10939

7



# FILTER

GU 305-355-455-DUAL

31-03-2015

ET-Liste-Nr. B10939

8

Pos	Artikelnr.	Me	Beschreibung
1	147 1250 600	1	Hepa Filter GU 355 DUALH 13
2	147 0966 500	1	Abluftfilter GU 355 Dual
3	147 0958 500	1	Filterhalter with 1 Prefilter
4	147 0854 500	1	Papiertütenhalter
5	147 0960 500	1	Vorfilter KitGU 355 / 455 with 1 fragrance chip and 3 Prefilters
6	107413584	1	DUST BAG 10PCS FOR GU SERIE with 10 bags and 2 Prefilters
7	147 1059 500	1	DUST BAG REUSEABLE



# Nozzles and tube

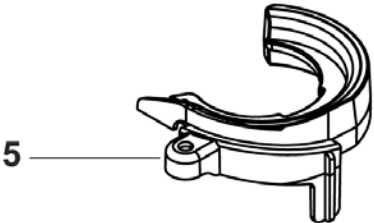
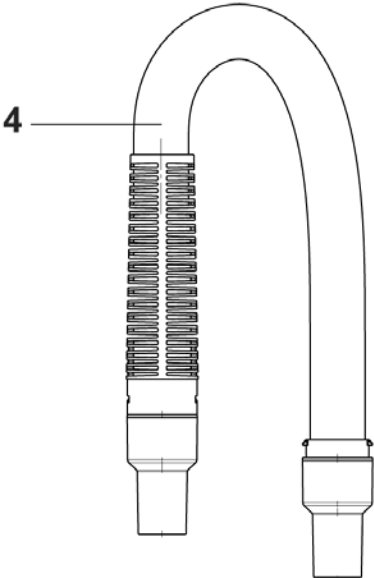
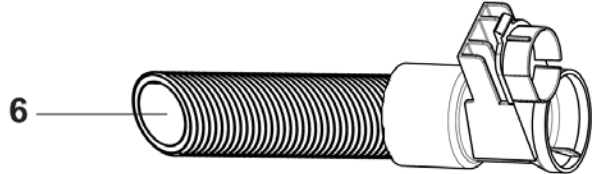
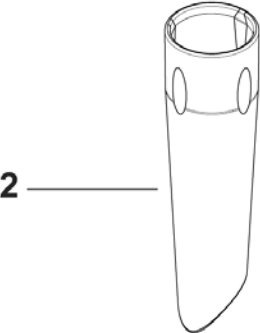
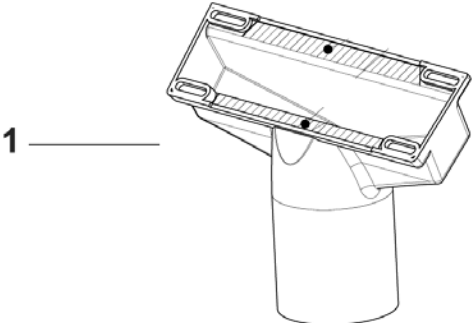
GU 305-355-455-DUAL

31-03-2015

ET-Liste-Nr.

B109311

9



# Nozzles and tube

GU 305-355-455-DUAL

31-03-2015

ET-Liste-Nr. B109311

10

Pos	Artikelnr.	Me	Beschreibung
1	147 1205 500	1	Polsterdüse
2	147 1203 500	1	Fugendüse 35mm
3	147 0851 500	1	Verlängerungsrohr 35mm
4	147 0950 500	1	Saugschlauch GU355/455
5	147 1062 500	1	Ring Schlauchhalterung zu GU
6	147 0919 500	1	Adapter

# EMPFOHLENE ERSATZTEILE

GU 305-355-455-DUAL

31-03-2015

ET-Liste-Nr. B109313

11

Keine Zeichnung zur ET-Liste

# EMPFOHLENE ERSATZTEILE

GU 305-355-455-DUAL

31-03-2015

ET-Liste-Nr. B109313

12

Pos	Artikelnr.	Me	Beschreibung
0	107401946	1	Leiterplatte 230V
0	107401947	1	PCB 120V KIT
0	12003801	1	Kabel 15 mtr. f. GD1000/GU
0	12003802	1	CORD SET UK CPL. L 15M
0	12003803	1	CORD SET AU/NZ CPL. L 15M
0	12003805	1	CORD SET JP CPL. L 15M
0	140 3859 640	1	CORD SET US/TW 15M YELLOW
0	140 5496 510	1	Schalter UL KIT
0	140 7024 500	1	Schaltkarte GD 930
0	140 8166 010	1	Kondensator GD 930
0	147 0504 510	1	CORD SET CN 15M
0	147 0833 500	1	Handle komplett
0	147 0864 500	1	Motorkassette 220-240V
0	147 0864 510	1	MOTOR CASSETTE 110-120V
0	147 0864 520	1	VACUUM MOTOR CASSETTE 100V
0	147 0898 500	1	Rad Kit GU 355 Dual
0	147 0905 500	1	Riemenantrieb GU 355 DUAL
0	147 0905 510	1	Riemen-Kit
0	147 0913 500	1	Kugellager GU 355 Dual
0	147 0930 500	1	Bürste 12/305
0	147 0930 510	1	"Bürste 15"" GU 355"
0	147 0930 520	1	"Bürste 15"" zu GU 455"
0	147 0935 500	1	Fußhebel
0	147 0944 500	1	COVER
0	147 0960 500	1	Vorfilter KitGU 355 / 455
0	147 0966 500	1	Abluftfilter GU 355 Dual
0	147 0984 500	1	Motor Kassette 220-240 V
0	147 0984 510	1	MOTOR CASSETTE 100-120V
0	147 0987 500	1	Tütenfüllstandsanzeige
0	147 0992 500	1	SUPPORT BRUSH KIT 12INCH
0	147 0992 510	1	"Halter Bürsten Kit 15 ""
0	147 0992 520	1	Befestigungskit