

BA451/BA451D/BA531/BA 531D

Model:

BA 451 D NIL

BA 451 NIL

BA 531 D NIL

BA 531 NIL



Stückliste Deutsch

31-03-2015

Inhalt

BA451/BA451D/BA531/BA 531D

Frischwassertank	3
SCHMUTZWASSERTANK	5
Chassis-System	7
Wheels and traction	9
Handle assembly - BA 451 D - 531 D	11
FRISCHWASSERSYSTEM	13
ABSAUGERSYSTEM	15
Brush system - BA 451 - BA 531	17
Brush system - BA 451 D - BA 531 D	19
Zubehör Bürsten	21
Control panel system - BA 451 - 531	23
Control panel system - BA 451 D - 531 D	25
Electrical components - BA 451 - 531	27
Electrical components - BA 451 D - 531 D	29
Accessories Extra pressure-Splash guards	31
Accessories Battery Charger	33
Accessories Ecoflex system	35
Wiring diagram - BA 451 - 531	37
Wiring diagram - BA 451 D - 531 D	39
Recommended spare parts 1	41
Recommended spare parts 2	43
Optionals	45
Wiring diagram - BA 451 D - 531 D REV.C	48

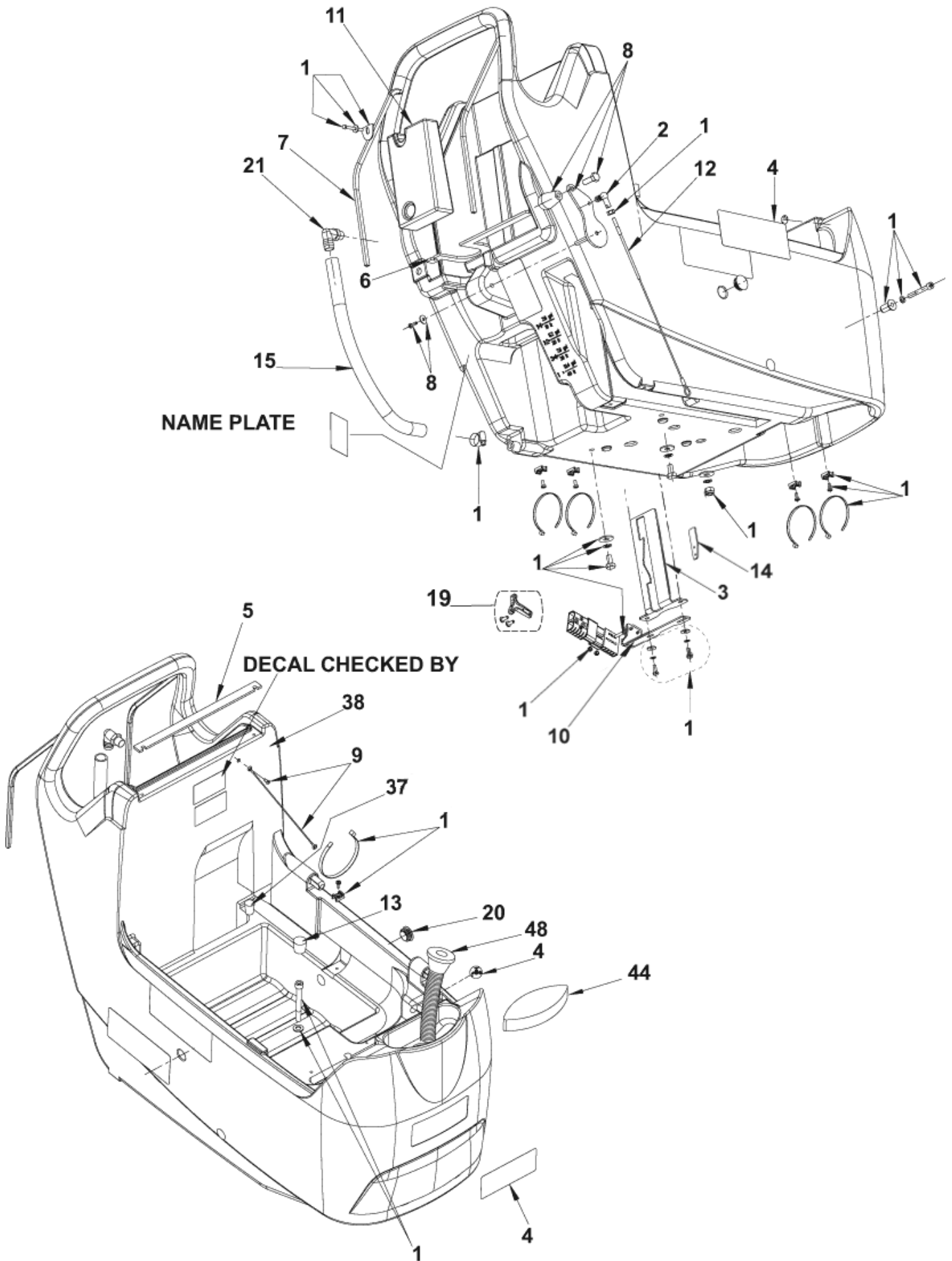
Frischwassertank

BA451/BA451D/BA531/BA 531D

31-03-2015

ET-Liste-Nr. E18315

3



Frischwassertank

BA451/BA451D/BA531/BA 531D

31-03-2015

ET-Liste-Nr. E18315

4

Pos	Artikelnr.	Me	Beschreibung	
1	9098265000	1	HARDWARE SOLUTION TANK KIT	
3	909 6550 000	1	Anbauplatte	
4	9097771000	1	Aufkleber BA 451	
5	909 6596 000	1	Dichtring	
6	909 6597 000	1	Dichtring	
7	909 6892 000	2	Dichtring L960	
8	9097630000	1	Hebel Saugfussanhebung zu BA 451	
9	909 6874 000	1	CABLE TANK KIT	
10	909 6649 000	1	Klammer	
11	909 6841 000	1	Gewicht	
12	9098673000	1	CABLE SQUEEGEE KIT	TSB IT 2010-053 - INST. INSTR. 9098672000
13	909 6673 000	1	Kappe, schwarz	
14	9096999000	1	Pedalbelag	ONLY FOR BA 531 D J
15	909 6681 000	1	Frischwasserschlauch BA 451	
19	1464116000	1	Handgriff	
20	L08812457	2	CAP, TANK LOCKING	
21	9100000771	1	FITTING 90. M 3/8-18 NPT HOSE D.19 PKD	
37	909 6236 000	1	Abdeckung, schwarz	
38	909 6320 000	1	Frischwassertank BA 531D	
44	909 6650 000	1	Schwamm Frischwassertank BA 531	
48	9097290000	1	HOSE FILLING	OPTION

POSITION 12 9098673000 includes also position 2.

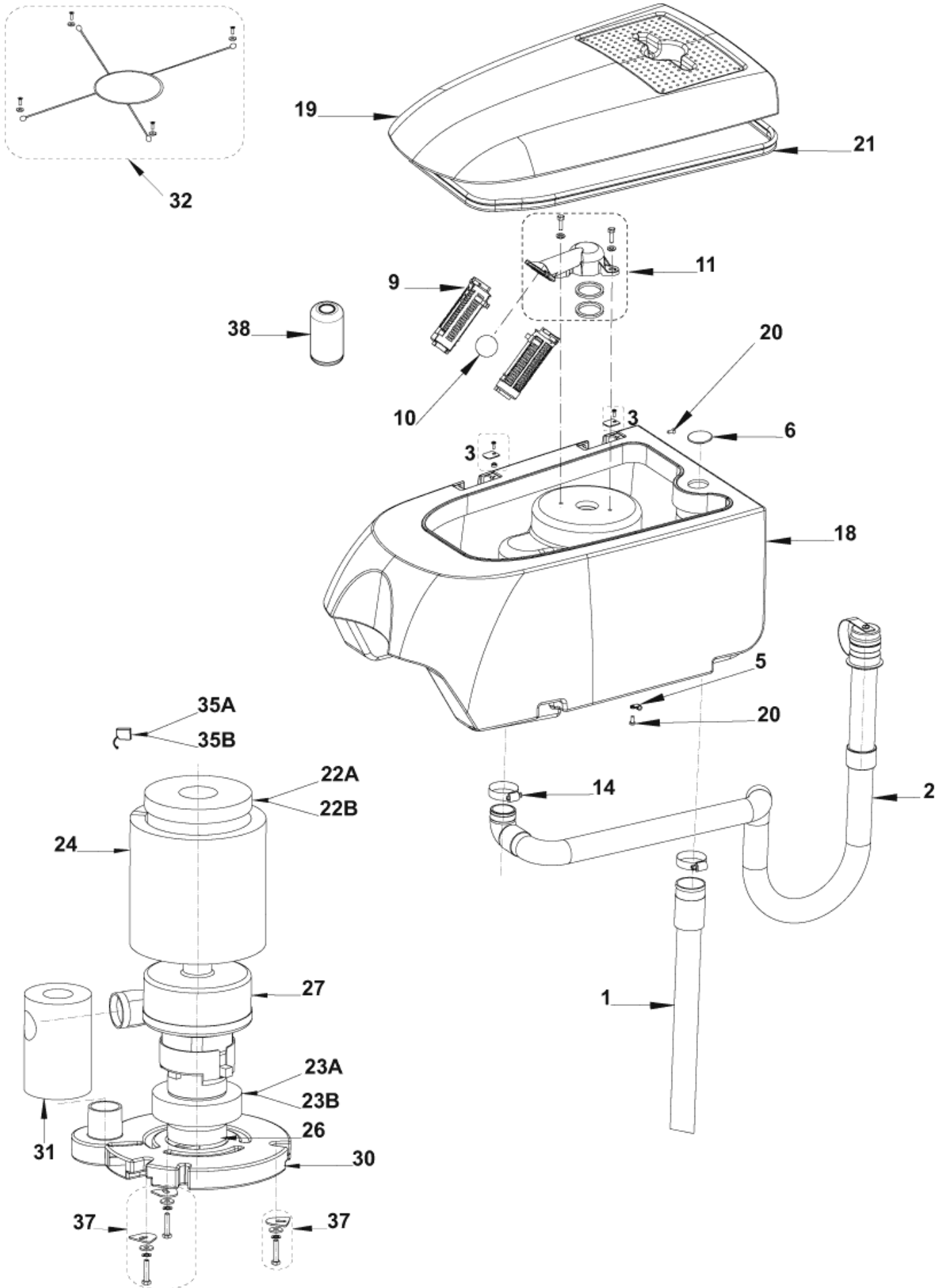
SCHMUTZWASSERTANK

BA451/BA451D/BA531/BA 531D

31-03-2015

ET-Liste-Nr. E18319

5



SCHMUTZWASSERTANK

BA451/BA451D/BA531/BA 531D

31-03-2015

ET-Liste-Nr. E18319

6

Pos	Artikelnr.	Me	Beschreibung	
0	909 6876 000	1	BefestigungsKit	FOR OLD CAGE SUPPORT
0	9098853000	1	Winkel 90 Grad	OPTIONAL
1	9099852000	1	Saugschlauch Kit	
2	9099165000	1	Ablaufschlauch RAL 7001	
3	9097654000	1	Tankdeckelkit	
5	L08603845	1	Kabelklemme	
9	L08812259	2	CAGE,FLOAT CP	
10	L08812373	1	BALL FLOATING	
11	9097681000	1	Schwimmerkorb-Kit	TSB IT 2008-009 - INST.INSTR.9097680000
14	145 0543 000	2	CLAMP 14/32-52	
18	909 6321 000	1	TANK RECOVERY 35 LT	
19	909 6322 000	1	COVER.TANK 35 LT	
20	909 6337 000	2	Schraube M5 x 12	
21	909 6901 000	1	Dichtung L 1640	
24	909 6491 000	1	PANEL,ACOUSTIC INSULATION	
26	909 6672 000	1	FILTER	
27	9099401000	1	MOTOR VACUUM KIT	
30	909 6051 000	1	Abdeckhaube f. Motor	
31	909 6442 000	1	PIPE,ACOUSTIC INSULATION	
32	909 6734 000	1	Haltenetz	OPTIONAL
37	909 6877 000	1	Motor BefestigungsKit	
38	909 5065 000	1	FILTER ANTIFOAMING	TSB IT 2008-002 - OPTIONAL
22A	9096918000	1	Dichtung f. Motor	
22B	9098057000	1	Dichtung f. Vacuummotor	
23A	909 6490 000	1	GASKET VACUUM MOTOR	
23B	9097555000	1	Dichtung	
35A	909 5371 000	2	CARBON BRUSH	
35B	9098231000	1	Kohlebürstensatz 2Stck.	

A: FOR MOTOR 9099401000 (AMETEK)

B: FOR MOTOR 9098062000 (VIPER)

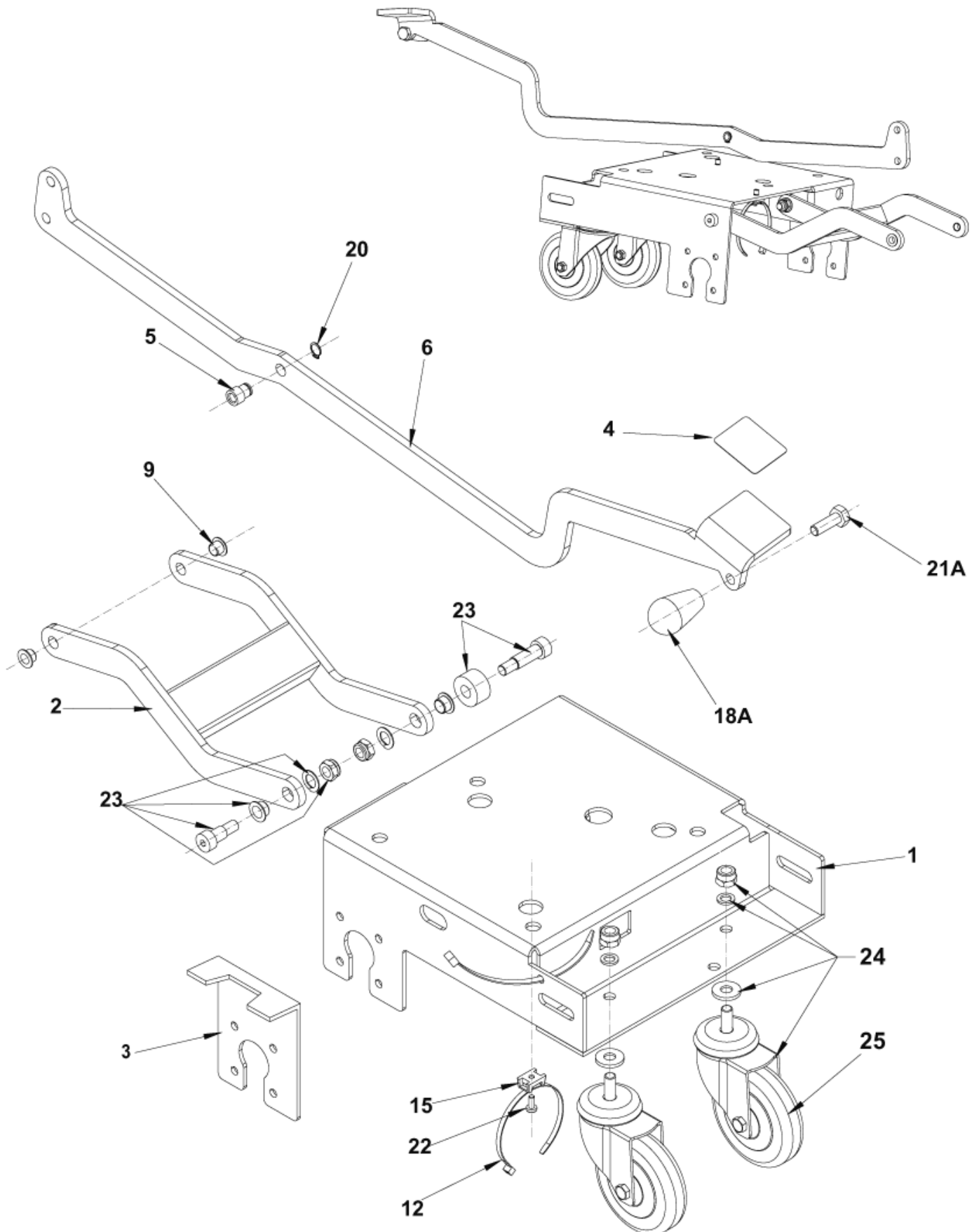
Chassis-System

BA451/BA451D/BA531/BA 531D

31-03-2015

ET-Liste-Nr. E183111

7



Chassis-System

BA451/BA451D/BA531/BA 531D

31-03-2015

ET-Liste-Nr. E183111

8

Pos	Artikelnr.	Me	Beschreibung	
0	9100000335	1	STRAP ANTISTATIC KIT	OPT INST.INSTR.9100000337
1	909 6482 000	1	Chassis	
2	909 6486 000	1	Hebel	
3	9098587000	1	Halter f. Wassertankkit L	INST.INSTR.9098588000 ONLY FOR DRIVE VERSIONS
4	909 6539 000	1	Antirutsch-Belag	
5	909 6540 000	1	Buchse	
6	909 6549 000	1	Pedal	
9	909 6594 000	3	Buchse	
12	145 0524 000	2	Klammer 4,8x200 schwarz	
15	909 6595 000	1	Halter / Schelle	
20	33006051	1	Ring D12	
22	909 6337 000	1	Schraube M5 x 12	
23	909 6878 000	1	Satz Befestigungsteile	
24	9098619000	2	WHEEL CASTOR D.100 PU SS KIT	OPTIONAL
24	9099028000	2	WHEEL CASTOR WITH HARDWARE KIT	INST. INSTR. 9099245000
25	9099014000	2	Lenkrolle Chromat	
18A	909 6621 000	1	Knopf BR 611	FOR SCRUBBER WITH DRIVE
21A	33004010	1	Schraube	

A: ONLY FOR BA 451 D / BA 531 D

B: ONLY FOR BA 451 / BA 531

Wheels and traction

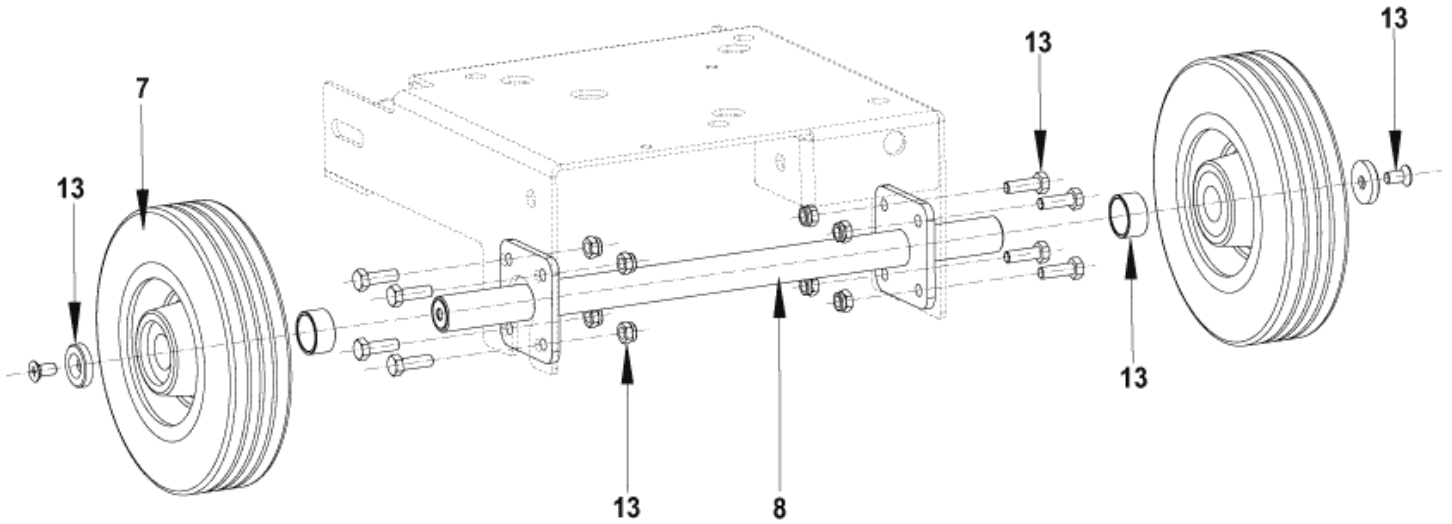
BA451/BA451D/BA531/BA 531D

31-03-2015

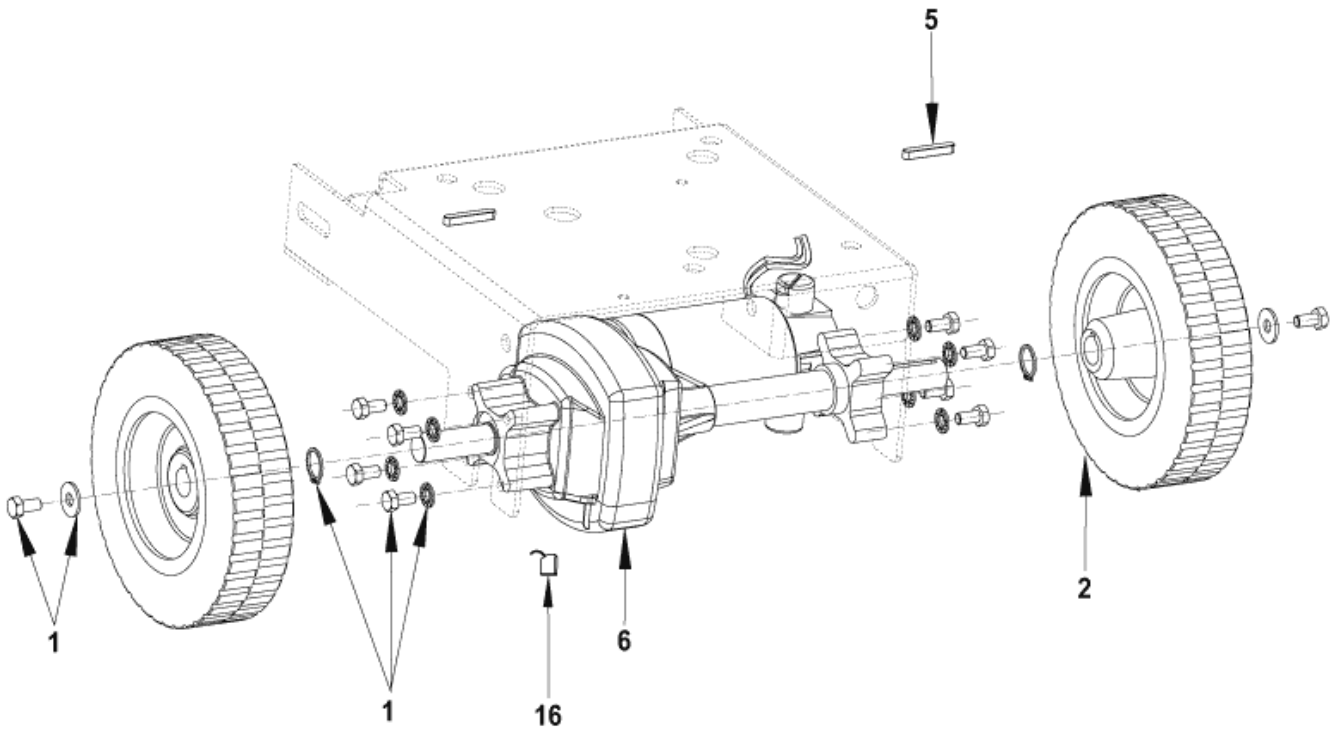
ET-Liste-Nr. E183113

9

SENZA TRAZIONE / WITHOUT TRACTION (BA 451 / BA 531)



CON TRAZIONE / WITH TRACTION (BA 451 D / BA 531 D)



Wheels and traction

BA451/BA451D/BA531/BA 531D

31-03-2015

ET-Liste-Nr. E183113

10

Pos	Artikelnr.	Me	Beschreibung
1	9098298000	1	Befestigungs-Kit f.
2	9097032000	2	WHEEL FRONT D.200 DRIVE OPTION
2	9099204000	2	Frontrad D200
5	146 0769 000	2	Passfeder 6 x 6 x 40
6	909 6548 000	1	MOTOR DRIVE 200W 24V
7	9097167000	2	Vorderrad OPTION
7	9099743000	1	Vorderrad D.200 Kit Contains 2 wheels
8	909 6508 000	1	Achse
13	9098299000	1	RadbefestigungsKit
16	145 5124 000	2	Kohlebürste 2 Stück

POSITION 2 9097032000 OPTION
POSITION 7 9097167000 OPTION

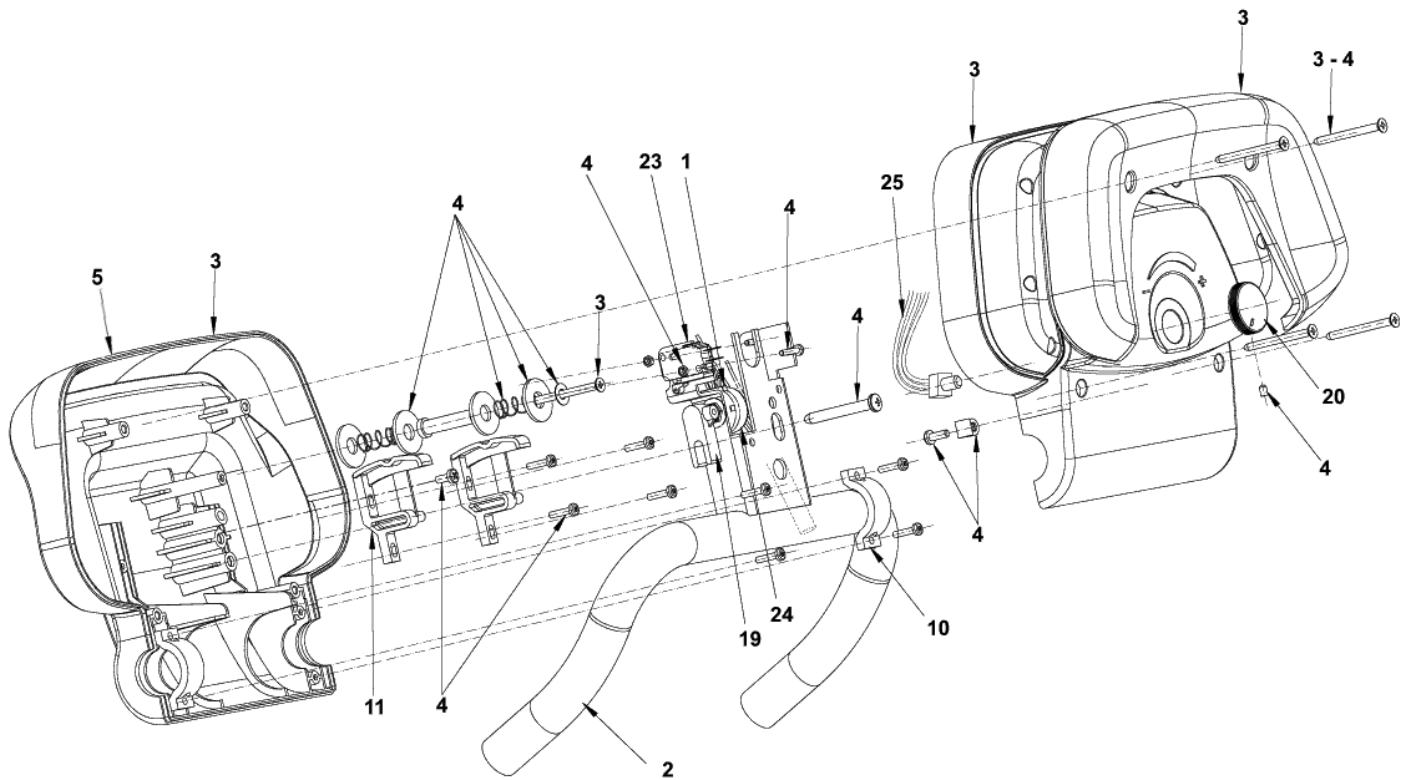
Handle assembly - BA 451 D - 531 D

BA451/BA451D/BA531/BA 531D

31-03-2015

ET-Liste-Nr. E183115

11



Handle assembly - BA 451 D - 531 D

BA451/BA451D/BA531/BA 531D

31-03-2015

ET-Liste-Nr. E183115

12

Pos	Artikelnr.	Me	Beschreibung
1	909 6578 000	1	Kabel BA 611
2	909 6653 000	1	Bügel
3	9097622000	1	Schaltergehäuse BA 611
4	9098300000	1	Fixierkit BA 451
5	9098792000	1	Gehäuseunterteil Kit TSB IT 2010-060
10	L08812279	2	Briede zu BA 600S
11	L08812282	2	Nockensteuerung /Microschzu BA 650/S
19	909 6038 000	1	Potentiometergestänge
20	909 6471 000	1	Drehknopf Potentiometer
23	9100000792	1	MICROSWITCH 16A 250V PKD
24	9100001062	1	POTENTIOMETER 5K 40 PKD
25	909 6544 000	1	Verkabelung Potentiometer zu BA 451

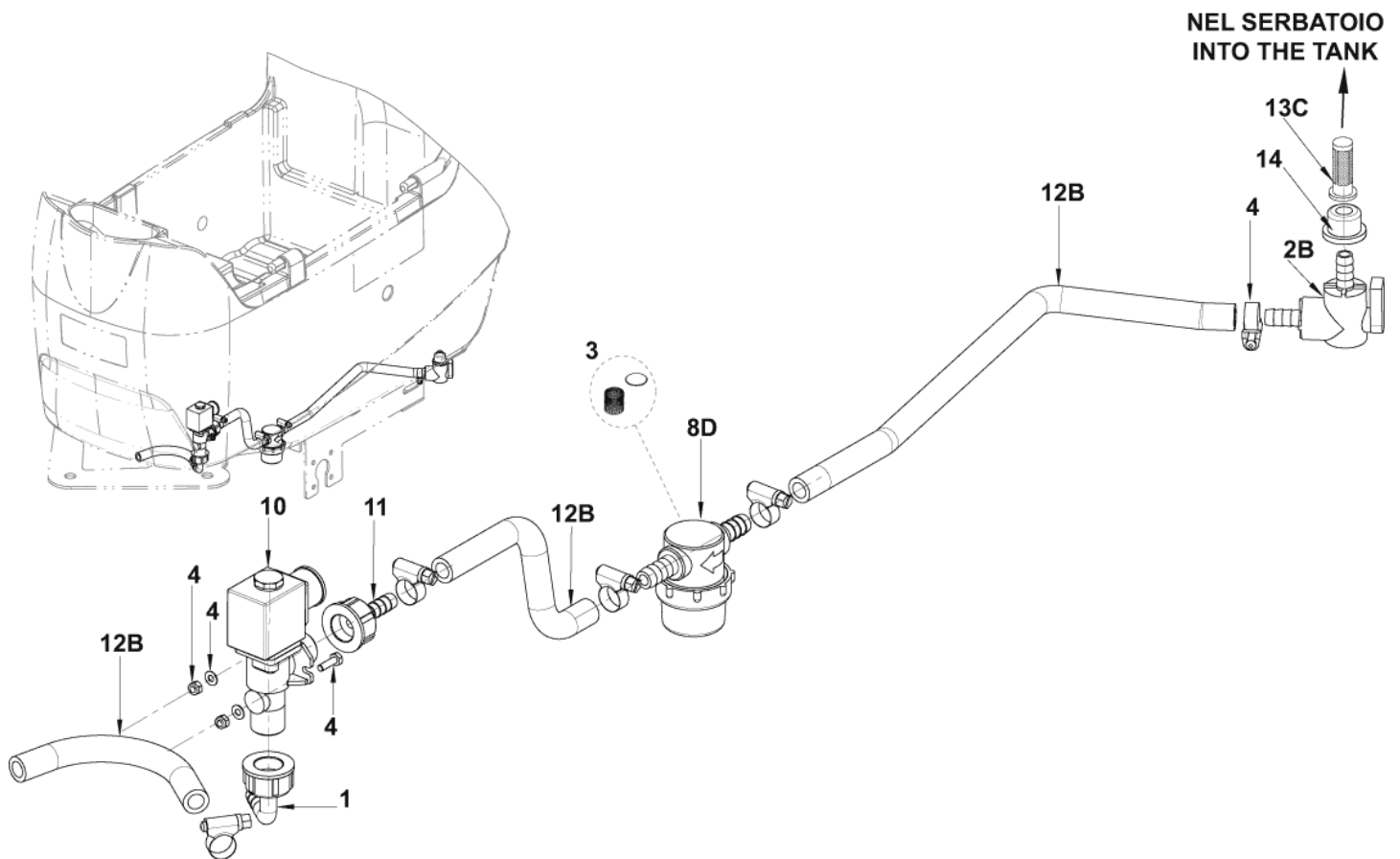
FRISCHWASSERSYSTEM

BA451/BA451D/BA531/BA 531D

31-03-2015

ET-Liste-Nr. E183117

13



FRISCHWASSERSYSTEM

BA451/BA451D/BA531/BA 531D

31-03-2015

ET-Liste-Nr. E183117

14

Pos	Artikelnr.	Me	Beschreibung	
1	9098777000	1	Anschlusswinkel 90 GRAD.KIT	
3	L08603893	1	Filter mit Dichtungssatz	
4	9098301000	1	Hardware Solution System	
0B	909 6896 000	1	Frischwasserkit	
10	909 6555 000	1	SOLENOID VALVE 24V	
11	910000106	1	HOLDER RUBBER 1/2 FEMALE KIT	
14	909 5286 000	1	Dichtung	
2B	9096994000	1	VALVE ELBOW	
8D	9097166000	1	FILTER COMPLETE KIT	
12B	9096995000	1	Schlauchsatz	
13C	9096916000	1	FILTER SOLUTION TANK	OPTION

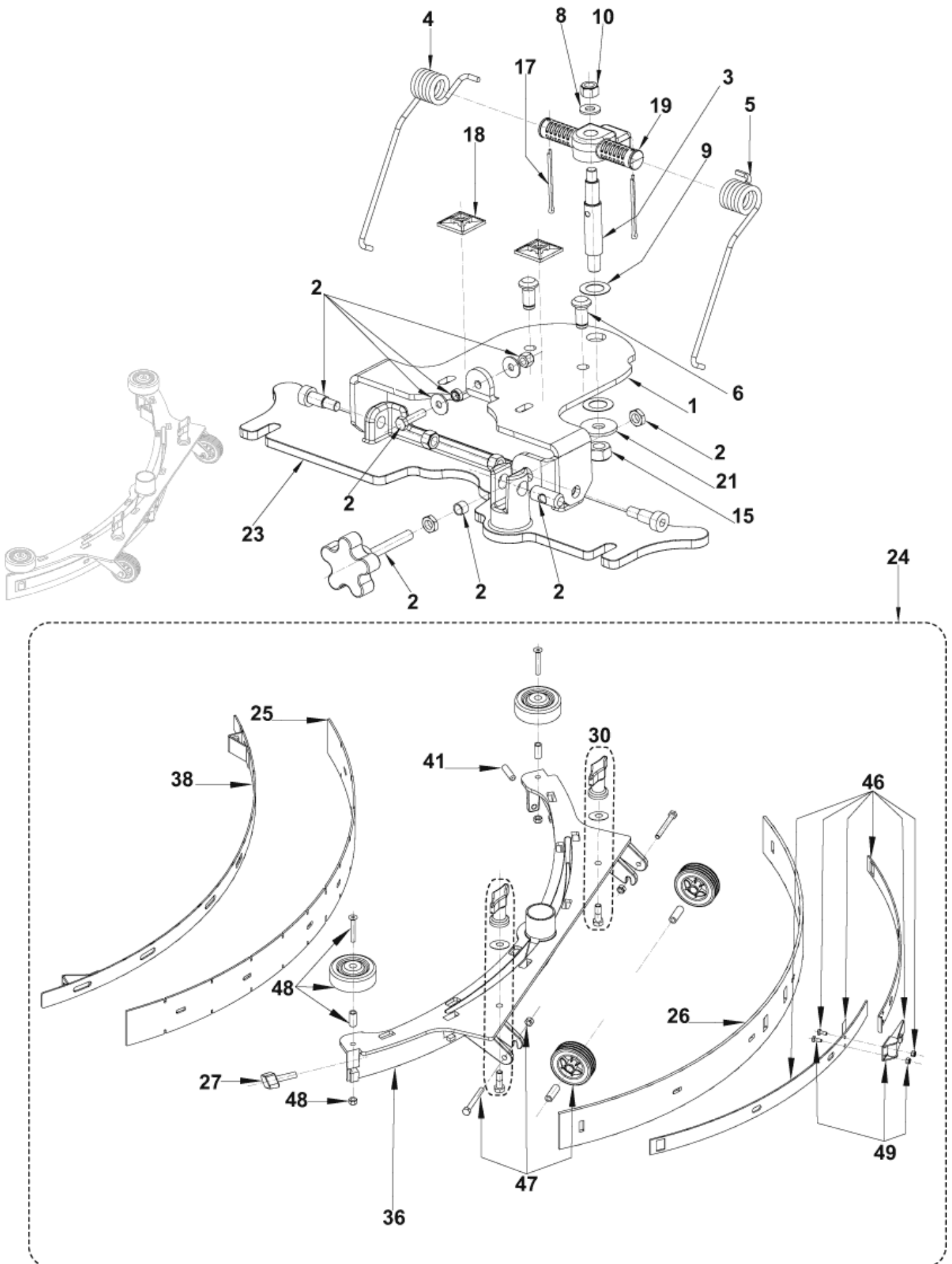
ABSAUGERSYSTEM

BA451/BA451D/BA531/BA 531D

31-03-2015

ET-Liste-Nr. E183119

15



ABSAUGERSYSTEM

BA451/BA451D/BA531/BA 531D

31-03-2015

ET-Liste-Nr. E183119

16

Pos	Artikelnr.	Me	Beschreibung	
0	9097548000	1	WASHER NYLON KIT F.SQUEE.SUPPORT	TSB IT 2007-031
0	9100000279	1	Gummilippen 740mm/29	INCL.POS.: 25-26
1	909 6494 000	1	Halterung f. Aufnahme	
2	909 6885 000	1	HARDWARE SQUEEGEE FIXING KIT	
3	909 6497 000	1	Bolzen	
4	909 6537 000	1	Spannfeder	
5	909 6538 000	1	SPRING.SQUEEGEE PUSHING	
6	909 6543 000	2	Bolzen	
8	33023208	1	WASHER M8 UNI6592 10 PCS SET	
9	L08238300	2	WASHER 15X25 UNI6592	
10	33005607	3	Mutter	
15	33005608	1	Mutter	
17	33005758	2	Splint	
18	909 6635 000	2	Flachanker	
19	909 6052 000	1	SUPPORT.SQUEEGEE SPRING	
21	L08604251	1	WASHER 10X30 UNI6592	
23	909 6045 000	1	SUPPORT, SQUEEGEE	
24	909 6851 000	1	SQUEEGEE CPL ALU KIT 30"	
27	9100000791	1	KNOB M8X30 THD STUD SS PKD	
30	9097637000	2	SQUEEGEE FIXING KIT	
36	909 6044 000	1	WELDMENT.SQUEEGEE TOOL	
38	909 6055 000	1	Halteband f. Gummilippe	
41	909 6600 000	1	Schraube M8X30 UNI5929 SS	
46	909 6882 000	1	HARDWARE SQU.BLADE FIXING KIT	
47	909 6883 000	2	WHEELS SQUEEGEE KIT	
48	909 6884 000	2	Abweisrolle - KIT	
49	909 6394 000	1	LATCH SQUEEGEE KIT	

POSITION 25-26: 909 6483 000 - 909 6484 000 INCLUDED IN THE KIT 909 6860 000

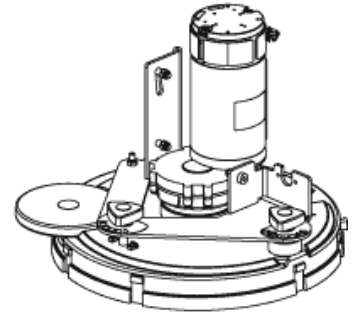
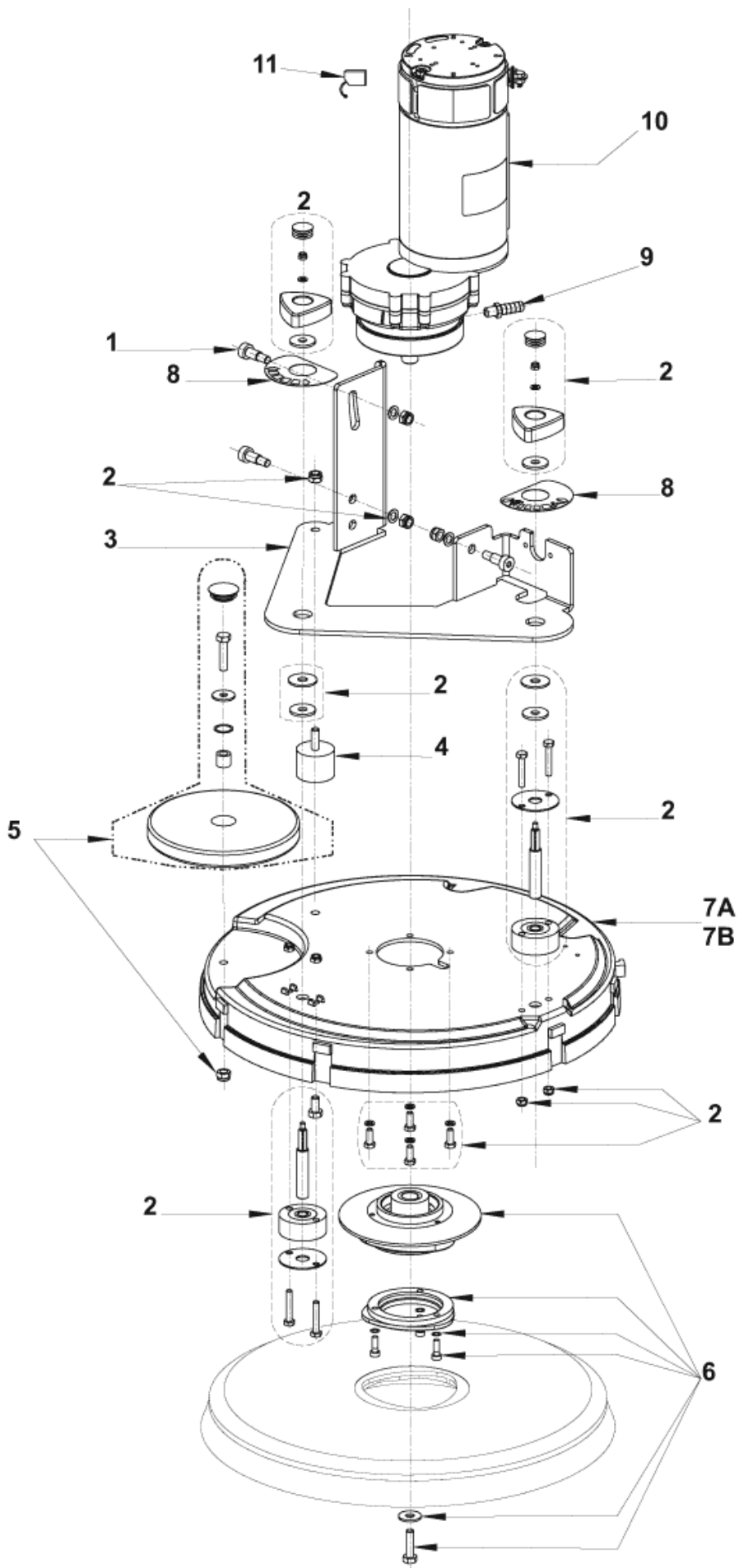
Brush system - BA 451 - BA 531

BA451/BA451D/BA531/BA 531D

31-03-2015

ET-Liste-Nr. E183123

17



Brush system - BA 451 - BA 531

BA451/BA451D/BA531/BA 531D

31-03-2015

ET-Liste-Nr. E183123

18

Pos	Artikelnr.	Me	Beschreibung	
0	9097599000	1	Motorschutz Kit	TSB IT 2008-014 - OPTION- INST.INSTR.909760000 FOR
0	L08812480	1	HUB,BRUSH	
1	909 6495 000	3	Schraube M10x16	
2	9099419000	1	HARDWARE BRUSH DECK SYST.KIT	
3	909 6485 000	1	Aufnahme	
4	910000868	1	VIBRATION DAMPING M8 60SH 2 PCS SET	
5	909 6887 000	1	Abweisrollenkit	
6	9097093000	1	Halter	
8	9097771000	1	Aufkleber BA 451	
9	L08601624	1	HOLDER RUBBER 1/4 D.10	
10	9098308000	1	REDUCTION GEARMOTOR 450W 24V	
11	909 5380 000	1	Kohlebürste KIT	FOR REDUCTION GEARMOTOR 909 6546 000 (LEROY SOMER)
11	9098376000	1	CARBON BRUSHES KIT 4 PCS	FOR REDUCTION GEARMOTOR 9098308000 (AMER)
11	9098674000	1	CARBON BRUSHES KIT 4 PCS	FOR REDUCTION GEARMOTOR 9098352000 (VIPER)
7A	909 6043 000	1	Bürstendeck	450MM/17"
7B	909 6042 000	1	Bürsten-Deck	530MM/20"

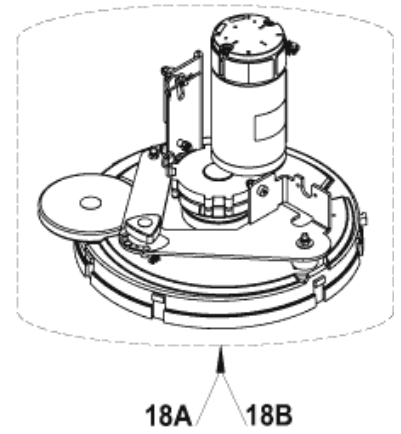
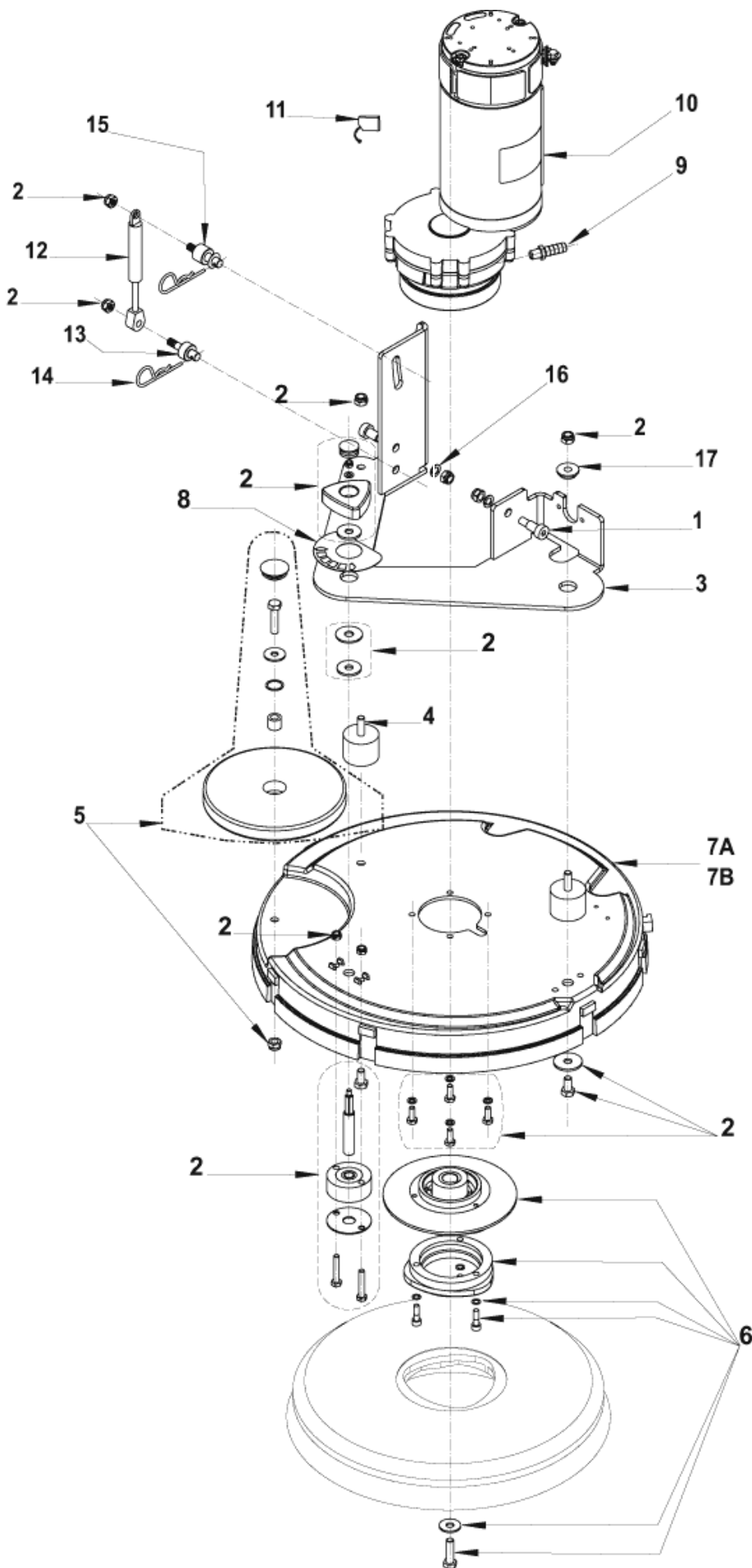
Brush system - BA 451 D - BA 531 D

BA451/BA451D/BA531/BA 531D

31-03-2015

ET-Liste-Nr. E183127

19



Brush system - BA 451 D - BA 531 D

BA451/BA451D/BA531/BA 531D

31-03-2015

ET-Liste-Nr. E183127

20

Pos	Artikelnr.	Me	Beschreibung	
0	9097599000	1	Motorschutz Kit	TSB IT 2008-014 - OPTION - INST.INSTR.909760000 FO
0	L08812480	1	HUB,BRUSH	
1	909 6495 000	3	Schraube M10x16	
2	9099419000	1	HARDWARE BRUSH DECK SYST.KIT	
3	909 6485 000	1	Aufnahme	
4	910000868	1	VIBRATION DAMPING M8 60SH 2 PCS SET	
5	909 6887 000	1	Abweisrollenkit	
6	9097093000	1	Halter	
8	9097771000	1	Aufkleber BA 451	
9	L08601624	1	HOLDER RUBBER 1/4 D.10	
10	9098308000	1	REDUCTION GERMOTOR 450W 24V	STARTING FROM SERIAL NUMBER 111332741
11	909 5380 000	1	Kohlebürste KIT	FOR REDUCTION GERMOTOR 909 6546 000 (LEROY SOMER)
11	9098376000	1	CARBON BRUSHES KIT 4 PCS	FOR REDUCTION GERMOTOR 9098308000 (AMER)
12	909 6514 000	1	Gasdruckfeder	
13	909 6516 000	1	Pin unten	
14	145 8564 000	2	Splint 3ZN zu AR 4090	
15	909 6515 000	1	Bolzen	
16	33005842	2	U-Scheibe	
17	909 6513 000	1	Flanschbuchse	
7A	909 6043 000	1	Bürstendeck	
7B	909 6042 000	1	Bürsten-Deck	
18A	909 6852 000	1	DECK BRUSH 450MM/18 KIT	
18B	909 6853 000	1	Bürstendeck 530mm	

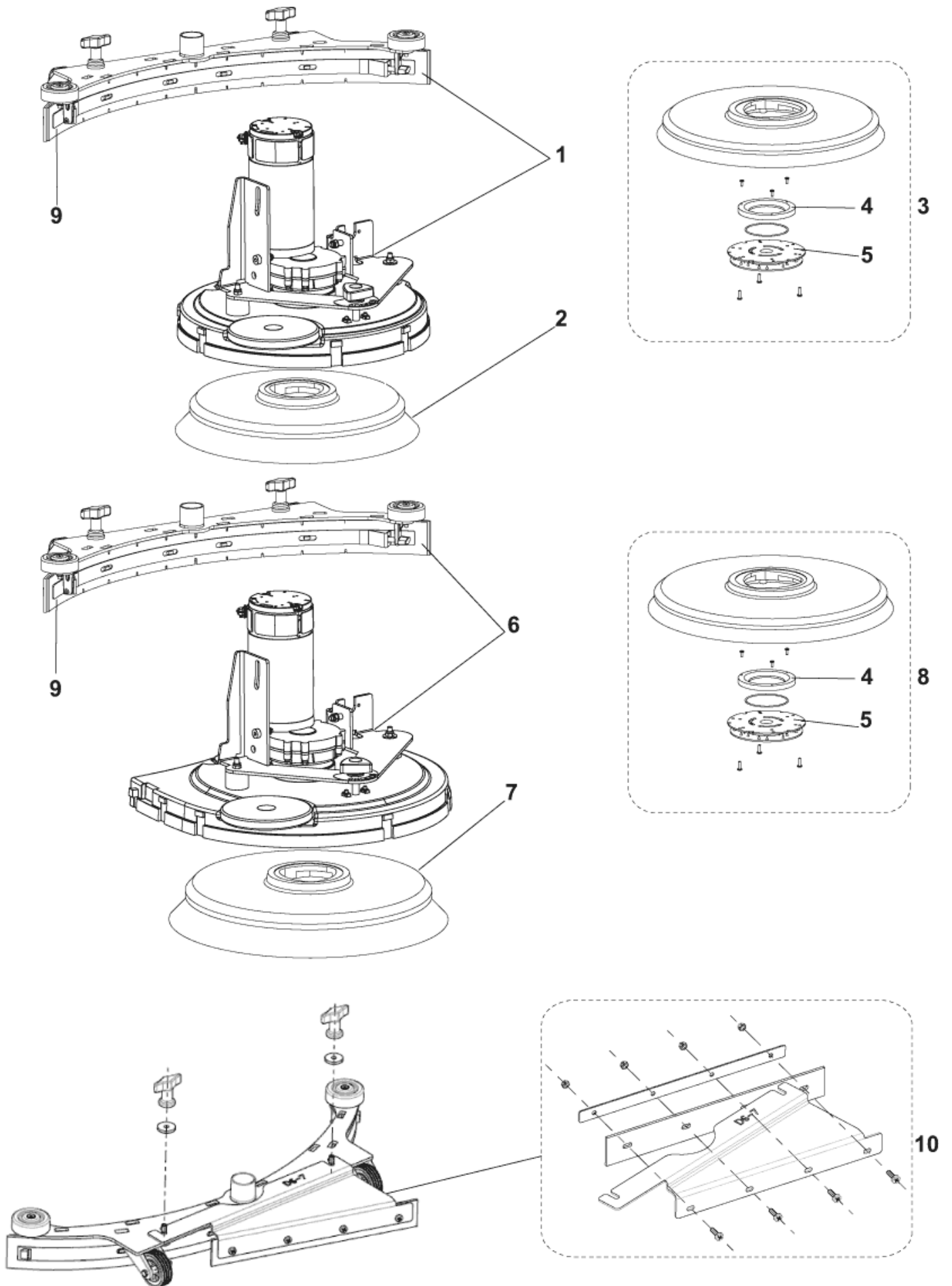
Zubehör Bürsten

BA451/BA451D/BA531/BA 531D

31-03-2015

ET-Liste-Nr. E183138

21



Zubehör Bürsten

BA451/BA451D/BA531/BA 531D

31-03-2015

ET-Liste-Nr. E183138

22

Pos	Artikelnr.	Me	Beschreibung	
0	909 6858 000	1	Sauglippenset Poly urethan	
0	9100000279	1	Gummilippen 740mm/29	
1	909 6847 000	1	DECK BRUSH 450MM/18 KIT W	
2	L08837020	1	BRUSH PROLENE 450MM	
2	L08837021	1	BRUSH PROLITE 450MM	
2	L08837022	1	BRUSH UNION MIX 450MM	COMPLEXITY REDUCTION
2	L08837023	1	BRUSH MIDLITE GRIT	COMPLEXITY REDUCTION
2	L08837024	1	BRUSH MID GRIT 240 450MM	COMPLEXITY REDUCTION
3	9099668000	1	PAD HOLDER 17 432MM	
3	L08837017	1	PAD HOLDER 450MM	
4	L08603966	1	PAD HOLDER KIT CPL 305	
5	56505195	1	Padverschluss mit Spange	
6	909 6848 000	1	Bürstenaggregat Absaug-	
7	L08837025	1	BRUSH PROLENE 530MM	
7	L08837026	1	BRUSH PROLITE 530MM	
7	L08837027	1	BRUSH UNION MIX 530MM	
7	L08837028	1	BRUSH, MIDLITE 180 GRIT	
7	L08837029	1	BRUSH, MIDGRIT MEDIUM	
7	L08837065	1	BRUSH MAGNA GRIT 46 530MM	
7	L08837066	1	BRUSH DYNA GRIT 80 530MM	
7	L08837067	1	BRUSH ASLIDEE GRIT 500	
8	9099671000	1	Padhalter 21" 530mm	
8	L08837018	1	PAD HOLDER 530MM	
9	909 6851 000	1	SQUEEGEE CPL ALU KIT 30"	
9	L08603878	1	SQUEEGEE COMPLETE KIT	
10	9098343000	1	THIRD BLADE SQUEEGEE KIT D6/7	OPTION - INST.INSTR. 9098337000

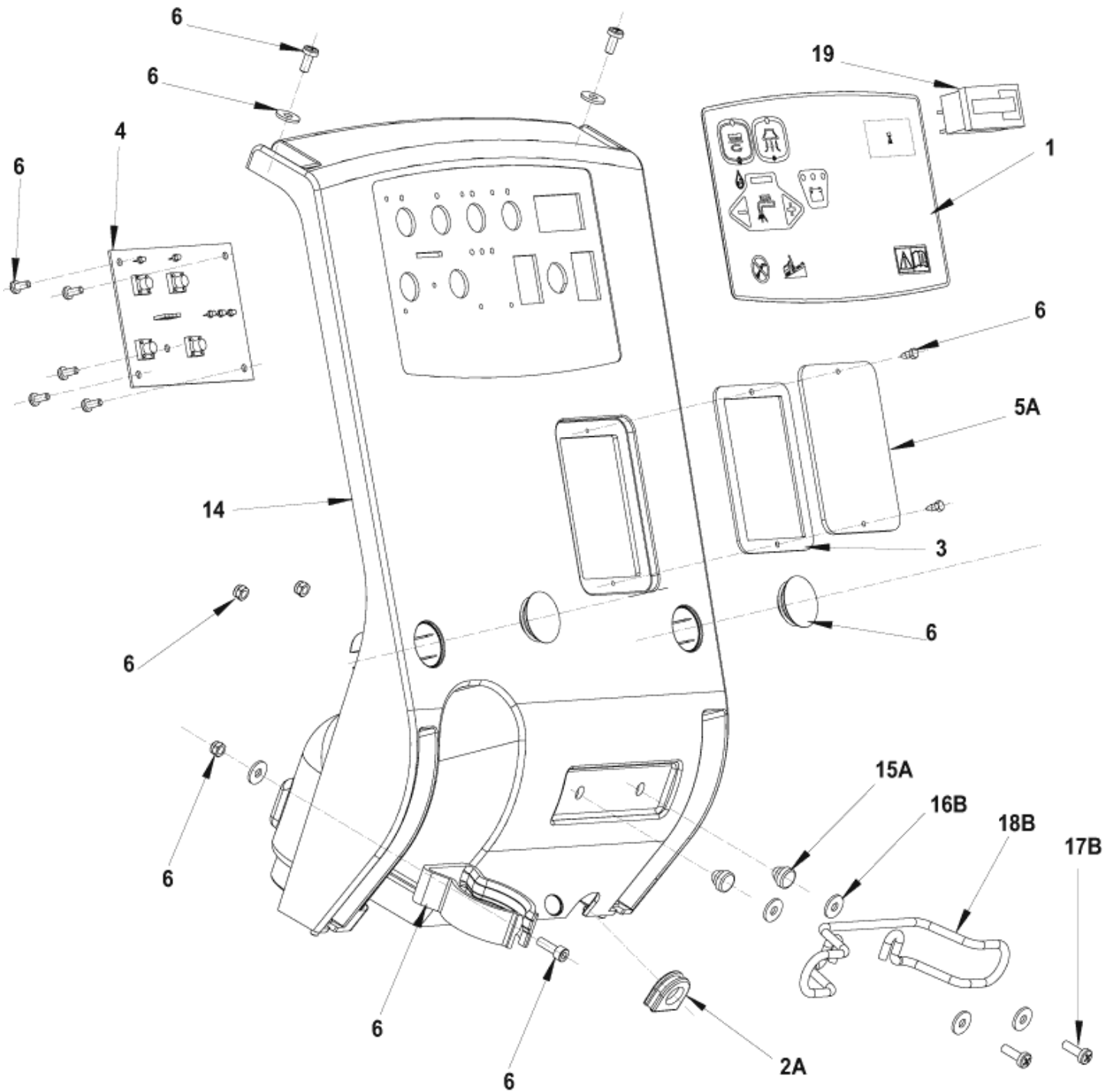
Control panel system - BA 451 - 531

BA451/BA451D/BA531/BA 531D

31-03-2015

ET-Liste-Nr. E183141

23



Control panel system - BA 451 - 531

BA451/BA451D/BA531/BA 531D

31-03-2015

ET-Liste-Nr. E183141

24

Pos	Artikelnr.	Me	Beschreibung
0	145 8368 000	1	Sicherung 3A
1	9098635000	1	Aufkleber Control Panel TSB IT 2009-025
3	909 6545 000	1	Dichtung
4	909 6552 000	1	Steuerung BA 531 D BEFORE SERIAL NUMBER 072115094
4	9100000174	1	CARD ELECTRONIC FUNCTIONS KIT STARTING FROM SERIAL NUMBER 072115094
6	9098302000	1	Bedienkonsolenkit
14	9097649000	1	Abdeckung Bedienfeld KIT
19	9096951000	1	BETRIEBSSTUNDENZÄHLER OPTION - INST-INSTR.9096952000
2A	909 6542 000	1	Abdichtung Kabel
5A	9100001065	1	COVER F INSPECTION PLATE BLACK PKD
15A	909 6553 000	2	Gummi
16B	145 1261 000	4	U-Scheibe
17B	146 2090 000	2	Schraube M5x16
18B	1466317000	1	SUPPORT CABLE KIT

A : ONLY VERSION WITHOUT BATTERY CHARGER ON BOARD

B : ONLY VERSION WITH BATTERY CHARGER ON BOARD

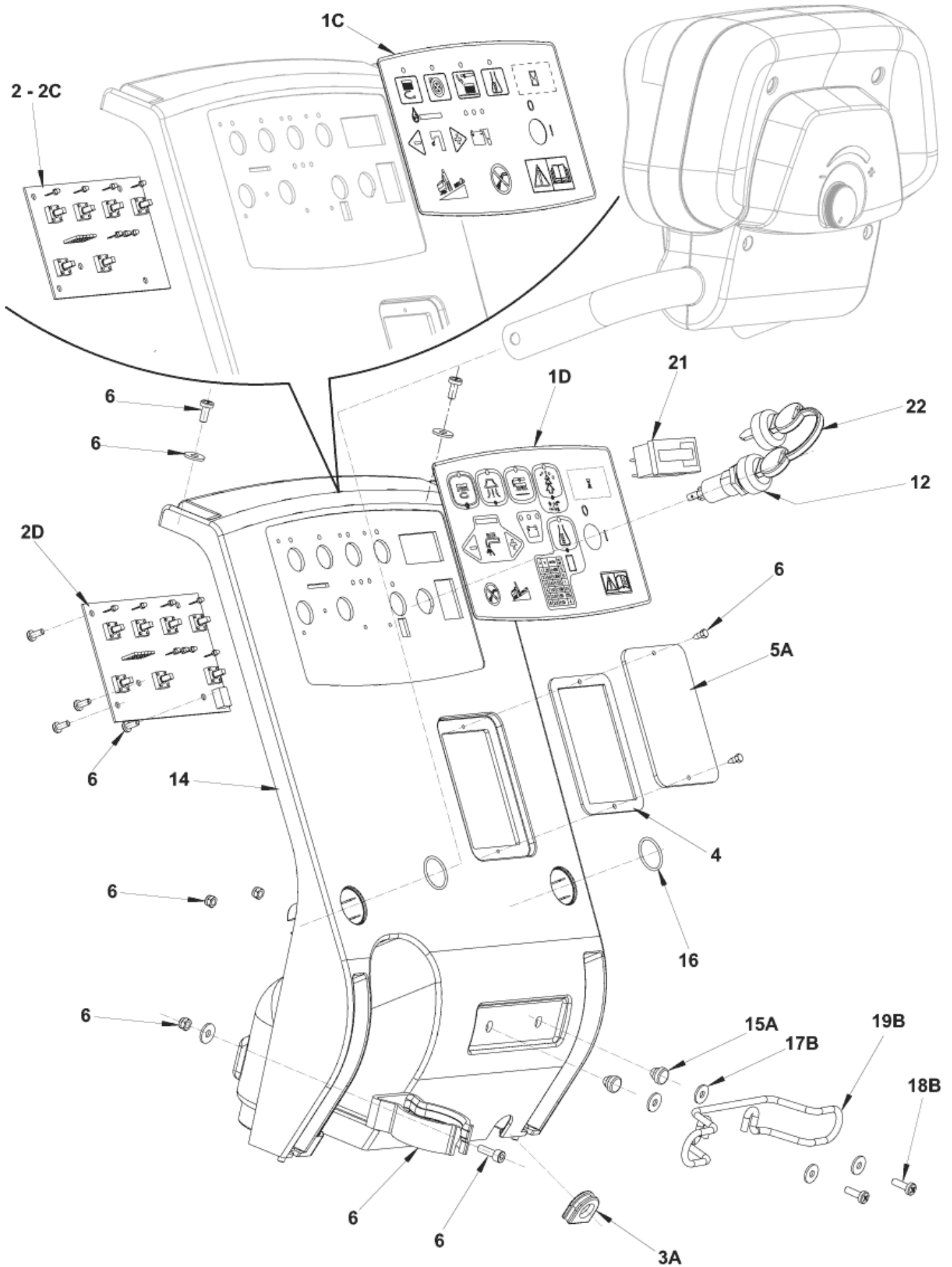
Control panel system - BA 451 D - 531 D

BA451/BA451D/BA531/BA 531D

31-03-2015

ET-Liste-Nr. E183143

25



Control panel system - BA 451 D - 531 D

BA451/BA451D/BA531/BA 531D

31-03-2015

ET-Liste-Nr. E183143

26

Pos	Artikelnr.	Me	Beschreibung	
0	145 8368 000	2	Sicherung 3A	
0	909 6678 000	1	Sicherung 20A GLASS DELAYED	
2	909 6499 000	1	Elektronikkarte	BEFORE S.NO.072014255
4	909 6545 000	1	Dichtung	
6	9098302000	1	Bedienkonsolenkit	
12	146 2888 000	1	Schlüsselschalter	
14	9098632000	1	Abdeckung	
16	909 6675 000	2	O-Ring	
1C	909 6057 000	1	Bedienungsfolienicht mehr bestellen	TSB IT 2009-025 - VALID TILL MAY 2010
1D	9100001243	1	DECAL CONTROL PANEL ECOFLEX PKD	STARTING FROM JUNE 2010
21	9096951000	1	BETRIEBSSTUNDENZÄHLER	OPTION- INST.INSTR.9096952000
22	146 2887 000	1	KEY (2 PCS)	
2C	9100000175	1	CARD ELECTRONIC FUNCTIONS KIT	FROM S.NO.072014255
2D	9100000179	1	Elektronik	STARTING FROM JUNE 2010
3A	909 6542 000	1	Abdichtung Kabel	
5A	9100001065	1	COVER F INSPECTION PLATE BLACK PKD	
15A	909 6553 000	2	Gummi	
17B	145 1261 000	4	U-Scheibe	
18B	146 2090 000	2	Schraube M5x16	
19B	1466317000	1	SUPPORT CABLE KIT	

Note:

A : ONLY VERSION WITHOUT BATTERY CHARGER ON BOARD

B : ONLY VERSION WITH BATTERY CHARGER ON BOARD

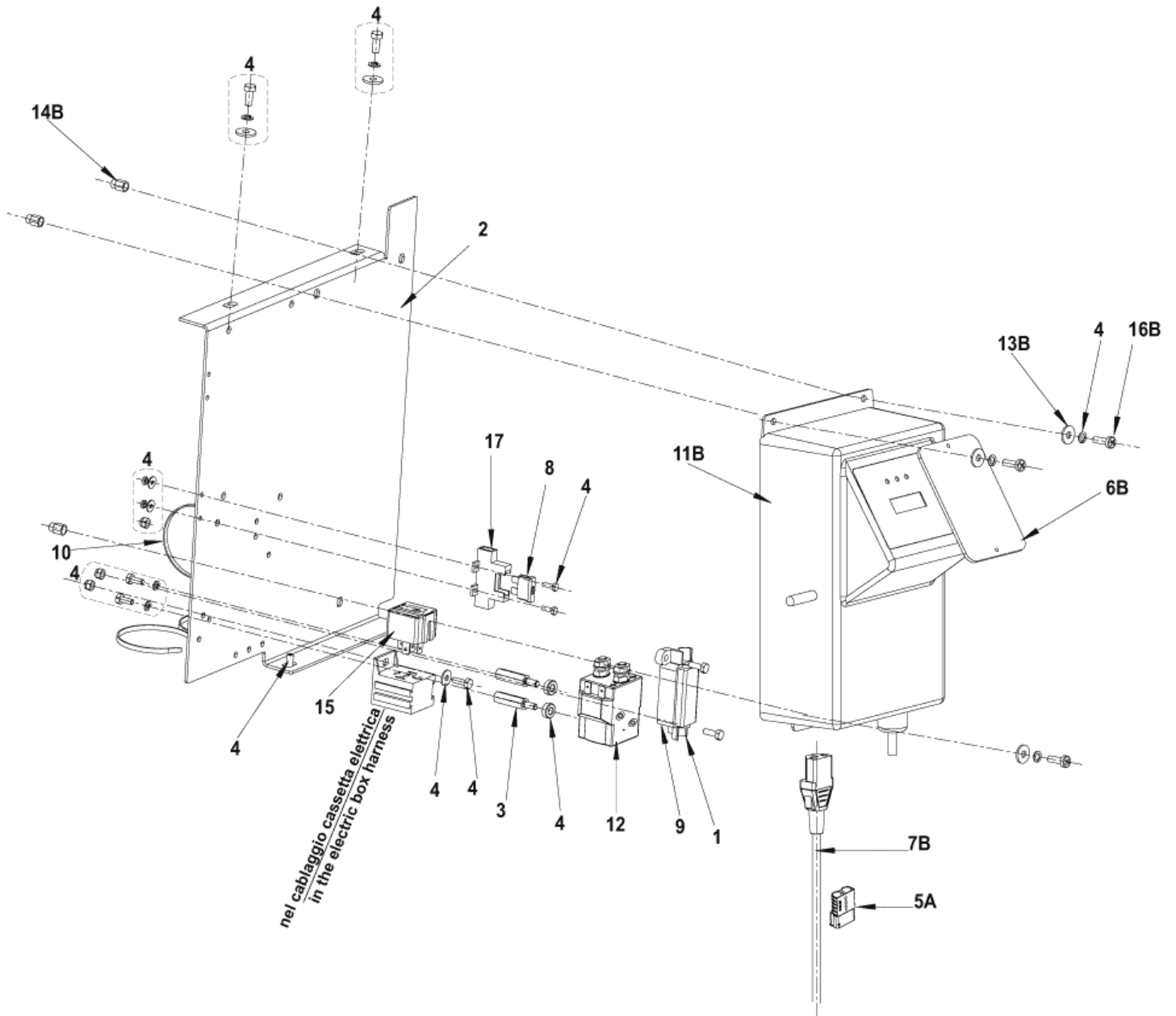
Electrical components - BA 451 - 531

BA451/BA451D/BA531/BA 531D

31-03-2015

ET-Liste-Nr. E183145

27



Electrical components - BA 451 - 531

BA451/BA451D/BA531/BA 531D

31-03-2015

ET-Liste-Nr. E183145

28

Pos	Artikelnr.	Me	Beschreibung	
0	909 6616 000	1	Elektronikbox	before SN 070100309
0	909 6618 000	1	Batteriekabelsatz	
0	909 6840 000	1	HARNESS VACUUM MOTOR	
0	909 6844 000	1	Kabel	before SN 070100309
0	9096963000	1	Kabelbaum	starting from SN 070100309
0	9096971000	1	Kabelbaum f. Maschine	starting from SN 070100309
0	9097590000	1	Batterieverbindungskabel	
1	145 8046 000	1	HOLDER FUSE	
2	909 6498 000	1	Support Electric	
3	909 6676 000	2	SPACER M4 L25	
4	9098303000	1	Befestigungskit	
8	145 8513 000	1	Sicherung 30A	
9	145 3824 000	1	Sicherung Strip 40A	
10	145 1449 000	3	TIE CABLE 3.6x140 BLACK	
12	9097208000	1	Relais	
15	909 6622 000	1	RELAY 24V 40A	
17	146 0660 000	2	Sicherungshalter	
5A	9098762000	1	Stecker 120A ROT	
6B	9100001064	1	COVER F INSPECTION PLATE TRANSP. PKD	
7B	909 5676 000	1	Kabel Ex. Plug	
7B	9096914000	1	Knickschutz	
7B	9100000790	1	CABLE EXTENSION EU PLUG L.1000 PKD	
11B	9098297000	1	CHARGER BATTERY ON BOARD 24V 13A 240V	
13B	33005912	3	Unterlegscheibe M5	
14B	145 6132 000	3	INSERT M5	
16B	146 1711 000	3	SCREW M5X20 PAN HD PHIL ISO7045	

A: ONLY VERSIONS WITHOUT BATTERY CHARGER ON BOARD

B: ONLY VERSIONS WITH BATTERY CHARGER ON BOARD

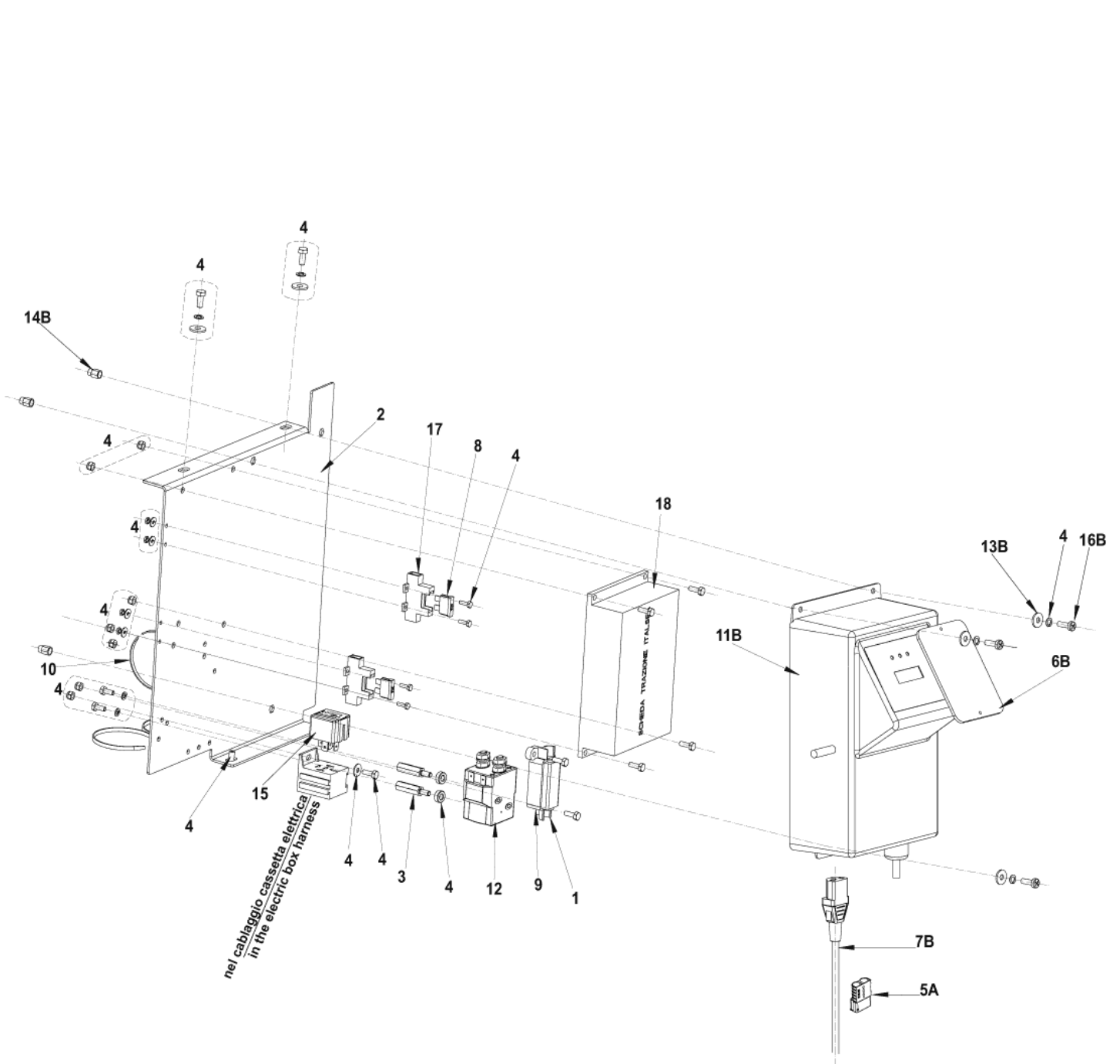
Electrical components - BA 451 D - 531 D

BA451/BA451D/BA531/BA 531D

31-03-2015

ET-Liste-Nr. E183147

29



Electrical components - BA 451 D - 531 D

BA451/BA451D/BA531/BA 531D

31-03-2015

ET-Liste-Nr. E183147

30

Pos	Artikelnr.	Me	Beschreibung	
0	909 6617 000	1	Kabelbaum	before SN 064927239
0	909 6618 000	1	Batteriekabelsatz	
0	909 6839 000	1	Kabelbaum	before SN 064927239
0	909 6840 000	1	HARNESS VACUUM MOTOR	
0	9096964000	1	HARNESS ELECTRIC BOX	starting from SN 064927239
0	9096972000	1	Kabelbaum	FROM S. NO. 064927239
0	9097590000	1	Batterieverbindungskabel	
0	9098640000	1	Kabelbaum	FROM JUNE 2010
1	145 8046 000	1	HOLDER FUSE	
2	909 6498 000	1	Support Electric	
3	909 6676 000	2	SPACER M4 L25	
4	9098303000	1	Befestigungskit	contains all Hardware shown in this system
8	145 8513 000	2	Sicherung 30A	
9	145 3824 000	1	Sicherung Strip 40A	
10	145 1449 000	3	TIE CABLE 3.6x140 BLACK	
12	9097209000	1	SWITCH ELECTROMAGNETIC 24V	
15	909 6622 000	1	RELAY 24V 40A	
17	146 0660 000	2	Sicherungshalter	
18	9100000173	1	Fahrelektronik Kit	
5A	9098762000	1	Stecker 120A ROT	
6B	9100001064	1	COVER F INSPECTION PLATE TRANSP. PKD	
7B	909 5676 000	1	Kabel Ex. Plug	
7B	9096914000	1	Knickschutz	
7B	9100000790	1	CABLE EXTENSION EU PLUG L.1000 PKD	
11B	9098297000	1	CHARGER BATTERY ON BOARD 24V 13A 240V	
13B	33005912	3	Unterlegscheibe M5	
14B	145 6132 000	3	INSERT M5	
16B	146 1711 000	3	SCREW M5X20 PAN HD PHIL ISO7045	

A: ONLY VERSIONS WITHOUT BATTERY CHARGER ON BOARD

B: ONLY VERSIONS WITH BATTERY CHARGER ON BOARD

Accessories Extra pressure-Splash guards

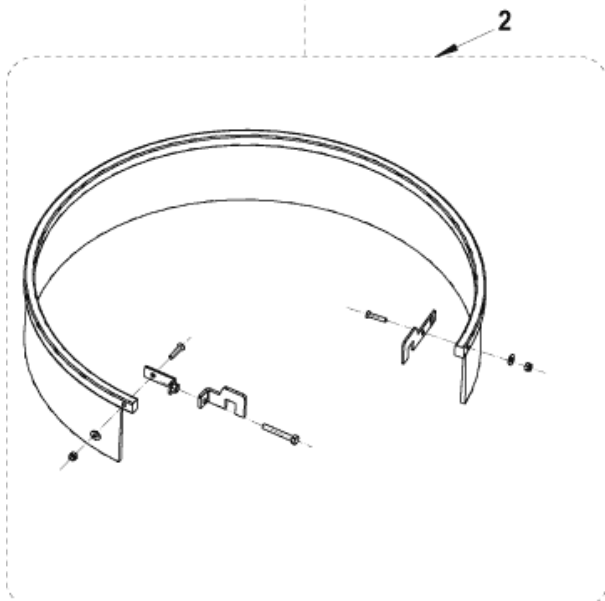
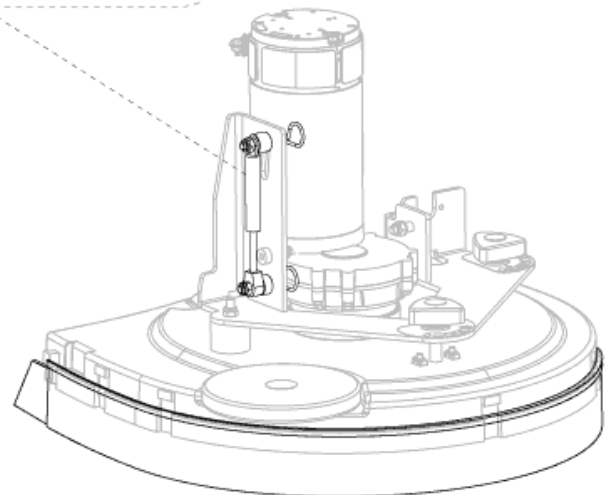
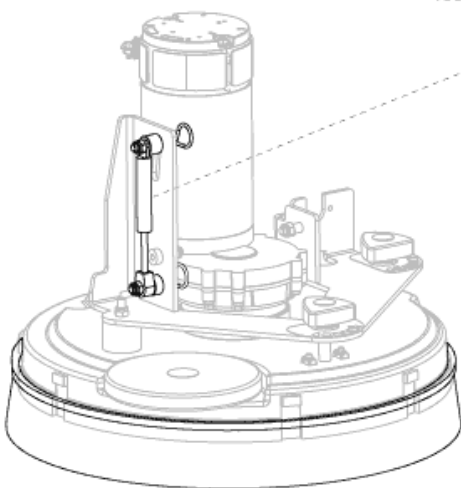
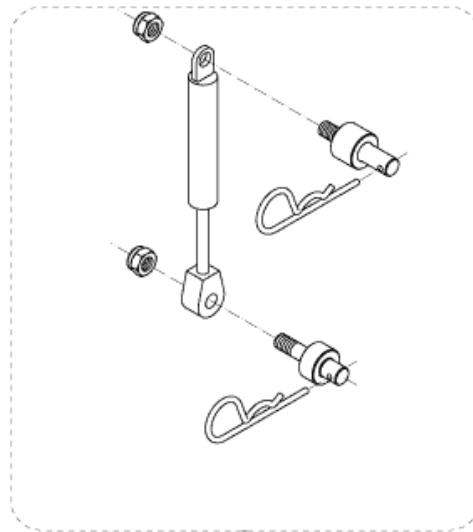
BA451/BA451D/BA531/BA 531D

31-03-2015

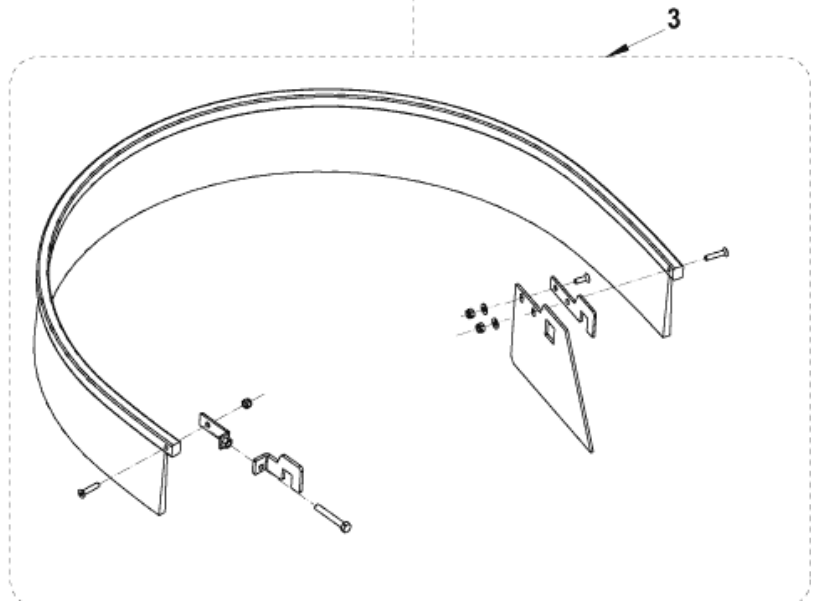
ET-Liste-Nr. E183149

31

KIT EXTRA PRESSIONE - EXTRA PRESSURE KIT (BA 451 / BA 531)



KIT PARASPRUZZI 17"
SPLASH GUARD 17" KIT
(BA 451 / BA 451 D)



KIT PARASPRUZZI 20"
SPLASH GUARD 20" KIT
(BA 531 / BA 531 D)

Accessories Extra pressure-Splash guards

BA451/BA451D/BA531/BA 531D

31-03-2015

ET-Liste-Nr. E183149

32

Pos	Artikelnr.	Me	Beschreibung	
1	909 6738 000	1	Gasdruckfeder Kit	OPTION- INST.INSTR. 909 6759 000
2	909 6737 000	1	Spritz-Schutz-Kit	OPTION- INST.INSTR. 909 6745 000
3	909 6736 000	1	SPLASH GUARD KIT 531-551	OPTION- INST.INSTR. 909 6745 000

Accessories Battery Charger

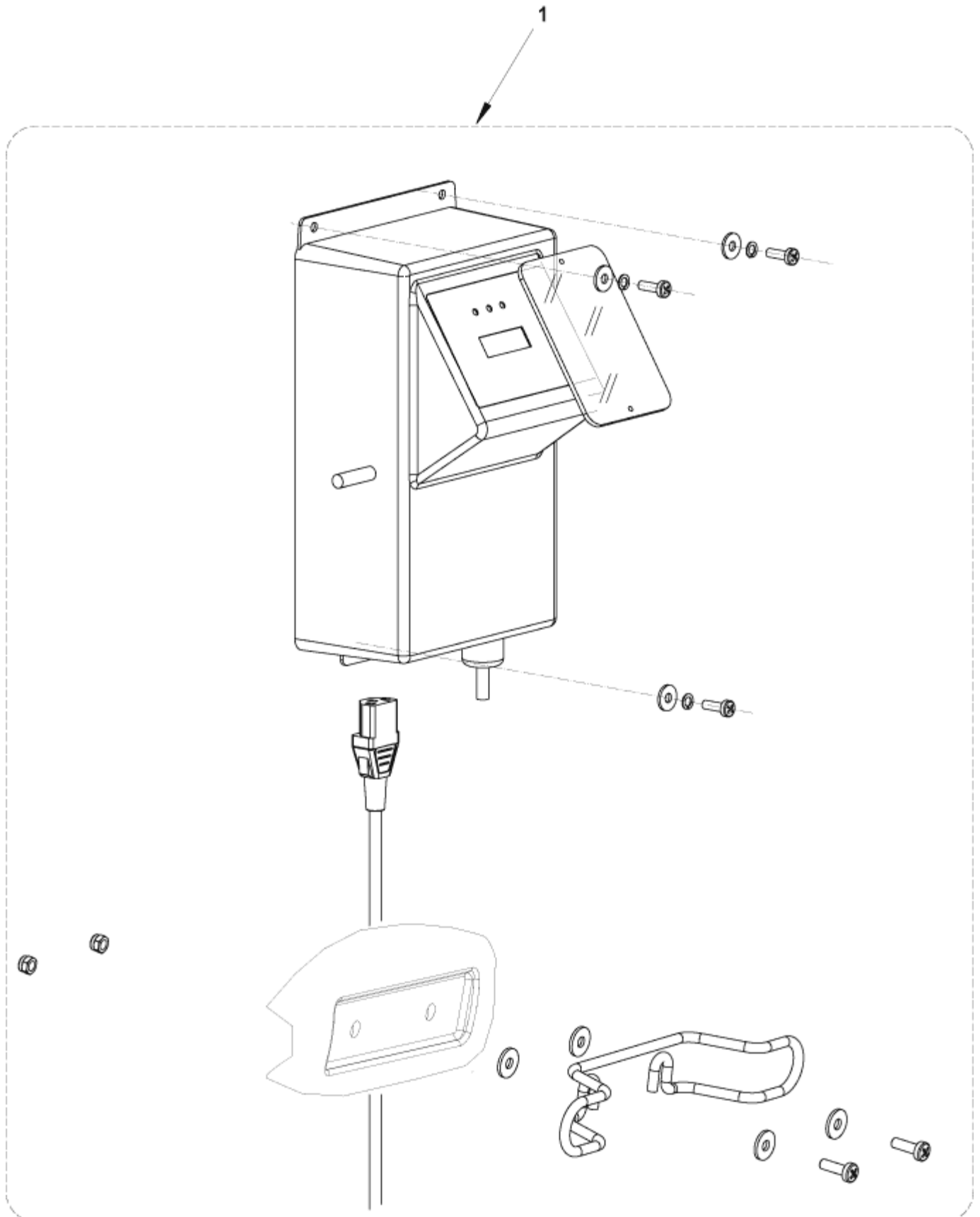
BA451/BA451D/BA531/BA 531D

31-03-2015

ET-Liste-Nr. E183151

33

KIT CARICABATTERIA - BATTERY CHARGER KIT



Accessories Battery Charger

BA451/BA451D/BA531/BA 531D

31-03-2015

ET-Liste-Nr. E183151

34

Pos	Artikelnr.	Me	Beschreibung	
0	9096914000	1	Knickschutz	US
0	9098259000	1	CHARGER BATT. ON BOARD 24V 10A 100V KIT	JAPAN -OPTION- INST.INSTR. 9098262000
0	9098260000	1	CHARGER BATT. ON BOARD 24V 10A 100V	JAPAN
0	9100000790	1	CABLE EXTENSION EU PLUG L.1000 PKD	EU
1	909 6739 000	1	CHARGER BATTERY CPL KIT	EU -OPTION- INST.INSTR. 909 6746 000

Accessories Ecoflex system

BA451/BA451D/BA531/BA 531D

31-03-2015

ET-Liste-Nr. E183153

36

Pos	Artikelnr.	Me	Beschreibung
0	909 6187 000	1	HARNESS PUMP
1	909 6743 000	1	EDS Kit BA 451 / 531 D Accessory - INST.INSTR.9096936000
2	909 6806 000	1	Rohr zu chemischen Kit
7	909 6902 000	1	Aufkleber
8	9098264000	1	Befestigungskit
9	56315108	1	Wasserpumpe 24 V EDS
10	909 6903 000	1	EDS Behälter nachfüllbarBA 611
11	56315517	1	EDS Tankdeckel zu BA 551
12	56315522	1	Rückschlagventil EDS
13	56315523	1	Deckel EDS-Schwimmer
14	56315527	1	Buchseneinsatz EDSzu BA 551
16	909 6592 000	1	DECAL DETERGENT ADJUST.
20	909 6183 000	1	EDS Pumpe BA551D/ BA611D
22	909 6092 000	1	T- Stück
23	909 6639 000	1	Konsole f. EDS Behälter

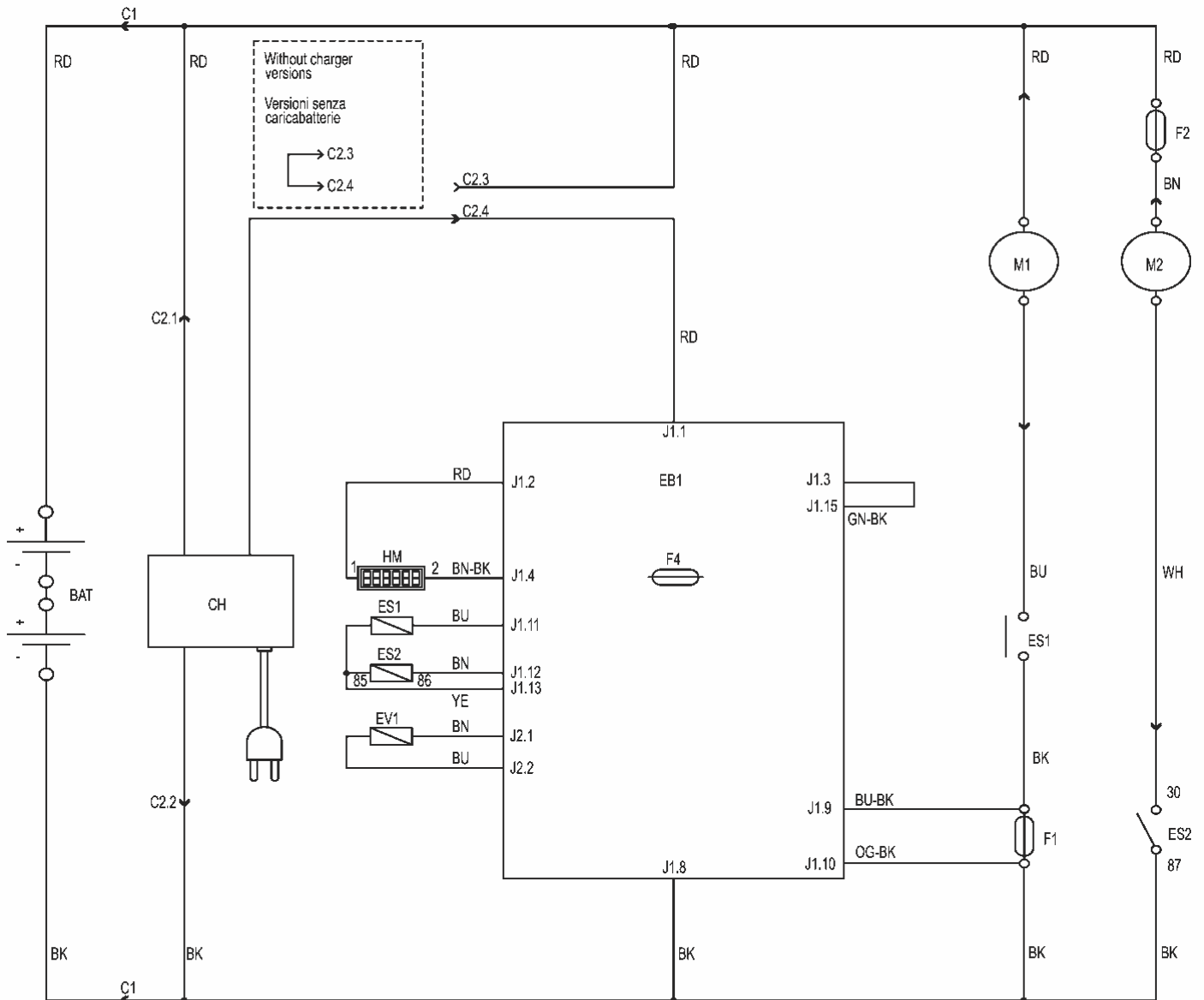
Wiring diagram - BA 451 - 531

BA451/BA451D/BA531/BA 531D

31-03-2015

ET-Liste-Nr. E183154

37



WIRING DIAGRAM
BA 451 - BA 531

Rev. A

909 6530 000

COMPONENTS / COMPONENTI		
BAT	24V BATTERIES	BATTERIE 24V
C1	BATTERY CONNECTOR	CONNETTORE BATTERIE
C2	CHARGER CONNECTOR	CONNETTORE CARICABATTERIE
CH	BATTERY CHARGER (OPT)	CARICABATTERIE (OPT)
CS	BRUSH DECK CONNECTOR	CONNETTORE TESTATA SPAZZOLE
EB1	CONTROL PANEL BOARD	SCHEMA ELETTRONICA CONTROLLO FUNZIONI
ES1	BRUSH MOTOR ELECTROM. SWITCH	TELERUTTORE MOTORI SPAZZOLE
ES2	VACUUM MOTOR ELECTROM. SWITCH	RELE' ASPIRATORE
EV1	WATER ELECTROVALVE	ELETTROVALVOLA ACQUA
F1	BRUSH DECK FUSE	FUSIBILE TESTATA SPAZZOLE
F2	VACUUM MOTOR FUSE	FUSIBILE ASPIRATORE
F4	LOW POWER CIRCUIT FUSE	FUSIBILE CIRCUITI DI SEGNALE
HM	HOURMETER (OPT)	CONTAORE (OPT)
M1	BRUSH MOTOR	MOTORE SPAZZOLA
M2	VACUUM MOTOR	MOTORE ASPIRATORE

Wiring diagram - BA 451 - 531

BA451/BA451D/BA531/BA 531D

31-03-2015

ET-Liste-Nr. E183154

38

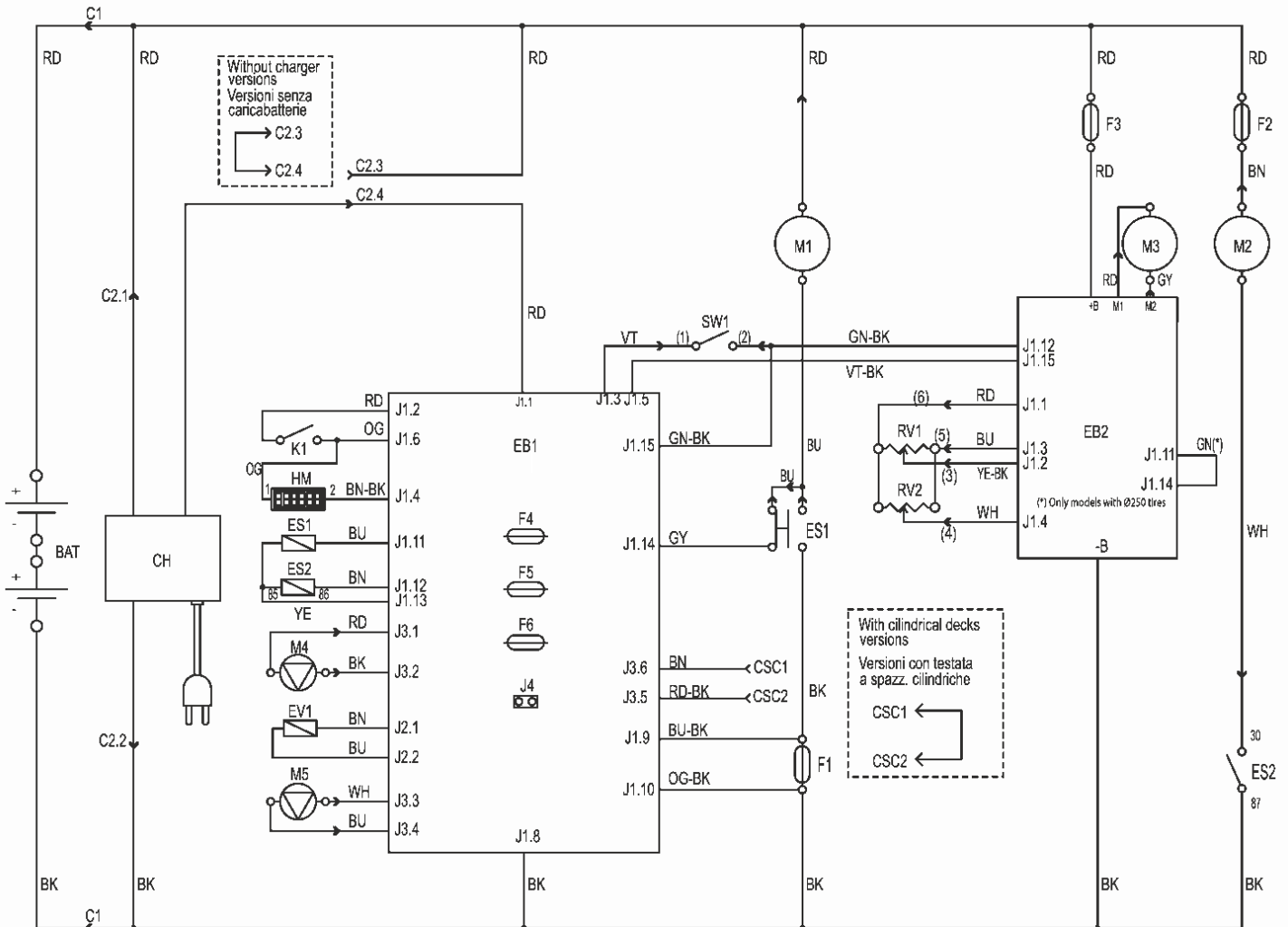
Wiring diagram - BA 451 D - 531 D

BA451/BA451D/BA531/BA 531D

31-03-2015

ET-Liste-Nr. E183155

39



WIRING DIAGRAM - BA 451 D / BA 531 D

Rev. B

909 6529 000

COMPONENTS / COMPONENTI					
BAT	24V BATTERIES	BATTERIE 24V	K1	KEY SWITCH	CHIAVE
C1	BATTERY CONNECTOR	CONNETTORE BATTERIE	M1	BRUSH MOTOR	MOTORE SPAZZOLA
C2	CHARGER CONNECTOR	CONNETTORE CARICABATTERIE	M2	VACUUM MOTOR	MOTORE ASPIRATORE
CH	BATTERY CHARGER (OPT)	CARICABATTERIE (OPT)	M3	DRIVE MOTOR	MOTORE TRAZIONE
CSC	CILINDRICAL DECK SECONDARY CONNECTOR	CONN. SECONDARIO TESTATA SPAZZ. CILINDRICHE	M4	WATER PUMP (OPT)	POMPA ACQUA (OPT)
EB1	CONTROL PANEL BOARD	SCHEDA ELETTRONICA CONTROLLO FUNZIONI	M5	DETERGENT PUMP (OPT)	POMPA DETERGENTE (OPT)
EB2	DRIVE ELECTRONIC BOARD	SCHEDA ELETTRONICA TRAZIONE	RV1	SPEED POTENTIOMETER	POTENZIOMETRO VELOCITA'
ES1	BRUSH MOTOR ELECTROM. SWITCH	TELERUTTORE MOTORI SPAZZOLE	RV2	MAX SPEED POTENTIOMETER	POTENZIOMETRO VELOCITA' MASSIMA
ES2	VACUUM MOTOR ELECTROM. SWITCH	RELE' ASPIRATORE	SW1	BRUSHES / DRIVE MICROSWITCH	MICROINTERR. CONSENSO SPAZZOLE/TRAZIONE
EV1	ELECTROVALVE	ELETTROVALVOLA			
F1	BRUSH DECK FUSE	FUSIBILE TESTATA SPAZZOLE			
F2	VACUUM MOTOR FUSE	FUSIBILE ASPIRATORE			
F3	DRIVE SYSTEM FUSE	FUSIBILE SISTEMA DI TRAZIONE			
F4	LOW POWER CIRCUIT FUSE	FUSIBILE CIRCUITI DI SEGNALE			
F5	BRUSH RELEASE FUSE	FUSIBILE SGANCIO SPAZZOLE			
F6	PUMP FUSE	FUSIBILE POMPE			
HM	HOURMETER (OPT)	CONTAORE (OPT)			

Wiring diagram - BA 451 D - 531 D

BA451/BA451D/BA531/BA 531D

31-03-2015

ET-Liste-Nr.

E183155

40

Recommended spare parts 1

BA451/BA451D/BA531/BA 531D

31-03-2015

ET-Liste-Nr. E183156

41

Keine Zeichnung zur ET-Liste

Recommended spare parts 1

BA451/BA451D/BA531/BA 531D

31-03-2015

ET-Liste-Nr. E183156

42

Pos	Artikelnr.	Me	Beschreibung	
1	909 6650 000	1	Schwamm FrischwassertankBA 531	BA 451 / BA 451 D / BA 531 / BA 531 D
2	909 6681 000	1	FrischwasserschlauchBA 451	BA 451 / BA 451 D / BA 531 / BA 531 D
3	L08812457	1	CAP,TANK LOCKING	BA 451 / BA 451 D / BA 531 / BA 531 D
4	909 6874 000	1	CABLE TANK KIT	BA 451 / BA 451 D / BA 531 / BA 531 D
5	9098265000	1	HARDWARE SOLUTION TANK KIT	BA 451 / BA 451 D / BA 531 / BA 531 D
6	9099852000	1	Saugschlauch Kit	BA 451 / BA 451 D / BA 531 / BA 531 D
7	9099165000	1	Ablaufschlauch RAL 7001	BA 451 / BA 451 D / BA 531 / BA 531 D
8	L08812259	2	CAGE,FLOAT CP	BA 451 / BA 451 D / BA 531 / BA 531 D
9	L08812373	1	BALL FLOATING	BA 451 / BA 451 D / BA 531 / BA 531 D
10	145 0543 000	2	CLAMP 14/32-52	BA 451 / BA 451 D / BA 531 / BA 531 D
12	909 6877 000	1	Motor Befestigungskit	BA 451 / BA 451 D / BA 531 / BA 531 D
13	909 6876 000	1	Befestigungskit	BA 451 / BA 451 D / BA 531 / BA 531 D
14	9099401000	1	MOTOR VACUUM KIT	BA 451 / BA 451 D / BA 531 / BA 531 D
15	9098231000	1	Kohlebürstensatz 2Stck.	BA 451 / BA 451 D / BA 531 / BA 531 D
16	909 6491 000	1	PANEL,ACOUSTIC INSULATION	BA 451 / BA 451 D / BA 531 / BA 531 D
17	9098057000	1	Dichtung f. Vacuummotor	BA 451 / BA 451 D / BA 531 / BA 531 D
18	9097555000	1	Dichtung	BA 451 / BA 451 D / BA 531 / BA 531 D
19	909 6672 000	1	FILTER	BA 451 / BA 451 D / BA 531 / BA 531 D
20	9099028000	2	WHEEL CASTOR WITH HARDWARE KIT	BA 451/ BA 531
21	9099028000	2	WHEEL CASTOR WITH HARDWARE KIT	BA 451 D / BA 531 D
22	909 6878 000	1	Satz Befestigungsteile	BA 451 / BA 451 D / BA 531 / BA 531 D
23	9099028000	2	WHEEL CASTOR WITH HARDWARE KIT	
25	909 6548 000	1	MOTOR DRIVE 200W 24V	BA 451 D / BA 531 D
26	145 5124 000	2	Kohlebürste 2 Stück	BA 451 D / BA 531 D
27	L08812282	2	Nockensteuerung /Microschzu BA 650/S	BA 451 D / BA 531 D
28	9098300000	1	Fixierkit BA 451	BA 451 D / BA 531 D
29	9100001062	1	POTENTIOMETER 5K 40 PKD	BA 451 D / BA 531 D
30	9100000792	1	MICROSWITCH 16A 250V PKD	BA 451 D / BA 531 D
31	9096994000	1	VALVE ELBOW	BA 451 / BA 451 D / BA 531 / BA 531 D
32	9097166000	1	FILTER COMPLETE KIT	BA 451 / BA 451 D / BA 531 / BA 531 D
33	9096995000	1	Schlauchsatz	BA 451 / BA 451 D / BA 531 / BA 531 D
34	909 6555 000	1	SOLENOID VALVE 24V	BA 451 / BA 451 D / BA 531 / BA 531 D
35	9100000106	1	HOLDER RUBBER 1/2 FEMALE KIT	BA 451 / BA 451 D / BA 531 / BA 531 D
36	9098777000	1	Anschlusswinkel 90 GRAD.KIT	BA 451 / BA 451 D / BA 531 / BA 531 D

Recommended spare parts 2

BA451/BA451D/BA531/BA 531D

31-03-2015

ET-Liste-Nr.

E183157

43

Keine Zeichnung zur ET-Liste

Recommended spare parts 2

BA451/BA451D/BA531/BA 531D

31-03-2015

ET-Liste-Nr. E18315/

44

Pos	Artikelnr.	Me	Beschreibung	
37	909 6055 000	1	Halteband f. Gummilippe	BA 451 / BA 451 D / BA 531 / BA 531 D
38	909 6044 000	1	WELDMENT.SQUEEGEE TOOL	BA 451 / BA 451 D / BA 531 / BA 531 D
39	9097637000	1	SQUEEGEE FIXING KIT	BA 451 / BA 451 D / BA 531 / BA 531 D
40	9100000791	1	KNOB M8X30 THD STUD SS PKD	BA 451 / BA 451 D / BA 531 / BA 531 D
43	909 6851 000	1	SQUEEGEE CPL ALU KIT 30"	BA 451 / BA 451 D / BA 531 / BA 531 D
44	909 6882 000	1	HARDWARE SQU.BLADE FIXING KIT	BA 451 / BA 451 D / BA 531 / BA 531 D
45	909 6883 000	1	WHEELS SQUEEGEE KIT	BA 451 / BA 451 D / BA 531 / BA 531 D
46	9100000279	1	Gummilippen 740mm/29	BA 451 / BA 451 D / BA 531 / BA 531 D
47	909 6884 000	1	Abweisrolle - KIT	BA 451 / BA 451 D / BA 531 / BA 531 D
48	909 6394 000	1	LATCH SQUEEGEE KIT	BA 451 / BA 451 D / BA 531 / BA 531 D
49	909 6885 000	1	HARDWARE SQUEEGEE FIXING KIT	BA 451 / BA 451 D / BA 531 / BA 531 D
50	909 6852 000	1	DECK BRUSH 450MM/18 KIT	BA 451 D
51	909 6853 000	1	Bürstendeck 530mm	BA 531 D
52	909 6043 000	1	Bürstendeck	BA 451/ BA 451 D
53	909 6042 000	1	Bürsten-Deck	BA 531/ BA 531 D
54	9098308000	1	REDUCTION GEARMOTOR 450W 24V	BA 451 D / BA 531 D
55	9098376000	1	CARBON BRUSHES KIT 4 PCS	BA 451 D / BA 531 D
56	145 8564 000	2	Splint 3ZN zu AR 4090	BA 451 D / BA 531 D
57	909 6514 000	1	Gasdruckfeder	BA 451 D / BA 531 D
58	L08601624	1	HOLDER RUBBER 1/4 D.10	BA 451 / BA 451 D / BA 531 / BA 531 D
59	9100000868	1	VIBRATION DAMPING M8 60SH 2 PCS SET	BA 451 / BA 451 D / BA 531 / BA 531 D
60	9097093000	1	Halter	BA 451 / BA 451 D / BA 531 / BA 531 D
61	909 6887 000	1	Abweisrollenkit	BA 451 / BA 451 D / BA 531 / BA 531 D
62	9099419000	1	HARDWARE BRUSH DECK SYST.KIT	BA 451 / BA 451 D / BA 531 / BA 531 D
63	9100000174	1	CARD ELECTRONIC FUNCTIONS KIT	BA 451/ BA 531
64	9098635000	1	Aufkleber Control Panel	BA 451/ BA 531
65	146 2888 000	1	Schlüsselschalter	BA 451 D/ BA 531 D
66	9100000175	1	CARD ELECTRONIC FUNCTIONS KIT	BA 451 D/ BA 531 D
66	9100000179	1	Elektronik	
67	9100001243	1	DECAL CONTROL PANEL ECOFLEX PKD	BA 451 D/ BA 531 D
68	145 8368 000	1	Sicherung 3A	BA 451 / BA 451 D / BA 531 / BA 531 D
69	9100000173	1	Fahrelektronik Kit	BA 451 D/ BA 531 D
70	9097209000	1	SWITCH ELECTROMAGNETIC 24V	BA 451 D/ BA 531 D
71	9098762000	1	Stecker 120A ROT	BA 451 / BA 451 D / BA 531 / BA 531 D
72	909 6622 000	1	RELAY 24V 40A	BA 451 / BA 451 D / BA 531 / BA 531 D
73	145 3824 000	1	Sicherung Strip 40A	BA 451 / BA 451 D / BA 531 / BA 531 D
74	145 8513 000	1	Sicherung 30A	BA 451 / BA 451 D / BA 531 / BA 531 D
75	9098297000	1	CHARGER BATTERY ON BOARD 24V 13A 240V	BA 451 / BA 451 D / BA 531 / BA 531 D

POSITIONS 41-42: 909 6483 000 - 909 6484 000 INCLUDED IN THE KIT 909 6860 000

Optionals

BA451/BA451D/BA531/BA 531D

31-03-2015

ET-Liste-Nr. E183158

45

Keine Zeichnung zur ET-Liste

Optionals

BA451/BA451D/BA531/BA 531D

31-03-2015

ET-Liste-Nr. E183158

46

Pos	Artikelnr.	Me	Beschreibung	
1	909 6743 000	1	EDS Kit BA 451 / 531 D	BA 451 D / BA 531 D
2	909 6806 000	1	Rohr zu chemischen Kit	BA 451 D / BA 531 D
3	56315108	1	Wasserpumpe 24 V EDS	BA 451 D / BA 531 D
4	909 6903 000	1	EDS Behälter nachfüllbarBA 611	BA 451 D / BA 531 D
5	56315517	1	EDS Tankdeckel zu BA 551	BA 451 D / BA 531 D
6	56315522	1	Rückschlagventil EDS	BA 451 D / BA 531 D
7	56315523	1	Deckel EDS-Schwimmer	BA 451 D / BA 531 D
8	56315527	1	Buchseneinsatz EDSzu BA 551	BA 451 D / BA 531 D
9	909 6183 000	1	EDS Pumpe BA551D/ BA611D	BA 451 D / BA 531 D
10	909 6092 000	1	T- Stück	BA 451 D / BA 531 D
11	909 6847 000	1	DECK BRUSH 450MM/18 KIT W	BA 451
12	909 6848 000	1	Bürstenaggregat Absaug-	BA 531
13	9097167000	2	Vorderrad	BA 451 / BA 531
14	909 6738 000	1	Gasdruckfeder Kit	BA 451 / BA 531
15	909 6736 000	1	SPLASH GUARD KIT 531-551	BA 531 / BA 531 D
16	909 6737 000	1	Spritz-Schutz-Kit	BA 451 / BA 451 D
17	L08837020	1	BRUSH PROLENE 450MM	BA 451 / BA 451 D
18	L08837021	1	BRUSH PROLITE 450MM	BA 451 / BA 451 D
19	L08837022	1	BRUSH UNION MIX 450MM	BA 451 / BA 451 D
20	L08837023	1	BRUSH MIDLITE GRIT	BA 451 / BA 451 D
21	L08837024	1	BRUSH MID GRIT 240 450MM	BA 451 / BA 451 D
22	9099668000	1	PAD HOLDER 17 432MM	BA 451 / BA 451 D
22	L08837017	1	PAD HOLDER 450MM	BA 451 / BA 451 D
23	L08837025	1	BRUSH PROLENE 530MM	BA 531 / BA 531 D
24	L08837026	1	BRUSH PROLITE 530MM	BA 531 / BA 531 D
25	L08837027	1	BRUSH UNION MIX 530MM	BA 531 / BA 531 D
26	L08837028	1	BRUSH, MIDLITE 180 GRIT	BA 531 / BA 531 D
27	L08837029	1	BRUSH, MIDGRIT MEDIUM	BA 531 / BA 531 D
28	L08837065	1	BRUSH MAGNA GRIT 46 530MM	BA 531 / BA 531 D
29	L08837066	1	BRUSH DYNA GRIT 80 530MM	BA 531 / BA 531 D
30	L08837067	1	BRUSH ASLIDEE GRIT 500	BA 531 / BA 531 D
31	9099671000	1	Padhalter 21" 530mm	BA 531 / BA 531 D
31	L08837018	1	PAD HOLDER 530MM	BA 531 / BA 531 D
32	9097032000	2	WHEEL FRONT D.200 DRIVE	BA 451 D / BA 531 D
33	L08603878	1	SQUEEGEE COMPLETE KIT	BA 451 / BA 451 D / BA 531 / BA 531 D
34	909 6858 000	1	Sauglippenset Poly urethan	BA 451 / BA 451 D / BA 531 / BA 531 D
35	909 6739 000	1	CHARGER BATTERY CPL KIT	BA 451 / BA 451 D / BA 531 / BA 531 D
36	9097290000	1	HOSE FILLING	BA 451 / BA 451 D / BA 531 / BA 531 D
37	9096916000	1	FILTER SOLUTION TANK	BA 451 / BA 451 D / BA 531 / BA 531 D-OPTION
38	9096951000	1	BETRIEBSSTUNDENZÄHLER	BA 451 / BA 451 D / BA 531 / BA 531 D
39	909 6734 000	1	Haltenetz	BA 451 / BA 451 D / BA 531 / BA 531 D
40	909 5065 000	1	FILTER ANTIFOAMING	BA 451 / BA 451 D / BA 531 / BA 531 D
41	9098343000	1	THIRD BLADE SQUEEGEE KIT D6/7	BA 451 / BA 451 D / BA 531 / BA 531 D

Optionals

BA451/BA451D/BA531/BA 531D

31-03-2015

ET-Liste-Nr. E183158

47

Pos	Artikelnr.	Me	Beschreibung	
42	9098853000	1	Winkel 90 Grad	TSB-IT 2010-061
43	910000335	1	STRAP ANTISTATIC KIT	OPT

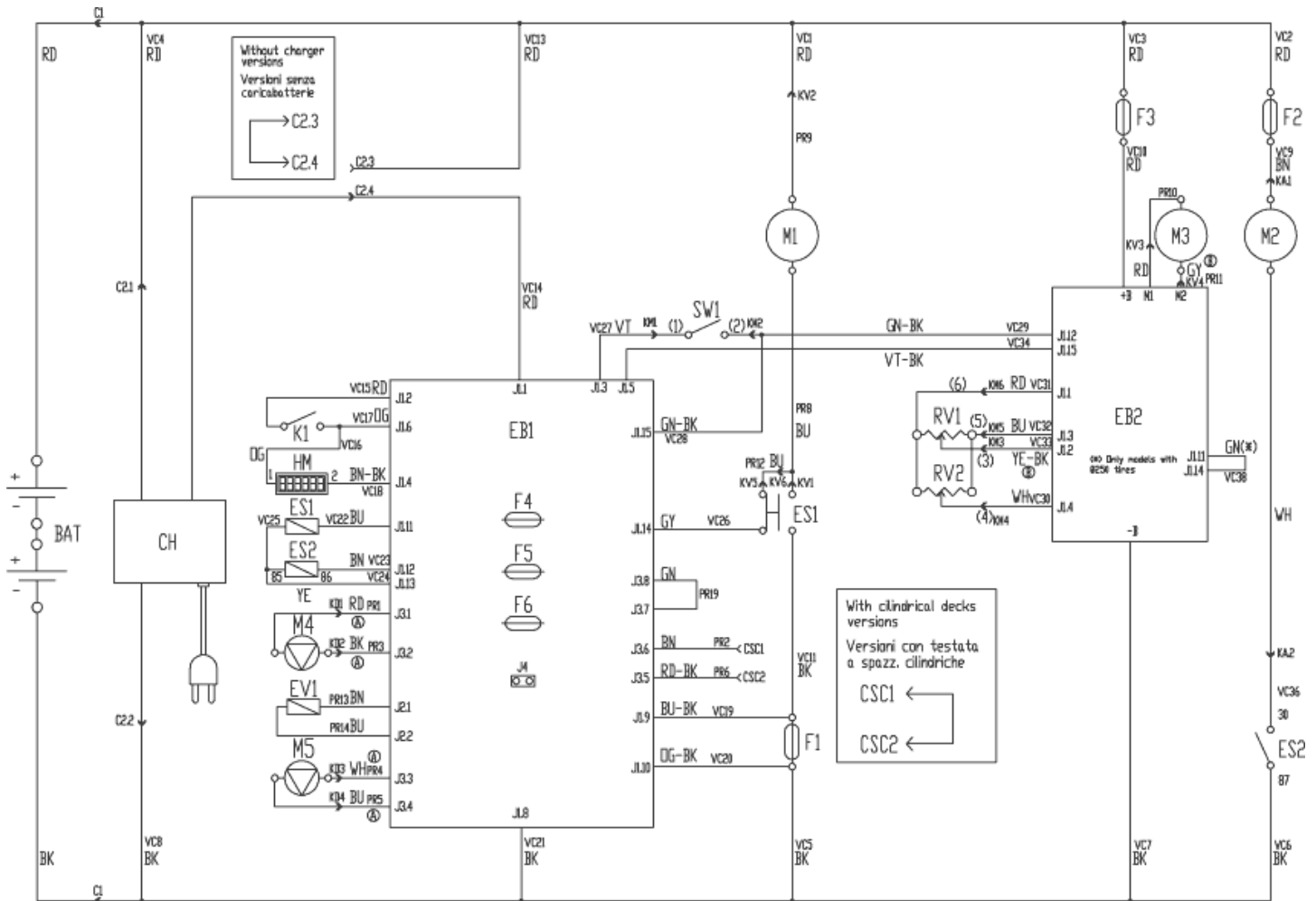
Wiring diagram - BA 451 D - 531 D REV.C

BA451/BA451D/BA531/BA 531D

31-03-2015

ET-Liste-Nr.
E183155A

48



WIRING DIAGRAM - BA 451D / BA 531D

Rev. C

909 6529 000

COMPONENTS / COMPONENTI					
BAT	24V BATTERIES	BATTERIE 24V	K1	KEY SWITCH	CHIAVE
C1	BATTERY CONNECTOR	CONNETTORE BATTERIE	M1	BRUSH MOTOR	MOTORE SPAZZOLA
C2	CHARGER CONNECTOR	CONNETTORE CARICABATTERIE	M2	VACUUM MOTOR	MOTORE ASPIRATORE
CH	BATTERY CHARGER (OPT)	CARICABATTERIE (OPT)	M3	DRIVE MOTOR	MOTORE TRAZIONE
CSC	CILINDRICAL DECK SECONDARY CONNECTOR	CONN. SECONDARIO TESTATA SPAZZ. CILINDRICHE	M4	WATER PUMP (OPT)	POMPA ACQUA (OPT)
EB1	CONTROL PANEL BOARD	SCHEDA ELETTRONICA CONTROLLO FUNZIONI	M5	DETERGENT PUMP (OPT)	POMPA DETERGENTE (OPT)
EB2	DRIVE ELECTRONIC BOARD	SCHEDA ELETTRONICA TRAZIONE	RV1	SPEED POTENTIOMETER	POTENZIOMETRO VELOCITA'
ES1	BRUSH MOTOR ELECTROM. SWITCH	TELERUTTORE MOTORI SPAZZOLE	RV2	MAX SPEED POTENTIOMETER	POTENZIOMETRO VELOCITA' MASSIMA
ES2	VACUUM MOTOR ELECTROM. SWITCH	RELE' ASPIRATORE	SW1	BRUSHES / DRIVE MICROSWITCH	MICROINTERR. CONSENSO SPAZZOLE/TRAZIONE
EV1	ELECTROVALVE	ELETTROVALVOLA			
F1	BRUSH DECK FUSE	FUSIBILE TESTATA SPAZZOLE			
F2	VACUUM MOTOR FUSE	FUSIBILE ASPIRATORE			
F3	DRIVE SYSTEM FUSE	FUSIBILE SISTEMA DI TRAZIONE			
F4	LOW POWER CIRCUIT FUSE	FUSIBILE CIRCUITI DI SEGNALE			
F5	BRUSH RELEASE FUSE	FUSIBILE SGANCIO SPAZZOLE			
F6	PUMP FUSE	FUSIBILE POMPE			
HM	HOURMETER (OPT)	CONTAORE (OPT)			

Wiring diagram - BA 451 D - 531 D REV.C

BA451/BA451D/BA531/BA 531D

31-03-2015

ET-Liste-Nr.

E183155A

49