

SR 1100 ECO

Model:

SR 1100 ECO

SR 1100 ECO LSB

SR 1100 ECO Old



Stückliste Deutsch

06-04-2015

Inhalt

SR 1100 ECO

| | |
|---|-----------|
| TAV. A CHASSIS ZUSAMMENBAU | 3 |
| TAV. B DUST CONTROL FILTER starting from se. nr. 0 | 6 |
| TAV. C DRIVE WHEEL | 8 |
| TAV. D LENKSYSTEM | 10 |
| TAV. E CONTROL PEDALS | 12 |
| TAV. F SEITENBESEN BAUGRUPPEN | 14 |
| TAV. G HAUPTBESEN BAUGRUPPE | 16 |
| TAV. H MOTOR BAUGRUPPE | 18 |
| TAV. I STEUERHEBEL | 20 |
| TAV. J SCHMUTZAUFFANGBEHÄLTER | 22 |
| TAV. K CONTROL PANEL / ELECTRICAL SYSTEM | 24 |
| TAV. L ELECTRICAL DIAGRAM | 26 |

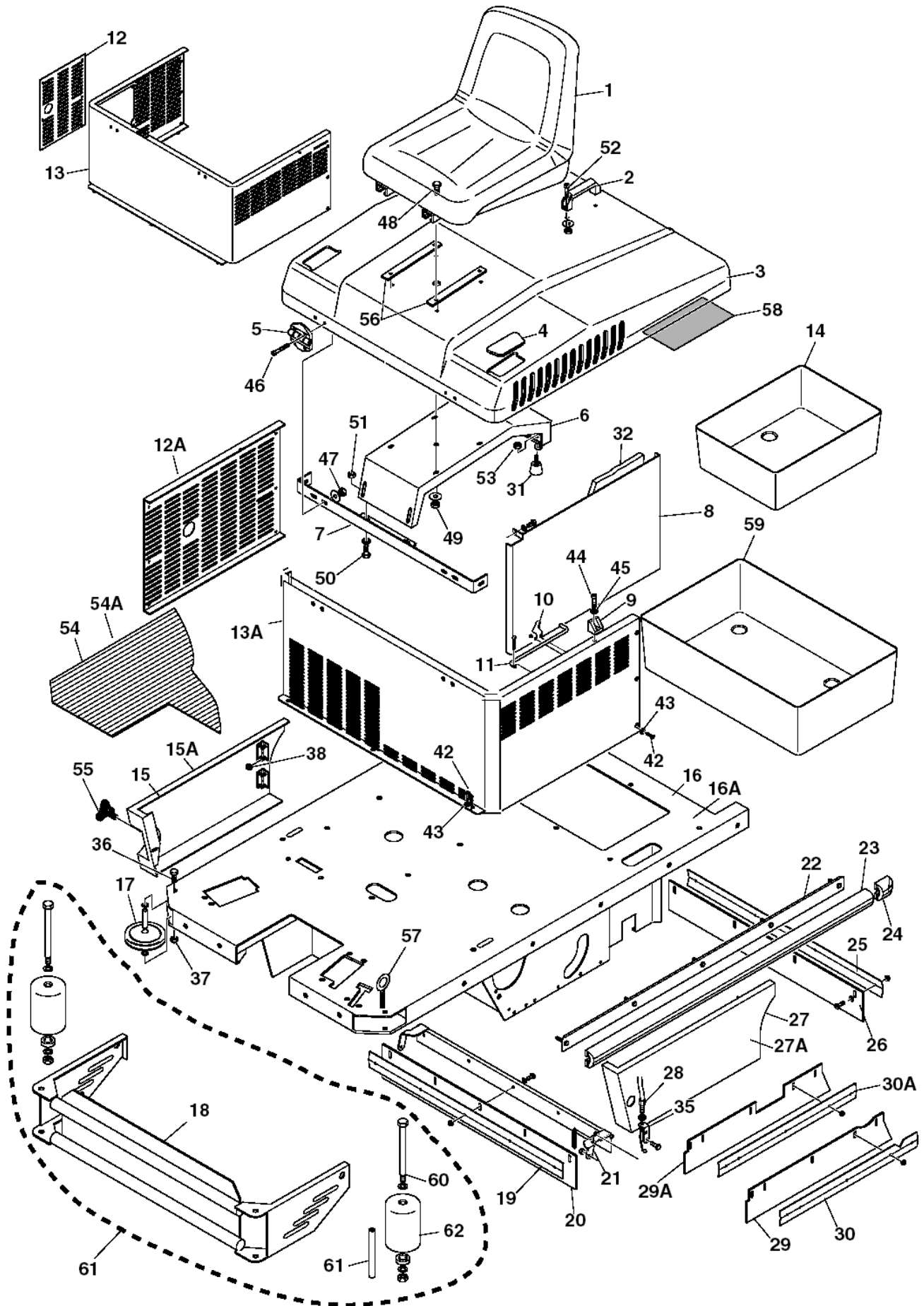
TAV. A CHASSIS ZUSAMMENBAU

SR 1100 ECO

06-04-2015

ET-Liste-Nr. F2611P

3



TAV. A CHASSIS ZUSAMMENBAU

SR 1100 ECO

06-04-2015

ET-Liste-Nr. F2611P

4

| Pos | Artikelnr. | Me | Beschreibung | |
|-----|--------------|----|----------------------------------|----------------------------|
| 1 | 145 1782 000 | 1 | Mikroschalter Sitz | |
| 2 | 145 8461 000 | 1 | Handgriff 475 | Local Part No. : L02.14000 |
| 3 | 145 6106 000 | 1 | SEAT HOLDER BONNET G.7001 | |
| 4 | 145 1997 000 | 1 | CAP BONNET COVER 5110 | |
| 5 | 145 0399 000 | 2 | Scharnier Aluminium | Local Part No. : L02.16080 |
| 6 | 145 1811 000 | 1 | REINFORCEMENT SEAT BONNET | |
| 7 | 145 4778 000 | 1 | STIFFENER BONNET | Local Part No. : F03.38901 |
| 8 | 145 6104 000 | 1 | BULKHEAD ENGINE COMPARTMENT | |
| 9 | 145 9544 000 | 2 | BLOCK | Local Part No. : E02.46301 |
| 10 | 145 2636 000 | 1 | SPRING F SAFETY BAR | Local Part No. : E04.06400 |
| 11 | 145 1953 000 | 1 | ROD BONNET SUPPORT 5110-5120 | |
| 12 | 145 5618 000 | 1 | RIGHT GREY 7001 UNDERCOVE | |
| 13 | 145 6112 000 | 1 | Undercover GR 7001 5110 | Local Part No. : 13 |
| 14 | 145 1856 000 | 1 | Batteriebehälter | Local Part No. : 14 |
| 15 | 145 5558 000 | 1 | Seitenklappe | |
| 16 | 145 5475 000 | 1 | FRAME | |
| 17 | 145 1966 000 | 2 | Abweiserolle Saugfuss 4100 | |
| 18 | 145 5599 000 | 1 | Mounting bracket | |
| 19 | 145 1970 000 | 1 | Klappe vorne | |
| 20 | 145 1969 000 | 1 | Klappe vorne | |
| 21 | 145 1840 000 | 1 | Klappe | |
| 22 | 145 1843 000 | 2 | PLATE SIDE SKIRT 5110 | |
| 23 | 145 4852 000 | 2 | PROTECTION SIDE L1010 | |
| 24 | 145 4640 000 | 2 | TRAILING BUMPER 5110-5120 | |
| 25 | 145 1972 000 | 1 | Spritzgummileiste hinten | |
| 26 | 145 1971 000 | 1 | Klappe hinten | |
| 27 | 145 5559 000 | 1 | Abdeckung | |
| 28 | 145 1975 000 | 1 | Klappe | |
| 29 | 145 5927 000 | 1 | Leiste | |
| 30 | 145 5929 000 | 1 | Seitenklappe | |
| 31 | 145 8053 000 | 2 | VIBRATION-DAMPING M8 | Local Part No. : L02.10400 |
| 35 | 145 5126 000 | 1 | Rahmen | |
| 36 | 33004002 | 2 | SCREW M8X60 HEX HD F/THD ISO4017 | Local Part No. : V02.016 |
| 37 | 33005565 | 2 | Selbstsichernde Mutter M8 | Local Part No. : V13.020 |
| 38 | 33005562 | 8 | Mutter M6 | Local Part No. : V13.019 |
| 42 | 33004576 | 6 | Schraube M6X16 UNI5933 | Local Part No. : V03.004 |
| 44 | 33004346 | 2 | SCREW M6X20 UNI5931 | Local Part No. : V04.007 |
| 45 | 33005913 | 2 | WASHER M6 UNI6592 | Local Part No. : V09.004 |
| 46 | 33004328 | 4 | Schraube M 5 x 16 | Local Part No. : V04.01300 |
| 47 | 33005691 | 4 | Mutter M5 | Local Part No. : V13.003 |
| 48 | 33003996 | 4 | Schraube M8 x 30 | Local Part No. : V02.015 |
| 49 | 33005504 | 4 | NUT HEX M8 UNI5588 | Local Part No. : V13.005 |
| 50 | 33003997 | 2 | Schraube M8X35 UNI5739 | Local Part No. : V02.051 |

TAV. A CHASSIS ZUSAMMENBAU

SR 1100 ECO

06-04-2015

ET-Liste-Nr.

F2611P

5

| Pos | Artikelnr. | Me | Beschreibung | |
|-----|--------------|----|------------------------------------|--------------------------|
| 51 | 33005504 | 2 | NUT HEX M8 UNI5588 | Local Part No. : V13.005 |
| 52 | 33003974 | 2 | Schraube M6X16 UNI5739 | Local Part No. : V02.003 |
| 53 | 33005504 | 2 | NUT HEX M8 UNI5588 | Local Part No. : V13.005 |
| 54 | 145 5474 000 | 1 | MAT BOARD | |
| 55 | 145 5202 000 | 1 | KNOB M 8X40 | |
| 56 | 145 4984 000 | 2 | SUPPORT | |
| 57 | 145 5997 000 | 2 | EYEBOLT M8 UNI2948 | |
| 58 | 145 6129 000 | 1 | DECAL BATTERIES CONNECTION DIAGRAM | |
| 60 | 145 5626 000 | 2 | SCREW M12X180 HEX HD P/THD ISO4014 | |
| 61 | 145 5628 000 | 2 | BUMPING ROLLER PIN | |
| 62 | 145 5627 000 | 2 | BUMPING ROLLER | |
| 63 | 145 6094 000 | 2 | Batterieabdeckung | |
| 65 | 145 6108 000 | 1 | FRONT PLATE FOR COVER | |
| 66 | 145 6098 000 | 1 | PANEL BULKHEAD TRASVERSAL | |
| 67 | 145 6099 000 | 1 | PANEL BULKHEAD LONGITUDINAL | |
| 68 | 145 5718 000 | 1 | Front roller bumper assem | |

TAV. B DUST CONTROL FILTER starting from se.

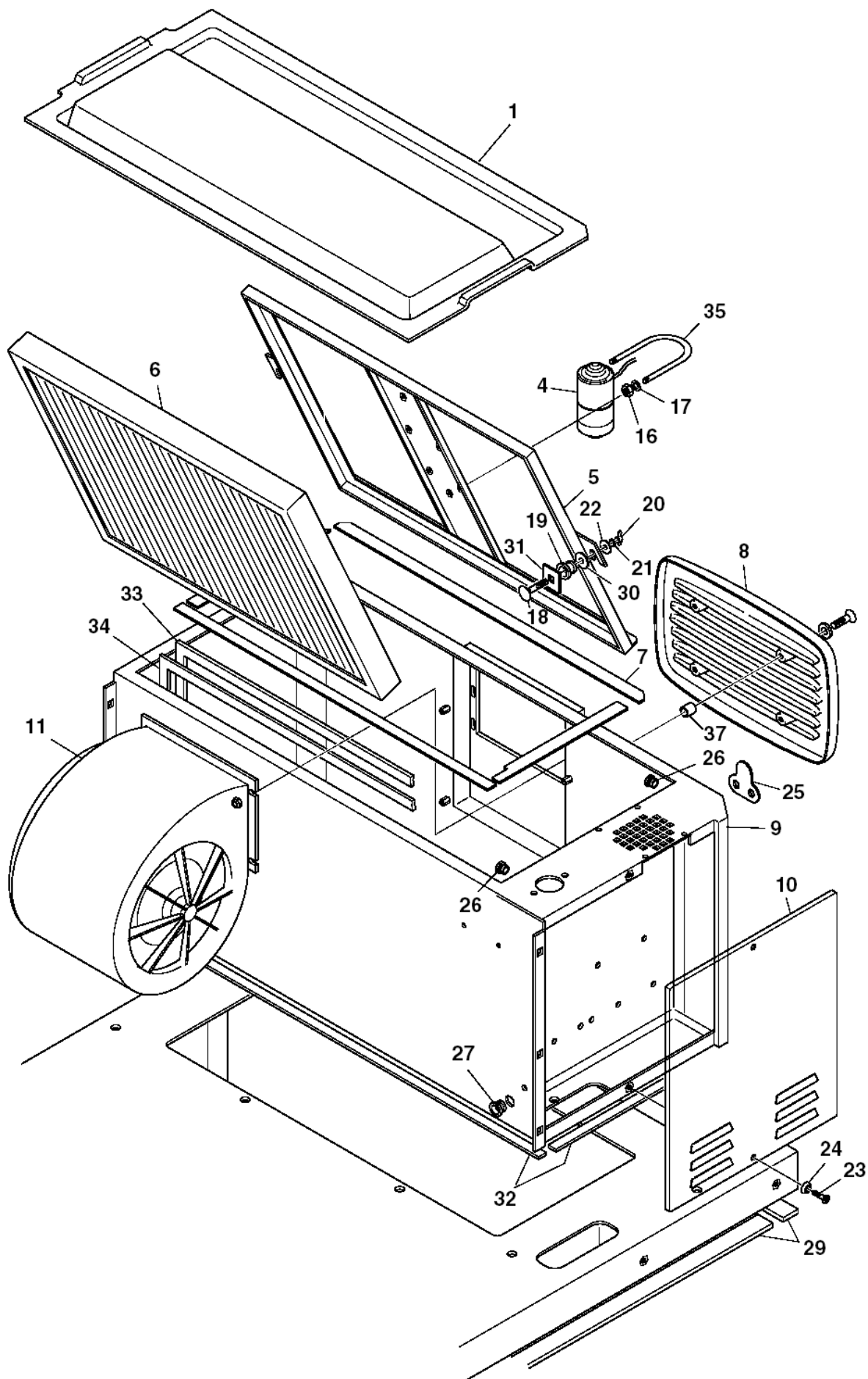
SR 1100 ECO

06-04-2015

ET-Liste-Nr.

F2613P

6



TAV. B DUST CONTROL FILTER starting from se. SR 1100 ECO

06-04-2015

ET-Liste-Nr.

F2613P

7

| Pos | Artikelnr. | Me | Beschreibung |
|-----|--------------|----|--|
| 1 | 146 0054 00 | 1 | Filterdeckel SR 1100 Eco |
| 4 | 145 5539 000 | 1 | MOTOR FILTER SHAKER 90W |
| 5 | 145 5631 000 | 1 | FILTER FIXING FRAME |
| 6 | 145 4954 000 | 1 | Staubfilter Poly ester OPTION |
| 6 | 145 5066 000 | 1 | Staubfilter Papierzu SR 1100 / SR 1200 |
| 6 | 1463523000 | 1 | Papierfilter |
| 7 | 145 5966 000 | 1 | Magnetstreifen 15x2-20x2 |
| 8 | 146 0055 00 | 1 | DOOR SUCTION |
| 9 | 146 0060 00 | 1 | CONTAINER FILTER GREY 7001 |
| 10 | 145 1838 000 | 1 | COVER GREY 7001 ELECT.BOX5110 |
| 11 | 146 0061 00 | 1 | BLOWER CENTRIFUGAL 24V |
| 16 | 33005565 | 4 | Selbstsichernde Mutter M8 |
| 17 | L08300000 | 4 | WASHER 8X24 UNI6592 |
| 19 | 145 9131 000 | 2 | CAP |
| 20 | 33005745 | 2 | NUT WING M8 UNI5448A |
| 21 | 145 4916 000 | 2 | WASHER 5X30X2 |
| 22 | L08300000 | 2 | WASHER 8X24 UNI6592 |
| 23 | 33004565 | 2 | SCREW M5X20 C/SUNK FLAT HD HEX ISO10642 |
| 24 | 145 9122 000 | 2 | WASHER 5.3X14.5X3.2 |
| 25 | 145 9333 000 | 1 | Klammerplatte |
| 26 | 145 4262 000 | 2 | CAP D. 9.5 |
| 27 | 145 4260 000 | 1 | Kappe ø14,7 |
| 30 | 145 4916 000 | 2 | WASHER 5X30X2 |
| 31 | 145 1810 000 | 2 | PLATE FILTER STOP |
| 35 | 1465997000 | 2 | COLLAR METAL U M8 PKD |
| 36 | 145 5539 000 | 1 | MOTOR FILTER SHAKER 90W |
| 37 | 145 1751 000 | 4 | Distanzstück ø10,5 x ø15 x 15 |

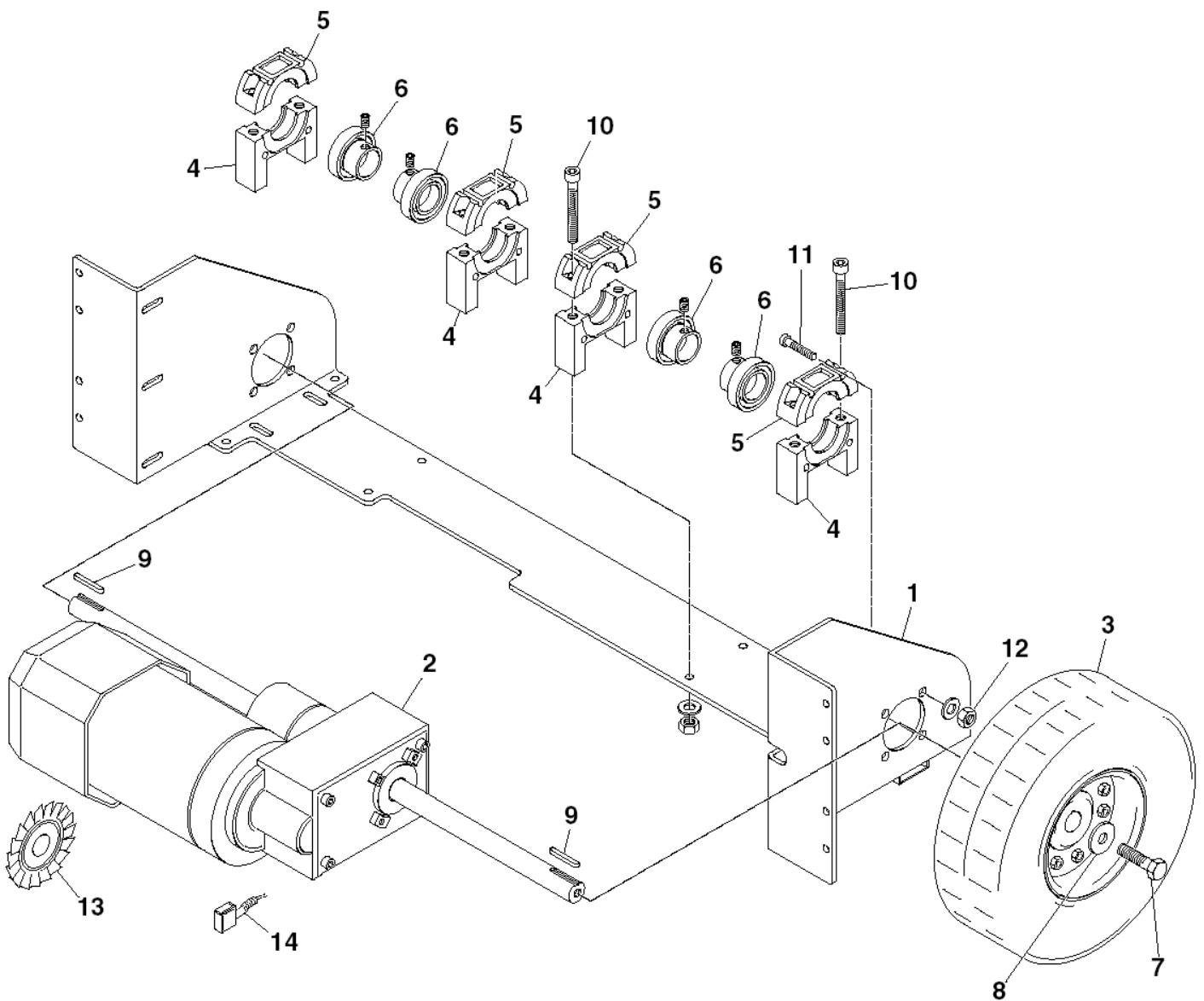
TAV. C DRIVE WHEEL

SR 1100 ECO

06-04-2015

ET-Liste-Nr. F2614P

8



TAV. C DRIVE WHEEL

SR 1100 ECO

06-04-2015

ET-Liste-Nr.

F2614P

9

| Pos | Artikelnr. | Me | Beschreibung |
|-----|--------------|----|-------------------------|
| 1 | 145 5560 000 | 1 | BRIDGE REAR WHEELS |
| 2 | 145 5212 000 | 1 | MOTOR DRIVE 400W 24V |
| 3 | 145 8454 000 | 2 | WHEEL REAR |
| 4 | 145 1976 000 | 4 | Halter |
| 5 | 145 1977 000 | 4 | Halter |
| 6 | 145 1123 000 | 4 | Wälzlager YAT204 |
| 7 | 33005444 | 2 | Schraube M8x20 verzinkt |
| 8 | 145 9171 000 | 2 | Scheibe 8 x 24 |
| 9 | 145 9776 000 | 2 | Passfeder 6 x 6 x 35 |
| 10 | 33004170 | 8 | Schraube M8x80 Uni 5931 |
| 11 | 33003980 | 8 | Schraube M6x45 |
| 12 | 33005562 | 8 | Mutter M6 |
| 14 | L08603949 | 1 | Kohlebürste SET STÜCK |

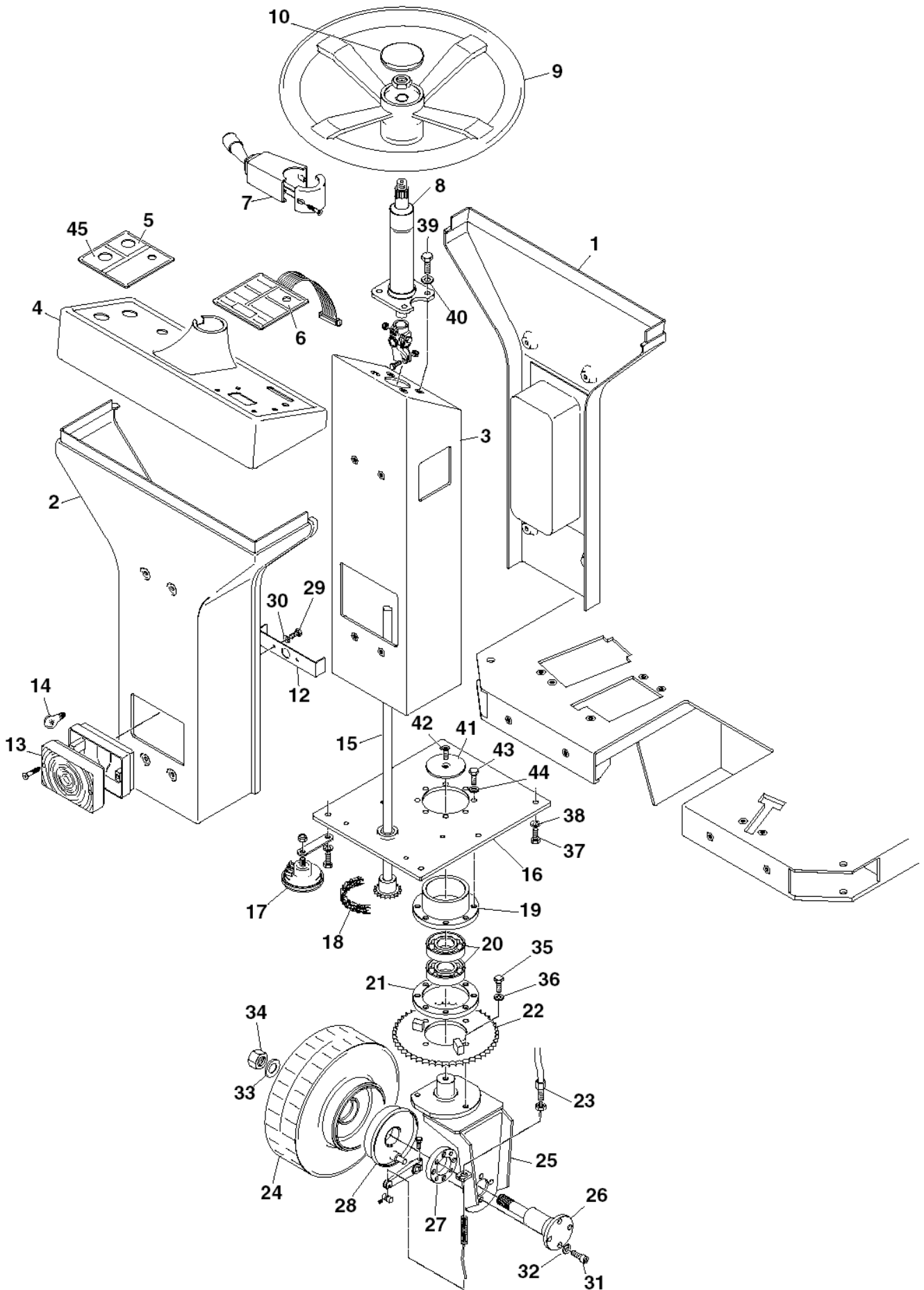
TAV. D LENKSYSTEM

SR 1100 ECO

06-04-2015

ET-Liste-Nr. F2615P

10



TAV. D LENKSYSTEM

SR 1100 ECO

06-04-2015

ET-Liste-Nr. F2615P

11

| Pos | Artikelnr. | Me | Beschreibung |
|-----|--------------|----|--|
| 1 | 145 1796 000 | 1 | COVER REAR COLUMN |
| 2 | 145 1797 000 | 1 | COVER FRONT COLUMN |
| 3 | 145 5551 000 | 1 | COLUMN STEERING |
| 4 | 145 5887 000 | 1 | Control panel |
| 6 | 145 5715 000 | 1 | SILK-SCREEN CONTROL PANEL |
| 7 | 145 5709 000 | 1 | MULTIFUNCTION LEVER |
| 9 | 146 2106 000 | 1 | Lenkrad D. 320 |
| 10 | 145 8753 000 | 1 | Kappe |
| 12 | 145 3483 000 | 1 | BRACKET |
| 13 | 145 8244 000 | 1 | Lampe vorn rechts + links |
| 14 | 145 5518 000 | 1 | Lampe 24V/21W |
| 15 | 145 1793 000 | 1 | SHAFT STEERING |
| 16 | 145 1847 000 | 1 | Lenkradhalter |
| 17 | 145 8881 000 | 1 | Horn 24V |
| 18 | 145 1784 000 | 1 | Kette 3/8 - 68 Glieder |
| 19 | 145 2586 000 | 1 | FLANGE |
| 20 | 145 2357 000 | 2 | Kugellager 6207-2RS |
| 21 | 145 2587 000 | 1 | FLANGE |
| 22 | 145 2714 000 | 1 | Zahnkranz |
| 23 | 145 5476 000 | 1 | Bremskabel |
| 24 | 145 1952 000 | 1 | WHEEL FRONT |
| 25 | 145 4903 000 | 1 | SUPPORT FRONT WHEEL |
| 26 | 145 1748 000 | 1 | PIN FRONT WHEEL |
| 27 | 145 1747 000 | 1 | Radbremse v orne |
| 28 | 1465125000 | 1 | BRAKING SYSTEM KIT |
| 29 | 145 8282 000 | 2 | SCREW M5X12 HEX HD F/THD SS ISO4017 |
| 30 | 33005839 | 2 | U-Scheibe M5 |
| 31 | 33004387 | 4 | SCREW M10X25 CAP HD HEX SOCK ISO4762 |
| 32 | 33005916 | 4 | Unterlagscheibe M10 UNI6592 |
| 33 | 145 4504 000 | 1 | Scheibe 20x43x3 |
| 35 | 33005444 | 3 | Schraube M8x20 verzinkt |
| 36 | 33005842 | 3 | U-Scheibe |
| 37 | 33005445 | 6 | Schraube M8x25 |
| 38 | L08300000 | 6 | WASHER 8X24 UNI6592 |
| 39 | 33004364 | 4 | Schraube, M8x16 UNI5931 |
| 40 | 33005915 | 4 | Unterlagsscheibe 8x16 |
| 41 | 145 2585 000 | 1 | WASHER |
| 42 | 33023206 | 1 | SCREW M8X20 C/SUNK ISO10642 10 PCS SET |
| 43 | 33005445 | 8 | Schraube M8x25 |
| 44 | 33005842 | 8 | U-Scheibe |

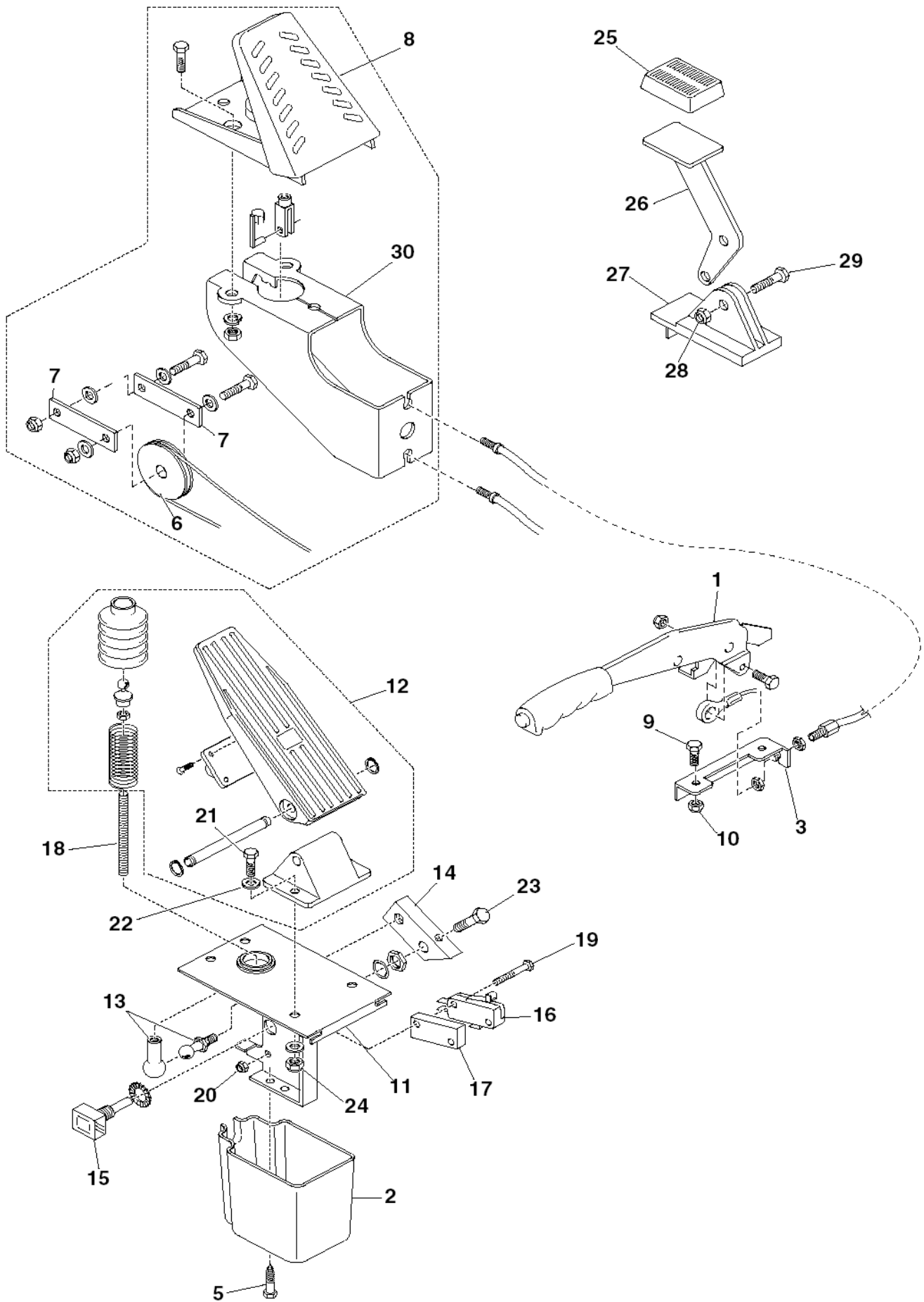
TAV. E CONTROL PEDALS

SR 1100 ECO

06-04-2015

ET-Liste-Nr. F2616P

12



TAV. E CONTROL PEDALS

SR 1100 ECO

06-04-2015

ET-Liste-Nr.

F2616P

13

| Pos | Artikelnr. | Me | Beschreibung |
|-----|--------------|----|----------------------------------|
| 1 | 145 1783 000 | 1 | LEVER PARKING BRAKE |
| 2 | 145 4086 000 | 1 | Pedalauf lage Gummi |
| 3 | 145 1956 000 | 1 | PLATE BRAKE PEDAL |
| 6 | 145 4790 000 | 1 | PULLEY BRAKE |
| 7 | 145 8795 000 | 2 | PLATE F EQUALIZER |
| 8 | 145 4885 000 | 1 | BRAKE PEDAL |
| 9 | 33005444 | 2 | Schraube M8x20 verzinkt |
| 10 | 33005565 | 2 | Selbstsichernde Mutter M8 |
| 11 | 145 1955 000 | 1 | HOLDER CONTROL PEDAL 5110-5120 |
| 12 | 145 3665 000 | 1 | Pedal |
| 13 | 145 8479 000 | 1 | Gelenkkopf M6 |
| 14 | 145 2590 000 | 1 | Verbindungsstift |
| 15 | 145 0283 000 | 1 | Potenzimeter 5KOHM |
| 16 | 145 4799 000 | 1 | Microschalter 5A |
| 17 | 145 4936 000 | 1 | SPACER |
| 18 | 145 4935 000 | 1 | ROD THREADED M6X48MM |
| 19 | 145 1162 000 | 2 | SCREW M3X20 HEX HD F/THD ISO4017 |
| 20 | 33005601 | 2 | NUT SELF L. M3 UNI7474 |
| 21 | 33003972 | 2 | Schraube M6 x 12 |
| 22 | 33005875 | 2 | WASHER M6 UNI6592 SS |
| 23 | 33003950 | 1 | Schraube |
| 24 | 33005562 | 2 | Mutter M6 |
| 25 | 145 8478 000 | 1 | Pedalauf lage Gummi |
| 26 | 145 1841 000 | 1 | PEDAL SKIRT RAIS.DEVICE |
| 27 | 145 1839 000 | 1 | Klappe |
| 28 | 33003975 | 1 | Schraube M6x20 |
| 29 | 33005562 | 1 | Mutter M6 |
| 30 | 145 4865 000 | 1 | BRACKET BRAKE CABLE |

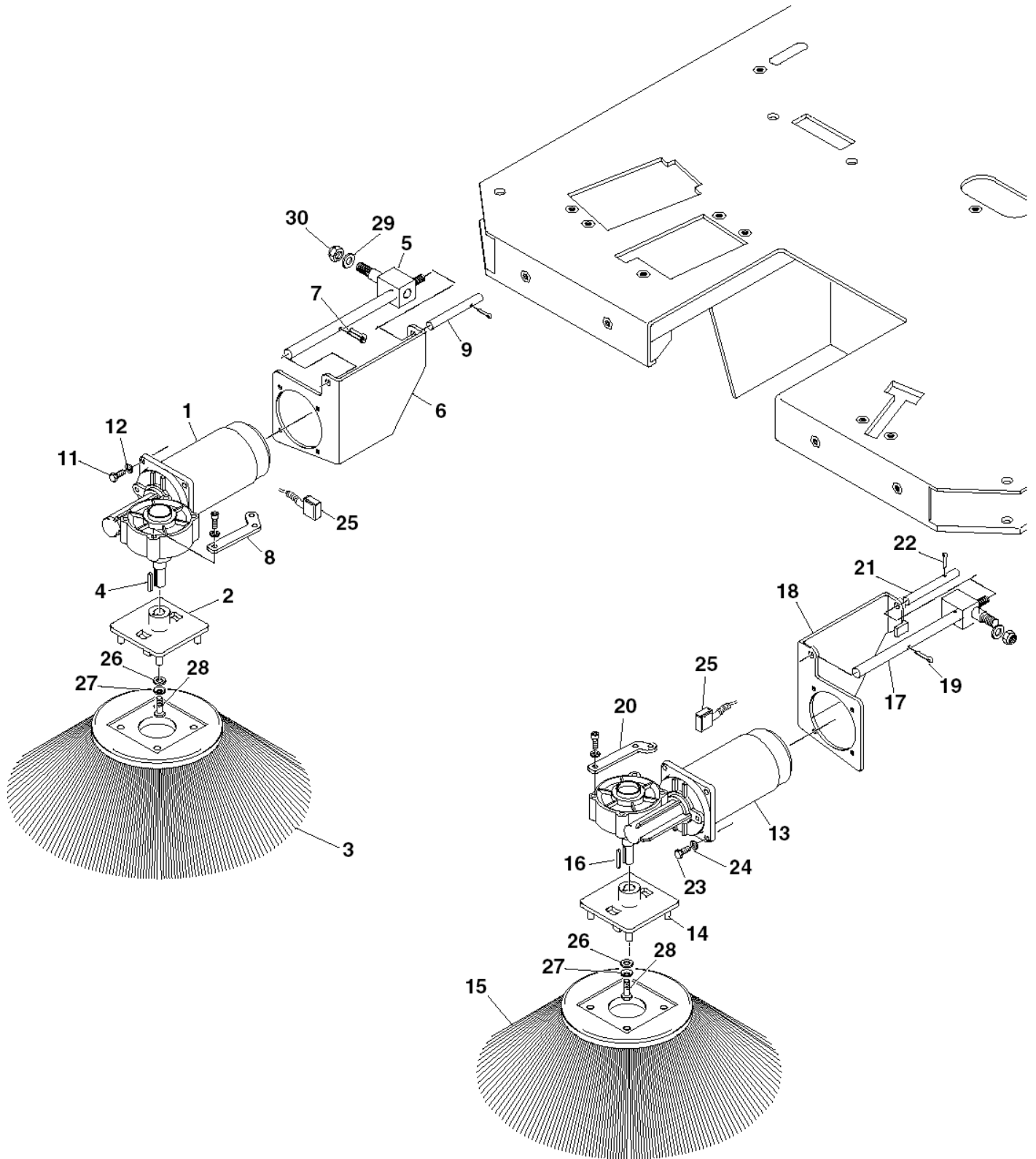
TAV. F SEITENBESEN BAUGRUPPEN

SR 1100 ECO

06-04-2015

ET-Liste-Nr. F2617P

14



TAV. F SEITENBESEN BAUGRUPPEN

SR 1100 ECO

06-04-2015

ET-Liste-Nr.

F2617P

15

| Pos | Artikelnr. | Me | Beschreibung |
|-----|--------------|----|---|
| 1 | 145 5201 000 | 1 | Winkelgetriebe SR 1100ECO |
| 2 | 146 0402 000 | 1 | FLANGE BROOM HOLDING |
| 3 | 145 4976 000 | 1 | Seitenbürste natur Fiber |
| 4 | 1466146000 | 1 | KEY 5X5X25 UNI6604A PKD |
| 5 | 145 1792 000 | 1 | Stift Seitenbürste |
| 6 | 1463150000 | 1 | Aufhängung Rechts |
| 7 | 145 9624 000 | 1 | Split pin 3x20 ISO 1234 |
| 8 | 145 1831 000 | 1 | Seitenbürste |
| 9 | 145 1951 000 | 1 | Stift Seitenbürste |
| 11 | 33003974 | 4 | Schraube M6X16 UNI5739 |
| 12 | 33005913 | 4 | WASHER M6 UNI6592 |
| 13 | 145 5200 000 | 1 | REDUCTION GEARMOTOR 60W 24V RIGHT |
| 14 | 146 0402 000 | 1 | FLANGE BROOM HOLDING |
| 15 | 145 4976 000 | 1 | Seitenbürste natur Fiber |
| 16 | 1466146000 | 1 | KEY 5X5X25 UNI6604A PKD |
| 17 | 145 1792 000 | 1 | Stift Seitenbürste |
| 18 | 1463152000 | 1 | Aufhängung Links |
| 19 | 145 9624 000 | 1 | Split pin 3x20 ISO 1234 |
| 20 | 145 1831 000 | 1 | Seitenbürste |
| 21 | 145 1951 000 | 1 | Stift Seitenbürste |
| 22 | 145 9624 000 | 1 | Split pin 3x20 ISO 1234 |
| 23 | 33003974 | 4 | Schraube M6X16 UNI5739 |
| 24 | 33005913 | 4 | WASHER M6 UNI6592 |
| 25 | 145 5125 000 | 2 | CARBON BRUSH |
| 26 | 1466332000 | 1 | WASHER 6X24X2 UNI6593 10 PCS SET set includes 10 pcs |
| 27 | 145 2644 000 | 2 | Feder 6,2 x 15 x 0,5 |
| 28 | 145 1218 000 | 2 | Schraube M6x16mit Linksgewinde |
| 30 | L08601000 | 1 | Sechskantmutter M12 |

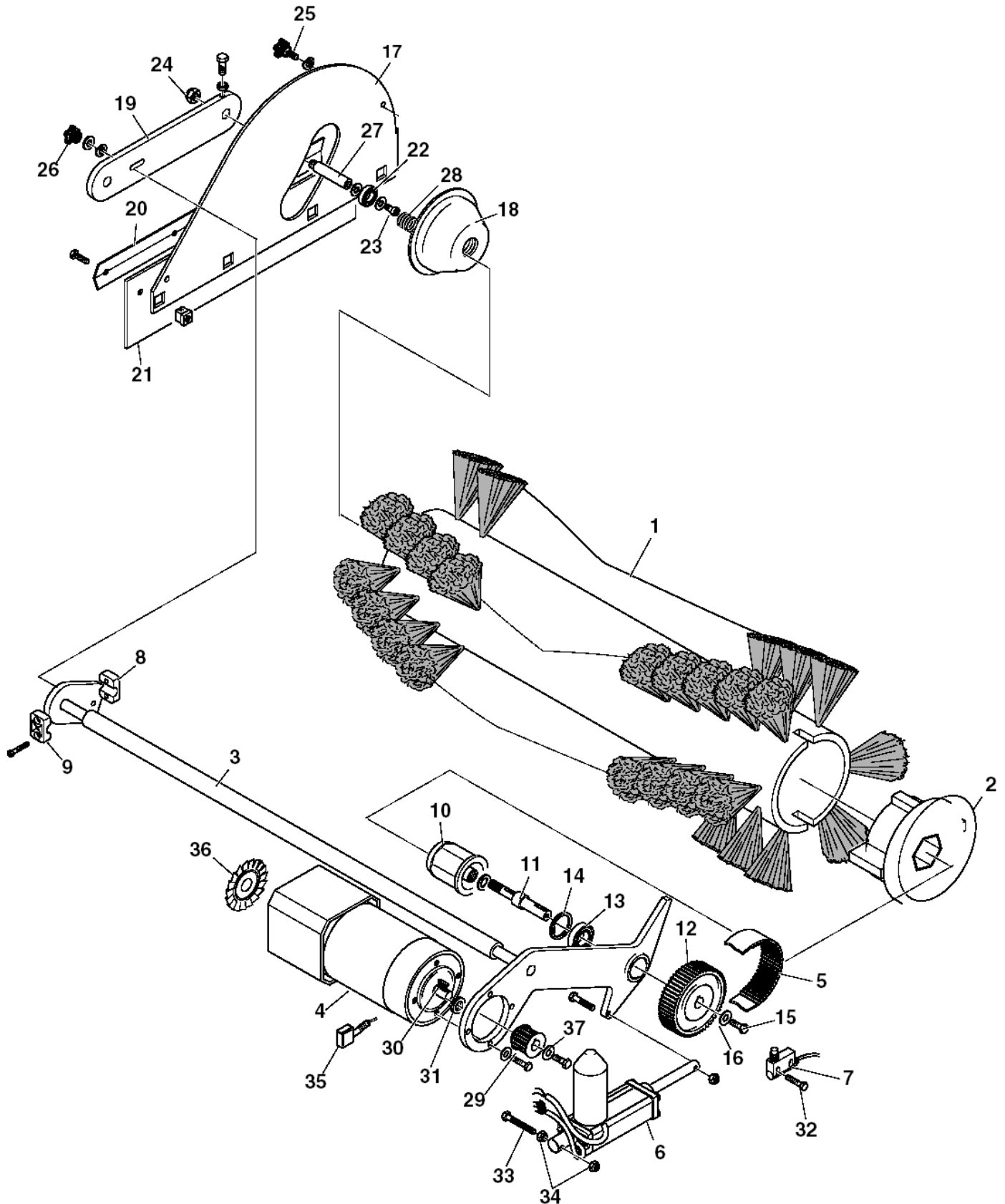
TAV. G HAUPTBESEN BAUGRUPPE

SR 1100 ECO

06-04-2015

ET-Liste-Nr. F2618P

16



TAV. G HAUPTBESEN BAUGRUPPE

SR 1100 ECO

06-04-2015

ET-Liste-Nr.

F2618P

17

| Pos | Artikelnr. | Me | Beschreibung | |
|-----|--------------|----|-------------------------------------|---------------------|
| 1 | 145 4879 000 | 1 | Hauptkehrbürste 300 x 700 | |
| 1 | 145 6080 000 | 1 | Hauptbürste | |
| 2 | 145 5661 000 | 1 | Bürstenklaue rechts | |
| 3 | 145 5574 000 | 1 | SHAFT MAIN BRUSH | |
| 4 | 145 1775 000 | 1 | MOTOR ELECTRIC 500W 24V | |
| 5 | 145 1851 000 | 1 | Riemen | |
| 6 | 145 5573 000 | 1 | Hubmotor 24 V zu SR 1300 | |
| 7 | 145 8854 000 | 1 | Mikroschalter | |
| 8 | 145 1891 000 | 2 | Rohr ø18 | |
| 9 | 33004350 | 4 | SCREW M6X40 CAP HD HEX SOCK ISO4762 | |
| 10 | 1463877000 | 1 | Nabe Kehrwalze | SEE TSB IT 2008-023 |
| 11 | 145 1791 000 | 1 | Bürstenstift zentral | |
| 12 | 145 1850 000 | 1 | Riemenscheibe HTD 60 5M 15 6W | |
| 13 | 145 8196 000 | 2 | KUGELLAGER | |
| 14 | 33006162 | 1 | RING D 32 UNI7437 | |
| 15 | 33003974 | 1 | Schraube M6X16 UNI5739 | |
| 16 | 1466332000 | 1 | WASHER 6X24X2 UNI6593 10 PCS SET | SET INCLUDES 10 PCS |
| 17 | 145 1827 000 | 1 | Platte Kehrwalze | |
| 18 | 145 0269 000 | 1 | Nabe | |
| 19 | 145 1845 000 | 1 | Bürstenhebel zentral | |
| 20 | 145 5929 000 | 1 | Seitenklappe | |
| 21 | 145 5927 000 | 1 | Leiste | |
| 22 | 145 0270 000 | 1 | Kugellager 6001 2RS | |
| 23 | 33004442 | 1 | Schraube M12X60 UNI5931 | |
| 24 | L08601000 | 1 | Sechskantmutter M12 | |
| 25 | 1466153000 | 2 | KNOB LOBED M6X15 PKD | |
| 26 | 145 5035 000 | 1 | Griff | |
| 27 | 145 2662 000 | 1 | Distanzstück ø12 x ø17 x 28 | |
| 28 | 145 0271 000 | 1 | Feder | |
| 29 | 145 1849 000 | 1 | Riemenscheibe HTD 20 5M 15 6F | |
| 30 | 1466146000 | 1 | KEY 5X5X25 UNI6604A PKD | |
| 31 | 145 1950 000 | 1 | Distanzstück ø14 x ø23 x 5 | |
| 32 | 145 0146 000 | 1 | SCREW M4X30 HEX HD F/THD SS ISO4017 | |
| 34 | 33005565 | 2 | Selbstsichernde Mutter M8 | |
| 35 | 1464432000 | 1 | Kohle Kit 4 Stück | |
| 37 | 145 5828 000 | 1 | Distanzstück | |

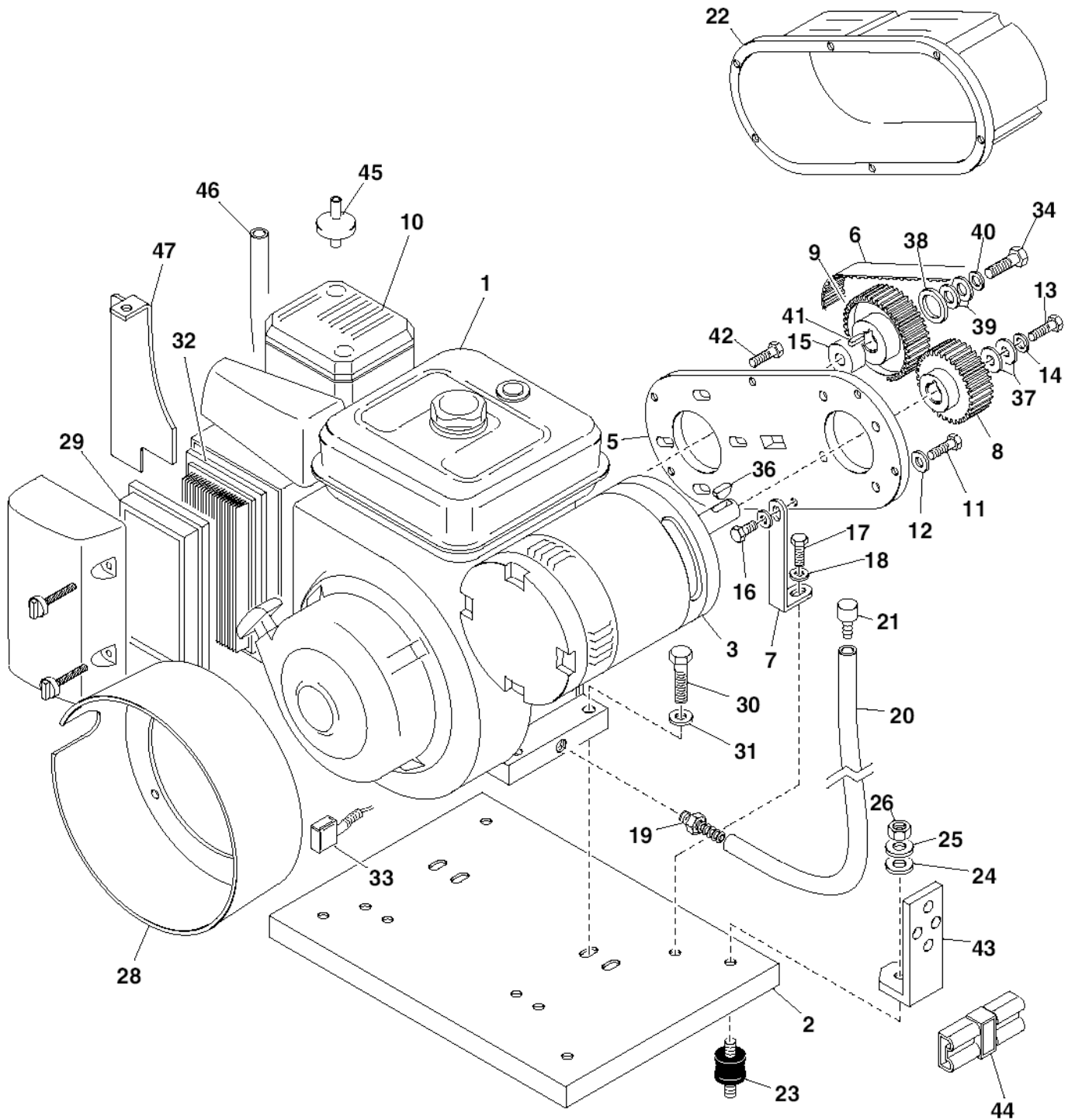
TAV. H MOTOR BAUGRUPPE

SR 1100 ECO

06-04-2015

ET-Liste-Nr. F2619P

18



TAV. H MOTOR BAUGRUPPE

SR 1100 ECO

06-04-2015

ET-Liste-Nr. F-2619P

19

| Pos | Artikelnr. | Me | Beschreibung | |
|-----|--------------|----|--|--|
| 1 | 145 6113 000 | 1 | PETROL ENGINE 4 HP | |
| 2 | 145 6111 000 | 1 | Motortragplatte | |
| 3 | 1466163000 | 1 | DYNAMOTOR 1100W 24V KIT | |
| 5 | 145 6105 000 | 1 | DYNAMOTOR SUPPORT | |
| 6 | 1463791000 | 1 | BELT TRANSMISSION KIT | |
| 7 | 145 6097 000 | 1 | DYNAMOTOR SUPPORT PLATE | |
| 8 | 145 5749 000 | 1 | Riemenscheibe | |
| 9 | 145 5750 000 | 1 | Riemenscheibe | |
| 10 | 145 6119 000 | 1 | MUFFLER EXHAUST | |
| 11 | 33004366 | 4 | Schraube M8X25 UNI5931 | Local Part No. : V04.01200 |
| 12 | L08300000 | 4 | WASHER 8X24 UNI6592 | Local Part No. : V09.020 |
| 13 | 145 5469 000 | 1 | SCREW M6X30 HEX HD ISO4017 SCOTCH-GRIP | |
| 14 | 33005851 | 1 | Unterlegscheibe | Local Part No. : V11.004 |
| 15 | 145 1958 000 | 1 | Distanzstück Riemenscheibe | |
| 16 | 33003975 | 1 | Schraube M6x20 | Local Part No. : V02.004 |
| 17 | 33003974 | 1 | Schraube M6X16 UNI5739 | Local Part No. : V02.003 |
| 18 | 33005913 | 1 | WASHER M6 UNI6592 | Local Part No. : V09.004 |
| 20 | 145 5037 000 | 1 | HOSE OIL | |
| 21 | 145 9220 000 | 1 | Kappe ø10-17 | Local Part No. : M03.003 |
| 22 | 145 6107 000 | 1 | Schutz | |
| 23 | 145 8054 000 | 4 | Schwingungsdämpfer M 8 SH60 | Local Part No. : L02.07900 |
| 24 | L08300000 | 4 | WASHER 8X24 UNI6592 | Local Part No. : V09.020 |
| 25 | 33005842 | 4 | U-Scheibe | Local Part No. : V11.005 |
| 26 | 33005504 | 4 | NUT HEX M8 UNI5588 | Local Part No. : V13.005 |
| 28 | 145 6103 000 | 1 | DEFLECTOR | |
| 29 | 145 6117 000 | 1 | AIR PREFILTER | |
| 30 | 33003998 | 4 | Schraube M8x40 | Local Part No. : V02.011 |
| 31 | 33005915 | 4 | Unterlagsscheibe 8x16 | Local Part No. : V09.005 |
| 32 | 145 6116 000 | 1 | AIR FILTER | |
| 33 | L08603949 | 1 | Kohlebürste SET STÜCK | Local Part No. : A11.00100 |
| 36 | 145 9773 000 | 1 | Passfeder 6 x 6 x 20 | Local Part No. : V17.040 |
| 37 | 1466332000 | 1 | WASHER 6X24X2 UNI6593 10 PCS SET | L. Part: V09.012 - SET INCLUDES 10 PCS |
| 39 | 145 9171 000 | 2 | Scheibe 8 x 24 | |
| 40 | 33005842 | 1 | U-Scheibe | Local Part No. : V11.005 |
| 41 | 145 8011 000 | 1 | Passfeder 3hp | Local Part No. : V17.06100 |
| 42 | 145 5215 000 | 4 | SCREW 5/16X1 | Local Part No. : V02.12860 |
| 43 | 145 4755 000 | 1 | BRACKET BATTERY CONNECTOR5070 | |
| 44 | 9098761000 | 2 | Stecker 50A ROT | |
| 45 | 145 8167 000 | 1 | FILTER PETROL | Local Part No. : B02.02800 |
| 46 | 146 0232 000 | 1 | HOSE D.7x13 L.200MM | Local Part No. : A04.0202 |
| 47 | 145 6110 000 | 1 | DEFLECTOR | |

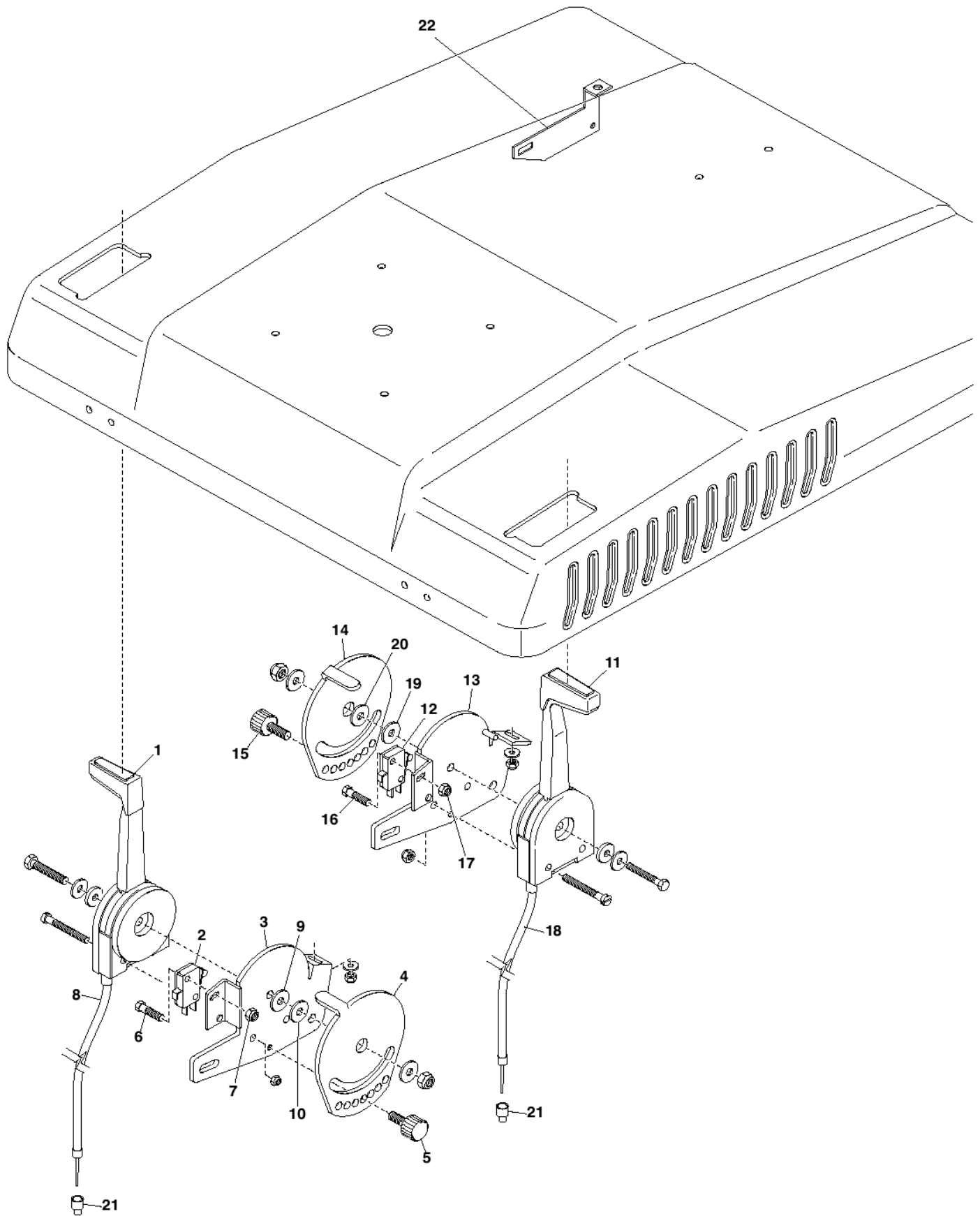
TAV. I STEUERHEBEL

SR 1100 ECO

06-04-2015

ET-Liste-Nr. F26110P

20



TAV. I STEUERHEBEL

SR 1100 ECO

06-04-2015

ET-Liste-Nr. F26110P

21

| Pos | Artikelnr. | Me | Beschreibung |
|-----|--------------|----|----------------------------------|
| 1 | 33003324 | 1 | Hebel Seitenbesen |
| 2 | 145 4799 000 | 1 | Microschalter 5A |
| 3 | 145 1984 000 | 1 | BRACKET LEVER HOLD.RIGHT |
| 4 | 145 1988 000 | 1 | RETAINER RIGHT SIDE BROO |
| 5 | 145 4874 000 | 1 | Handrad M6 x 10 |
| 6 | 145 1162 000 | 2 | SCREW M3X20 HEX HD F/THD ISO4017 |
| 7 | 33005601 | 2 | NUT SELF L. M3 UNI7474 |
| 8 | 145 8933 000 | 1 | CABLE L1120 |
| 9 | 145 1986 000 | 1 | Distanzbuchse |
| 10 | 145 1985 000 | 1 | SPACER 8X12X5 |
| 11 | 33003324 | 1 | Hebel Seitenbesen |
| 12 | 145 4799 000 | 1 | Microschalter 5A |
| 13 | 145 1954 000 | 1 | BRACKET LEFT LEVER HOLDER |
| 14 | 145 1987 000 | 1 | RETAINER LEFT SIDE BROOM |
| 15 | 145 4874 000 | 1 | Handrad M6 x 10 |
| 16 | 145 1162 000 | 2 | SCREW M3X20 HEX HD F/THD ISO4017 |
| 17 | 33005601 | 2 | NUT SELF L. M3 UNI7474 |
| 18 | 145 8933 000 | 1 | CABLE L1120 |
| 19 | 145 1986 000 | 1 | Distanzbuchse |
| 20 | 145 1985 000 | 1 | SPACER 8X12X5 |
| 21 | 145 2390 000 | 1 | Büchse |
| 22 | 145 4909 000 | 1 | BRACKET F SAFETY BAR |

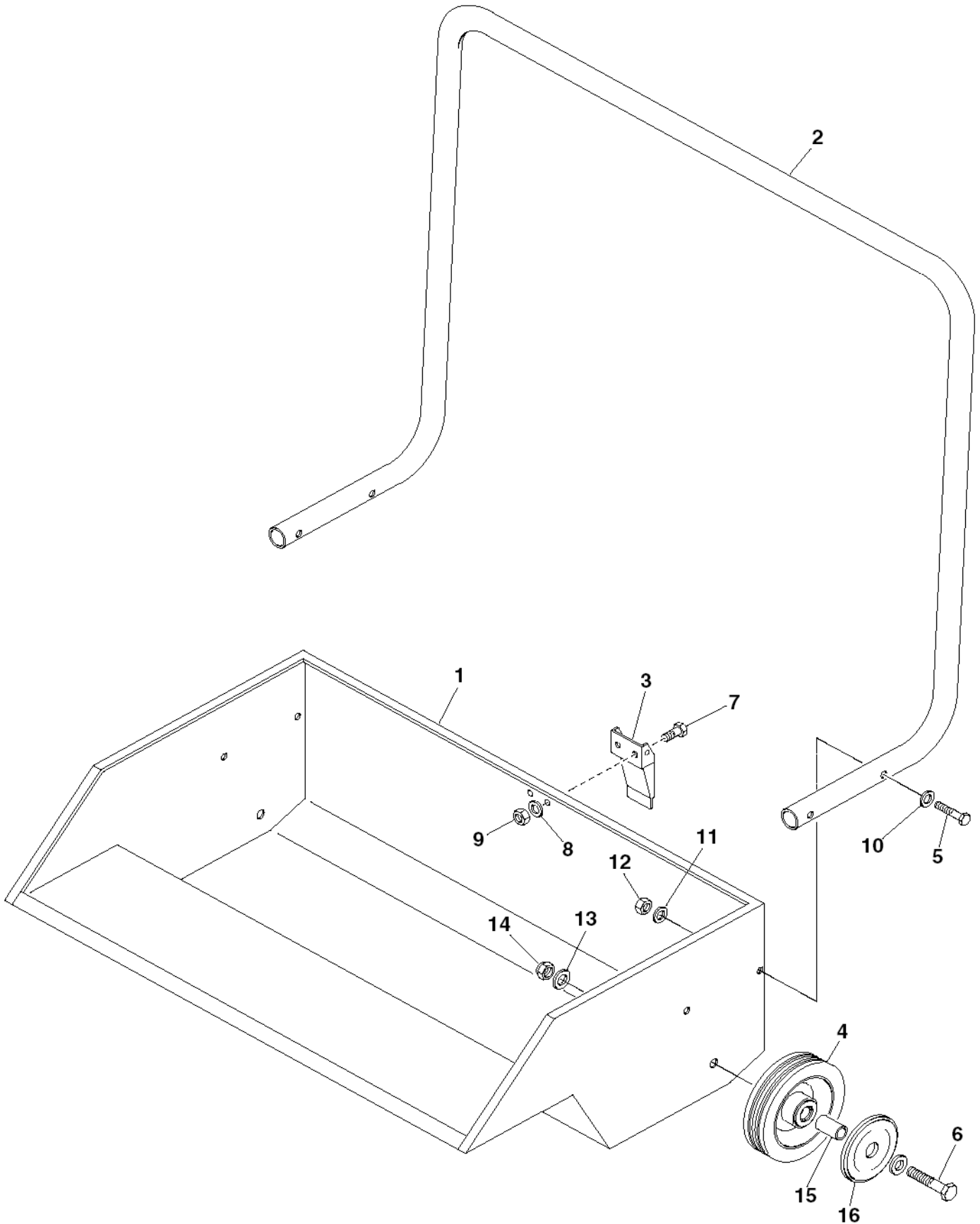
TAV. J SCHMUTZAUFFANGBEHÄLTER

SR 1100 ECO

06-04-2015

ET-Liste-Nr. F26111P

22



TAV. J SCHMUTZAUFFANGBEHÄLTER

SR 1100 ECO

06-04-2015

ET-Liste-Nr. F26111P

23

| Pos | Artikelnr. | Me | Beschreibung |
|-----|--------------|----|--|
| 1 | 145 5122 000 | 1 | CONTAINER WASTE |
| 2 | 145 1830 000 | 1 | HANDLE DIRT CONTAINER 5110 |
| 3 | 145 9330 000 | 1 | Haken |
| 4 | 145 5116 000 | 2 | Rad |
| 5 | 33004351 | 4 | SCREW M6X45 CAP HD HEX SOCK ISO4762 |
| 6 | 33003814 | 2 | SCREW M10X65 HEX HD P/THD ISO4014 |
| 7 | L08812095 | 2 | Schraube M6x16 |
| 8 | L08228600 | 2 | Dichtscheibe 6X18 UNI6592 |
| 9 | 33005562 | 2 | Mutter M6 |
| 10 | 1466332000 | 1 | WASHER 6X24X2 UNI6593 10 PCS SET SET INCLUDES 10 PCS |
| 11 | 33005913 | 4 | WASHER M6 UNI6592 |
| 12 | 33005562 | 4 | Mutter M6 |
| 13 | 145 4507 000 | 2 | U-Scheibe 9x45 ZN |
| 14 | 33005566 | 2 | Selbstsperrende MutterM10 |
| 15 | 145 5118 000 | 2 | Buchse |
| 16 | 145 5117 000 | 2 | PLATE |

TAV. K CONTROL PANEL / ELECTRICAL SYST

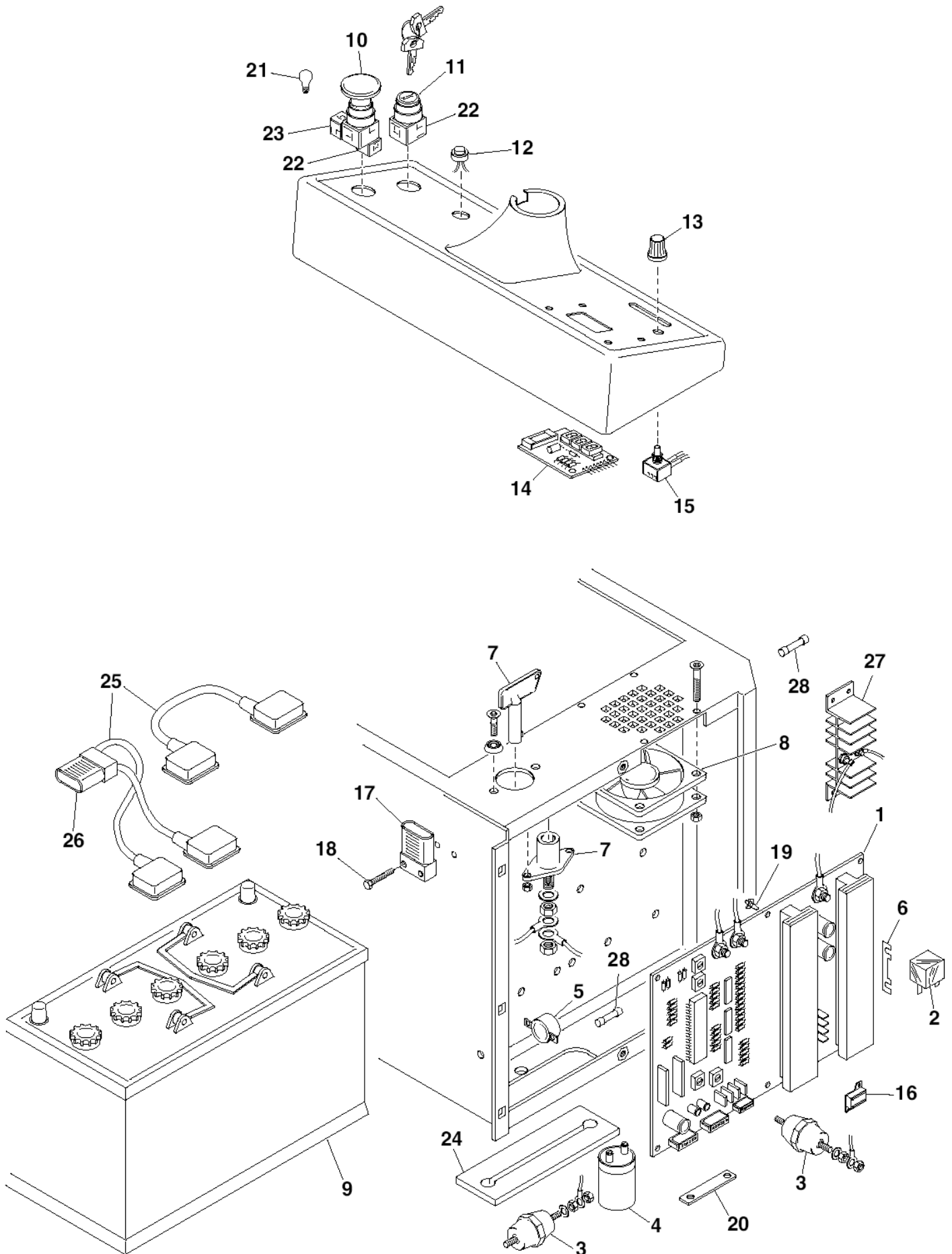
SR 1100 ECO

06-04-2015

ET-Liste-Nr.

F26112P

24



TAV. K CONTROL PANEL / ELECTRICAL SYST

SR 1100 ECO

06-04-2015

ET-Liste-Nr.

F26112P

25

| Pos | Artikelnr. | Me | Beschreibung | |
|-----|--------------|----|----------------------------------|----------------------------|
| 1 | 145 1785 000 | 1 | Karte zu 5110/20 | |
| 2 | 145 8512 000 | 2 | Relais 24V zu 345-355 | Local Part No. : G02.12100 |
| 3 | 145 8874 000 | 2 | INSULATOR M8 | Local Part No. : G02.12200 |
| 4 | 145 0300 000 | 2 | Schalter 24V elektromagnetisch | Local Part No. : G02.10800 |
| 5 | 145 8877 000 | 1 | BUZZER | Local Part No. : G09.00300 |
| 6 | 145 1980 000 | 1 | Sicherung 100A | |
| 7 | 145 1779 000 | 1 | Hauptschalter 5110ECO | |
| 8 | 145 2298 000 | 1 | FAN D.80 24V | Local Part No. : B03.02300 |
| 10 | 146 2905 000 | 1 | Notausschalter | Local Part No. : G05.10200 |
| 11 | 1463729000 | 1 | Schlüsselschalter | Local Part No. : G05.10100 |
| 12 | 145 8885 000 | 1 | Schalter rot | Local Part No. : G05.08200 |
| 13 | 145 4719 000 | 1 | Drehknopf zuPotentiometer | |
| 14 | 145 5703 000 | 1 | Display zu SR 1100 -SR 1300 | |
| 15 | 145 4718 000 | 1 | POTENTIOMETER 10K | |
| 16 | 145 4615 000 | 1 | Widerstand 0.56 OHM | |
| 17 | 145 6063 000 | 1 | Stecker 50A | Local Part No. : G03.01200 |
| 18 | 33003953 | 2 | SCREW M4X30 HEX HD F/THD ISO4017 | Local Part No. : V02.09503 |
| 19 | 145 0516 000 | 6 | SPACER | Local Part No. : L02.13700 |
| 20 | 145 4616 000 | 1 | PLATE ELECT.SWITCH BRIDGE5110 | |
| 21 | 145 1233 000 | 1 | Lampe 24V/3W | Local Part No. : G11.008 |
| 22 | 146 1730 000 | 2 | Kontakt NA | Local Part No. : G03.08100 |
| 23 | 146 1728 000 | 1 | CONTACT, NC. | Local Part No. : G03.08000 |
| 24 | 145 5127 000 | 1 | RUBBER PROTECTION CABLE | |
| 25 | 145 6076 000 | 1 | HARNESS BATTERY | |
| 26 | 145 6063 000 | 1 | Stecker 50A | |
| 27 | 145 5502 000 | 1 | DISSIPATOR W/DIODE.HARNES | |

POSITION 11 INCLUDES SWITCH KEY, PLUS TWO KEYS AND A CONTACT

TAV. L ELECTRICAL DIAGRAM

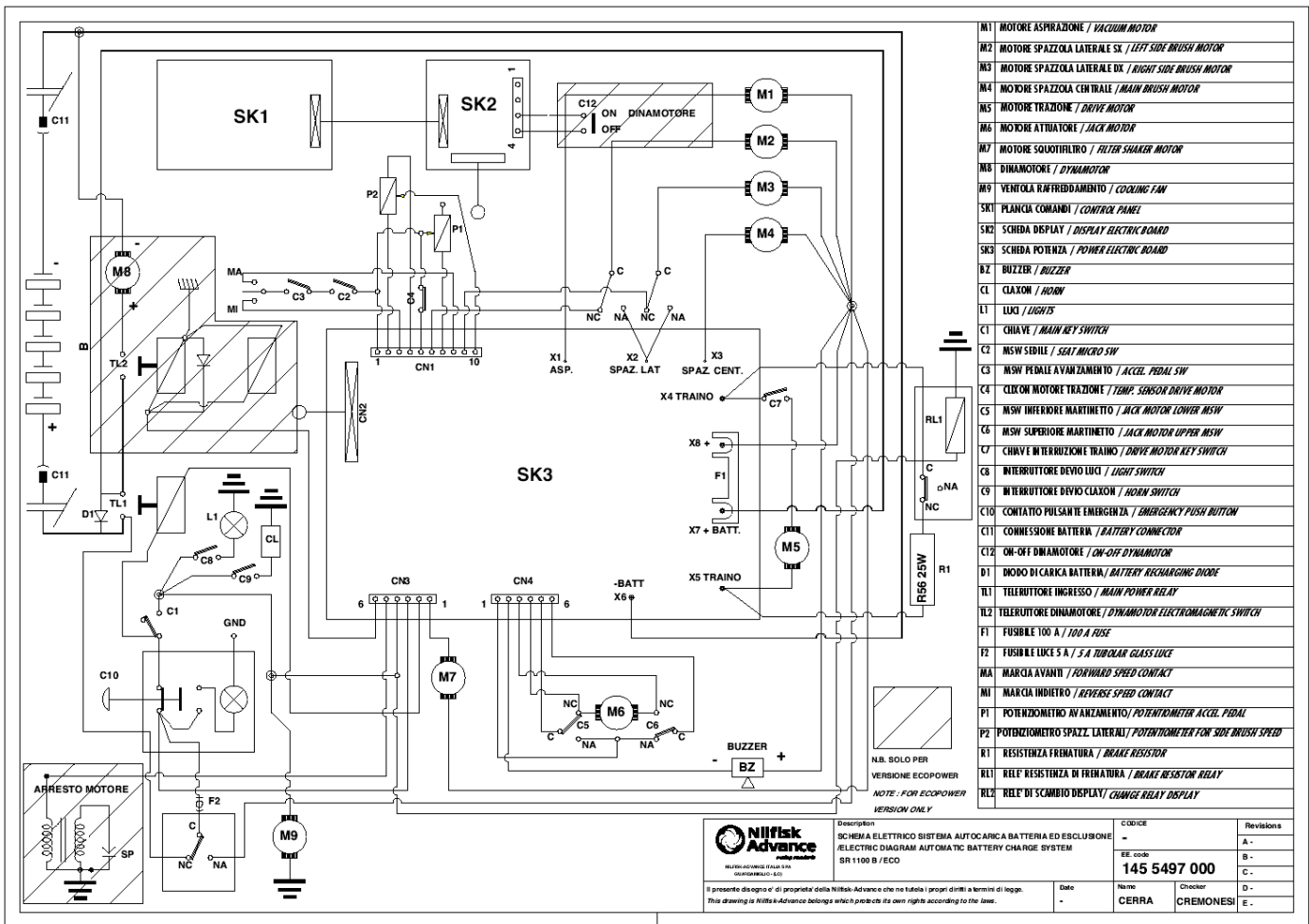
SR 1100 ECO

06-04-2015

ET-Liste-Nr.

F26113P

26



SR 1100 - SR 5110

145 5497 000 SR 1100

TAV. L ELECTRICAL DIAGRAM

SR 1100 ECO

06-04-2015

ET-Liste-Nr.

F26113P

27