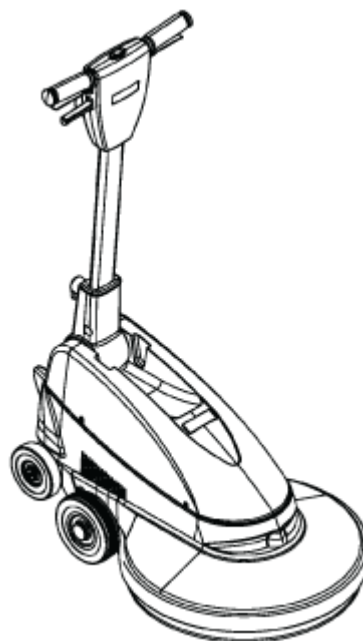


SPINTEC 551 UH

Model:
SPINTEC 551 UH
SPINTEC 551 UH FR



Part List US-English

12-09-2014

Table of Contents

SPINTEC 551 UH

Machine overview	3
Handle system	6
Pads guide and Wiring	9
Recommended spare parts	11

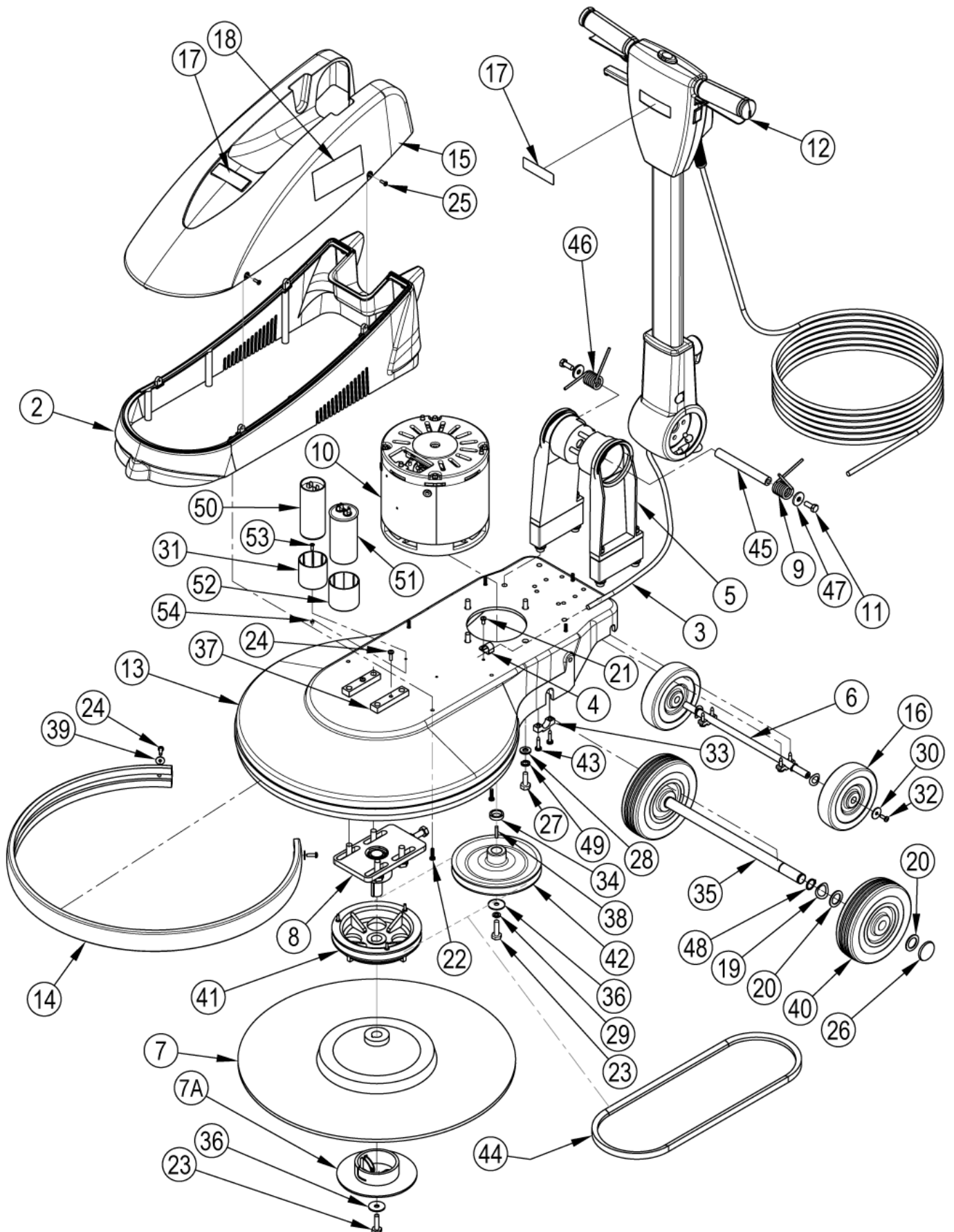
Machine overview

SPINTEC 551 UH

12-09-2014

Part List ID
SPINTEC5502

3



Machine overview

SPINTEC 551 UH

12-09-2014

Part List ID
SPIN I EC550Z

4

Pos	Part no.	Qty	Description	
0	56044601	1	LITERATURE PACK NILFISK BU500	NILFISK
0	56044602	1	LITERATURE PACK NILFISK ALTO SPINTEC 551	ALTO
2		1	NOTE COMMENT	BOTTOM COVER ASM BLUE
3	VF45121B	1	BURNISHER INTERCONNECT CABLE	
4	VV50712	1	CLAMP	
5	VF52213	1	ARM KIT	
6	VF52214	1	AXLE TRANSPORTATION KIT	
7	56925A	1	PAD DRIVER	
8	VF52220	1	DRIVEN SHAFT KIT	
9		1	NOTE COMMENT	SPRING, CCW
10	YLQ36000	1	MOTOR 230/50 1.1 KW 1500 RPM	
11		2	NOTE COMMENT	SCR M8 X 12 HEX
12		1	NOTE COMMENT	SEE HANDLE ASSEMBLY
13	20037A	1	MAINFRAME BLACK BURNISHER	
14	30886A	1	BUMPER	
15		1	NOTE COMMENT	COVER UPPER BLUE
16	VF52017N	2	WHEEL TRANSPORT	
17		2	NOTE COMMENT	LABEL HANDLE NILFI SK ALTO
18		2	NOTE COMMENT	LABEL NILFI SK ALTO SPINTEC 551 UH
19		2	NOTE COMMENT	WASHER BOWED 20 MM
20		2	NOTE COMMENT	WASHER FLAT 20MM
21	VV20509	1	SCREW M5 X 10	
22		7	NOTE COMMENT	SCREW M5 X 20-ST PH
23	GT13018	2	SCREW M8x30	
24	VA13474	7	SCREW M5 X 16	
25		4	NOTE COMMENT	SCREW
26	VA96851	2	WHEEL CAP	
27	VF13497	4	SCREW 3/8-16 HEX	
28	VF13517	4	WASHER PLAIN F10xF20x2.5	
29	VF13519	1	WASHER LOCK M8	
30	VF13666	2	WASHER PLAIN F6	
31	VF52110	2	CLAMP CAPACITOR	
32	VF44012	2	SCREW M6X12.7	
33		2	NOTE COMMENT	WHEEL CLAMP LARGE
34	VF52008	1	SPACER DRIVING PULLEY	
35		1	NOTE COMMENT	AXLE MAIN
36	VF52021	2	WASHER PLAIN F8xF30x5	
37	VF52106	2	MOUTING PLATE	
38	ZD40205	1	KEY MOTOR	
39	VF13474A	2	WASHER PLAIN f5xf16	
40		2	NOTE COMMENT	WHEEL 160MM DIA. GRAY
41	VF52004A	1	DRIVEN PULLEY	
42	VF52009G	1	DRIVING PULLEY	

Machine overview

SPINTEC 551 UH

12-09-2014

Part List ID
SPIN I EC550Z

5

Pos	Part no.	Qty	Description	
43		4	NOTE COMMENT	SCR M5X20 SELF TAPPING CROSS RECESS PAN
44	VF14079	1	VEE BELT 43 INCH	
45		1	NOTE COMMENT	SHAFT
46		1	NOTE COMMENT	SPRING, CCW
47		2	NOTE COMMENT	WASHER 8MM
48		2	NOTE COMMENT	RING-RETAINING EXTERNAL 19MM (.750)
49	VF13518	4	WASHER LOCK f10	
50	VF999849	9	START CAPACITOR 100F/300V	
51	VF32109	1	RUNNING CAPACITOR 20UF/600V	
52	VF74102	1	HOLDER SMALL CAPACITOR	
53	VF13490	1	SCREW M4 x 12	
54	GT13014	1	NUT M4 NYLON INSERT	
7A	57369A	1	RETAINER PAD BOT HALF ONLY	(part of 56925A)
K1	56381552	1	UPPER COVER KIT SPINTEC 551 UH	
K2	56381551	1	LOWER COVER KIT NILFISK BU500	
K2	56381553	1	LOWER COVER KIT SPINTEC 551 UH	
K3	56381554	1	BURNISHER BALANCE SPRING KIT	
K4	56381556	1	BURNISHER MAIN AXLE KIT	
K5	11282A	1	WHEEL KIT	
K6	56381545	1	DECAL KIT NILFISK ALTO SPINTEC 551 UH	ALTO
K6	56381548	1	DECAL KIT ALTO 551 UH	NILFISK-ALTO

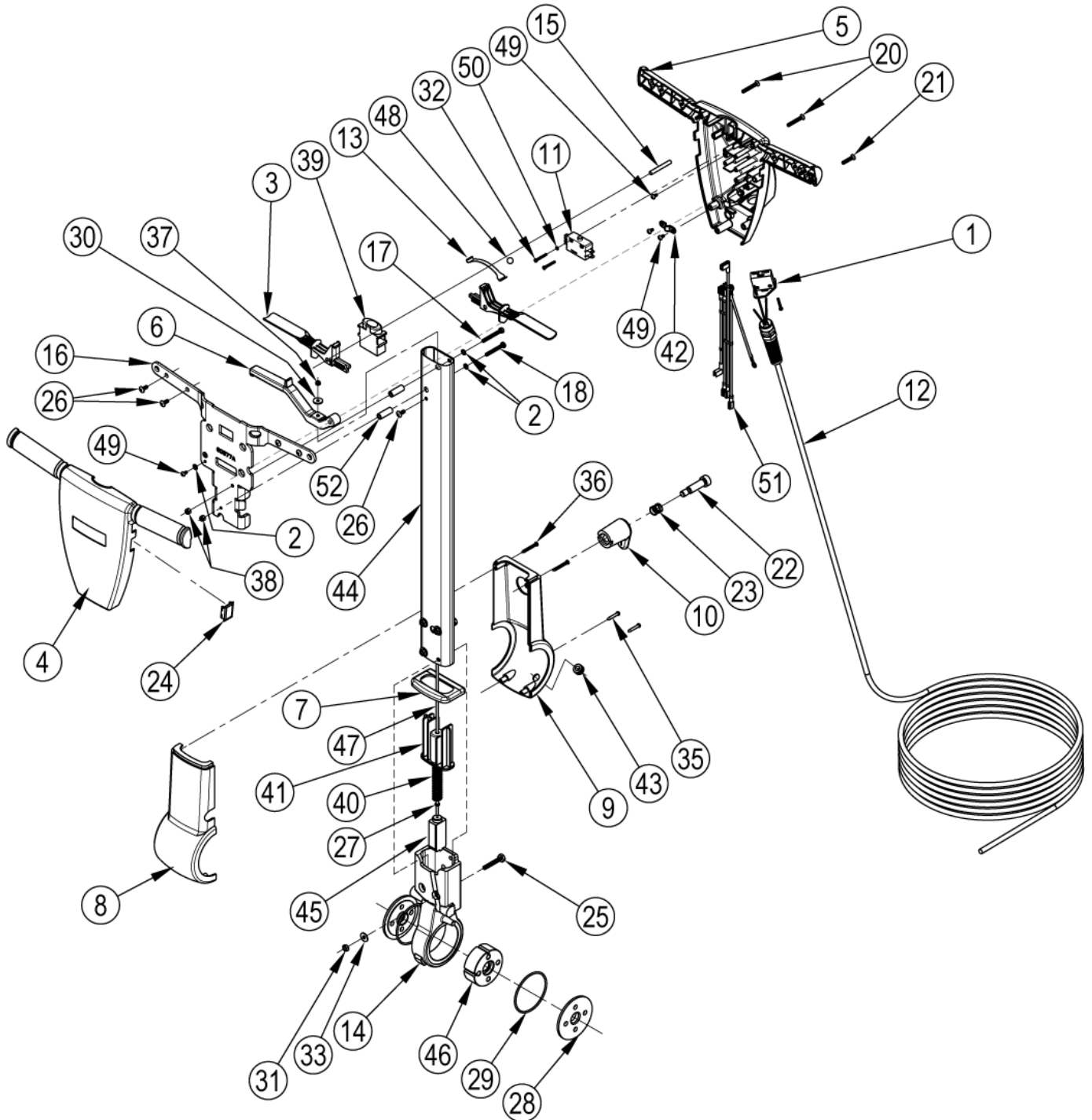
Handle system

SPINTEC 551 UH

12-09-2014

Part List ID
SPINTEC55104

6



Handle system

SPINTEC 551 UH

12-09-2014

Part List ID
SPIN I EC55104

7

Pos	Part no.	Qty	Description
1	VF99012	1	CIRCUIT BREAKER 12 AMP
2		3	NOTE COMMENT M5 WASHER SH1210-00
3		2	NOTE COMMENT LEVER SWITCH
4		1	NOTE COMMENT COVER HANDLE FRONT
5		1	NOTE COMMENT COVER REAR
6		1	NOTE COMMENT LEVER HANDLE ADJUSTMENT
7		1	NOTE COMMENT CAP RUBBER
8		1	NOTE COMMENT COVER FRONT
9		1	NOTE COMMENT COVER REAR
10		1	NOTE COMMENT HOOK CORD
11	40263A	1	SWITCH DPST
12	40268A	1	CORD POWER
13		1	NOTE COMMENT SPRING INTERLOCK BUTTON
14		1	NOTE COMMENT HOUSING GEAR INDEX
15		3	NOTE COMMENT PIN HANDLE SUPPORT
16		1	NOTE COMMENT HANDLE SUPPORT
17		1	NOTE COMMENT SCREW M5 X 43 SS HEX HEAD
18		1	NOTE COMMENT SCREW M5 X 40 SS PAN HEAD
20		4	NOTE COMMENT SCREW M5 X 35 SS FLAT HEAD PHILLIPS
21		2	NOTE COMMENT SCREW M5 X 25 SS FLAT HEAD PHILLIPS
22		1	NOTE COMMENT SCR SHOULDER 12MM X 35MM,
23		1	NOTE COMMENT SPRING 15 MM X 15 MM LONG
24	VF52153	1	HANDLE PLUG
25		4	NOTE COMMENT SCREW M6 X 40 SS HEX HEAD
26		6	NOTE COMMENT Screw M5 X 12 SS Truss Head Phillips
27		1	NOTE COMMENT NUT
28		2	NOTE COMMENT PLATE-GROOVED
29		2	NOTE COMMENT O-RING
30		1	NOTE COMMENT WASHER M4 X 16
31		4	NOTE COMMENT NUT
32		2	NOTE COMMENT SCREW M3 X 25 SS PAN HEAD
33		4	NOTE COMMENT WASHER
34		1	NOTE COMMENT
35		2	NOTE COMMENT SCREW ST4-1.4 X25 PAN HEAD
36		2	NOTE COMMENT SCREW ST4-1.4 X 30 PAN HEAD
37		1	NOTE COMMENT Nut M4 SS Nylon Insert
38		1	NOTE COMMENT Nut Lock M5 SS Hex
39		1	NOTE COMMENT BUTTON INTERLOCK
40		1	NOTE COMMENT SPRING
41		1	NOTE COMMENT HOUSING SPRING BLACK
42		1	NOTE COMMENT CLAMP CORD
43		1	NOTE COMMENT STRAIN RELIEF
44		1	NOTE COMMENT TUBE HANDLE

Handle system

SPINTEC 551 UH

12-09-2014

Part List ID
SPIN I EC55104

8

Pos	Part no.	Qty	Description
45		1	NOTE COMMENT GEAR HANDLE ADJUSTMENT
46		1	NOTE COMMENT GEAR
47		1	NOTE COMMENT Plunger Rod
48		1	NOTE COMMENT BALL INTERLOCK 10MM
49		2	NOTE COMMENT Screw, M4 X 8 Ss Pan Head Phillips
50		2	NOTE COMMENT WASHER M3 EXTERNAL TOOTH
51	56381542	1	SWITCH WIRE ASM
52		1	NOTE COMMENT Support Handle Tube
K1	11269A	1	CORD WRAP KIT
K2	11279A	1	HANDLE COVER KIT
K3	11273A	1	HANDLE SUPPORT KIT
K4	11274A	1	HANDLE SWITCH LEVER KIT
K5	56381557	1	GEAR HOUSING COVER KIT
K6	56381558	1	BURNISHER GEAR SET KIT
K7	56381559	1	GEAR HOUSING AND TUBE KIT
K8	11286A	1	RELEASE SPRING AND ROD KIT

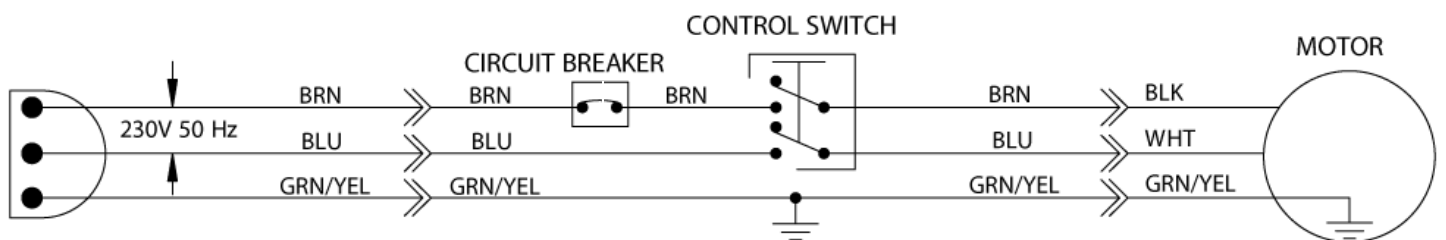
Pads guide and Wiring

SPINTEC 551 UH

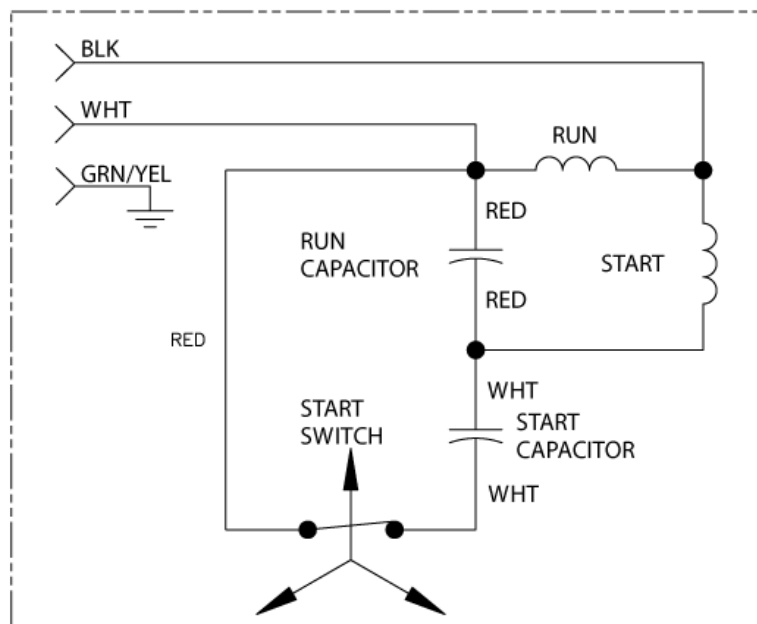
12-09-2014

Part List ID
SPINTEC55106

9



MOTOR DIAGRAM



Pads guide and Wiring

SPINTEC 551 UH

12-09-2014

Part List ID
SPIN I EC55106

10

Pos	Part no.	Qty	Description
	976240	1	PADS CS20 AQUA ULTRA HS CS/5EA
	976327	1	PADS CS20 WHTNATRLBLEND CS/5EA
	976352	1	PADS CS20 TANNATRLBLEND CS/5EA

Natural Blend (Tan): Natural hair and synthetic fiber pad designed for best mark removal. For use on harder finishes or in hightraffic areas. Removes marks and scratches while it polishes.

UHS (Aqua): A superior soft pad that lightly polishes the floor for a reflective appearance.

Natural Blend (White): Natural hair and synthetic fiber pad designed for best gloss. Provides excellent results

Recommended spare parts

SPINTEC 551 UH

12-09-2014

Part List ID
SPINTEC55108

11

No Drawing For Part List

Recommended spare parts

SPINTEC 551 UH

12-09-2014

Part List ID
SPIN I EC55108

12

Pos	Part no.	Qty	Description	
EM	11269A	1	CORD WRAP KIT	HANDLE ASSEMBLY
EM	11273A	1	HANDLE SUPPORT KIT	HANDLE ASSEMBLY
EM	11279A	1	HANDLE COVER KIT	HANDLE ASSEMBLY
EM	11282A	2	WHEEL KIT	BASE SYSTEM
EM	11286A	1	RELEASE SPRING AND ROD KIT	HANDLE ASSEMBLY
EM	40268A	1	CORD POWER	FINAL ASSEMBLY
EM	56381545	1	DECAL KIT NILFISK ALTO SPINTEC 551 UH	BASE SYSTEM
EM	56381548	1	DECAL KIT ALTO 551 UH	BASE SYSTEM
EM	56381552	1	UPPER COVER KIT SPINTEC 551 UH	BASE SYSTEM
EM	56381553	1	LOWER COVER KIT SPINTEC 551 UH	BASE SYSTEM
EM	56381554	1	BURNISHER BALANCE SPRING KIT	BASE SYSTEM
EM	56381557	1	GEAR HOUSING COVER KIT	HANDLE ASSEMBLY
EM	56381558	1	BURNISHER GEAR SET KIT	HANDLE ASSEMBLY
EM	56381559	1	GEAR HOUSING AND TUBE KIT	HANDLE ASSEMBLY
EM	VF52004A	1	DRIVEN PULLEY	BASE SYSTEM
EM	VF52009G	1	DRIVING PULLEY	BASE SYSTEM
EM	VF52017N	2	WHEEL TRANSPORT	BASE SYSTEM
EM	YLQ36000	1	MOTOR 230/50 1.1 KW 1500 RPM	BASE SYSTEM
OM	11274A	1	HANDLE SWITCH LEVER KIT	HANDLE ASSEMBLY
OM	30886A	1	BUMPER	BASE SYSTEM
OM	40263A	1	SWITCH DPST	HANDLE ASSEMBLY
OM	56925A	1	PAD DRIVER	BASE SYSTEM
OM	VF14079	1	VEE BELT 43 INCH	BASE SYSTEM
OM	VF32109	1	RUNNING CAPACITOR 20UF/600V	BASE SYSTEM
OM	VF52220	1	DRIVEN SHAFT KIT	BASE SYSTEM
OM	VF999849	1	START CAPACITOR 100F/300V	BASE SYSTEM