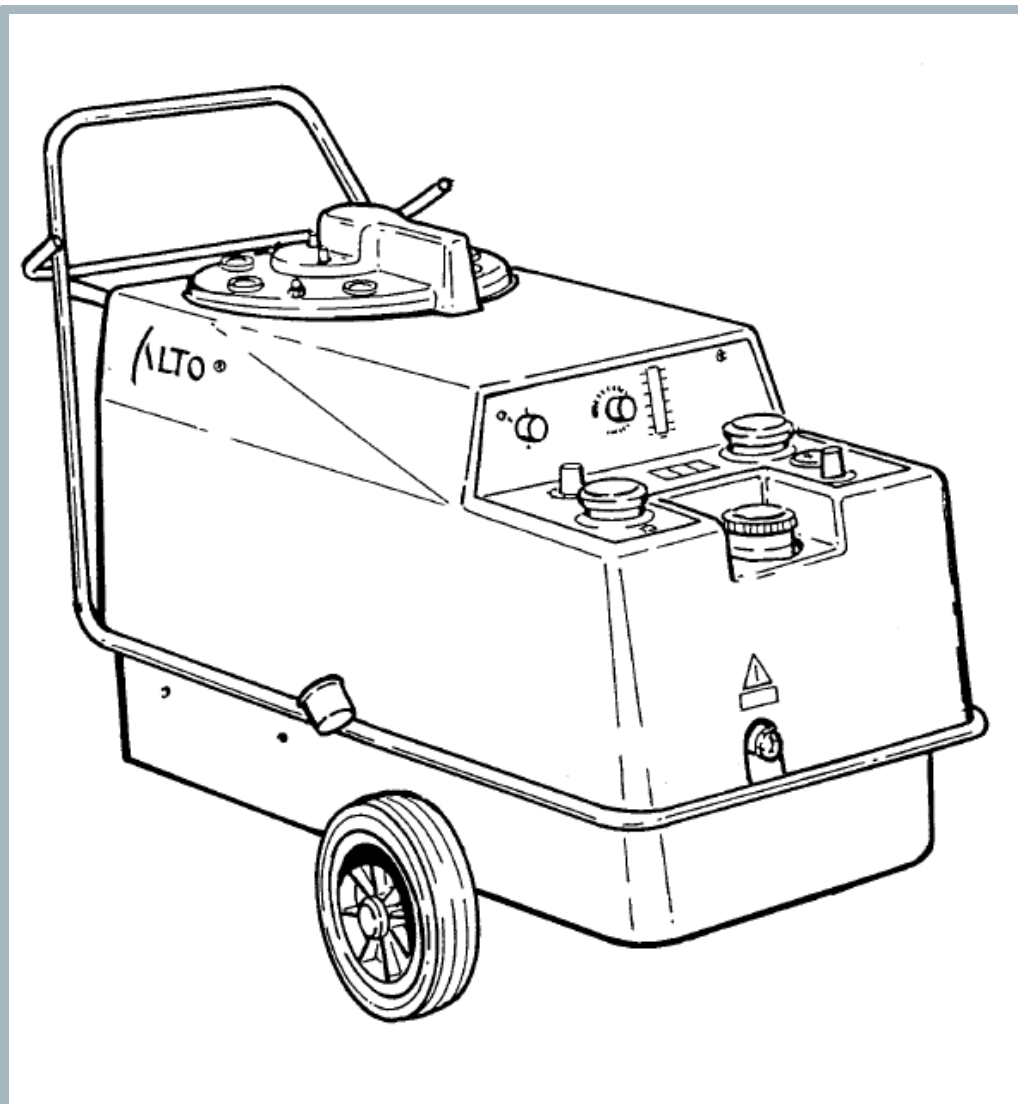


02V (0802V/VA)

Model:
02V



Part List US-English

22-02-2015

Table of Contents

02V (0802V/VA)

Cabinet	3
Chassis (a)	5
Chassis (b)	7
Quick coupling	9
Fuel filter	11
Level switch	13
Machine, mount	15
Pump f. softener	17
Chemical dosing	19
Motor	21
Cylinder block	23
Regulation of water capacity	25
Flow switch, pump	27
Flow control, compl. (a)	29
Flow control, compl. (b)	31
Flow switch	33
Outlet for coil, elbow	35
Outlet for coil, elbow	37
Outlet for coil, elbow, complete f. AUS	39
Outlet for coil, elbow SF	41
Boiler	43
Air distributor	45
Fan	47
Float chamber	49
Control panel	51
Electric parts	53

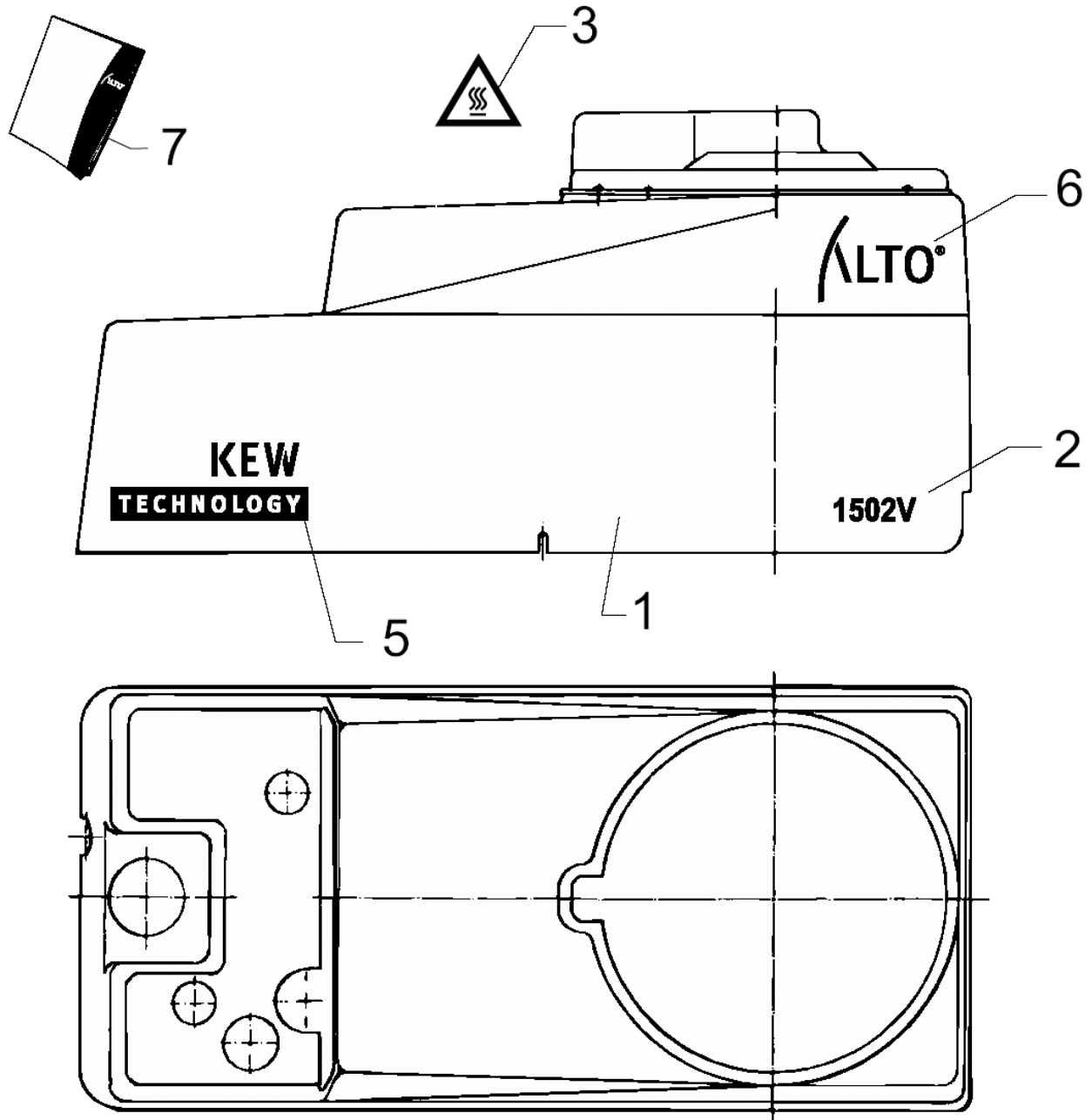
Cabinet

02V (0802V/VA)

22-02-2015

Part List ID 02V02

3



Cabinet

02V (0802VVA)

22-02-2015

Part List ID 02V02

4

Pos	Part no.	Qty	Description
1	6201066	1	CABINET VVA
2	6201144	1	LOGO 1502V (1502V)
3	4210066	1	WARNING LABEL HEAT TRANS
5	6201141	2	LABEL KEW TECHNOLOGY
6	6201140	2	ALTO LOGO

Chassis (a)

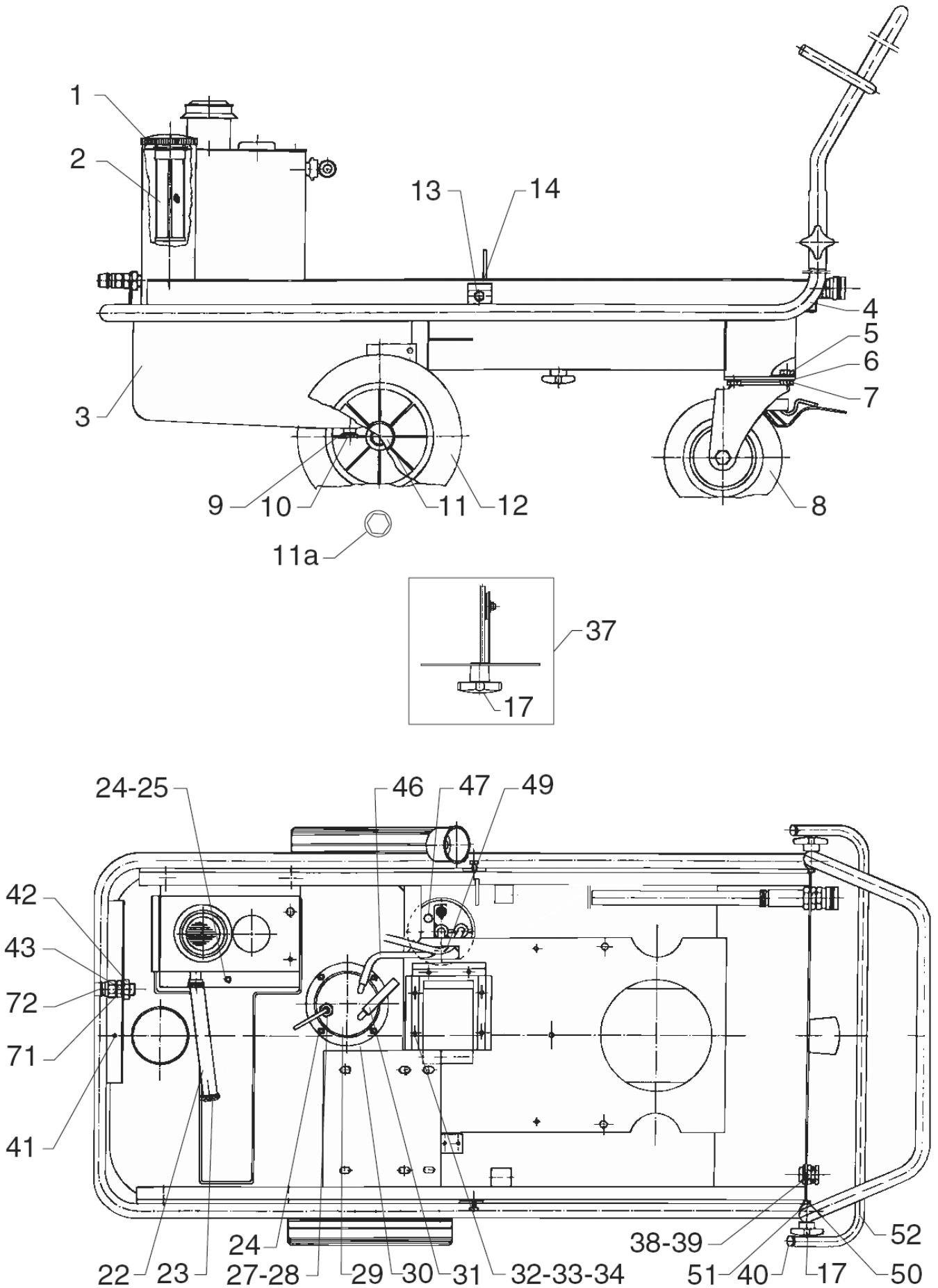
02V (0802VVA)

22-02-2015

Part List ID

02V04

5



Chassis (a)

02V (0802VVA)

22-02-2015

Part List ID
02V04

6

Pos	Part no.	Qty	Description	
1	2011104	1	COVER FOR FUEL TANK	
2	1604222	1	STRAINER	
3	6200203	1	FUEL TANK	
5	1802305	4	SCREW M10X16	
6	1801968	4	TOOTHED LOCK WASHER M10 FZB DIN6798	
7	1800465	4	NUT M10 DIN 934	
8	2005619	1	WHEEL TURNABLE W. BRAKE	
9	3001468	1	FIBRE WASHER	
10	6200529	1	DRAIN SCREW	
11	102004266	2	HUB CAP COMPL.	FROM 01.03.02
11	2004265	2	HUB-CAP D25	UP TO 28.02.02
12	301000041	2	WHEEL Ø250X25 RUBBER	FROM 01.03.02
13	6200145	2	SCREW	
14	1803832	2	SEEGER CIRCLIP	
17	4000279	3	STAR HANDLE	
22	5206230	1	HOSE 5/8 16 MM 10 BAR DIN 73411	L=160 Pls. indicate required lenght when ordering
23	8298	2	HOSE CLIP 16-27	
24	2760	5	NUT M5 ISO 4032 ZN	
25	1804152	1	WASHER M5	
27	1801026	1	LOCK NUT M10 X 1	
28	3000429	1	FIBRE WASHER	
29	6200202	1	COVER FOR LEVEL SWITCH	
30	6240091	1	GASKET LEVEL INDICATOR	
31	5226220	1	HOSE D6X2.5	L=220 Pls. indicate required lenght when ordering
33	1803618	6	TUBULAR RIVET	
34	6200089	1	GASKET FOR BLOWER	
37	6202222	1	AIR INTAKE SHUTTER COMPLETE	
38	3800786	1	Lock nut DIN46320	
39	3800760	1	BRACKET	
40	4600490	2	FERRULE	
41	1803592	7	SHEET METAL SCREW	
42	1803220	1	HEXAGON NUT M18X1.5 ISO 8675 ZN	
43	6200484	1	THREADED CONNECTION	
46	5226220	1	HOSE D6X2.5	L=220 Pls. indicate required lenght when ordering
49	5226220	1	HOSE D6X2.5	L=220 Pls. indicate required lenght when ordering
50	6100123	2	SCREW HEX CAP M6X45	
51	4600559	2	FERRULE 22 DPD 22 01	
52	6200249	1	HANDLE BACK 02V.A2V	
11A	102013548	2	HUB CAP -HEXAGONAL	UP TO 28.02.02

Chassis (b)

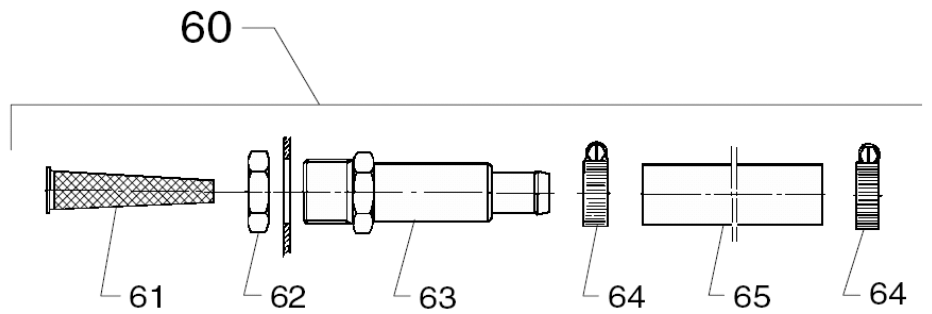
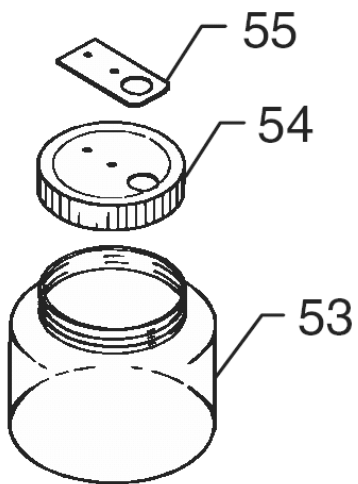
02V (0802VVA)

22-02-2015

Part List ID

02V06

7



Chassis (b)

02V (0802VVA)

22-02-2015

Part List ID 02V06

8

Pos	Part no.	Qty	Description
53	2200467	1	SLUDGE CONTAINER
54	6101425	1	COVER F. SLUDGE CONTAINER
55	6101459	1	CLAMPING IRON
61	6100941	1	FILTER L 7CM
62	1800341	1	LOCK NUT 3/4IN
63	6100937	1	FILTER HOUSING
64	8298	2	HOSE CLIP 16-27
65	5206230	1	HOSE 5/8 16 MM 10 BAR DIN 73411

(L=850) PLS. INDICATE LENGTH IN METRES

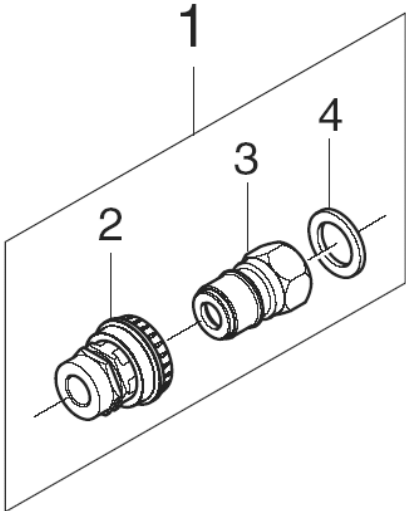
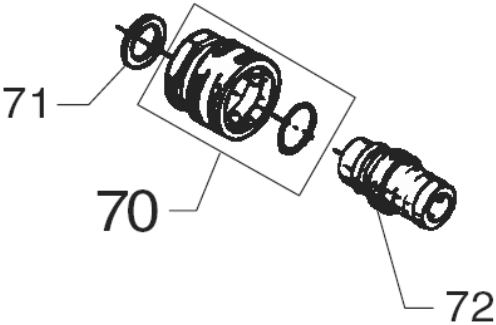
Quick coupling

02V (0802VVA)

22-02-2015

Part List ID 02V08

9



Quick coupling

02V (0802VVA)

22-02-2015

Part List ID

02V08

10

Pos	Part no.	Qty	Description	
1	101119499	1	HIGH PRESSURE COUPLINGS KIT	
2	106402075	1	COUPLING - FEMALE/Q-COUPPL 3/8 INCH	
3	1600493	1	Nippel F. Q-COUPPL. 3/8 INCH	
3	1603101	1	NIPPLE F/QUICK COUPLING 3/8 SS	SS
4	1801075	2	PACKING RING 23.8X17.2X2 3/8 INCH St-NBR	
70	1602945	1	QUICK COUPLING 3/4 W/GASKET	
71	1801075	1	PACKING RING 23.8X17.2X2 3/8 INCH St-NBR	
72	1600659	1	LP NIPPLE F. Q.-COUPLING 3/4IN	
72	1602473	1	MALE COUPLING 5/8IN	5/8"
72	1605955	1	NIPPLE F. QUICK COUPLING L.P	USA

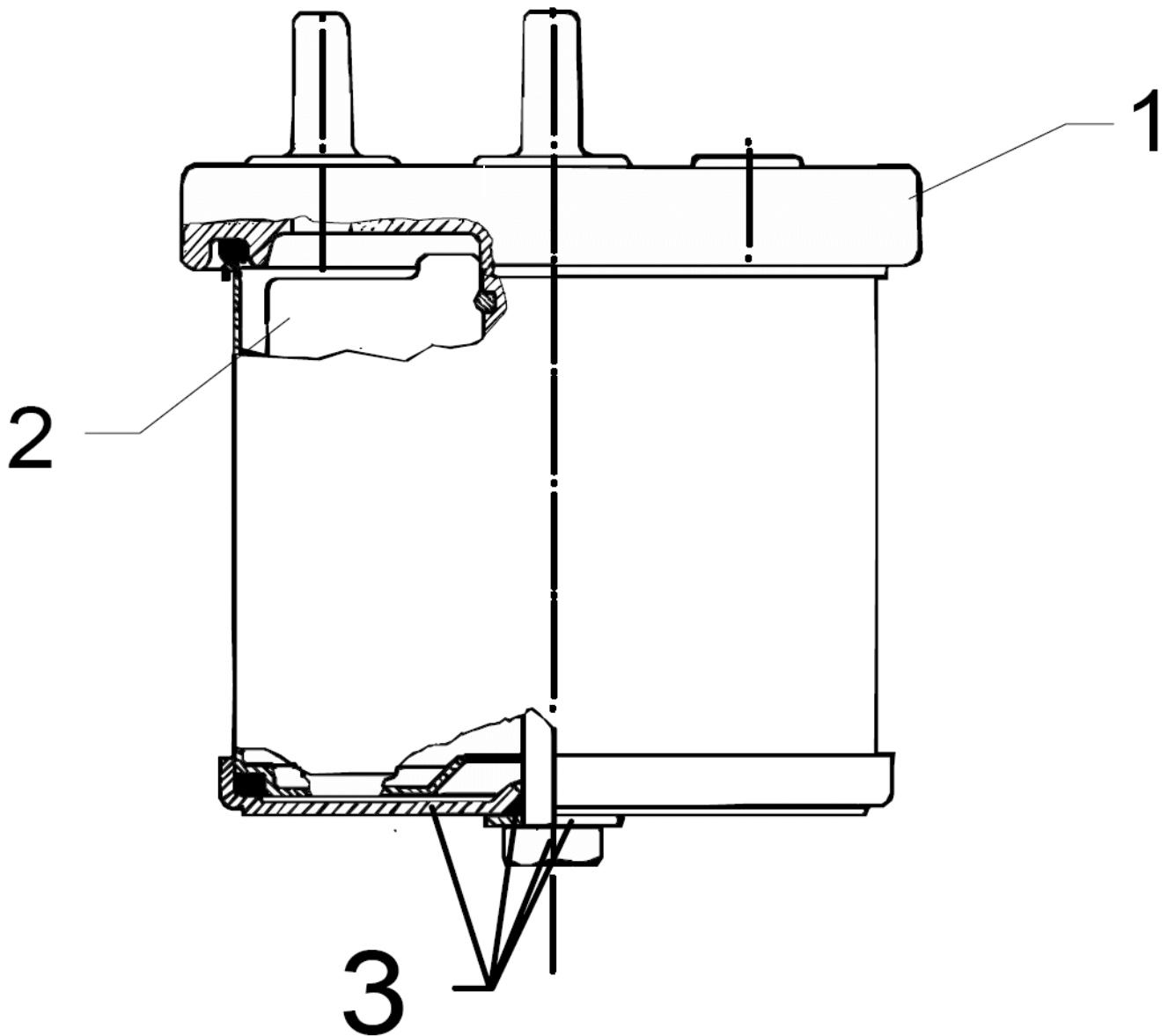
Fuel filter

02V (0802V/VA)

22-02-2015

Part List ID 02V10

11



Fuel filter

02V (0802VVA)

22-02-2015

Part List ID 02V10

12

Pos	Part no.	Qty	Description
1	6200445	1	FILTER CAP
1	6200466	1	FUEL FILTER COMP.
2	1604248	1	OIL FILTER
3	1119301	1	REPKIT.BOTTOM SEC. OIL FILTER
3	6200208	1	LEVEL SWITCH COMP.

Level switch

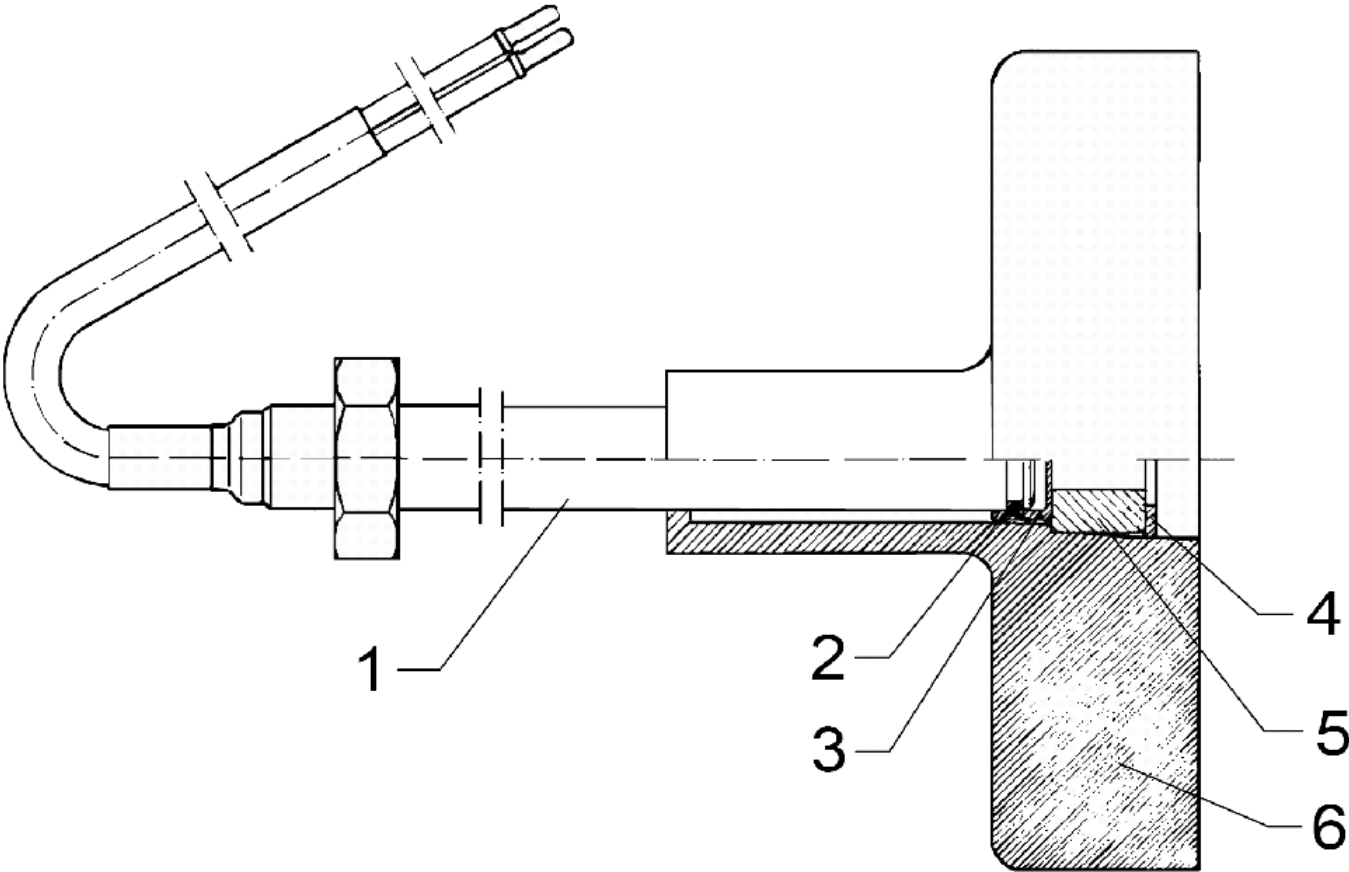
02V (0802V/VA)

22-02-2015

Part List ID

02V12

13



Level switch

02V (0802VVA)

22-02-2015

Part List ID

02V12

14

Pos	Part no.	Qty	Description
1	6200083	1	PIPE WITH REEDSWITCH
2	3000296	1	O-RING 7.1 X 1.6 DIN 3770 NBR70
3	6200067	1	CAP FOR PIPE SOCKET
4	1803634	1	LOCK RING Ø15X1
5	1803485	1	RING MAGNET 14X5.2X9
6	6200060	1	FLOAT

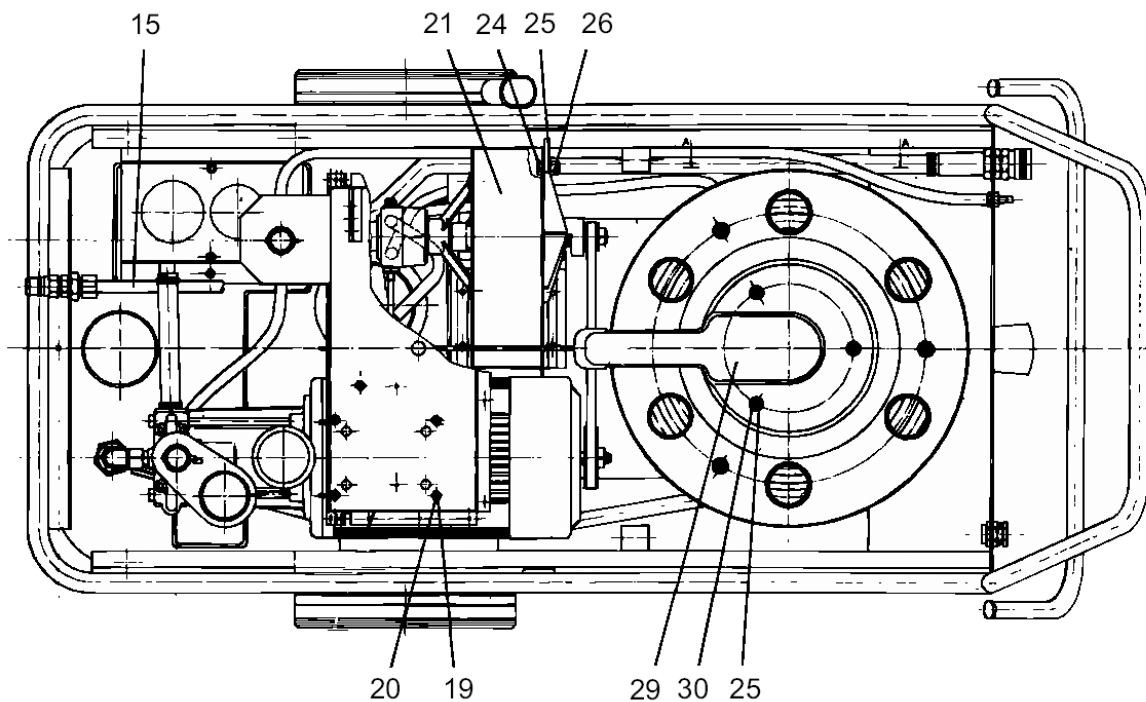
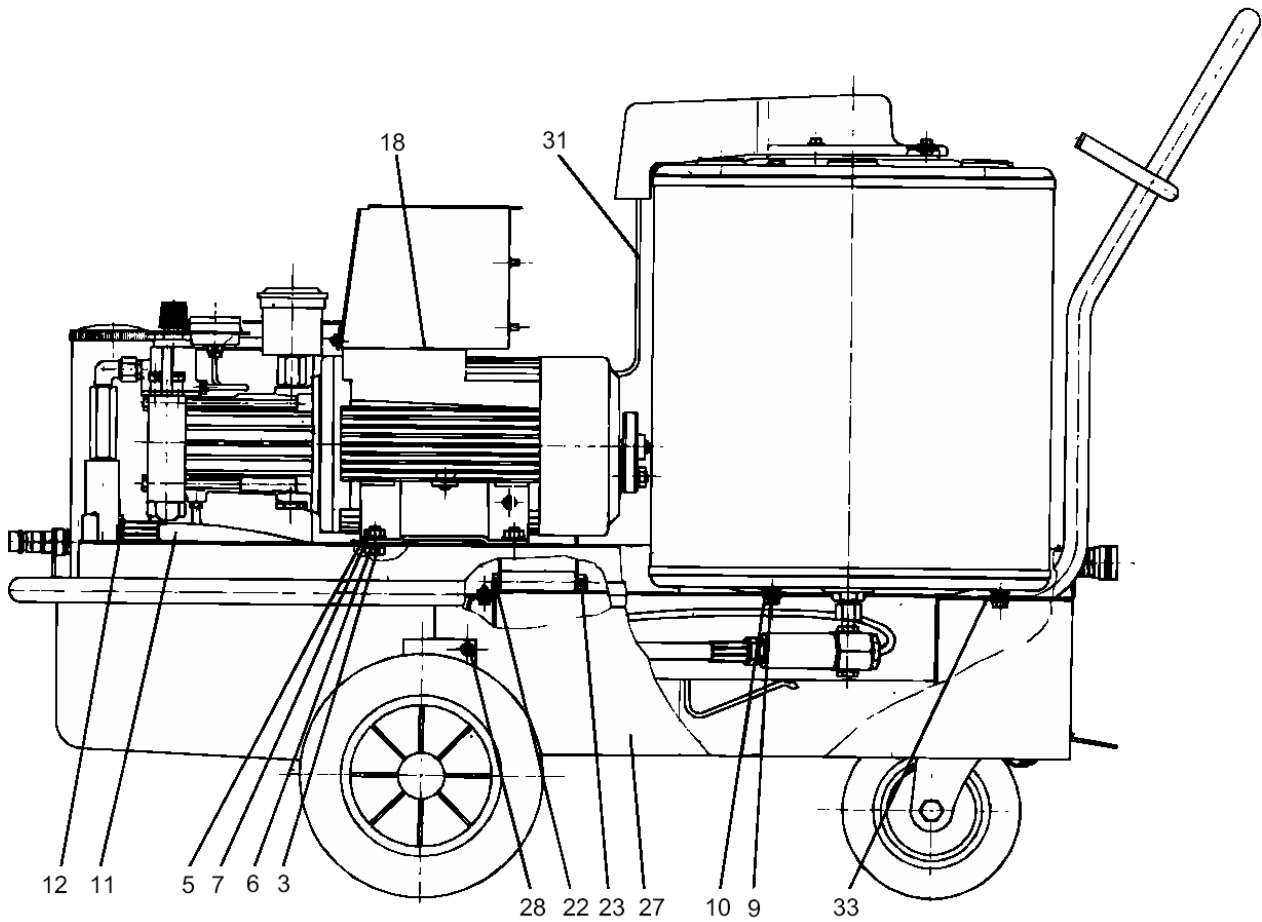
Machine, mount

02V (0802VVA)

22-02-2015

Part List ID 02V14

15



Machine, mount

02V (0802V/VA)

22-02-2015

Part List ID
02V14

16

Pos	Part no.	Qty	Description	
3	1800150	4	SCREW M8X30	(2602V/VA)
3	1800762	4	SCREW HEX CAP M10X20	(0802V/VA - 1502V/VA)
5	1800465	4	NUT M10 DIN 934	(0802V/VA - 1502V/VA)
5	2758	4	HEXAGON NUT M8	(2602V/VA)
6	1801968	4	TOOTHED LOCK WASHER M10 FZB DIN6798	(0802V/VA - 1502V/VA)
6	1810274	4	WASHER M8 - DIN 6798J	(2602V/VA)
7	1800317	4	WASHER 10.5X22.0X1.25 A ISO7090 ZN	(0802V/VA - 1502V/VA)
7	1800796	4	WASHER M8	(2602V/VA)
9	1800465	3	NUT M10 DIN 934	
10	1800796	3	WASHER M8	
11	6200500	1	INTERNAL HOSE 645	
12	1803493	2	PACKING RING Ø 20.57X Ø 13	
15	6200502	1	PRESSURE PIPE OUTLET	
18	6200741	1	GASKET FOR TERMINAL BOX	(0802V/VA - 1502V/VA)
19	1803030	4	SCREW CROSS M5 X 12 FZB DIN7985	
20	3376	4	SERRATED LOCK WASHER D5.3 A2 DIN 6798A	
22	1814589	1	SCREW M8X90 DIN 912-8.8	
23	1800515	4	Lock Nut M8 - 8 A2K DIN 985	
24	1813484	1	SCREW INSEX M6X16	
25	6223089	1	WASHER	
26	1805399	1	LOCK NUT W. NYLONRING M6 A2	
27	6200062	4	COVER PLATE	
28	1803592	6	SHEET METAL SCREW	
29	6200280	1	BOILER TOP SECTION	
30	1800705	3	NUT M6 ISO 4032	
30	6200310	3	NUT	
31	6200504	1	NOZZLE LANCE COMP.	
33	6200093	3	INFEEED WASHER	
35	1803592	1	SHEET METAL SCREW	
36	1805399	1	LOCK NUT W. NYLONRING M6 A2	
37	1800440	6	WASHER -1101320 -1103440	
38	6200516	1	PRESSURE PIPE	
40	5206636	1	HOSE 6/10	L=390 Pls. indicate required lenght when ordering
41	1801034	2	HOSE CLIP 13MM	
42	1802347	3	CABLE BINDER 3 MM WHITE	WHITE
42	1803329	3	CABLE BINDER BLACK	BLACK
42	4973	1	HOSE Ø6X3	L=735 Pls. indicate required lenght when ordering

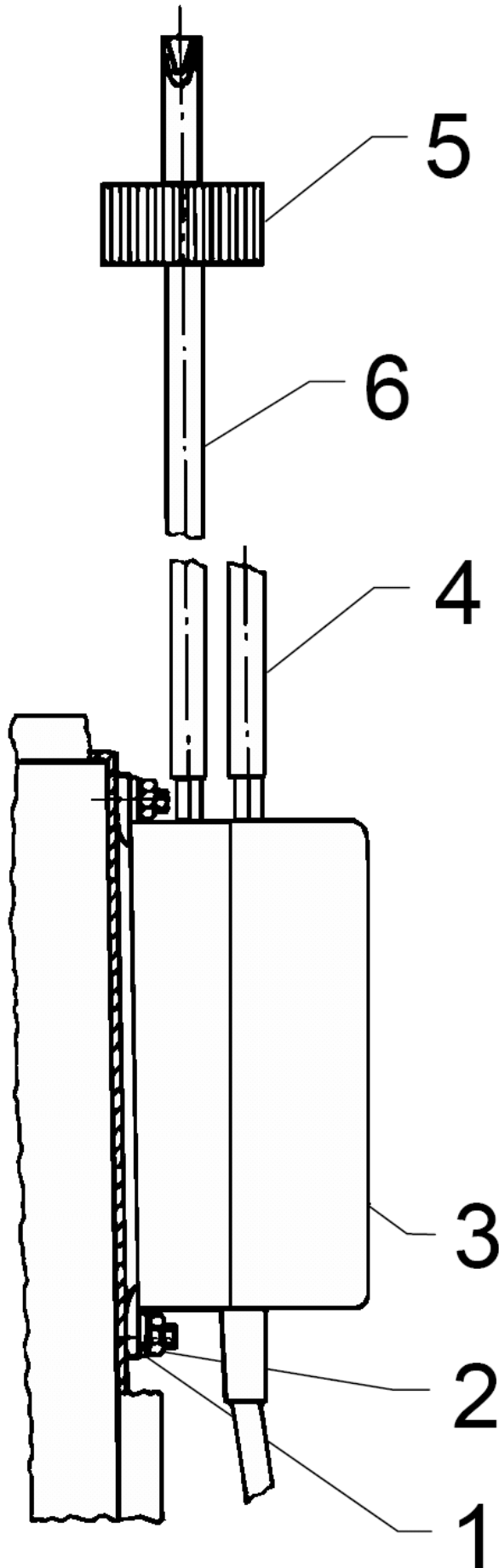
Pump f. softener

02V (0802VVA)

22-02-2015

Part List ID 02V16

17



Pump f. softener

02V (0802VVA)

22-02-2015

Part List ID

02V16

18

Pos	Part no.	Qty	Description	
1	1800887	2	WASHER M4	
2	1800127	2	LOCK NUT M4 8.8 A2K DIN 985	
3	3812468	1	DOSINGPUMP 24V 50HZ	
4	5206388	1	Hose soft PVC 4/6 Clear transparent	L=525 Pls. indicate required length when ordering
5	6200658	1	COVER FOR CONTAINER	
6	5206388	1	Hose soft PVC 4/6 Clear transparent	L=525 Pls. indicate required length when ordering

Chemical dosing

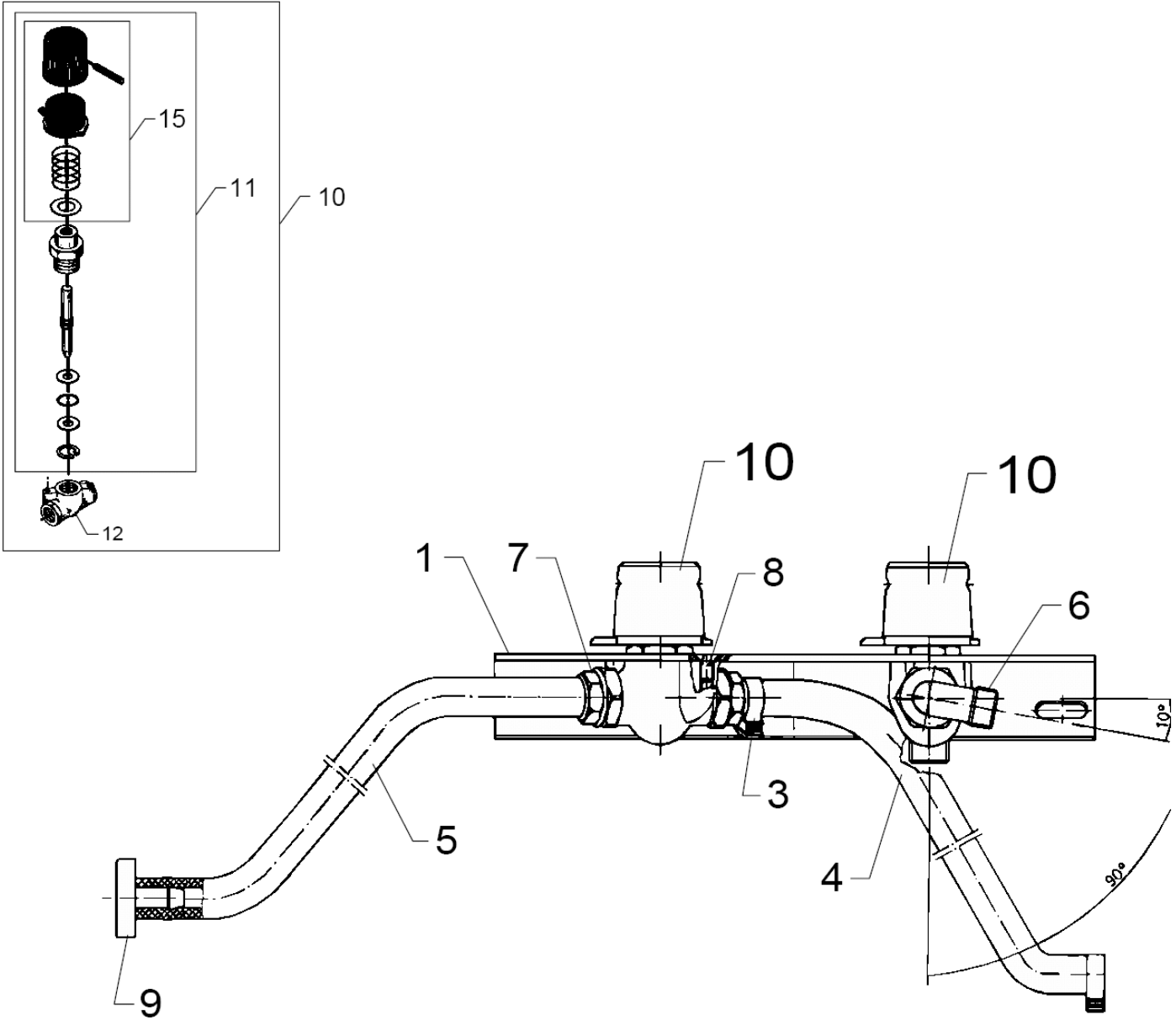
02V (0802VVA)

22-02-2015

Part List ID

02V18

19



Chemical dosing

02V (0802VVA)

22-02-2015

Part List ID

02V18

20

Pos	Part no.	Qty	Description
3	1810084	2	HOSE CLIP 10.8/12.3
4	5206636	1	HOSE 6/10 (L = 320) PLS. INDICATE LENGTH IN METRES!
5	5206636	1	HOSE 6/10 (L = 320) PLS. INDICATE LENGTH IN METRES!
7	1600527	2	HOSE SOCKET Ø6.5X1/4 INCH
8	1801612	2	COUNTERSUNK SCREW M4X6 ISO 7046 ST/CR
9	6400240	1	CHEMICAL FILTER /PLASTIC/
10	1111913	1	DOSING VALVE COMP.
11	1400811	1	SPINDLE COMPL.
12		1	NOTE COMMENT Use kit 1111913, position 10
15	6008041	1	VALVE HANDLE COMP.

Motor

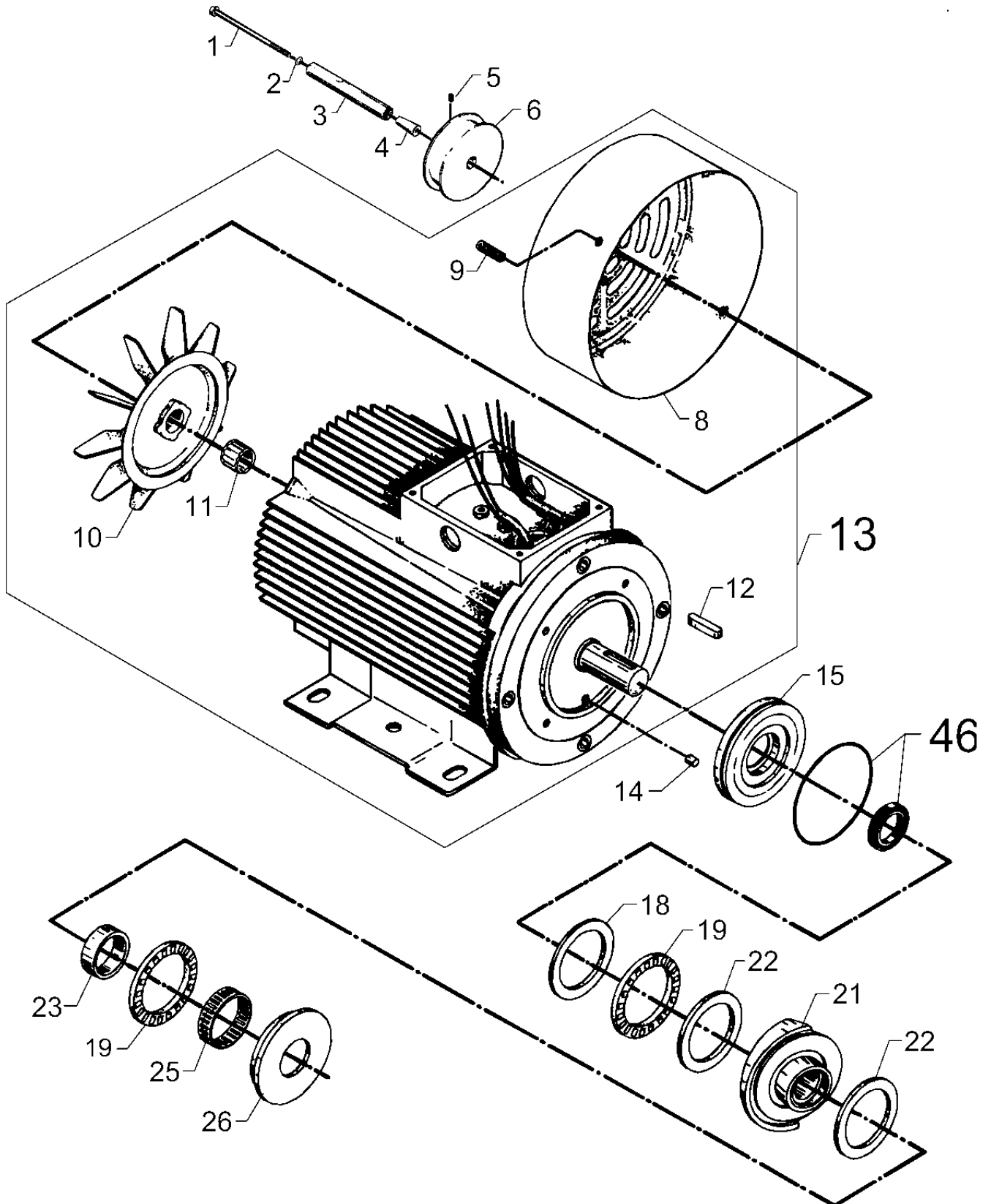
02V (0802VVA)

22-02-2015

Part List ID

02V20

21



Motor

02V (0802VVA)

22-02-2015

Part List ID 02V20

22

Pos	Part no.	Qty	Description	
1	6200415	1	STAY BOLT M5X80	
2	3376	1	SERRATED LOCK WASHER D5.3 A2 DIN 6798A	
3	6200413	1	DRIVESHAFT	
4	6200414	1	CONE	
5	1800358	1	SET SCREW DIN 916 M6X 8	
6	6200434	1	PULLEY	50HZ
6	6200435	1	PULLEY	60HZ
9	1803030	4	SCREW CROSS M5 X 12 FZB DIN7985	(1502VVA)
10	3805678	1	FAN	(1502VVA)
11	1803790	1	LOCK RING 20X18	(1502VVA,2602VVA)
12	3200789	1	KEY	(1502VVA,2602VVA)
13	6150659	1	MOTOR COMP.	2.2KW - 200/230V, 50/60HZ (2602VVA)
14	6150679	1	PIN	
15	6150610	1	REAR PLATE	
18	3200698	1	BEARING RING	
19	3200714	2	ROLLER THRUST BEARING	
21	6150648	1	WOBBLE DISC 4	50HZ (1502VVA)
22	3200706	2	BEARING RING	
23	3200722	1	INNER COLLAR	
25	3200664	1	NEEDLE BEARING	
26	6150618	1	BEARING RING	
46	6159027	1	GASKET KIT 02K-02KL	

Cylinder block

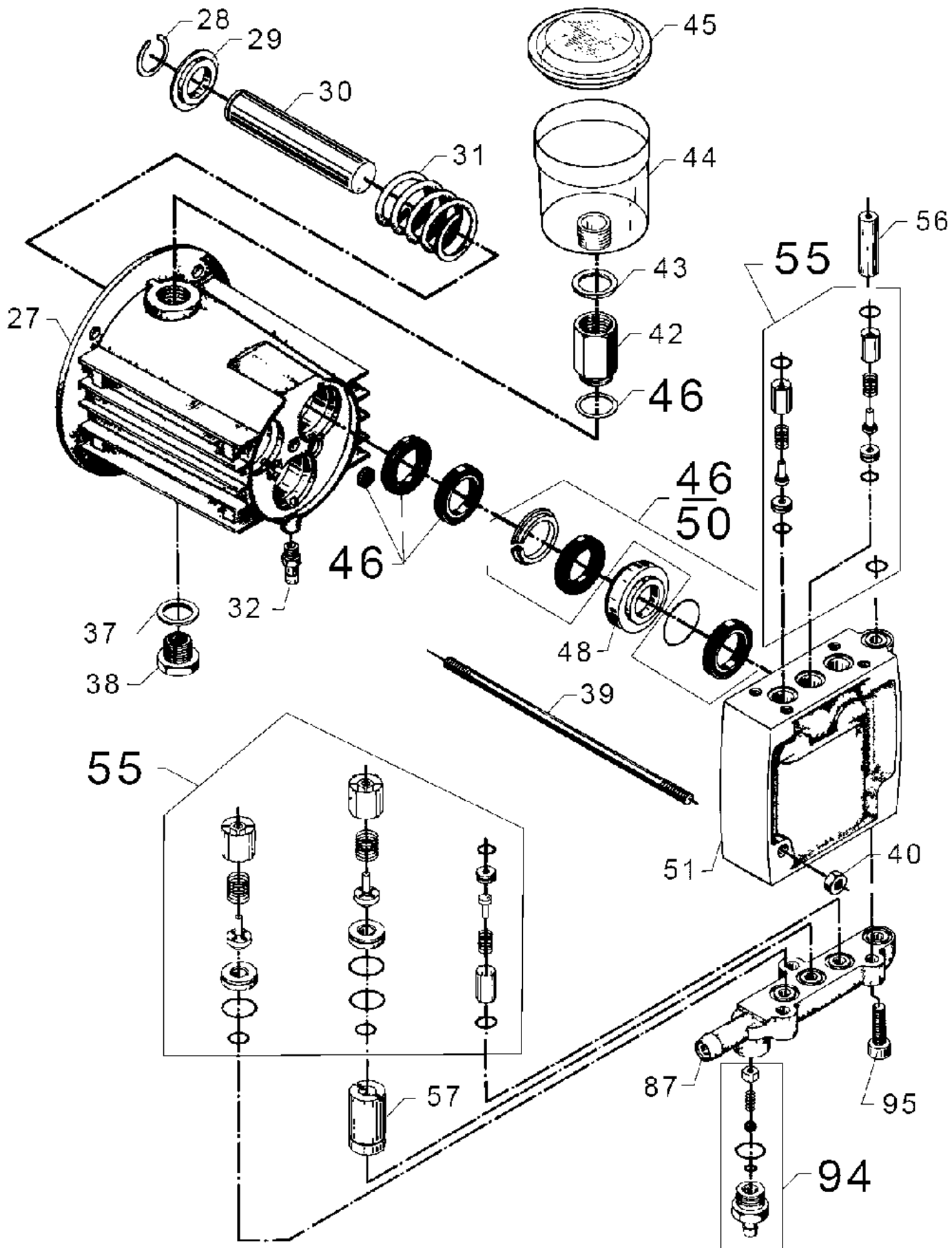
02V (0802VVA)

22-02-2015

Part List ID

02V22

23



Cylinder block

02V (0802V/VA)

22-02-2015

Part List ID 02V22

24

Pos	Part no.	Qty	Description
27	6150702	1	CYLINDERBLOCK
28	1803162	3	SEEGER CIRCLIP RING
29	6150622	3	RING
30	6150619	3	PISTON (0802V/VA,1502V/VA)
30	6152604	1	PISTON (2602V/VA)
31	2600310	3	SPRING
32	1603885	1	HOSE SOCKET
37	1801075	1	PACKING RING 23.8X17.2X2 3/8 INCH St-NBR
38	6150400	1	DRAIN PLUG
39	6150695	4	STAY BOLT
40	2758	4	HEXAGON NUT M8
42	6150678	1	SOCKET FOR OIL GLASS (0802V/VA,1502V/VA)
43	3000411	1	GASKET
44	2200285	1	OIL CONTAINER
45	2201854	1	COVER F. OIL RESERVOIR
46	6159027	1	GASKET KIT 02K-02KL
48	6150609	1	THRUST COLLAR
50	1119037	1	GASKETS REDUCED REP.KIT
51	6150607	1	HEAD CYLINDER 02K
55	1119310	1	VALVE SET 4X O2/A2/O3
56	6150611	1	SPACER A2V/VA
57	6150612	1	SPACER Ø20X37.5
87	6200526	1	SUCTION COVER (0802V/VA,1502V/VA)
94	6200563	1	SOCKET F. SUCTION COVER
95	1803337	3	SCREW M8X25

Regulation of water capacity

02V (0802V/VA)

22-02-2015

Part List ID 02V24

26

Pos	Part no.	Qty	Description	
96	6150533	1	PRESSURE GAUGE COMPL.	
97	6200652	1	PRESSURE METER PLATE	
98	6150507	1	REGULATING OF WATER CAPACITY	(0802V/VA,1502V/VA)
111	6200561	1	REGULATING OF WATER CAPACITY	(2602V/VA)
123	6150642	1	BOTTOM SCREW	
130	1118546	1	BY-PASS VALVE 02 REP.KIT	
136	1603422	1	THREADED CONNECTION	
137	6150676	1	ADJUSTMENT SCREW	
138	6150680	1	LOCK NUT	
139	3001377	1	HEAD GASKET Ø11.9XØ4.9X1.27	
140	6150608	1	VALVE COVER 02K	
143	3000460	1	O-RING 11.0X2.0 NITRIL 70SH	
147	6200558	1	THREADED CONNECTION COMP.	V
148	1602770	1	THREADED CONNECTION 12X1/4 INCH	VA
150	107141735	1	PISTON FOR BY-PASS	Piston included in pos. 130

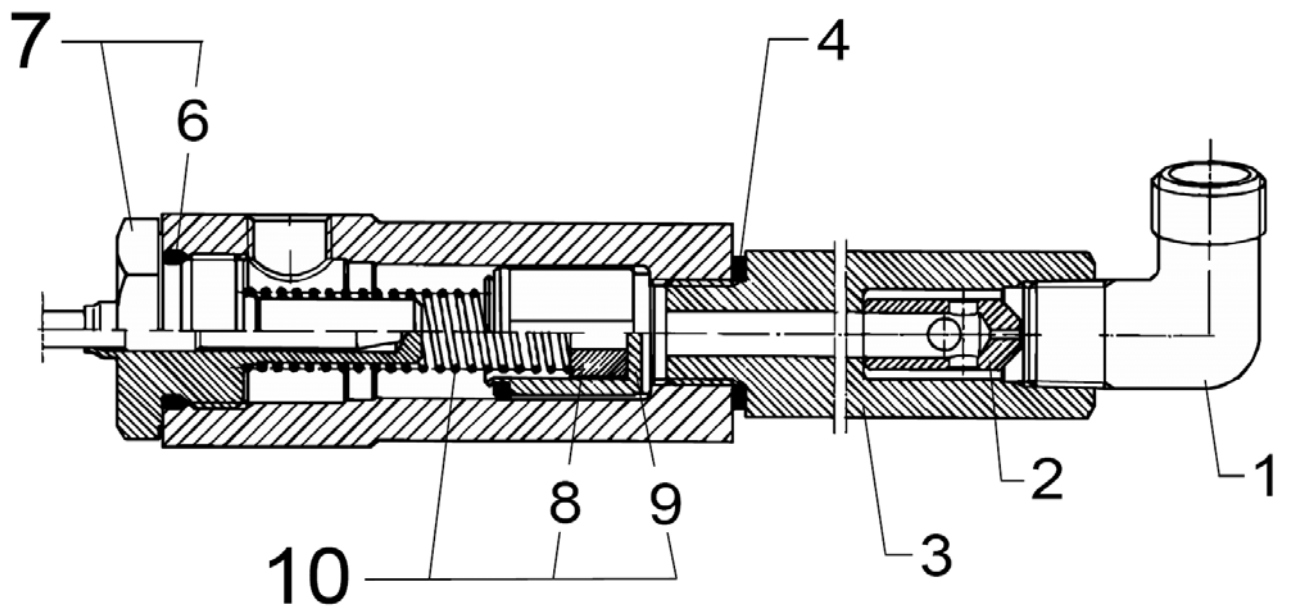
Flow switch, pump

02V (0802VVA)

22-02-2015

Part List ID 02V26

27



Flow switch, pump

02V (0802VVA)

22-02-2015

Part List ID
02V26

28

Pos	Part no.	Qty	Description
-	6200550	1	FLOW CONTROL PUMP
1	1600444	1	ANGLE 12 X 3/8
2	6101038	1	PISTON
3	6200537	1	HOUSING F.NON RETURN VALVE SHORT
3	6221257	1	HOUSE FOR NON-RETURN VALVE LONG
4	1801075	1	PACKING RING 23.8X17.2X2 3/8 INCH St-NBR
6	3000825	1	O-RING 20.24X2.62 NITRIL 70SH
7	6221773	1	REED SWITCH WITH O-RING
8	1803485	1	RING MAGNET 14X5.2X9
9	6200554	1	PISTON COMP.
10	1119701	1	FLOW SWITCH REP.KIT

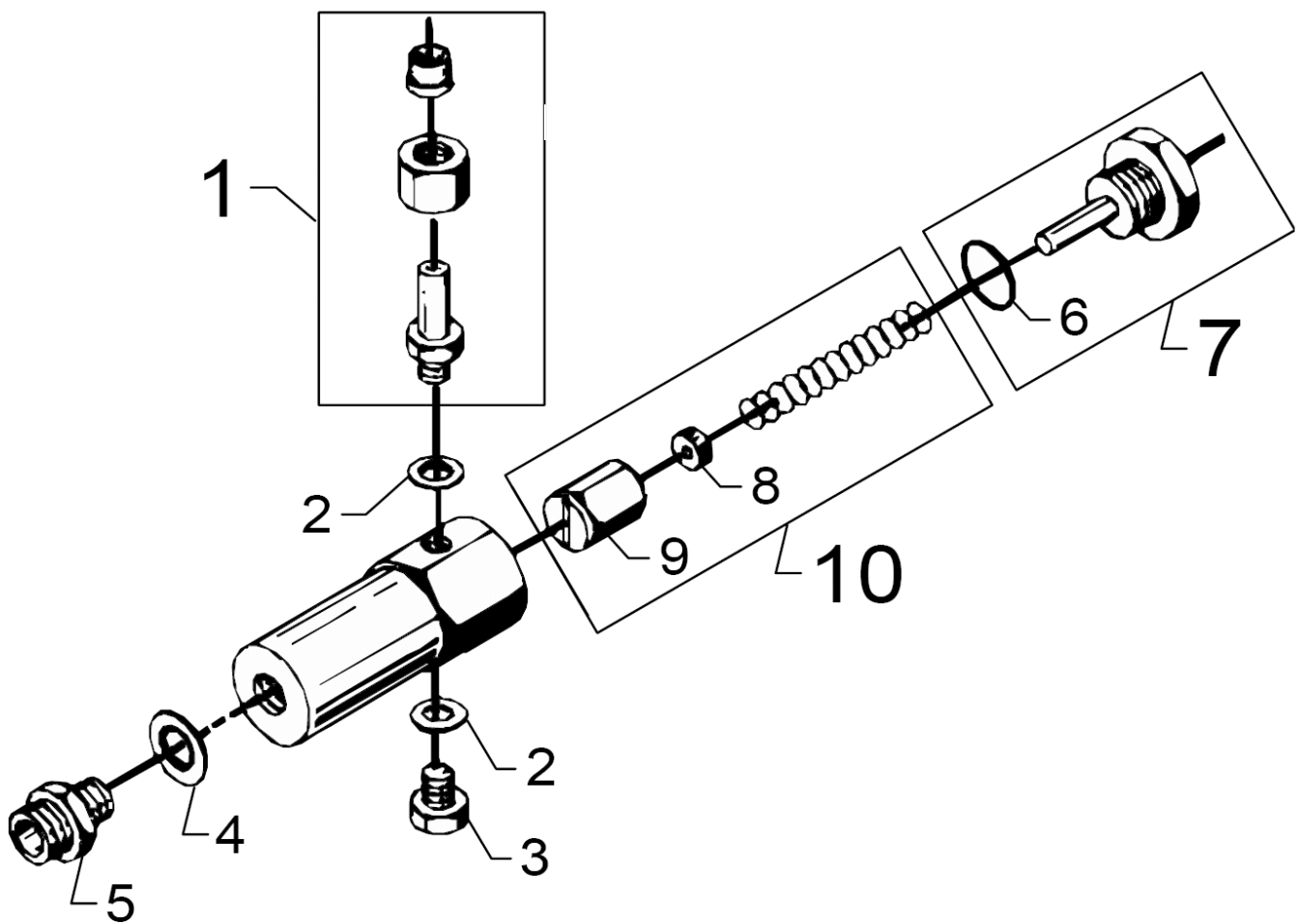
Flow control, compl. (a)

02V (0802V/VA)

22-02-2015

Part List ID 02V28

29



Flow control, compl. (a)

02V (0802V/VA)

22-02-2015

Part List ID

02V28

30

Pos	Part no.	Qty	Description
1	6200558	1	THREADED CONNECTION COMP.
1	6228551	1	FLOW SWITCH COMPL. 02V/VA
2	1803493	2	PACKING RING Ø 20.57XØ 13
3	6200529	1	DRAIN SCREW
4	1801075	1	PACKING RING 23.8X17.2X2 3/8 INCH St-NBR
5	1601079	1	THREADED CONNECTION
6	3000825	1	O-RING 20.24X2.62 NITRIL 70SH
7	6221773	1	REED SWITCH WITH O-RING
8	1803485	1	RING MAGNET 14X5.2X9
9	6200554	1	PISTON COMP.
10	1119701	1	FLOW SWITCH REP.KIT

Flow control, compl. (b)

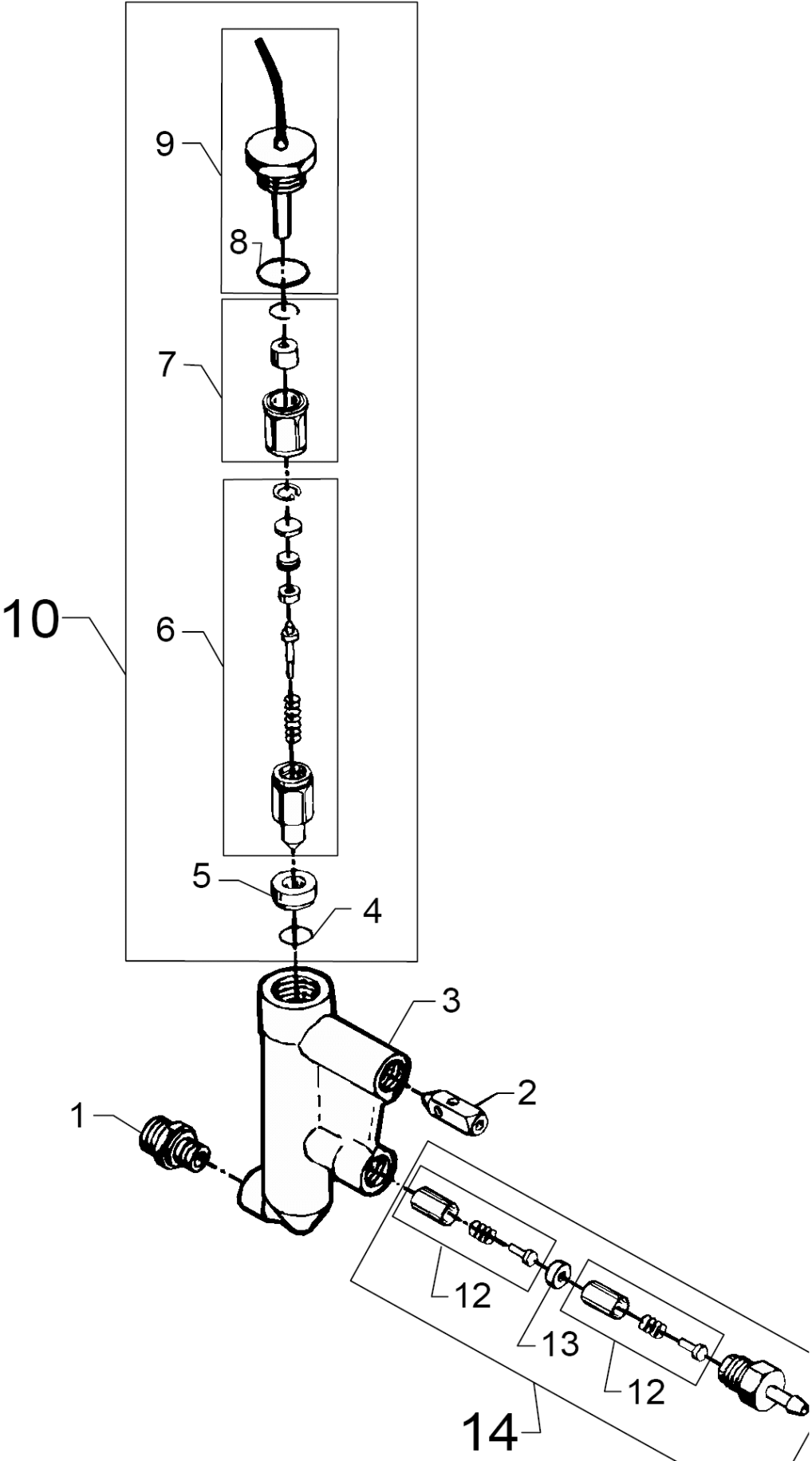
02V (0802V/VA)

22-02-2015

Part List ID

02V30

31



Flow control, compl. (b)

02V (0802VVA)

22-02-2015

Part List ID 02V30

32

Pos	Part no.	Qty	Description
1	1602770	1	THREADED CONNECTION 12X1/4 INCH
1	6200574	1	FLOW CONTROL COMP. FROM 01.02.90
2	6101038	1	PISTON
3	6201545	1	HOUSING F. FLOW SWITCH
4	3001112	1	O-RING 10.0X3.0 NITRIL 70SH
5	6201534	1	SEAT
6	6350463	1	NON-RETURN VALVE COMPL.
7	6350454	1	PISTON
8	3000825	1	O-RING 20.24X2.62 NITRIL 70SH
9	6221773	1	REED SWITCH WITH O-RING
10	1119319	1	FLOW SWITCH REP.KIT
12	1119566	2	NON RETURN VALVE REP.KIT
13	6201535	1	SEAT
14	1119318	1	NON RETURN VALVE REP.KIT

Flow switch

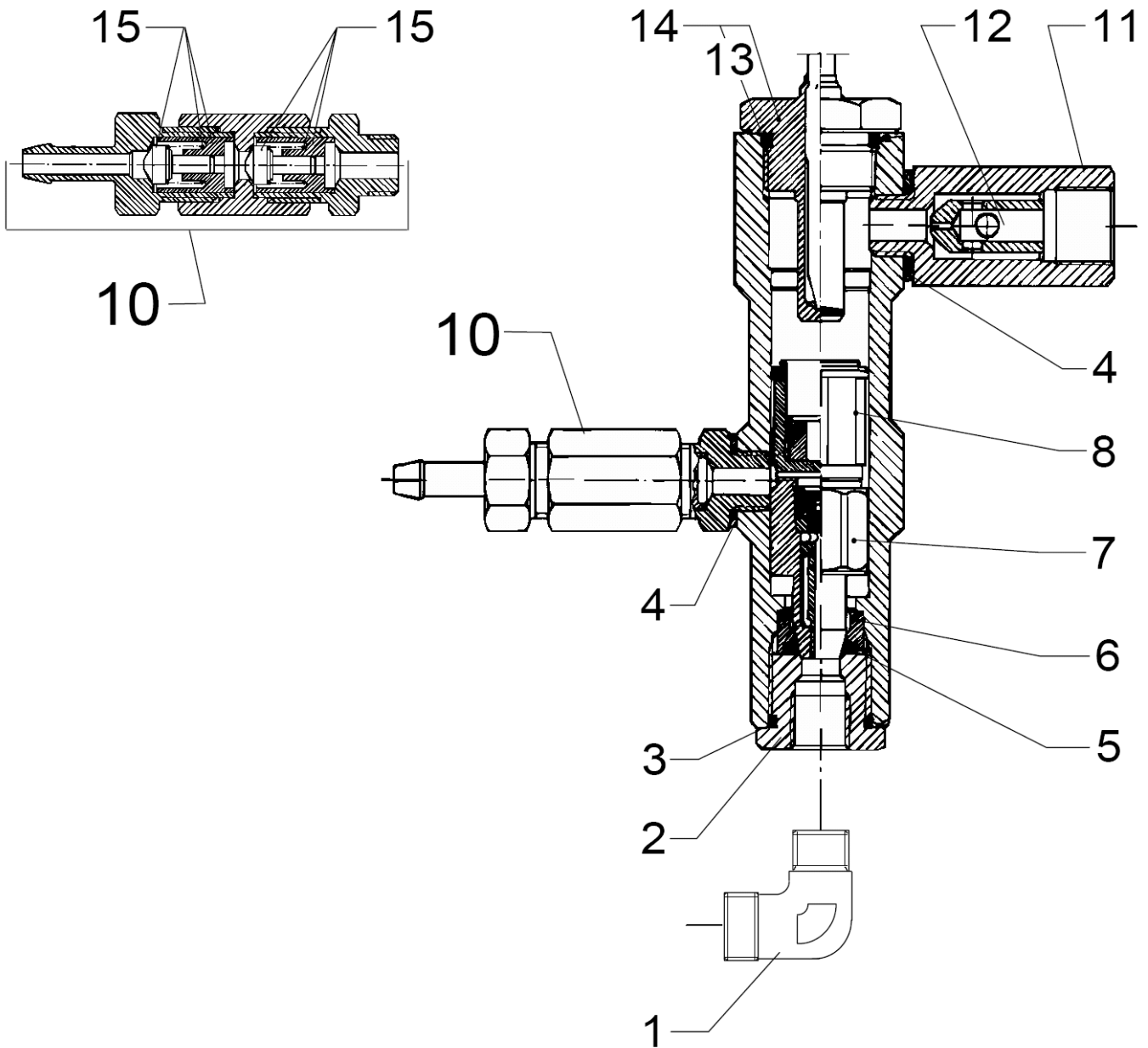
02V (0802V/VA)

22-02-2015

Part List ID

02V32

33



Flow switch

02V (0802VVA)

22-02-2015

Part List ID

02V32

34

Pos	Part no.	Qty	Description
1	1603119	1	ANGLE D12X1/4 INCH
1	6200939	1	FLOW CONTROL OUTLET UP TO 01.02.90
2	6300438	1	UNION NUT
3	3000262	1	O-RING 18.0X2.0 DIN 3770 NBR70
4	1803493	2	PACKING RING Ø 20.57XØ 13
5	3001112	1	O-RING 10.0X3.0 NITRIL 70SH
6	6350625	1	BUSHING F. O-RING
7	6350463	1	NON-RETURN VALVE COMPL.
8	6350454	1	PISTON
10	6200938	1	NON RETURN VALVE COMP.
11	6220530	1	HOUSING
12	6101038	1	PISTON
13	3000825	1	O-RING 20.24X2.62 NITRIL 70SH
14	6221773	1	REED SWITCH WITH O-RING
15	1119566	2	NON RETURN VALVE REP.KIT

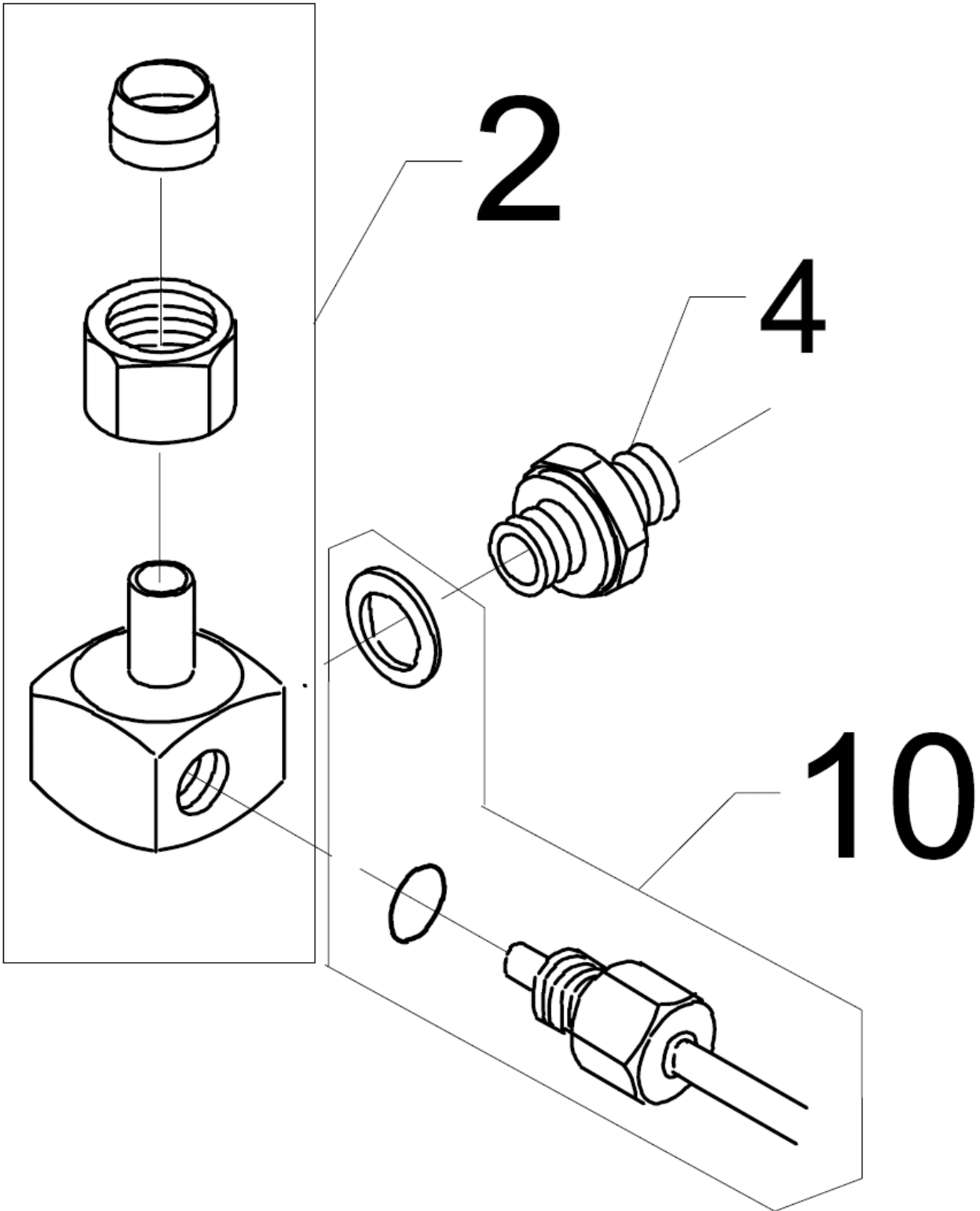
Outlet for coil, elbow

02V (0802V/VA)

22-02-2015

Part List ID 02V34

35



Outlet for coil, elbow

02V (0802VVA)

22-02-2015

Part List ID

02V34

36

Pos	Part no.	Qty	Description
2	6200360	1	OUTLET FOR COIL ELBOW
4	1601079	1	THREADED CONNECTION
10	1119011	1	ELBOW OUTLET F.COIL REP.KIT

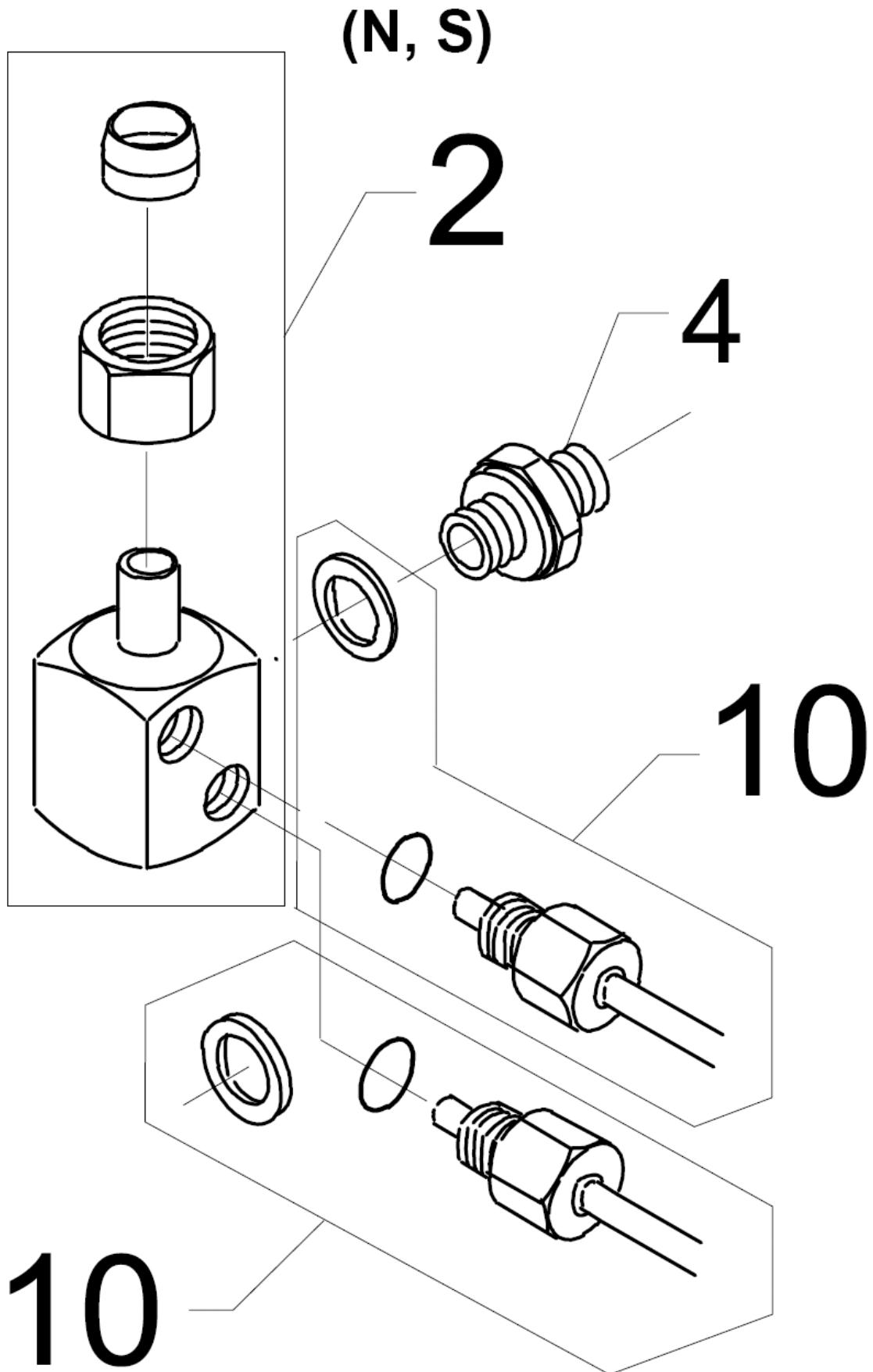
Outlet for coil, elbow

02V (0802VVA)

22-02-2015

Part List ID 02V36

37



Outlet for coil, elbow

02V (0802V/VA)

22-02-2015

Part List ID 02V36

38

Pos	Part no.	Qty	Description
0	6228354	1	BOILER OUTLET ELLBOW N,S
2	6200381	1	OUTLET FOR COIL ELBOW
4	1601079	1	THREADED CONNECTION
10	1119011	2	ELBOW OUTLET F.COIL REP.KIT

Outlet for coil, elbow, complete f. AUS

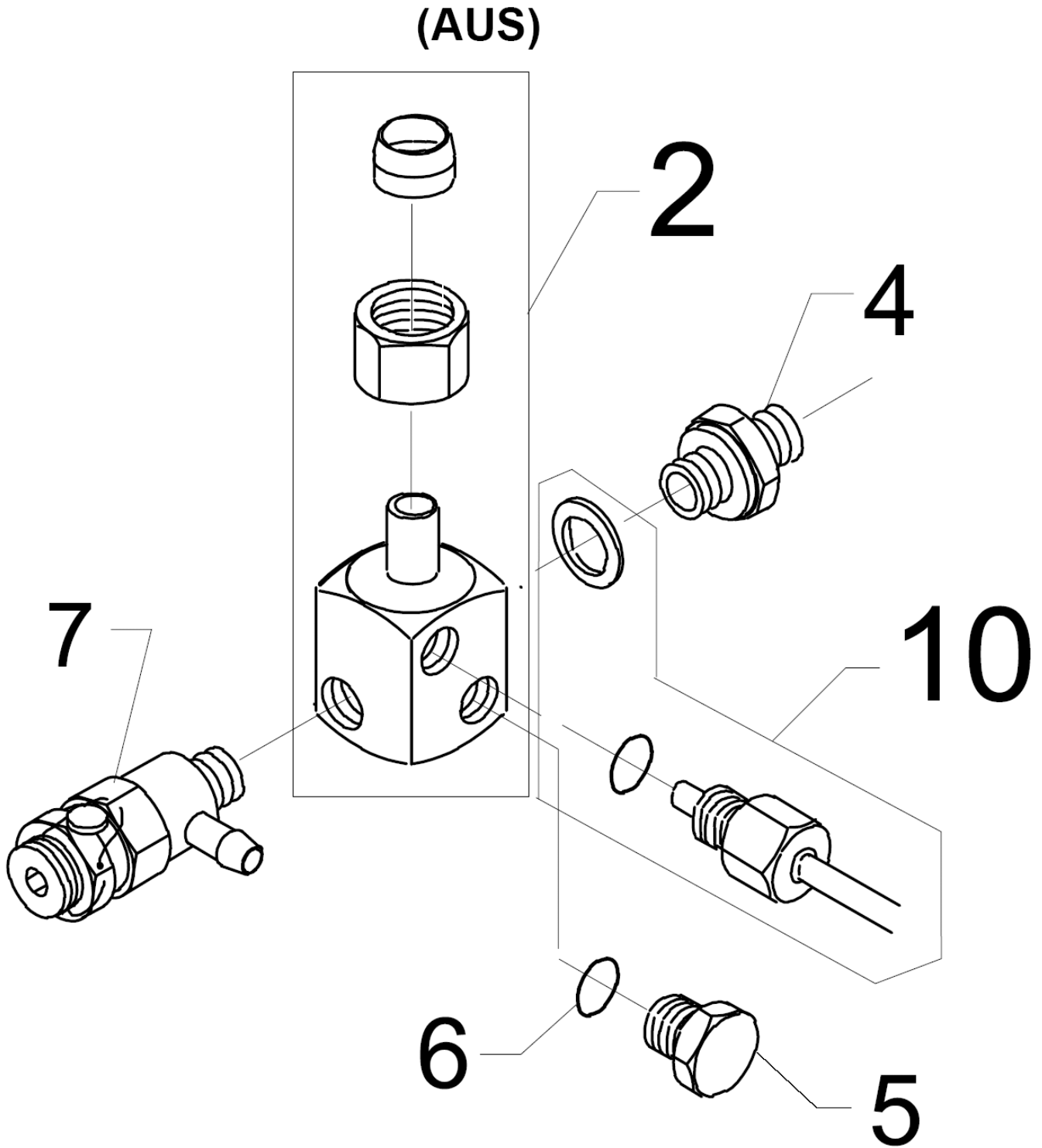
02V (0802VVA)

22-02-2015

Part List ID

02V38

39



Outlet for coil, elbow, complete f. AUS

02V (0802VVA)

22-02-2015

Part List ID

02V38

40

Pos	Part no.	Qty	Description
1	6228357	1	OUTLET F. COIL ELBOW COMPL. AUS
2	6220368	1	OUTLET FOR COIL ELBOW
4	1601079	1	THREADED CONNECTION
5	6200491	1	PLUG
6	3000973	1	O-RING 8.6 X 2.4 SMS
7	6220584	1	SAFETY VALVE COMPL. 250 BAR
10	1119011	1	ELBOW OUTLET F.COIL REP.KIT

Outlet for coil, elbow SF

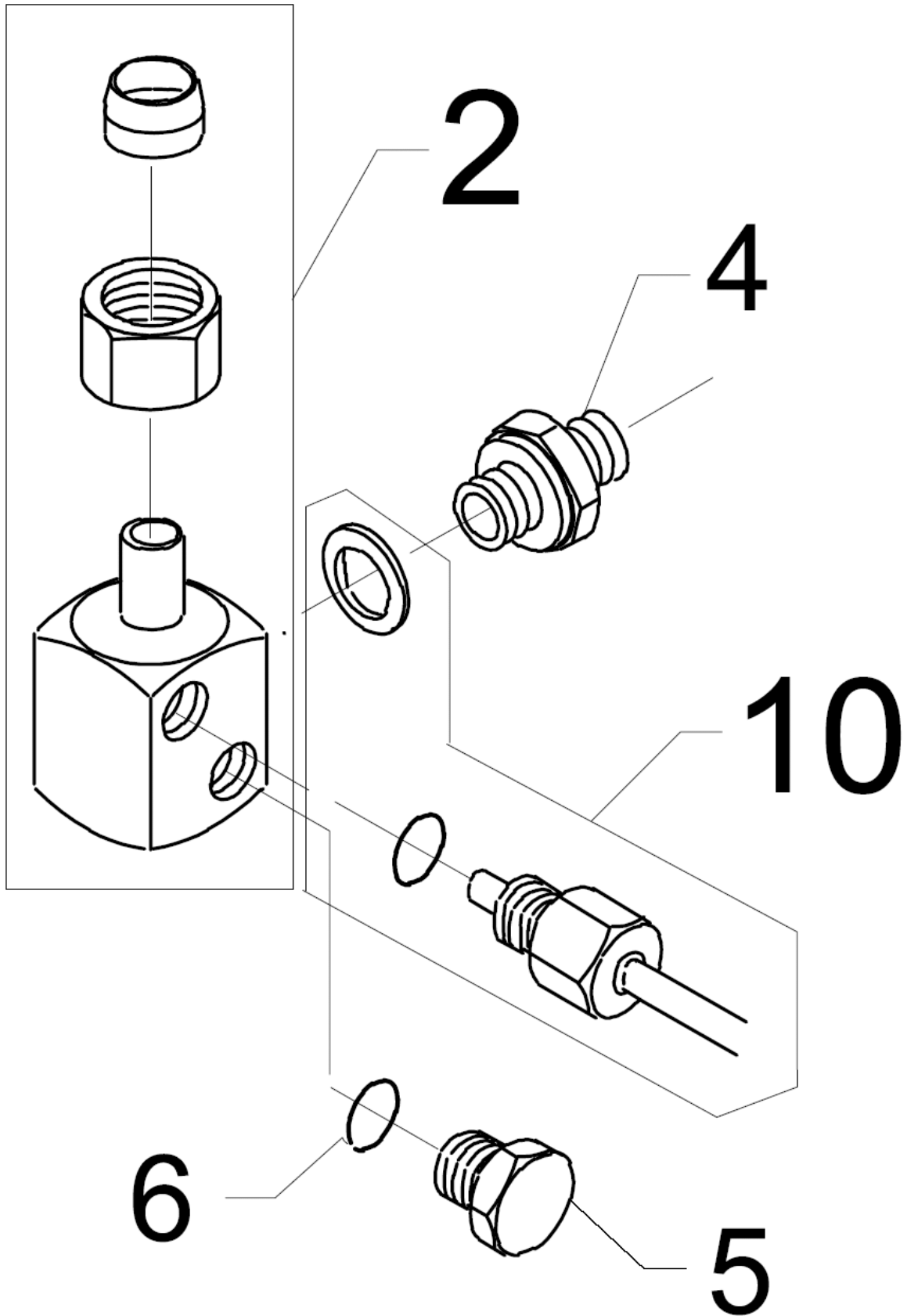
02V (0802VVA)

22-02-2015

Part List ID 02V40

41

(SF)



Outlet for coil, elbow SF

02V (0802V/VA)

22-02-2015

Part List ID 02V40

42

Pos	Part no.	Qty	Description
2	6200381	1	OUTLET FOR COIL ELBOW
2	6228355	1	OUTLET F. COIL ELBOW COMPL. SF
4	1601079	1	THREADED CONNECTION
5	6200491	1	PLUG
6	3000973	1	O-RING 8.6 X 2.4 SMS
10	1119011	2	ELBOW OUTLET F.COIL REP.KIT

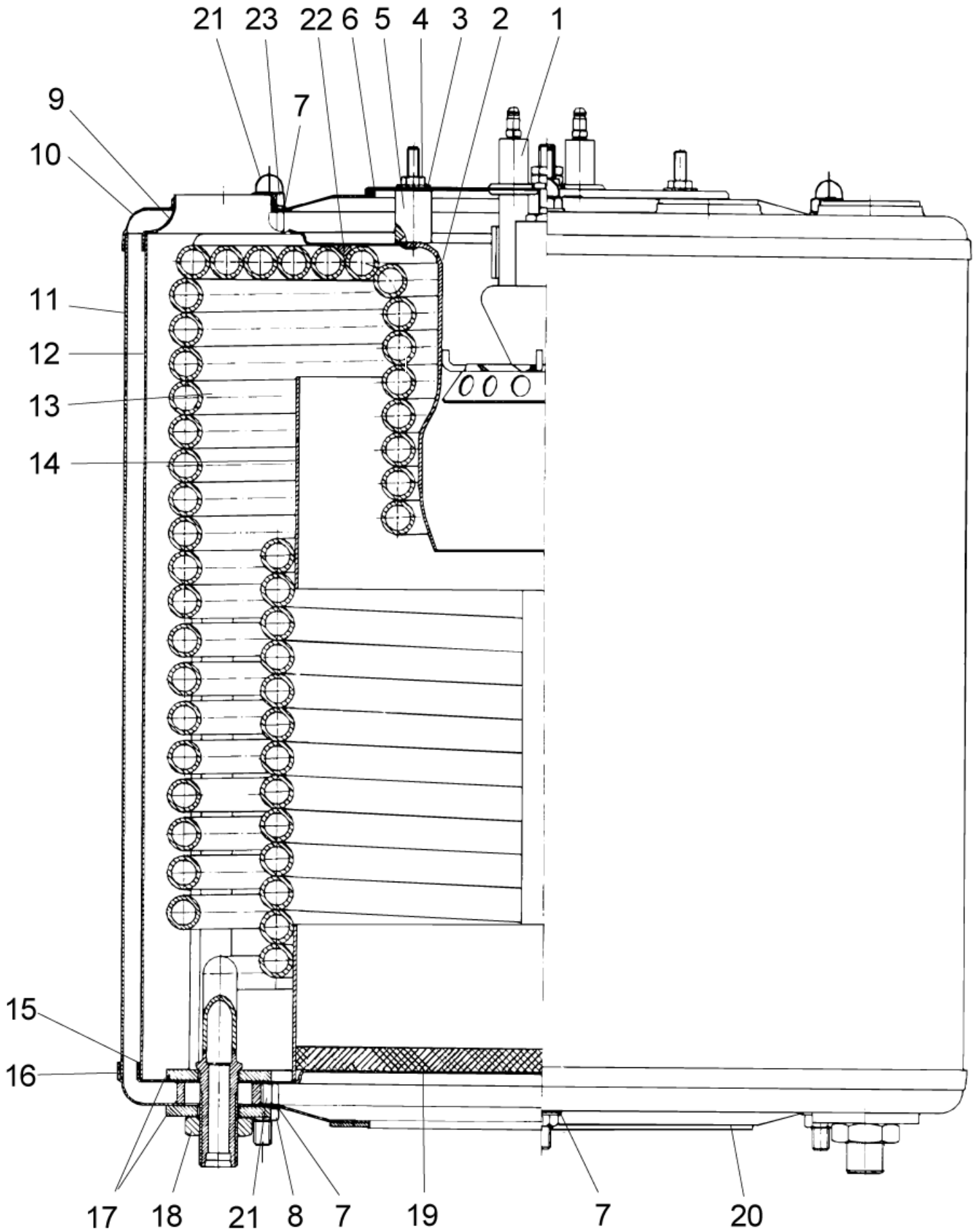
Boiler

02V (0802VVA)

22-02-2015

Part List ID 02V42

43



Boiler

02V (0802VVA)

22-02-2015

Part List ID 02V42

44

Pos	Part no.	Qty	Description
2	6200350	1	BURNER TUBE
3	1800440	3	WASHER -1101320 -1103440
4	1800705	3	NUT M6 ISO 4032
5	6200281	3	SPACING PIECE
6	3001104	1	O-RING 164.3 X 3.0 SMS
7	1800796	7	WASHER M8
8	2758	3	HEXAGON NUT M8
9	6200354	1	BOILER TOP. INSIDE
10	6200250	1	BOILER TOP. OUTSIDE
11	6200256	1	OUTER BOILER
12	6200255	1	INNER BOILER
13	6200390	1	COIL-YELLOW
13	6201388	1	COIL. SS SS
14	6200359	1	FLAME TUBE
15	6200253	1	BOILER BOTTOM. INSIDE
16	6200355	1	BOILER BOTTOM. OUTSIDE
17	6200273	4	WASHER
18	1803220	2	HEXAGON NUT M18X1.5 ISO 8675 ZN
19	6240257	1	CERAMIC BOILER INSULATION
20	6200282	1	GASKET FOR BOILER
21	6200286	6	BOILER NUT
22	6200299	1	PACKING CORD L=700
23	1807528	3	NUT M8. STAINLESS

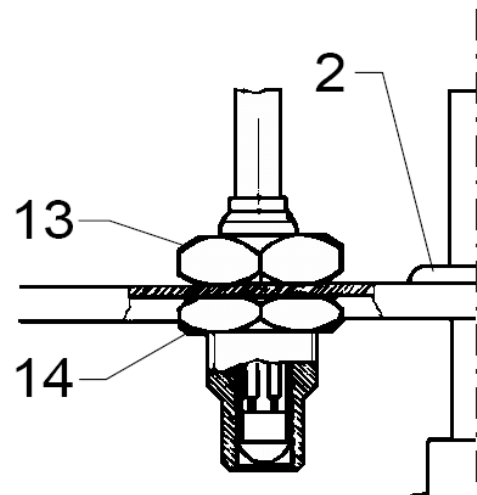
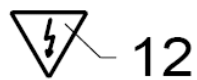
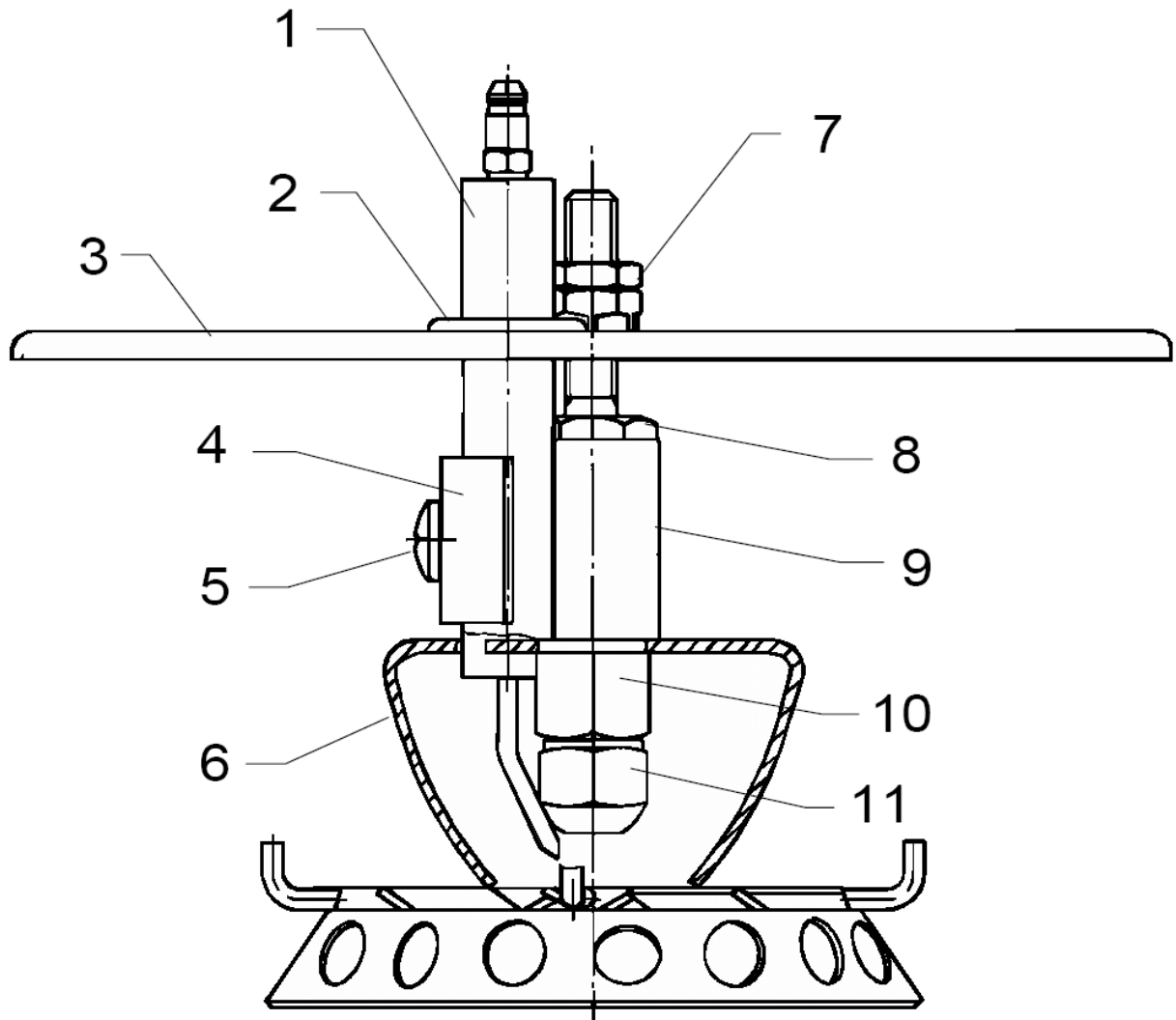
Air distributor

02V (0802V/VA)

22-02-2015

Part List ID 02V44

45



Air distributor

02V (0802VVA)

22-02-2015

Part List ID
02V44

46

Pos	Part no.	Qty	Description	
1	106200371	1	AIR DISTRIBTOR W. SENSOR	(0802)
1	1119303	1	ELECTRODE SHORT REP.KIT	
2	3001427	2	CABLE GLAND	
3	6200364	1	COVER FOR BOILER	
3	6200373	1	COVER- AIR DISTRIBUTOR W. SENS	
4	6200260	1	CLAMP FOR ELECTRODE	
5	1801273	1	SCREW M6 X 12	
6	6200365	1	AIR DISTRIBUTOR	
7	1803402	1	LOCK NUT M8X1	
8	6200296	1	NUT FOR NOZZLE HOLDER	
9	6200297	1	HOLDER F. ELECTRODE	
10	6220250	1	NOZZLE HOLDER	
11	2800548	1	OIL NOZZLE	7,49 KG (1502VVA,2602VVA)
11	2800555	1	NOZZLE 5.84KG	5.84 KG/H 60 GR (0802VVA)
13	6200301	1	SENSOR F. FLAMECONTROL	(1502)
13	6201887	1	SAFETY FUSE	UP TO 01.10.94, D
14	1803535	1	NUT	(1502)

Fan

02V (0802V/VA)

22-02-2015

Part List ID 02V46

48

Pos	Part no.	Qty	Description
2	6200423	1	SUCTION FUNNEL
3	6200458	1	OIL PUMP BRACKET
4	1803956	4	TAPTITE SCREW M4X12 DIN7500 D
5	6200412	1	IMPELLER
6	3200680	1	BALL BEARING 6201 2 RS
7	3200995	1	KEY 4X4X12
8	6200468	1	PULLEY Ø 27 (1502V/VA,2602V/VA)
8	6200469	1	PULLEY. COMPLETE (0802V/VA)
9	1800309	1	LOCK WASHER
10	6200436	1	NUT M10
12	3800984	1	COUPLING
13	3801008	1	COUPLING
14	3800992	1	COUPLING
15	1801091	1	CYLINDER SCREW M5X10 ISO 4762 ST 8.8/ZN
16	101117978	1	FUEL PUMP COMPLETE 24V
16		1	REPAIR KIT
16		1	COIL - SUNTEC
16		1	COIL WITH NUT AND WASHER
17	1600527	2	HOSE SOCKET Ø6.5X1/4 INCH
18	1603422	1	THREADED CONNECTION
19	6200409	1	SPRING BUSH
20	6201402	1	SHAFT FOR FAN
21	1803477	1	SEEGER CIRCLIP
22	6200426	1	BELT 50 HZ 50HZ 642X10 MM
22	6200428	1	BELT 60 HZ 60HZ 627X10 MM
23	3201019	1	BALL BEARING (0802V/VA)
24	3812872	1	CABLE FOR OILPUMP (1502V/VA,2602V/VA)

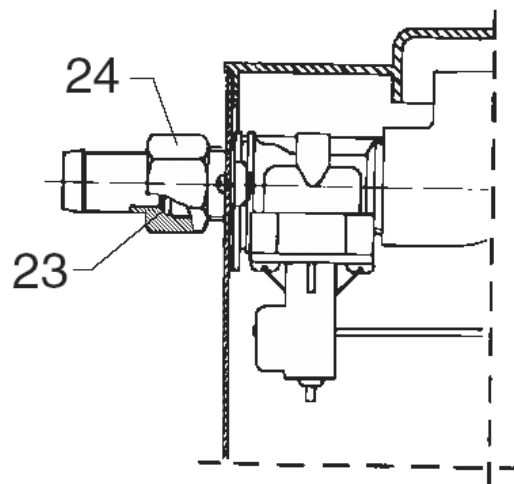
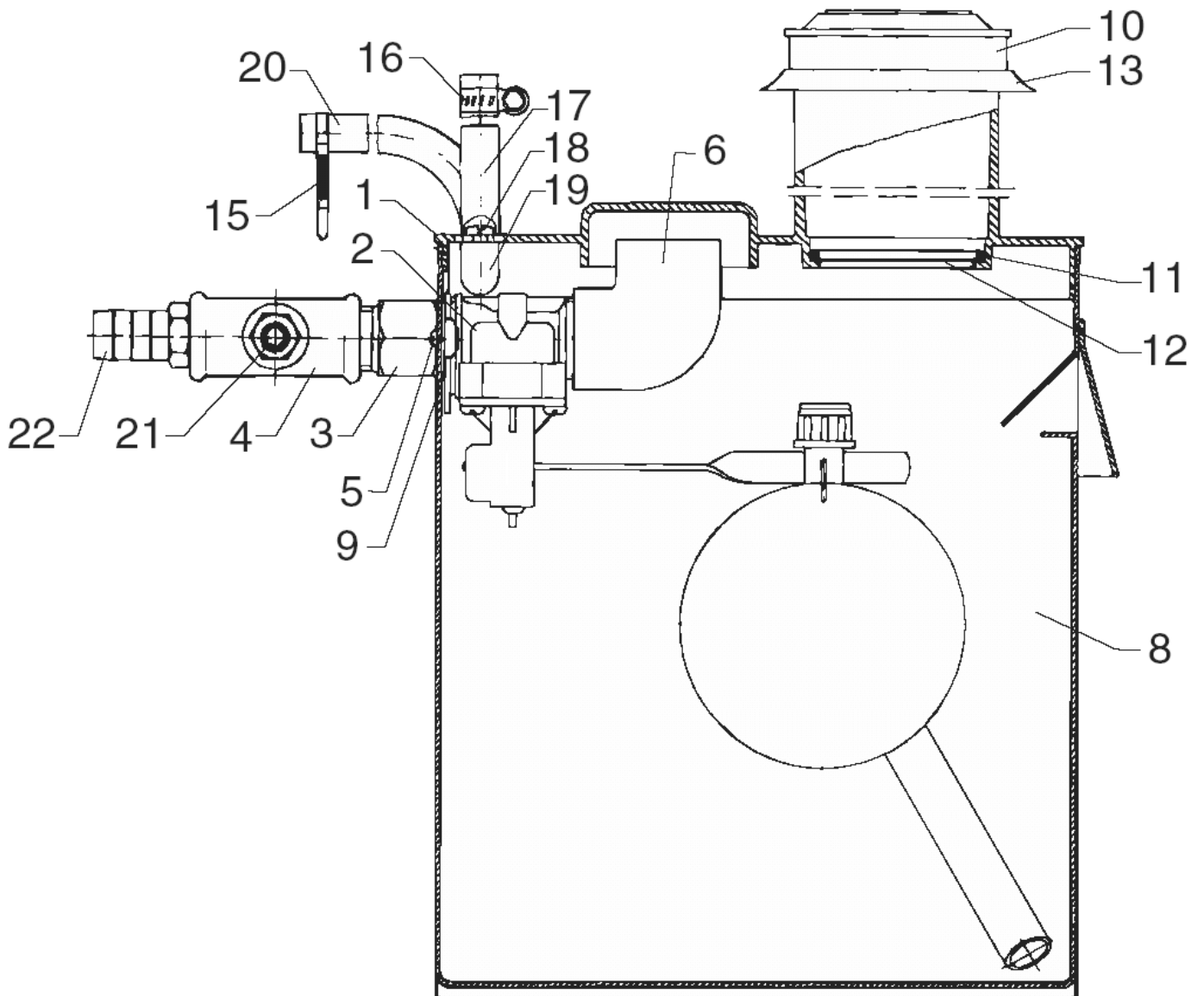
Float chamber

02V (0802VVA)

22-02-2015

Part List ID 02V48

49



Float chamber

02V (0802V/VA)

22-02-2015

Part List ID
02V48

50

Pos	Part no.	Qty	Description	
1	6200588	1	LID FOR FLOAT CHAMBER	02V
1	6200589	1	LID F/FLOAT CHAMBER	02VA
1	6200594	1	COVER A2VA	AUS,J
2	1117035	1	FLOAT VALVE	
3	6402318	1	THREADED CONNECT.F.FLOAT VALVE	(1502VA ,2602VA)
4	1600923	1	T CONNECTION	(1502VA ,2602VA)
5	1802891	1	SCREW M4X12	
6	1605971	1	90DG ANGLE	
8	6200626	1	FLOAT CHAMBER	
9	3001724	1	GASKET 20X26X1	UP TO 30.06.93
10	2201854	1	COVER F. OIL RESERVOIR	
11	6200662	1	CLAMPING RING	
12	6200661	1	STRAINER	
13	6200590	1	SLEEVE	
16	8298	1	HOSE CLIP 16-27	AUS, J
17	4973	1	HOSE Ø6X3	AUS, J (L=600) PLS. INDICATE LENGTH IN METRES!
18	1804699	1	SCREW M5 X 6 ISO 7045 ZN	AUS, J
20	4973	1	HOSE Ø6X3	AUS, J (L=600) PLS. INDICATE LENGTH IN METRES!
21	1600527	1	HOSE SOCKET Ø6.5X1/4 INCH	VA
22	6300262	1	HOSE UNION	VA
23	6200575	1	HOSE TAIL FOR FLOAT TANK	V
24	3001435	1	RUBBER SEAL	V

Control panel

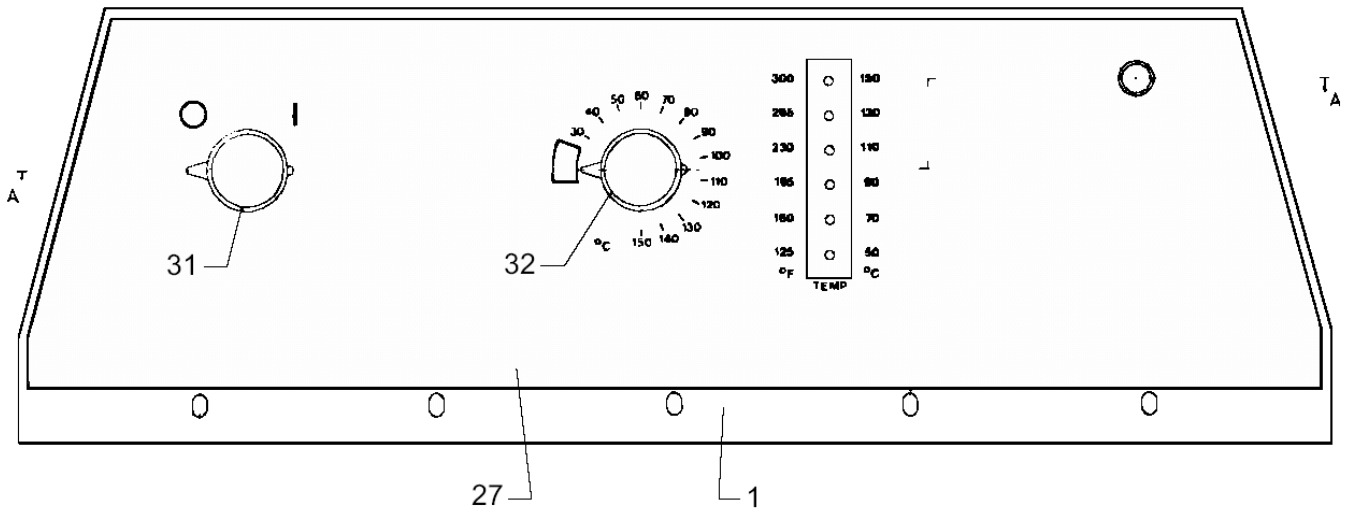
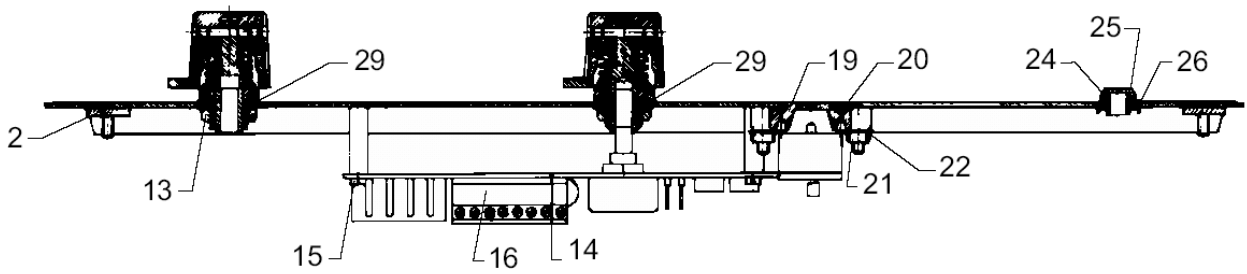
02V (0802VVA)

22-02-2015

Part List ID 02V50

51

Snit A-A



Control panel

02V (0802VVA)

22-02-2015

Part List ID
02V50

52

Pos	Part no.	Qty	Description	
1	6201767	1	FRONT PLATE	
1	6201854	1	FRONT PLATE MOUNT. 3-PHASE	UP TO 01.10.94, 02VA 3
2	6200745	1	GASKET FOR FRONT PLATE	
13	1803535	2	NUT	
14	6420008	1	ELECTRIC STEERING TFC. SM	UP TO 01.10.94
14	6420009	1	CIRCUIT BOARD FLAME CONTROL	(FLAME CONTROL)
15	1803139	4	SCREW M3X6	
16	3805439	1	PLUG	8 POL.
16	3817079	1	PLUG FOR PRINT 7-POLE	7 POL.
16	3817095	1	PLUG FOR PRINT 12-POLE	12 POL.
19	6200729	1	INSPECTION GLASS F.THERMONETER	
20	6201756	1	GASKET FOR PANE	
21	2759	4	HEXAGON NUT M4	
22	1800887	4	WASHER M4	
24	3805389	1	WINDOW FOR GLOW DISCHAR.LAMP	
25	6201774	1	GASKET	
26	1803667	1	LOCK WASHER	
27	6201758	1	FRONT PLATE 1 PHASE PRINTED	02-V, 1~/02VA, 1 and 3
29	3001468	2	FIBRE WASHER	
31	1117399	1	START/STOP BUTTON COMPL.	
32	1117381	1	ADJUSTING KNOB COMPL.	ADJUSTING KNOB

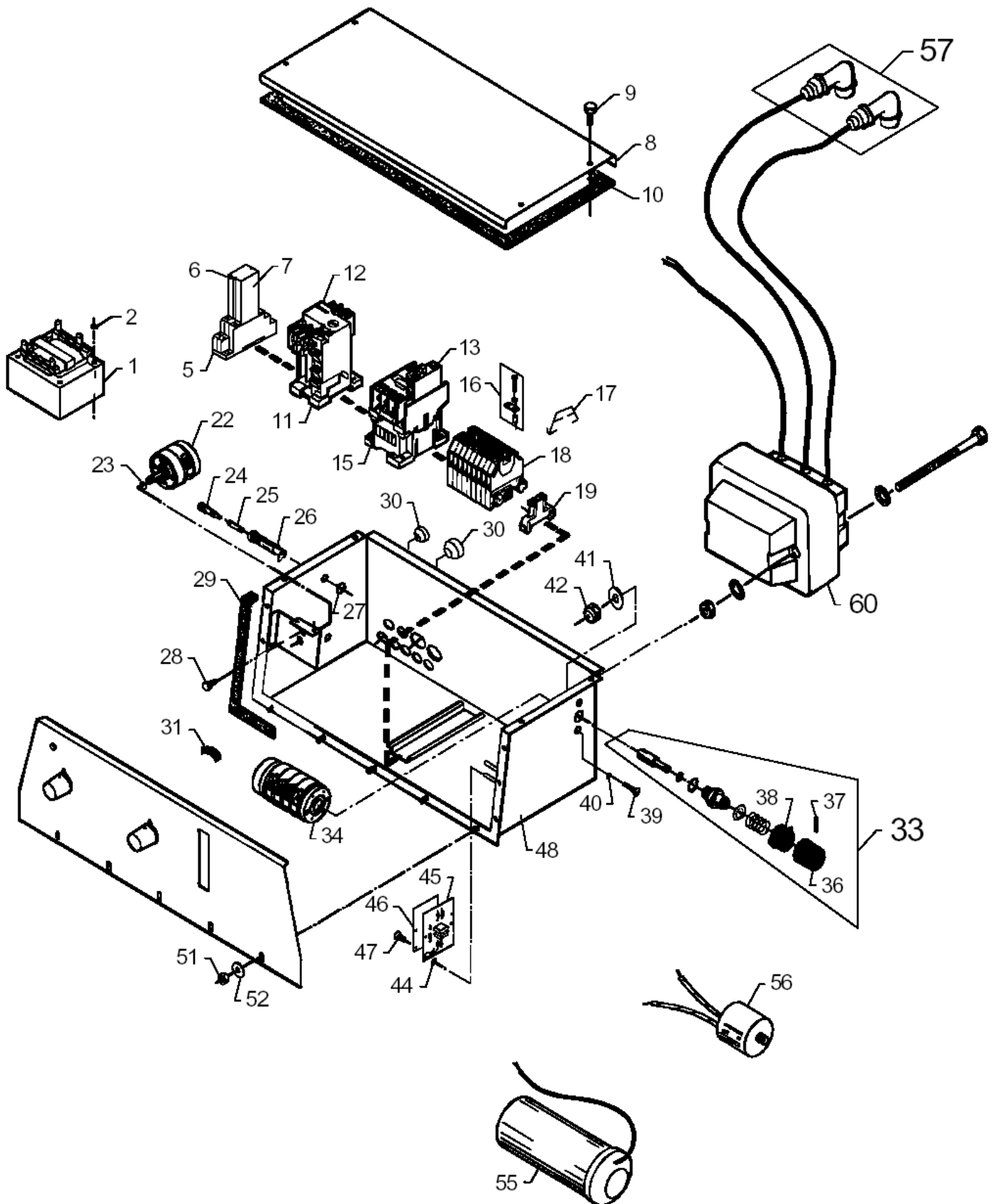
Electric parts

02V (0802VVA)

22-02-2015

Part List ID 02V52

53



Electric parts

02V (0802VVA)

22-02-2015

Part List ID 02V52

54

Pos	Part no.	Qty	Description	
1	3808458	1	STEERING TRANSFORMER 50-6	415V,440V
1	3819760	1	SAFETY TRANSFORMER 24V	230V USA, SJ, CN, ROK, U
1	3819778	1	SAFETY TRANSFORMER 24V	230-240V GB, AUS, SGP, HK
1	3819786	1	SAFETY TRANSFORMER 24V	400V
1	3819851	1	SAFETY TRANSFORMER 24V	I, B, N, SGP, E 230V/400V
2	1805563	2	LOCK WASHER	
5	3812633	1	RELAY SOCKET	
6	3812658	2	CLAMP	
7	3812641	1	RELAY	
8	6200734	1	COVER	
9	1803956	4	TAPTITE SCREW M4X12 DIN7500 D	
10	6200744	1	GASKET FOR COVER	
11	3811643	1	RELAY SOCKET CA3-12/16	
12	101119416	1	THERMAL RELAY CT3-32 REP.KIT	USA, 115V
12	3806551	1	THERMAL RELAY ST3-16-11F	CT 12-17,5A
15	103822313	1	CONTACTOR CJX2-D25 25A 24V 3P+NO/US	23A FROM 01.01.00
15	103822317	1	CONTACTOR CJX2-D32 32A 24V 3P+NO	30 A and CA3-23-10 UP TO 31.12.99
15	3804051	1	CONTACT COMP. CA3-16-10	CA3-16-10
16	3807534	2	BIPOLAR SPLICE	
17	3807542	3	COVER PLATE	
18	3807260	1	TERMINAL STRIP 9700 A/8 S35	USA
18	3807518	7	WIRE TERMINAL	
19	3805249	1	END BRACKET	
22	3810124	1	ROTARY SWITCH	
23	3000460	1	O-RING 11.0X2.0 NITRIL 70SH	
24	3812666	1	INSERT FOR FUSEHOLDER	
25	3808250	1	FUSE Ø5X20 1.25A	
26	3812674	1	SOCKET FOR FUSEHOLDER	
27	3000460	1	O-RING 11.0X2.0 NITRIL 70SH	
28	6200802	1	SCREW	
29	6200745	1	GASKET FOR FRONT PLATE	
30	3803764	1	RUBBER SEAL TET 5-7C	TET 5-7 C
30	3803772	1	CABLE GROMMET TET 7-10C	TET 7-10 C
30	3803780	1	GROMMET 10-14C	TET 10-14 C
30	3803798	1	RUBBER SEAL 14-20C	TET 14-20 C
31	6101574	1	DIAL PLATE	230/400V
32	3805876	1	SWITCHING CONTACT COMPL.	
33	1117357	1	ADJUSTING KNOB COMPL.	
34	3805868	1	CONTACT S220 - DK 0519	Y/?
36	4000287	1	HANDLE RED	
37	6100100	1	PIN	
38	4000303	1	INDICATOR RED	
39	1803451	1	SCREW M4X10 POZI DIN 965 BLACK-CHROM	

Electric parts

02V (0802VVA)

22-02-2015

Part List ID

02V52

55

Pos	Part no.	Qty	Description	
40	3000387	1	O-RING 3.1 X 1.6 SMS	
41	3000668	2	WASHER	
42	1805399	2	LOCK NUT W. NYLONRING M6 A2	
45	6200752	1	PRINT 380V-440V	400-440V
45	6200815	1	CIRCUITS BOARD 480V-575V	440-500V
45	6201737	1	CIRCUIT BOARD 200-240V	230-240V
47	1803139	2	SCREW M3X6	
48	6201848	1	CONNECTION BOX	
51	2759	12	HEXAGON NUT M4	
52	1800887	12	WASHER M4	
55	3804978	1	CAPACITOR 66 F. 400V DB Ø	50 and 66 Áf
55	3805348	1	CAPACITOR 160MICRONF. 250V DB	160 Áf
57	1119302	1	COVER F. SPARKING-PLUG REP.KIT	
60	3812542	1	IGNITION TRANSFORMER	I,B,N,E,CN,ROK,SGP,SJ,U,USA
60	3812559	1	IGNITION TRANSFORMER	A,AR,CL,DK,F,HK,IL,NL,CH,P,PE,S,SE,ET,GR
60	3812567	1	IGNITION TRANSFORMER	AUS,GB,NZ,SGP,USA,OFF-SHORE,U,M
65	1721	1	PLUG	CEE 5 POL.400V/16A
65	6180261	1	EL. CABLE H07RN-F 3G 1.5	H07RN-F 3G 1.5, 1 PHASE
15A	3821748	1	AUXILIARY SWITCH AB 100-SB10	